



Mound City NEWS

**Published & Printed in
Mound City, Missouri**
Vol. 133, No. 31
75¢
www.moundcitynews.com

Serving all of Holt County, Missouri, since 1879. Home of Squaw Creek National Wildlife Refuge & Big Lake State Park.

THURSDAY • FEBRUARY 7 • 2013

South Holt Courtwarming

South Holt High School in Oregon, MO, will celebrate its Courtwarming festivities on Friday, February 8. South Holt will be hosting Tarkio, MO, High School in basketball action beginning at 5 p.m.

Early Valentine's Day dinner at the Mound City First Christian Church

The Mound City First Christian Church is offering an opportunity to celebrate Valentine's Day early with fine dining on Sunday, February 10. A choice of barbecued brisket or chicken is being offered. Reservations can be made for 5:00, 6:00, or 7:00 p.m. by calling the church office, (660) 442-3104. Also include the number of people and the choice of entree.

A free will donation will be accepted with the proceeds going to On a Mission, a group from the church that will be traveling to the east coast to help with Hurricane Sandy Relief the end of July.

Upcoming senior nights

Basketball season is coming to an end for many area high school athletes as senior recognition nights are scheduled for Holt County schools.

On Monday, February 11, Mound City will be recognizing its senior athletes and parents at the Mound City basketball games with North Nodaway. The games will be played at the Mound City R-2 Gym with the junior varsity boys' game to start at 5 p.m.

South Holt will also be celebrating its senior recognition on Monday, February 11, at the South Holt Gym in Oregon, MO. South Holt will be hosting West Nodaway. Senior athletes and their parents will be recognized before the girls' varsity game, which should be around 5:45 p.m.

Nodaway-Holt's senior recognition is set for Friday, February 15, at Nodaway-Holt High School in Graham, MO. Nodaway-Holt will be hosting South Holt in basketball action with games beginning at 5 p.m.

Cub clinic at Mound City

The Mound City High School Cheerleaders will be featuring their Cub Clinic participants at the high school basketball games on Friday, February 8. Basketball action begins at the Mound City High School Gym with Craig/Fairfax (CFX) at 5 p.m. Cub Clinic participants will perform between and at halftimes of the games that evening.

Goose & Duck Numbers on the Refuge

As of 1/29/2013
GEESE - 50,527
DUCKS - 10,282

Details emerge in fatal shooting along I-29 near Craig, MO

Details have emerged regarding the fatal shooting of an Omaha, NE, man during a routine highway patrol stop along Interstate 29 at the 91 mile marker near Craig, MO, on Monday, January 28, at 8:16 p.m.

Missouri Highway Patrol Trooper Chris Sullivan stopped a southbound 2007 Chevrolet Tahoe for speeding. The driver of the vehicle was 50 year-old Thomas E. Schroeder of Omaha, NE.

After failing a field sobriety test, Schroeder was placed under arrest, but before Trooper Sullivan could handcuff him, Schroeder attempted to drive off. The trooper went up to the vehicle in an attempt to stop Schroeder from leaving the scene, at which time Schroeder struck the trooper multiple times with closed fists.

Trooper Sullivan then attempted to stop Schroeder with pepper spray, but the

6'6", 250 pound man attacked Trooper Schroeder, repeatedly throwing closed fist punches. Fearing severe injury or even death, Trooper Sullivan drew his weapon and fired it.

If a trooper's weapon is drawn, he/she is trained to shoot for a center of mass of the person that is the deadly threat. At this time, the Missouri State Highway Patrol Department of Public Safety indicates that Sullivan followed procedure correctly.

"It's important to realize that we have a force continuum to follow," stated Sergeant Sheldon Lyon of Troop H Missouri Highway Patrol. "The continuum includes various stages from voice commands through deadly force. When you look at what happened, the situation became very violent. The trooper reacted as trained."

Identification of Schroeder was delayed because several driver's licenses and other

forms of identification were found in Schroeder's possession. Investigators were able to make a correct identification on Tuesday evening, January 29, after making contact with Schroeder's family. Court records showed that Schroeder had a criminal history in Nebraska of theft, robbery and drugs, and had served several years in federal prison.

The trooper's dash camera, which recorded audio and video footage at the scene, is being reviewed by investigators who will then write a comprehensive report. The report will contain all the information gleaned from the incident, as well as criminal history of the victim. Once complete, the report will be sent to Holt County's prosecuting attorney, Robert Shepherd, who will rule on whether any criminal charges need to be filed in the case, or if it was a justifiable shooting.



2013 Mound City Courtwarming Royalty

The Mound City R-2 School- Crowned its 2013 Courtwarming Royalty prior to varsity basketball competition against the Rock Port Blue Jays on Friday, February 1, at the Mound City gymnasium. Pictured above, left to right, are 2013 Courtwarming King Brett Johnson and 2013 Courtwarming Queen Chelsea Killin. Brett is the son of Jayson and Ruth Johnson, and Chelsea is the daughter of Clint Killin.

Graham recipient of grant to provide water

On Friday, February 1, the Missouri Department of Economic Development (DED) announced that Nodaway County has been approved for a \$362,800 grant under the Community Development Block Grant (CDBG) program.

Due to the ongoing drought, wells in Graham, MO; Barnard, MO; and Sheridan, MO, are reaching critically low levels and the communities are facing the very real threat of not being able to provide water to their citizens in the near future. CDBG funds will be used to connect three communi-

ties to the Nodaway County Public Water Supply District #1, which is the only other viable water source. Mazingo Lake serves as the source for Nodaway County Public Water Supply District #1.

Funding for this project came from the state of Missouri's annual CDBG allocation. The CDBG program, administered by the Missouri Department of Economic Development, provides grants and loan funds to cities with populations under 50,000 and counties under 200,000 to assist in a variety of public works and economic development projects.

Have a ball with ballroom dancing

The State Theater in Mound City, MO, is offering young and old alike an opportunity to have a ball with ballroom dancing. The Ballroom Dancing Exhibition will take place on Saturday, February 23. The evening will begin with a social hour offering hors d'oeuvres and beverages from 6:00 p.m. to 7:00 p.m. The Ballroom Dancing Exhibition by Paul and Chris Stickler will begin at 7:00 p.m. Following the exhibition, attendees will be given the unique opportunity to learn ballroom dance steps.

Paul and Chris Stickler have been dancing together for 22 years. They danced for Paul Chambers for many years and have taught social dance classes for Missouri Western State University in St. Joseph, MO, and the Western Institute. The Sticklers have also choreographed and taught debutante waltzes in Kansas City, MO, for the Belles of the American Royal Ball the past 14 years and for the Jewel Ball the past 4 years.

The Sticklers' sons, Jonathan and Jackson, have been around music their entire lives and seemed to enjoy imitating and recreating it from a very young age. By the time

they were 5 and 7 years old, they had become a dynamic duo called the J-Boyz, who were performing at banquets and festivals throughout the Midwest.

Advance tickets may be purchased at all of the Mound City banks, as well as Back CBO in Oregon, MO, for \$15 per person, or \$25 per couple. This is a season ticket holder event. More information can be obtained by calling 660-442-5909 or 816-294-4016. The Ballroom Dancing Exhibition is sponsored by the State Theater Arts Council and the Missouri Arts Council.

Theater to reschedule movie day

The free movie day at the State Theater in Mound City that was planned for Presidents' Day on Monday, February 18, has been postponed because Mound City R-2 will be in session on that day. A new date has not yet been chosen by the arts council.



Anxious to welcome new clients to their new location in Oregon, MO - Are, left to right, stylist, Alisa Cox; licensed massage therapist, Leticia Gerling; and business owner, Lonna McCourt. Lonna is a stylist and a licensed massage therapist. Not pictured is esthetician, Amanda Kurtz.

Indulge Salon & Bodywork relocates

The Oregon, MO, square is welcoming a new business that has relocated there. Indulge Salon & Bodywork has moved and expanded to 101 South Washington Street in Oregon. The new site was formerly Holt County Family Medicine and is owned by the city of Oregon. Business owner, Lonna (Kurtz) McCourt of Oregon, has signed a lease with the city of Oregon.

Indulge Salon & Bodywork, which moved from 601 East Nodaway in Oregon, offers salon services, skin care, and massage therapy. The new location for the business, that was opened two years ago, will allow the salon to provide clients with a greater availability of service hours for their convenience.

Salon services are provided by Lonna McCourt and Alisa Cox of Oregon. Evening appointments are available with Lonna, while Alisa will be establishing

a calendar for daytime appointments. Cuts, styling, color services, and perms are provided, along with a product line of hair products. Alisa is joining the salon after working at several locations in St. Joseph, MO. She has been a beautician and stay-at-home mom for the past 23 years.

Massage therapy is provided by Leticia Gerling of St. Joseph. As a licensed massage therapist, Leticia specializes in deep tissue, Swedish, and pregnancy massages. Her hours will be Monday and Thursday evenings and day hours on Saturdays. Lonna McCourt, who is also a licensed massage therapist, will continue to provide massages as well.

Amanda Kurtz of Oregon provides skin care services. Amanda, a licensed esthetician, offers facials, waxing, mi-

Continued to page 3

Letter to the editor

Dear Editor,

My comments are in regard to your article last week about a proposal by Kansas City Power and Light (KCP&L) and the Omaha Public Power District (OPPD) for a potential route for a high transmission power line in Holt County, Missouri, plotted just north and west of Squaw Creek National Wildlife Refuge (NWR). The proposed route, as you reported, can be described as beginning just north of Mound City and then running west between the refuge and Craig, MO, and then crossing the Missouri River south of Craig. This particular route is of great concern, as it would have a major negative impact to an environmentally sensitive area. This route crosses directly over and along numerous privately owned properties that are managed as seasonally flooded farmed wetlands and other wetlands managed for the express purpose of attracting migratory waterfowl in large numbers for recreational hunting and bird watching. This zone is considered to be one of the premiere waterfowl hunting destinations in North America. While it is a relatively small area, it compromises a large block of high quality habitat provided by private landowners that, at times, contains over two million migrating ducks and geese as well as numerous bald eagles and an increasing number of trumpeter swans and sand hill cranes. This area serves as an extension of Squaw Creek NWR.

Waterfowl tourism attracts thousands of waterfowl hunters and bird watchers to the Mound City area. Construction of such a line in this area where millions of waterfowl roost and forage would significantly degrade a delicate resource and the value of the area for these activities. It would eliminate the reasons for the landowners to invest funds to provide this quality waterfowl habitat. In recent weeks, US Fish and Wildlife officials have discovered several dead swans in this area that were killed in collisions with small power lines. The negative impacts of this particular proposed high transmission power line route to waterfowl and other migratory birds would be immeasurable. The impacts to recreational waterfowl hunting and waterfowl tourism would result in significant negative impacts to the local economy.

KCP&L and OPPD have been soliciting public input and information about the proposed project on the website midwesttransmissionproject.com and at several area public meetings. Officials have said that they want to know about possible conflicts and issues along potential proposed routes. Many individuals and organizations have already taken this opportunity and informed them that the area between Squaw Creek NWR and the city of Craig is environmentally unique and must be protected, and that it should be eliminated from any further consideration for such a project. I would encourage everyone to comment if you have not yet done so, before the comment period ends on Monday, February 11. KCP&L and OPPD are wise to solicit such information and input during the planning stages of this project. Once they are armed with the information they asked for, surely they will use it to make good choices.

**Gary Parker,
Mound City**

Mound City Kiwanis Club news

The Mound City Kiwanis Club met at the United Methodist Church in Mound City on Wednesday, January 30, 2013, with seven members present. There was no program – a brief business meeting followed the meal. Friday evening, February 1, was the pancake feed courtwarming at the Mound City School. Tommye Quilty sent out a message to remind members. There was a discussion about the proposed power line that will be located two miles north of the refuge and crossing over a number of waterfowl hunting clubs.

FCCLA will be hosting a Daddy/Daughter Masquerade Ball

The Nodaway-Holt Family, Career and Community Leaders of America (FCCLA) have been staying very busy throughout the school year and they are not slowing down. Nodaway-Holt will be well represented by 19 of its members at Region 1 STAR Events' competition which will be held on Tuesday, February 12, at Northwest Missouri State University in Maryville, MO. On Wednesday, February 13, three members will be attending Region 1 Officers' Screening in hopes of obtaining an office at the regional level.

To help with the costs of competition, the Nodaway-Holt FCCLA will be hosting a Daddy/Daughter Masquerade Ball on Saturday, February 9, at Nodaway-Holt High School in Graham, MO. It is open to the public and to all ages. There will be a dinner, dancing, games, and giveaways. Please RSVP by contacting Heather Wilmes at 660-939-2135.

Tuesday Club holds meeting

Tuesday Club met at the home of Debbie Loucks, in Mound City, Tuesday, January 8, 2013, with 16 members answering the roll call, "The worst movie I have ever seen is. . . ."

President, Sheri Meadows, conducted a brief business meeting which included the treasurer's and secretary's reports, and received correspondence from the After Prom Committee requesting a donation.

At the conclusion of the business meeting, a social hour, including discussion about movies, followed and hostess, Debbie Loucks, served delicious refreshments. Attending were: Leisa Biermann, Linda Boultinghouse, Linda Creed, Patty Davis, Wava Duncan, Carly Edwards, Kris Gibson, Barb Heitman, Susan Laukemper, Judith Long, Debbie Loucks, Judy McIntire, Jane Meadows, Sheri Meadows, Phyllis Parker, and Brenda Ryan.

The next meeting will be held at 8 p.m. on Tuesday, February 12, 2013, at the home of Jeanne Moore in Mound City.

Remembering

by Eugene Poynter

When the 'end gate seeder' was invented, it must have been next to the invention of the wheel in importance. It sure filled in a portion of our old time agriculture equipment.

The end gate seeder was a device that fit in the end gate of the standard wagon box and was used to seed the fields by the broadcast method. It was a chain operated unit, driven from a sprocket fastened to the hub of a rear wheel on the wagon. It could be any kind of wagon as long as the bed could hold seed oats and was either pulled by horses, mules, or, in our case, a tractor.

The seeder had two hoppers. One big hopper was used to hold a couple bushels of seed oats, and a smaller hopper was secured to the back of it to hold sweet clover, alfalfa, red clover, or some other similar small seeds. Each outlet from the hoppers had a sliding gate that was adjustable for the amount of seeds it would release down on the two revolving fan type units that would throw the seeds out the back onto the field behind. The speed of those depended on how fast the wagon was pulled. It also had a lever on the outside to shut off the unit, handy for whoever was in the wagon keeping an eye on the seeder and keeping the two hoppers filled with the proper seed. Standing in some loose oats and trying to keep your balance to stay in the wagon instead of being thrown out due to the uneven ground or

a faulty tractor driver, which would have been me as a kid, could be difficult.

Probably an adult with a team of mules or horses pulling the wagon could do all the jobs himself, if he had a well-trained team. With the separate tractor driver and the one in the wagon, keeping the hoppers filled and shutting off the unit while turning around on the end, meant those two sure had to be able to get along and work together.

It was a non-scientific job of getting things adjusted just right to distribute the correct amount of seed oats (usually the nurse crop only) and the small grains. The adjustments on the two hoppers were more for reference and not exact measurements. Dad would get out and walk back to see how we were doing and maybe would adjust the units a little or tell me to either slow the tractor down or speed up. The better quality of the seed oats, the wider the area of seeding. The wind was always a deciding factor as to when we went to the field. The weight of the seed limited how far the seed could be spread out. Since we were back in the time of 2 to 4 row farming, the tractor driver would be responsible for moving over the correct amount of rows for uniform coverage. Usually, as I remember, that was 8 to 10 rows. After the field was seeded, we took our 7-8 foot tandem disk down two rows at a time and covered up the seeds. That disk had the front unit throwing the

dirt out and the back disks bringing it back in. It usually made a fairly level seed bed.

Back in those days, just after the first of March, when there was still some of the first snows in October still on the ground, a warm wind called a Chinook wind would come along, usually at night. In a week or more, we'd be in the field sowing oats, because it would dry up that fast. That was a happy release from cleaning out the barns and hauling out with the manure spreader.

When Betty and I went to farming in the hills after WWII, we tried to do everything on the contour. She and I would do the seeding, and would trade off the jobs. Betty didn't care to drive the tractor with all the short rows from the contours, so she'd be in the wagon. I know now I was lucky that she'd help at all, for I'm sure she had one too many bosses, ME. Regardless of who had what job in the end gate broadcasting department, we could hardly wait to see what it looked like when the oats began to grow. When the oats came up, you could sure see if you had put out a uniform pattern of seed. The bad thing was, so could your neighbors!

By the way, last Saturday, I visited with a gentleman farmer about the old end gate seeder. He told me he still had an International end gate seeder. I won't mention his name, because someone might want to borrow it.

Nutrition site news

Volunteers at the Nutrition Site in Mound City during the week of January 28, 2013, were: Walt and Pat Groves, Gene and Bev Miller, Herb and Mary Ann Beggs, Lela Boyd, Yogi Swymeler, Jacob Andes, Tami Paulson, Bill and Donna Golden, Scott Laukemper, Robert Gibson, Ruth Rother, Addie Trimmer, Diane White, Paul and Yvonne Markt, Susan Noland, Art Davis, and Marta and Malory Burton.

Delivering meals the week of February 4, 2013, will be: **Craig** - Monday - Walt and Pat Groves and Gene and Bev Miller. **Mound City** - Monday through Friday - Lions Club. **Oregon and Forest City** - Monday through Friday - Faith Fellowship Church.

The Mound City Nutrition Site recycles cell phones, ink cartridges, and aluminum cans for cancer (Helping Hand) in two purple cans by the front and back doors. There are also drop boxes for box tops for the school and donations to

the food pantry.

Upcoming activities at the Mound City Nutrition Site are:

February 11 - Exercises, 8:30 a.m.; Bring in your Valentine's box to be judged, you might win a trip to Hawaii, or not, but there will be prizes.

February 12 - Popcorn, lemonade and music starting at 10:30 a.m.; Abraham Lincoln Trivia at 11:45 a.m.; Share Your Talent at 12:45 p.m. (knitting, crocheting, quilting, etc.)

February 13 - Exercises, 8:30 a.m.; Board meeting, 10 a.m.; Kendallwood Hospice with blood pressure screening, 11 a.m. until 12 p.m.

February 14 - Popcorn, lemonade and music starting at 10:30 a.m.; Valentine's Party.

February 15 - Cinnamon rolls and donuts, 8:30 a.m.

February 23 - Kiwanis is having a pancake feed with proceeds going to the Nutrition Site.

If anyone can volunteer with preparing or serving cinnamon rolls and/or donuts, please call Addie Trimmer at 660-442-5889.

The upcoming menu at the site is:

Monday, February 11-

Mexican casserole, lettuce salad with tomatoes, corn, juice and rice pudding.

Tuesday, February 5 - Chili or vegetable beef soup, coleslaw, pears, crackers and cinnamon rolls.

Wednesday, February 13 - Baked chicken, mashed potatoes and gravy, peas and carrots, apple crisp and hot rolls.

Happy Valentine's Day, Thursday, February 14 - Roast beef, mashed potatoes and gravy, California blend, peaches and cookies, hot rolls and ice cream.

Friday, February 15 - BBQ rib portion on bun, oven potatoes, mixed vegetables and mandarin oranges.

ATTENTION:


OFFERING MEN'S 12-STEP DRUG & ALCOHOL RECOVERY PROGRAM


AT 304 E. 4TH ST.
MOUND CITY, MO

EVERY WEDNESDAY 7:00-8:00 P.M.

FOR INFORMATION CALL
660-442-6305 OR
660-442-6085.



Mound City NEWS 


Published and Printed in Mound City, Missouri

Established 1879
(USPS 364-920)

Published weekly on Thursdays and entered as periodical publication at the Post Office in Mound City, Missouri 64470.



POSTMASTER - Send changes of address to:
Mound City News, PO Box 175 • Mound City, MO 64470

511 State Street, PO Box 175 • Mound City, MO 64470
(660) 442-5423 • Fax (660) 442-5423
E-mail: moundcitynews@socket.net www.moundcitynews.com

Adam Johnson
Owner/Publisher

Lisa Yocum, News & Sports Editor
Jessica Lindsay, News & Circulation Manager
Pam Kent, Advertising **Joy Johnson**, Proofreading

Benjamin Flint, **Jennifer Pardue**,
Todd Puckett, **Will Johnson**, Print Shop



Member
Missouri Press
Association

SUBSCRIPTION INFORMATION
\$30 PER YEAR
Holt, Nodaway, Andrew, and Atchison Counties.
\$35 PER YEAR
Elsewhere In Missouri and All Other States.
All Subscriptions Are Due In January

Copies available each week at our office and at:
Craig Country Store, Craig; Lakeshore Grill,
Prop-In, Big Lake; Forest City Diner;
Country Corner and Price's Grocery, Oregon;
The Smokehouse, Graham; Skidmore Service,
Skidmore; Rocky's Pit Stop, Maitland;
Mound City Thriftway, Kwik Zone, George's C-Store, New
Squaw Creek Travel Plaza & I-29 Travel Plaza in Mound City.

Happy Valentine's Day!
Thursday, February 14, 2013



Beautiful custom floral bouquets, roses, balloons, chocolates, teddy bears and more!

Call and let us help you pick the perfect gift to make your Valentine say "Wow!"

Rose Petals Flowers & Gifts
601 State St., Mound City • 660-442-5916

Like Us On Facebook

February Monument Sale
Now Accepting Orders
10% off

- 10% OFF GRANITE AND BRONZE PRODUCTS
- PAYMENT TERMS AVAILABLE
- MONUMENTS SET BEFORE MEMORIAL DAY

Chamberlain Funeral Home & Monuments
1705 Ridge Drive • PO Box 56 • Mound City, MO
660-442-5300

State releases January, 2013, General Revenue Report

State Budget Director, Linda Luebbering, announced recently that 2013 fiscal year-to-date net general revenue collections increased 9.5 percent compared to 2012, from \$4.15 billion last year to \$4.54 billion this year.

Net general revenue collections for January, 2013, increased by 18.4 percent compared to those for January, 2012, from \$658.5 million to \$779.5 million.

Individual income tax collections:

- Increased 6.1 percent for the year, from \$3.04 billion last year to \$3.22 billion this year.
- Increased 8.0 percent for the month.

Agronomic schools offered

Two schools will be offered in March. Principles of Fertilizers and Soil Fertility will be offered Thursday, March 7, and Friday, March 8, at the Holt County Extension office in Oregon, MO, and Beginning Crop Scouting Course will be offered Saturday, March 16. Schools are a different format of study from many extension meetings. Pre-registration will be required to attend.

Information regarding these schools can be obtained by contacting the Holt County Extension office at 660-446-3724.

Sales and use tax collections:

- Increased 2.4 percent for the year from \$1.08 billion last year to \$1.10 billion this year.
- Increased 14.7 percent for the month.

Corporate income and corporate franchise tax collections:

- Increased 0.9 percent for the year, from \$235.8 million last year to \$237.9 million this year.
- Increased 35.6 percent for the month.
- All other collections:
- Increased 37.8 percent for the year, from \$188.0 million last year to \$259.2 million this year.
- Increased 20.8 percent for the month.

Refunds:

- Decreased 28.5 percent for the year, from \$389.1 million last year to \$278.1 million this year.
- Decreased 54.0 percent for the month.

Graves Chapple report available

The annual Graves Chapple Research Center report is now available. The report contains research and demonstration results from hundreds of crop plots established at the field site located north of Craig, MO, along Interstate 29. The report provides results of tests that are guided by suggestions made by area growers.

For a copy of the report, please contact Jim Crawford, Superintendent at the Graves Chapple Research Center, at 660-744-6231, or Wayne Flanary, Regional Agronomist, at 660-446-3724.

Pay by March 1 and save on golf course membership

The Mound City Golf Course is offering patrons a savings on memberships if paid by Friday, March 1, 2013. Families can save \$35 on a membership while individuals can save \$25.

Family and single membership prices as well as student membership, women's league and men's league prices and cart shed rental fees may be found in an ad elsewhere in this edition of the *Mound City News*.



A spa like atmosphere - Greets clients as they enter Indulge Salon & Bodywork in Oregon, MO.

Indulge Salon & Bodywork relocates

From front page

crodermabrasion, chemical peels, body treatments, and spray tanning. Amanda has product lines that provide specialized care and treatment for all skin types. Her services and products are prescribed for each individual based on their unique needs.

Indulge Salon & Bodywork provides Holt County with a spa like atmosphere and the services found in a full service spa/salon. Gift certificates are available for services provided, along with retail skin and hair products. Appointments may be made by calling the salon at 660-446-3003 or Lonna at 816-244-6981.

Snow causes area schools to make up day in calendar

When snow and dire winter weather caused the cancellation of the four area schools on Wednesday, January 30, it also caused action to be taken regarding making up those days for students and teachers at Mound City R-2, Craig R-3, South Holt R-1, and Nodaway-Holt R-VII. At this time, barring no other snow days, the snow days will be handled as stated below:

For Mound City, the past two years' school calendars have had no inclement days built in. The 170 student day calendar (180 day teacher) does not build in snow days, which was no problem during the 2011-2012 'no snow' school year. This year, however, it was decided to make the missed day up on Monday, February 18, Presidents' Day.

The snow day caused the Craig R-3 School in Craig, MO, to add the day on at the end of the school calendar. Instead of dismissing on Wednesday, May 15, school will also be in session on Thursday, May 16.

For South Holt students and faculty in Oregon, MO, the school calendar was extended. They will now finish their school year on Tuesday, May 21.

Students and faculty at the Nodaway-Holt schools in Maitland and Graham, MO, will extend the school year and finish with the last day on Tuesday, May 21.

News from Tiffany Heights

On Monday, January 28, the residents at Tiffany Heights in Mound City had to put their thinking caps on early as they played jingo. This month they played birthday bingo. They thought this would start the year off right. All questions and answers dealt with that wonderful day, their birthday. Winners of the games were Lois Woods, Inez VanOrman, Pat Barnes, Dorothy Egbert, and Doris Taylor.

The snow came and left, but the residents were still excited about it. They played a snow game on Tuesday morning that consisted of a fishing type game to see who could gather the most snow and who could make the best snowman. Winners of these games were Carol Ball, Dolores Hawkins, Chuck Milby, and Mary Lou Nauman. During the afternoon, the residents played Name Game. This month, the residents chose the words blueberry pancakes as the 28th of January is National Blueberry Pancake Day. They were able to make 182 different words using the letters, as they appear, in these words.

Ruth Swymeler received her four mile certificate and Dorothy Gilland achieved two miles in the walking group Wednesday. During the afternoon on Wednesday, residents had movie and popcorn day. The movie was "Last of the Mohicans". This was an interesting movie and not the western they anticipated. Where is John Wayne when you need him? They did enjoy



Tiffany Heights residents and staff- Wore red on Friday, February 1, to show support for the women who have been affected by cardiovascular disease.

the popcorn.

Dee Ann Heck played piano before lunch on Thursday. Bingo volunteers were Shirley Jackson, Jean McCall, Barbara Hanlon, Lucille Stull, Judy Scarbrough and Mary Lee Privett. The big bingo winner was Inez VanOrman.

Barbara Hanlon assisted with glamour nails on Friday morning. Pastor Grant and Barbara Hanlon provided Bible Study also during the morning on Friday.

The month of February is heart month and to start it out right, the residents and staff participated in a Wear Red Day. On this day people were encouraged to wear red to show support for the women who have been affected by cardiovascular disease. Forty-two people gathered to take their picture and wear red for this cause and to help participate in the Community Hospital-Fairfax, MO, challenge.

In anticipation of Groundhog Day, the residents enjoyed a few fun games during the afternoon on Friday. They played pig pop. Everyone got a chance to see if they could make a (plastic) pig pop a ball into a bucket. With three tries, the winners of this game were Lois Woods, Dorothy Gilland, and Dorothy Egbert. They tried to debunk the saying, "if pigs could fly", and tried to see if their pig could fly. They did! The pig that flew the longest distance belonged to Chuck



Tiffany Heights resident, Betty Elder- Preparing her pig to fly on Friday, February 1. She was one of the winners whose pig flew the longest distance.

Milby. The final game dealt with how well they knew pigs. Residents were asked a variety of questions and those who could answer knew their pigs. Winners were Doris Taylor, Betty Elder, Lucyle Benne, and Inez VanOrman. The residents enjoyed little piggies (smokies) after the games, but did not make a pig of themselves.

Games of choice were encouraged during the afternoon on Saturday. Larry Brickey and the Mound City Baptist Church family provided Sunday morning services. Afternoon worship was conducted by the Community of Christ Church.

Your Full-Service Memorialist
Since 1935

- Monuments
- Markers
- Mausoleums
- Plaques
- Lettering
- Cleaning
- Custom Designing

Van Vickle Monuments

1717 Frederick
St. Joseph
Toll Free
1-877-232-5882

MOUND CITY GOLF COURSE
Save \$35 on a family membership and \$25 on a single membership if paid by March 1, 2013.

Family Membership - \$440 before March 1, and \$475 after.
Single Membership - \$350 before March 1, and \$375 after.
Student Membership - \$125 **Cart Shed Rent** - \$160
Women's League - \$58.00 **Men's League** - \$65.00

Remit to: Mound City Golf Course,
PO Box 123, Mound City, MO 64470

Pettijohn & Crawford goes the extra mile...

For you.

Maybe you've never considered our funeral home because of your family tradition using someone else. We'd like you to know that our continuous history of superior service, attractive facility and affordable prices make us the standard in the area. We go the extra mile in all we do to help you get through a most difficult time in your life.

Judith Crawford Long
Judith Crawford Long
C (816) 294-0231 • H (660) 442-3617

Pettijohn & Crawford
Family Funeral Service
1405 Nebraska, Mound City, MO 64470

Area Church Information

CRAIG

Craig Presbyterian Church

Worship Service, 9:15 a.m.

Cliff McNair, Minister

Sharp's Grove United Methodist Church

4.5 mi. north of Craig on Hwy. 59 • *Rev. Jeremy Blevins*
Worship Service, 8:45 a.m.

Craig Community Church of the Nazarene

105 S. Ensworth Street • *Keith Knaak, Pastor*
Sunday School, 10 a.m., Worship Service, 11 a.m.
Wed. Night Bible Study, 5:30 p.m., Wed. Kingdom Kids, 3:30-5:00 p.m.,
Wed. Night Youth Group, 6:30-8:00 p.m.

Church of God

Sunday School, 10:00 a.m., Worship, 11:00 a.m.

FILLMORE

The Lighthouse

Exit 65 on I-29 • *Pastors Tim and Faith Uzzle*
Sunday Worship: 10 a.m., Thurs. Bible Study: 7 p.m.
www.fillmorelighthousechurch.org

GRAHAM

Graham Union Church

Sunday School, 9:30 a.m., Morning Worship, 10:30 a.m.
Evening Service, 6:30 p.m., Wednesday night, 7 p.m.

United Methodist Church

Connie Ury, Pastor
Sunday School, 9 a.m., Worship, 10:15 a.m.

MAITLAND

First Christian Church

4th and Ash • *Bill Gazaway, Pastor*
Sunday School, 9:15 a.m., Worship Service, 10 a.m.
Sunday Night Worship, 7 p.m., Wed., Youth Rallies, 7 p.m.

United Methodist Church

217 S. Maple Avenue • *Connie Ury, Pastor*
Worship Service, 9 a.m.

MOUND CITY

Community of Christ

1410 Nebraska Street • *Theresa Mackey, Pastor* 660-446-2048
Sunday School, 10 a.m., Worship Service, 11 a.m.

Christian Fellowship

18080 Hwy. 59 • *Jim Brown, Minister*
Sunday School, 9:30 a.m., Worship, 10:30 a.m.
Senior High Youth, 7:00 p.m. • www.christian-fellowship.net

Holy Trinity Lutheran Church

1413 Nebraska St. • *Rev. Brian Lemcke*
Worship Service, 10:30 a.m.
Bible Class or Sunday School, 9:15 a.m.
Worship Every Third Sunday, 7:00 p.m.

First Christian Church

402 E. 5th Street • *Paul Grant, Pastor*
Sunday School, 9:30 a.m., Worship, 10:30 a.m.
Wednesdays- Bible Study, 12 p.m.; Worship 6 p.m.
www.firstchristianmoundcity.org

Mound City Baptist Church

1308 Savannah Street • *Pastor Nathan Lowe*
Sunday School, 10:15 a.m., Worship Service, 11:15 a.m.
Tuesday Bible Study, Larry Brickey, 6:30 p.m.;
Acteens (K-12 Grades), 4:00 p.m. • 660-853-2089
Youth Group, 5:00 p.m. - 6:30 p.m.

Mound City United Methodist Church

312 E. 7th St. • *Pastor Jeremy Blevins*
Sunday School, 9 a.m., Sunday Service, 10 a.m.

New Liberty and Big Lake Baptist Churches

County Road 140 • *Richard Lionberger, Pastor*
Sunday School, 9:45 a.m., Worship, 10:30 a.m.
Churches have now combined.

New Life Apostolic Assembly

U.P.C.I. - 307 E. 6th, Mound City • *Pastor Scott Jordan*
Worship Service, 11 a.m.
Life Night Bible Study & Revolution Youth Group
Thursdays, 6:30 p.m.
www.newlifeapostolicassembly.org - 660-442-3441

OREGON

St. Patrick's Catholic Church

303 Grand, Forest City • *Father Peter Ullrich, OSB*
Pastor and Parish Administrator

Oregon Church of the Nazarene

207 W. George • *Keith Knaak, Pastor*
Sunday School, 8 a.m., Worship Service, 9 a.m.

New Point Christian Church

24135 Stone Hill Rd. • *Brian Buck, Minister*
Sunday School, 9:30 a.m., Worship, 10:30 a.m.
Fellowship Dinner, 4th Sunday of month following church

REGIONAL

River of Hope Fellowship

Presently meeting at: 304 East 4th St., Mound City
442-0197 or 442-6305 • *Pastor David Showalter*
Sunday School, 9:15 a.m., Worship, 10:30 a.m.

SKIDMORE

St. Oswald's-in-the-Fields Episcopal Church

30996 X Avenue, Skidmore, MO
2nd Sundays - 11 a.m., Morning Prayer service by Lay Reader
4th Sundays - 11 a.m., Eucharist Service

Holt County Cancer Fund helping Holt County residents

The Holt County Cancer Fund (HCCF), Inc., has been in existence for 20 months. In that time, 39 residents have allowed the fund to provide monetary assistance while they were undergoing cancer treatment. That averages out to be about two applicants a month. The fund began by offering \$200, which helped 25 people. The amount was increased to \$300 in March, 2011.

The HCCF officers and committee members are very appreciative of every dollar or can that is contributed. Memorials and private donations have been a great help in supporting the fund. The Cans for Cancer project has been very successful and has added \$7,683 to the fund.

At their January meeting, committee members and officers planned the calendar for the new year. Four fund-raising events will be held: a breakfast March 9 at the TJ Hall Building in Oregon, MO; a yard sale in conjunction with Oregon's city-wide garage sale event June 8; "Help Oregon go Pink for the Cause" through the month of October; and the annual Helping Hand Hoedown Sunday, October 6, at Paradise Park in Oregon.

In an ongoing attempt to

include the entire county in HCCF activities, plans are being made to enter a float in each of the county's events: the 4th of July celebration in Mound City; Holt County Autumn Festival in September in Oregon; and the Craig, MO, Fest in September. Plans are also being made to enter a float in Graham's Street Fair parade as well. Although Graham, MO, is in Nodaway County, it neighbors Holt County's city of Maitland; and because of the school system, there are very close ties.

The purpose of HCCF is to provide monetary assistance to Holt County residents for transportation costs incurred during cancer treatment outside of Holt County. If anyone in the county is dealing with cancer and its treatment, please contact any officer or committee member for an application for funds: Phyllis Dannar, Mary Ann Showalter, Connie Gordon, Carol Brandon, Alita Meyer, Nina George, Brad Derr, B. J. Ripley, Ellen Kneale, Tammy Yocum, Shirley Fogg, Shelly Portman, Charmaine Flint, Dotie Biermann, or Rita Carroll. Also, if anyone would like to help in some way at any event, give these same people a call.



A large group of patrons- Attended the supper that was hosted by the Craig CTA in the Craig R-3 cafeteria on Friday, February 1.



Craig faculty and staff, above- Were graciously serving up soups and pies in the Craig cafeteria prior to senior night on Friday, February 1. Pictured above are, left to right, Carolyn Pyeatt, Robert Warren, Brian Wiedmer, Pam Cooper and Brittany Schlapia.

Good food draws good crowd

The Craig R-3 Community Teachers' Association (CTA) hosted a soup and pie supper on Friday, February 1, prior to varsity basketball action against the Nodaway-Holt Trojans. In addition, the evening events honored the Craig and Fairfax senior athletes and their parents, and showcased elementary cheerleaders.

Soup and chili, along with pies that were made by Dotie Biermann, were served to a large group of people who participated in the free will donation event. The event was deemed 'very successful', as it drew a large crowd.

The annual event is used by the teachers' organization to help fund its annual scholarship. The organization awards a scholarship to one Craig graduating senior in the spring of each year in the amount of \$250.

Kander awards grant to Mound City Public Library to advance Missouri libraries

Secretary of State Jason Kander recently announced the Mound City Public Library received a Summer Library Program Grant in the amount of \$6,286.

The grant will be used to provide a summer reading program that promotes summer-long reading by people of all ages. Outreach efforts target city residents and beyond. The children/preteen facilitator will lead two age-specific, 45-minute weekly events for children and a one hour event each week for teens. There will also be four intergenerational events for adults and older teens. Themes will be "Dig into Reading" for children, "Beneath the Surface" for teens and "Groundbreaking Reads" for adults. Additional special presentations to augment the themes will be provided.

"We're lucky Missouri has such a rich network of local public libraries throughout the state," Kander said.

"Strong local libraries provide Missourians access to new resources and information right in their own communities. With this federal grant funding, Mound City Public Library will be able to provide Missourians with even better services and programs."

The secretary of state's summer library program grants are funded by the Library Services and Technology Act through the U.S. Institute of Museum and Library Services, which is the primary source of federal support for the nation's 122,000 libraries and 17,500 museums. The institute's mission is to create strong libraries and museums that connect people to information and ideas.

In the 2013 Fiscal Year, the Missouri State Library has approved a total of 47 grant applications, distributing \$353,791 in federal awards to libraries throughout Missouri.



Flipping pancakes for the future

The Mound City Kiwanis- Sponsored a Pancake Feed on Friday, February 1, at the Mound City cafeteria prior to the Panthers' conference basketball games with Rock Port, MO. Pictured above, Kiwanis member, David King, pours out pancakes for the free will donation feed that served pancakes, sausage and eggs to approximately 70 people. The event grossed just under \$500. The net amount raised will help underwrite the two \$1,000 scholarships to be given to Mound City seniors in May. The Kiwanis will offer the same pancake, egg and sausage feed on Saturday, February 23, at the Mound City Nutrition Site. Profits from the feed will go back to the site. The future of students and the elderly seem to benefit when the Kiwanis flip pancakes, and the community comes to enjoy them.

Early Valentine's Day Celebration

Fine Dining on Sunday, February 10

First Christian Church
402 E. 5th Street - Mound City
(In the Fellowship Hall)

Barbecued Brisket or Chicken For A Free Will Donation!

*Reservations may be made for 5 p.m., 6 p.m., or 7 p.m.
by calling the church office, 660-442-3104.
Include the number of people and the choice of entree.*

A free will donation will be accepted with the proceeds going to On a Mission, a group from the church that will be traveling to the east coast to help with Hurricane Sandy Relief the end of July.

No Health Insurance

No Prescription Coverage

High Deductible - Donut Hole

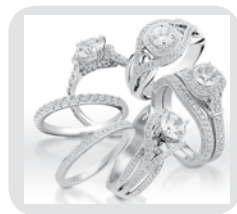
Holt County Farm Bureau

Can Help at Local Pharmacy
Call for Details at 660-446-2310

Creviston & Son Jewelry

With over a century of trust

"Allow us to help make your



Valentine's
Day
special."

Special Financing Available -
Up to 2 years free with
approved credit

1002 SOUTH MAIN • MARYVILLE, MO 64468
660-582-5571



Millers announce birth of boy

Isaiah and Kylie Miller, Mound City, MO, are pleased to announce the birth of their son. Cormac Daniel Miller, who was born at 8:57 a.m. on Wednesday, January 9, 2013, at Heartland Regional Medical Center in St. Joseph, MO. He weighed nine pounds, nine ounces, and was 20 1/2 inches long.

Maternal grandparents are Dan and Gretchen Staples, Mound City. Paternal grandparents are William and Jeanie Miller, Princeton, MO. Maternal great-grandparents are Clyde "Sonny" and Marcia Kay Boyd, Mound City, and Ed and Shirley Staples, Mound City. Paternal great-grandparents are Orville and Thelma Starke, Mercer, MO.

Workshop to be held on sharing the Gospel

The second workshop of the year will be held at the Christian Fellowship Church in Mound City at 4:00 p.m. on Sunday, February 10. The theme of the workshop will be "How to Share the Gospel".

The workshop will consist of two different presentations. One of the presentations is titled, "How to Share the Gospel in 3 Minutes". The presentation will be given by Jon Schoonover. The second presentation will be given by Pastor Jim Brown entitled, "How to Share the Gospel Without Memorizing the Whole Bible".

The workshop is open to the public and there is no charge for the event. Christian Fellowship Church is located at the north edge of Mound City on Highway 59.

State Theater to host talent show

The State Theater Arts Council has started planning for the 2013 Community Talent Show that will be themed, "Musical Numbers". The show has been scheduled for Saturday, April 13, at the State Theater in Mound City.

Following the theme of "Musical Numbers", songs that have a 'number' in the title will be the feature of the evening performances. Songs like "Sixteen Tons", "9 to 5", or "Baby One More Time" are just a few of the many 'numerical' pieces that may be heard that evening.

Talent show co-directors,

Susan Miller and Corey (Bledsoe) Olauson, are looking for performers for the event that is always chockfull of wonderfully talented local performers. Anyone who can sing, dance, play an instrument, or spin plates on a long stick is welcome to come and showcase their talent.

So, whether one is "Five Foot Two, Eyes of Blue", or "16 Going on 17", "You're the One That I Want", or it should be said, 'the one that they want'. Call Susan Miller at Laukemper Motors (660-442-5438) or 660-442-3269, to get signed up.



Wayne Flanary, Regional Agronomist, standing- Is providing information on fertilizer and herbicide carryover and adjusting fertilizer rates to the farmers who attended the Holt County Ag Update Tuesday, January 29, at the TJ Hall Building in Oregon, MO.

Holt County ag update

The Holt County Ag Update was held Tuesday, January 29, at the TJ Hall Building in Oregon, MO. The meeting began at 10 a.m. with presentations that addressed drought topics for row crop growers and cattle producers to about 15 area farmers.

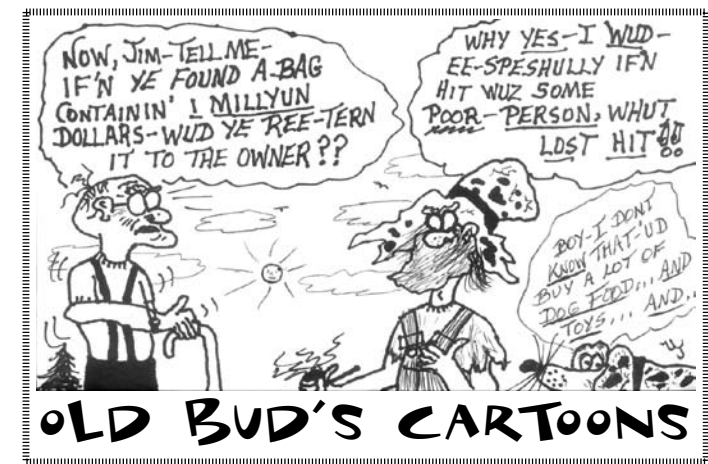
Wayne Flanary, Regional Agronomist, said that pastures and hay fields are struggling through the drought with no soil moisture. Wayne stated, "Use all appropriate tools to protect yield from a specific threat. Some of the traits/chemicals that may indirectly protect yield from drought include: genetics for yield stability; biotech traits such as insect resistance; chemicals that protect root, stem and leaf function; and weed control reduces competition." Wayne discussed information on fertilizer and herbicide carryover, adjusting fertilizer rates and handling a variety of drought related questions that growers had asked.

Tom Fowler, Horticulture Specialist, addressed that no one knows what 2013 will bring. Tom stated, "Pat Guinan, MO State Climatologist, said it is impossible to say whether we're slipping into an extended multi-year

dry period, but would be surprised if the trend of unprecedented wetness we've witnessed over the past few decades continues." As of January 8, 2013, Missouri is in a severe drought and the drought will either stay persistent or intensify. Tom discussed how to help plants and trees around the homestead to survive.

Bob Kelly, Ag Business Specialist, addressed information about crop rental agreements, cash rent, and how to handle farm business during the drought. Land prices and cash rent prices are higher in northwest Missouri. Bob stated, "U.S. average corn yield has not met 160 bushels in the last three years. U.S. average soybean yield is increasing by 0.45 bushels per year."

In the afternoon, presentations were made by Amie Schleicher, Livestock Specialist, and Jim Crawford, Ag Engineer. Amie Schleicher presented strategies and ideas to manage the beef herd through the drought. Jim Crawford spoke about the options for storing corn with aflatoxin, effect of tillage on corn yields, livestock watering, and temporary storage of silage.



This Week's History

From the *Mound City News* archives

50 Years Ago - 1963

• A special meeting of the Mound City Chamber of Commerce was held to investigate the feasibility of a new area nursing home. Approximately 39 persons were present. Enough interest was generated for the nursing home proposition to justify a more complete study. The trend toward modern nursing homes is widespread all over the nation. New institutions have been established as close as Falls City, NE, and Shenandoah, IA.

• Jimmy Thompson and Bruce McCormack, accompanied by their fathers, Harold Thompson and Carson McCormack, and Jimmy's grandfather, Earl Cottier, were guests of the Kansas City Athletic baseball team at a party held in the clubhouse.

• The French class of the Craig R-3 School entertained the Bellevue French class with a supper and party at the home of Mary McQueen. Miss Kathy Elder was the teacher at Craig. Students from Bellevue were under the direction of Mrs. Charles Gillis.

• Dick's Rexall Drugs advertised Valentine specials. Special Valentine jewelry, a fine Valentine gift, was advertised for \$1.00. Heart shaped boxes of beautifully decorated Pangburn's chocolates were available from 69¢ up. Special cards were 26 for 29¢, 36 for 49¢, and 50 for 59¢.

25 Years Ago - 1988

• Sweetheart candidates for the annual Sweetheart Dance for Mound City FFA and FHA were Kevin Blazer, Jason White, Jason Young, Angie Pendleton, Jamie Hodge, and Kris Duncan.

• University Extension and the University of Missouri-College of Agriculture cooperated to set up a research and demonstration farm for area farmers. The farm is a 23 acre leased site located along Interstate 29 between the 101 and 102 mile markers.

• Bill View, superintendent of Holt County R-II School, and Don Neidt, superintendent of Nodaway-Holt R-VII, were among 23 area educators who accepted an invitation to serve on the Northwest Missouri State University Education Advisory Council.

• The second annual Federated Women's Club volleyball tournament was won by the Kami Kazi Kids team. Members of the team were Kris Riebesell, Debbie Loucks, Robin Elms, Cheri Patterson, Pam Scarbrough, Terry Vest, Steve Loucks, Marc Scarbrough, Chuck Nance, and Bill Patterson. The Scheib team from Oregon won second place, and the Hodge Podge team won third place.

10 Years Ago - 2003

• Hardee's, the cornerstone of the I-29 entrance to Mound City for 13 years, closed for good. A new McDonald's restaurant was expected to open in the spring after extensive remodeling of the building.

• Holt County finished 2002 with a general fund surplus of \$304,301 and commissioners adopted a 2003 budget projecting a 3 percent increase in spending.

• Contracts were signed and construction was expected to start in the month to install about 1.17 million linear feet of pipe in Holt County Rural Water Supply District No. 1 at a cost of about \$4.5 million.

• Craig FFA President Nehemiah Voltmer set fire to a bank note held by School Board President Dennis Showalter during an appreciation dinner for donors at the Craig Legion Building. FFA Supervisor Jim Ball said the FFA bought 10 acres behind the school in 1997 for use as an FFA farm and paid off the note in October.

What do you remember?

The Holt County Historical Society is looking for answers to these questions that have been submitted by researchers.



CROSEN SCHOOL

An undated photo, given by the late Mrs. Orien Patterson (Esther Childers), has a note on the back, "Crosen School where Bryan (Childers, her brother) and I attended school". Any idea who is on the horse?

Notes from a society program in the 1980s share that Holt County school districts were formed in 1874 and it was believed the school was nicknamed Monkey Wrench as it "threw a wrench into things". Were they the same schools, just different names? The Childers/Patterson home was east of Mound City on Highway 113. Crosen was still standing in 1981.

Jerry Huntsman, Joe Loucks, Laverne Hodgins, Gerald Patterson, Bobbie Alloway, Dorothy Kline, Marion Heckman, Patty Hornecker, Billie Alloway, A. L. Webster, Bonnie Woods, Beulah Mae Heckman, Barbara Lea, Marylee Hodgins, Jaunita Woods, Lloyd Heckman, and Eunice Hodgins, students; Geneva Woods, Joanne Heckman, and Colene Hornecker, visitors; and teacher, Mrs. D.L. Hooper, are in a photo of students attending Crosen in a *Mound City News Independent* clipping, April 15, 1937.



MONKEY WRENCH SCHOOL

A group of children are lined up in front of Monkey Wrench School, in this old undated photo given to the society by the late Mrs. Orien (Esther Childers) Patterson. A handwritten note on the back says "Monkey Wrench used to be directly across from the Gerald Patterson home and was torn down". Can anyone identify any of these children?

If anyone has any information about any of these items please call 660-442-5949.

"Heritage of the past to the present
generation and to preserve for the future"
612 State Street in Mound City
CLOSED FOR WINTER!

The Holt County Historical Society

612 STATE STREET • PO BOX 55 • MOUND CITY, MO 64470

Also, answers may be e-mailed to the society at holtcountyhs@yahoo.com

Archery deer and turkey harvests up from last year

Bowhunters posted increases in both deer and turkey harvests during Missouri's 2012-2013 archery deer and turkey hunting season, topping the previous year's figures for the second year in a row.

The Missouri Department of Conservation (MDC) reports that hunters checked 53,997 deer during the four-month archery season. That is a 2.5 percent increase from the previous year, which was a record. Archers checked 3,217 turkeys, a 10 percent increase from the previous year.

Top archery deer harvest counties were Jefferson with 1,211 deer checked, St. Louis with 1,098, and Camden with 1,062. Top archery turkey harvest counties were Jefferson with 95 turkeys checked, Laclede with 79, and Greene with 76.

Adding the archery harvest to the number of deer taken during the six portions of firearms deer season brings Missouri's 2012-2013 deer harvest to 311,304, up 6.8 percent from the previ-

ous year. The total 2012-2013 turkey harvest, including the youth and regular spring seasons, the fall firearms season, and the archery season, is 56,511.

Permit sales also increased. MDC issued 202,421 archery deer and turkey hunting permits for the 2012-2013 season, 4.9 percent more than the previous year.

MDC Resource Scientist Jason Summers says the continued growth of bowhunting's popularity is partly responsible for the strong archery harvest, but weather also played an important role.

"With more people taking up bowhunting each year, one would expect to see a corresponding growth in the number of deer taken," says Summers. "This year hunters also got a boost from weather events that reduced the availability of acorns. Deer rely heavily on acorns

for fall food, and when that food item is scarce they have to move around more to meet their nutritional needs. That makes them more visible to hunters."

According to Summers, acorn availability is a greater factor in determining hunter success in the southern half of the state, where forest land dominates the landscape. He was not surprised to learn that the 2012-2013 deer harvest increased by approximately 22 percent in the Ozark and Southeast regions. He says deer numbers in southern Missouri have grown steadily over the past decade. Also, acorns were abundant in the previous two hunting seasons, keeping the deer harvest fairly modest. This combination was bound to produce a substantial deer harvest.

In contrast, deer numbers have been declining slowly in northern Missouri, leading to a decrease of approximately 6 percent in the Kansas City, Northeast, and Northwest regions. Reduced deer numbers in many parts of north Missouri is a result of increased harvest pressure on does that has resulted from liberalization of antlerless harvest opportunities and, in the Kansas City Region, a reduction in buck harvest as a result of the antler-point restriction.

Hunters in the Central and Southwest regions checked approximately 12 percent more deer, and St. Louis Region hunters checked approximately 18 percent more deer than they did in 2011-2012. These trends reflect slowly increasing deer numbers on average in these areas.

"Deer numbers vary from county to county in those regions," says Summers. "The causes of those variations include varying levels of harvest pressure on does, an outbreak of hemorrhagic disease in 2007 and, in southwest Missouri, reduced availability of antlerless permits."

Before the 2012-2013 hunting season, Summers predicted that the statewide deer harvest totals would not be affected significantly by the increased incidence of hemorrhagic disease that accompanied last year's drought. That turned out to be correct.

"We know that to varying degrees, hemorrhagic mortality affected deer populations across much of Missouri," says Summers, "but it

is still too early to tell if the decrease in harvest in some areas is the direct result of disease or a combination of recent trends of declining deer numbers as a result of a deliberate effort to reduce deer numbers in much of northern Missouri by harvesting more does. In many parts of central, northern, and western Missouri, it is no longer necessary to continue high doe harvest to reduce or stabilize deer numbers."

Summers says MDC will consider reducing the availability of antlerless-deer permits where deer numbers seem to be near or below target levels. However, he notes that hunters and landowners also must take an active role in decisions about how many does to shoot.

"Restricting doe harvest can help when deer numbers are down in big areas," says Summers, "but it takes a valuable tool away from Missourians who want to manage deer populations locally. We have reached a point in Missouri's history where hunters and landowners must begin to work together to make localized harvest decisions based on local deer populations. However, in some areas, regulation changes may be necessary to curb undesirable declines in deer numbers."

MDC Resource Scientist Jason Isabelle notes that the 2012-2013 archery turkey harvest was up more than 20 percent from the previous five-year average and was second only to the 2009-2010 harvest of 3,298.

"The increase in the archery turkey harvest is largely a reflection of the improved hatches we've had the past couple years," says Isabelle, "in addition to the increase in the number of archery hunters."

Isabelle says regional harvest totals were 542 in the southwest, 511 in central Missouri, 425 in the southeast, 418 in the Ozarks, 383 in the St. Louis area, 319 in the northwest, 318 in the northeast, and 301 in the Kansas City area.

MDC recorded 10 firearms-related deer hunting incidents during the 2012-2013 hunting season. Three were fatal.

Scarce acorns helped deer hunters, while Missouri's turkey flock continues to rebound from several years of poor nesting success



Brailey Poppa, left, and Juli Miles, right- Proudly display the 100 objects they brought to their Mound City kindergarten classroom in celebration of the 100th Day of School on Friday, February 1. The two girls were preparing to measure the mass of the 100 objects.



This 3-dimensional marshmallow and toothpick structure- Was intricately formed using 100 marshmallows and toothpicks by these first grade students during the celebration of the 100th Day of School on Friday, February 1. Structure makers, left to right, included Gage Knapp, Addasin Gardner, Jazmine Talbot and Cole Gillenwater.

100th Day of School Celebration

Mound City kindergarten and 1st grade classes, under the leadership of teachers, Sarah Osburn and Laura Forehand, celebrated the 100th Day of School on Friday, February 1, with a day full of activities.

Each classroom had an entire day full of events planned around the 100th day of school. Students colored and cut out 100 day glasses, counted and sorted objects, constructed 3-D structures from marshmallows and toothpicks, measured the mass of 100 objects, measured the length of 100 objects, sorted 100 objects by 10's, used 100 blocks for building, and a host of other "100" themed

activities that crossed the spectrum of instructional curriculum.

It was a fun and engaging day for the nearly 40 students who participated.



Mound City 1st grader, Mason Miller- Wears his necklace of 100 Fruit Loops that he made in celebration of the 100th Day of School.

Dental Health Month
Both dogs and cats need regular dental cleaning and care.

\$10 Off Dental Cleaning - February Only

Rafter Cross Veterinary Services
CALL 660-442-3101 FOR APPOINTMENT.
Mound City, MO

St. Francis Eye Clinic
Sudarsan Chavala, M.D.

Eye exam for glasses & contacts
Cataract and implant surgery • Laser Surgery
Optical stores attached

Maryville Office
2024 S. Main
Maryville, MO
(660) 562-2566

Toll Free
1-800-326-1399

Bethany Office
1303 N. 25th
Bethany, MO
(660) 425-2317

Welcomes All Eye Care Plans • Accepts Medicaid • Medicare Participating Physician

LAUKEMPER MOTORS
Beats the Competition...
AGAIN

2012 IMPALA - LOW MILES, 5 YEAR/100,000 MILE WARRANTY, POWER SEAT, CD PLAYER, SPORT WHEELS, REMOTE TRUNK, KEYLESS ENTRY & MORE.....\$14,969
3 In Stock

PROGRAM VEHICLES

2012 Colorado, Crew Cab, 4x4, Low Miles.....	\$23,995
2012 Captiva LS, 4 Cyl., Sport Utility.....	\$19,995
2012 Traverse, AWD, Leather, 24,000 Miles, BEST BUY.....	\$30,995
2012 Equinox, FWD, Sun Roof.....	\$25,995
2011 Charger, Pentastar, V-6.....	\$19,995
2012 Challenger SXT, V-6, Black Beauty.....	\$23,995
2012 Cruze LT, Turbo, 38 MPG, Sun Roof, Leather.....	\$17,995
2011 Impala LTZ, V-6, Leather.....	\$16,995
2010 HHR, Black, 4 Cyl., Low Miles.....	\$12,995
2010 Cobalt Coupe.....	\$12,995
2012 Cruze Turbo, Cloth Interior.....	\$15,995
2011 Chrysler 200 Touring, 4 Door, V-6, 31 MPG.....	\$14,995
2012 Chrysler 200, 4 Door, Heated Seats, Low Miles.....	

CLEARANCE ON NEW MODELS

2011 Traverse, AWD, Leather, Sun Roof.....	\$37,995
2012 Ram 3500, Crew Cab, Diesel.....	
2012 Impala, Loaded Model.....	\$24,995 Delivered
2012 Silverado, Crew Cab, 4x4.....	

Special - \$1,000 Cash Bonus on 2013 Dodge Darts, 40 mpg!

Over 100 Pre-Owned In Stock. Check them out at

www.laukempermotors.com

Laukemper
2 Locations in Mound City

CHRYSLER • DODGE • JEEP • RAM
I-29 & Hwy. 59 - Mound City, MO
660-442-5438
800-490-8035

CHEVROLET
3rd & Nebraska - Mound City, MO
660-442-9942
800-381-9942

Mound City License Bureau
302 Nebraska St. • Mound City, MO • 660-442-5531

Athletic Or Casual Diabetic Shoes
We offer Apex OR Dr. Comfort athletic or casual style shoes. The qualified diabetic patient is allowed one pair of diabetic shoes and three pairs of orthotic insoles per calendar year.

Diabetic Supplies

- Contour Strips
- Breeze 2
- One Touch
-
- Freestyle
- Accu-chek

Let us fit you with your next pair of shoes at Rogers Pharmacy Home Medical Equipment.

Rogers Pharmacy
Home Medical Equipment
Tarkio • Mound City • St. Joseph
www.rogersrx.com
607 State Street • Mound City, MO
660-442-3355 • Toll Free 800-962-0096



The icy road conditions - On Thursday morning, January 31, caused a rollover accident on Missouri 111 five miles south of Craig, MO. There were three occupants in the vehicle with only minor injuries reported.

Icy road causes rollover accident

The icy road conditions on Thursday morning, January 31, caused a rollover accident on Missouri 111 five miles south of Craig, MO. At approximately 10:35 a.m., a 1998 Isuzu Rodeo, driven by Raymond Gladden, age 69, of Craig, was northbound on Missouri 111. Gladden lost control of the vehicle on the ice covered roadway. The vehicle travelled across the center line and went off

of the west side of Missouri 111. The vehicle impacted a ditch, causing it to overturn one time. The vehicle came to rest on the driver's side off the west side of the roadway. Gladden did not receive any injuries. His passengers, George F. Barker, age 73, of Mound City, and Janice B. Gladden, age 71, of Craig, received minor injuries. They were taken by the

Atchison-Holt Ambulance to Community Hospital-Fairfax, MO. Both passengers were wearing seat belts while the driver was not. The vehicle received extensive damage. Corporal M.R. Heits of the Missouri State Highway Patrol investigated the accident. He was assisted by the Holt County Sheriff's Office and the Craig First Responders.

LEGAL NOTICES

Public Notice

To all citizens of Craig, MO, the collection drop off bin for Cans for Cancer is for aluminum cans only! Please dispose of your own garbage. All funds used for Holt County cancer patients, please show some respect and use the collection bin properly.

Thank You,
30/2tc *City of Craig, Board of Aldermen and Mayor*

**IN THE CIRCUIT COURT OF
HOLT COUNTY, MISSOURI - PROBATE DIVISION**
To All Persons Interested in the Estate of DIANA J. HULL, a disabled person.
In the Estate of: DIANA J. HULL
Estate Number: 13HO-PR00003
On the 29th day of January, 2013, EDWARD S. MENG was appointed conservator of the estate of DIANA J. HULL, a person adjudicated disabled under the laws of Missouri by the Probate Division of the Circuit Court of Holt County, Missouri. The business address of the conservator is 30094 Holt 300, Oregon, MO 64473. All creditors of said disabled person are notified to file their claims in the Probate Division of the Circuit Court.
Date of first publication is February 7, 2013.

Karen L. Frede,
31/4tc *Clerk of the Probate Division of the
Circuit Court of Holt County, Missouri*

Public Notice City of Craig Citizens

The City of Craig, MO, Mayor and Board of Aldermen hereby give notice to property owners in Craig that the city will be enforcing all city ordinances referencing weed/debris, dangerous buildings, and animals running at large. The city will notify you in writing of said nuisance violation as set forth to you by the City of Craig. If nuisance not abated within allotted time, citations and fines will be issued.

Your cooperation is appreciated,
30/2tc *Mayor and Board of Aldermen*

**IN THE CIRCUIT COURT OF
HOLT COUNTY, MISSOURI - PROBATE DIVISION**
In the Estate of: Wendell L. Hinkle)
Deceased) **Estate No. 13HO-PR00005**

NOTICE TO CREDITORS
To all persons interested in the Estate of **Wendell L. Hinkle**, Decedent:
On January 29, 2013, a small estate affidavit was filed by the distributees for the Decedent under Section 473.097, RSMo., with the Probate Division of the Circuit Court of Holt County, Missouri.
All creditors of the Decedent, who died on September 14, 2012, are notified that Section 473.444, RSMo., sets a limitation period that would bar claims one year after the death of the decedent. A creditor may request that this estate be opened for administration.
Receipt of this notice should be construed by the recipient to indicate that the recipient may possibly have a beneficial interest in the estate. The nature and extent of any person's interest, if any, may possibly be determined from the affidavit on this estate filed in the Probate Division of the Circuit Court of Holt County, Missouri.
The attorney for affiant and distributees is G. Brent Powers. The attorney's business address is 3715 Beck Road, D401, St. Joseph, MO 64506.
Date of first publication is February 7, 2013.

Karen Frede,
31/2tp *Clerk of the Probate Division of the
Circuit Court of Holt County, Missouri*

**Community Hospital
Fairfax**

26136 US Hwy 59 Fairfax, MO 64446

Look Who is Wearing Red in Honor of Heart Health!

Community Hospital-Fairfax, Feb. 1
Citizens Bank & Trust-Mound City Branch, Feb. 1
Citizens Bank & Trust-Craig Branch, Feb. 1
Tarkio R-1 Schools, Feb. 1
Tiffany Heights, Mound City, Feb. 1
Atchison County 911, Feb. 3-8
Tri-City Friendship Center, Maitland, Feb. 4
Shelter Insurance, Rock Port, Feb. 5
Crafter's Barn, Tarkio, Feb. 5

Call the CH-F Development Office at 660-686-2330 today to claim your Wear Red Day this February.

Have A Heart Wear Red
Challenge
February 2013

Solid Waste District to fund recycling projects

The Northwest Missouri Regional Solid Waste Management District has announced the availability of grant funds from the Missouri Department of Natural Resources to fund recycling and waste reduction projects in the public, private and not-for-profit sectors throughout Atchison, Gentry, Holt, Nodaway, and Worth counties.

The grant funds are intended to reduce the amount of waste entering the local waste stream and/or to facilitate recycling. Any individual or organization with a project to recycle, reduce, or reuse such items as: paper, organic waste, resin plastics, or electronics can submit an application and may be awarded funds to support their project.

Previous grants have included the purchase of wood chippers, recycling bins, composting materials, recycling curricula, and various equipment that assists in recycling or waste reduction activities. District grant funds have also been used for electronic waste collections, household hazardous waste and white goods collections; outdoor classrooms, recycling education and recycling business expansions.

Preference shall be given to projects that reduce, reuse, re-

cycle or strengthen consumer demand for post-consumer wastes, including paper, glass, plastics, demolition waste, organic waste, yard waste, waste oil and electronics. Applications will be evaluated according to several criteria. Some of those criteria are:

- How well the project contributes to community-based economic development.
- If the project promotes waste reduction or recycling.
- Project feasibility.
- If the project has an effective marketing strategy.
- If the project can be imple-

mented in a timely manner.

- How well the project complies with federal, state and local requirements.

Those individuals or entities interested in applying for funds for a waste reduction or recycling project may contact Linda Laderoute at (660) 582-5121 or e-mail lin da@nwmorcog.org to request an application. Applications can also be found online at <http://recycle.nwmorcog.org/>.

The application deadline is 3:00 p.m. Monday, April 1, 2013.

Missouri Western Fall 2012 President's List

Missouri Western State University in St. Joseph, MO, announced the names of the 336 students selected to the President's Honor Roll for the fall semester 2012. Students who have carried 12 hours or more for graded credit and have earned a grade point average of 4.0 qualify for the honor.

The Missouri Western students selected for the President's Honor Roll from this area are: Joel Luzmoor and Synthia Tunnell, Mound City, MO; and Jaymee Kampe, Oregon, MO.

Drought continues to pose risk to area

The snow recently has added valuable moisture to the soil. However, the area needs considerable more moisture to replenish the lost subsoil moisture from last year. Subsoil moisture continues to be low and the slow gentle rain events will be needed to add moisture.

Exceptional drought risks continue for those growers that have droughty soils and soils with low infiltration rates. Also, soils which have changes in texture through the profile will slow movement through the soil profile.

Permanent cool season grass pastures set tillers in the fall and stressed plants will have reduced grass yields this spring. Growers

should plan ahead on needs and plant additional small grains and other alternative forages to grow feed and rest permanent pastures so they can recover.

Crop insurance and grain prices reduced the financial risk in 2012. It would be wise to keep in mind those inputs that are necessary to maintain crop yields. Growers also need to examine those inputs which may not provide a consistent return on investment.

For more information, contact Wayne Flanary at 660-446-3724, Heather Benedict at 660-425-6434 or Wyatt Miller at 660-776-6961, Regional Agronomists, University of Missouri Extension. This region has expanded to include Ray, Carroll, Lafayette and Saline counties.

Missouri Western Fall 2012 Dean's List

Missouri Western State University in St. Joseph, MO, announced the names of the 695 students selected to the Dean's Honor Roll for the fall semester 2012. Students who have carried 12 hours or more for graded credit and have earned a grade point average of 3.5 or better qualify for the honor.

The Missouri Western students selected to the Dean's Honor Roll from this area are: Nicolette Rogers, Craig, MO; Jennifer Kieser, Forest City, MO; Kerri Boyd, Dustin Knapp and Isaiah Miller, Mound City, MO; and Shantell Hughes and Abigayle Messick, Oregon, MO.

**AMERICAN POWER.
AMERICAN PRIDE.**

Oreck®, an American success story, is proud to announce our NEW Pro Series Power Teams – more advanced, more durable, more Oreck.

Pro Series Platinum Pilot™ Power Team

NEW Pro Series Gold Power Team

NEW Pro Series Silver Power Team

NEW Pro Series Oreck XL Client™ Power Team

NEW Pro Series Power Teams:

- **Lightweight:** 10 lbs. or less*
- **Powerful:** 102 mph airflow at the floor
- Deep cleaning rollerbrush spins at up to 6,500 rpm**
- Ergonomic Helping Hand® Handle

- **FREE** Handheld Vac for above the floor messes
- Hypo-allergenic HEPA quality filtration
- **Variable features:** Up to 10-yr limited warranty* and 10 free tune-ups*

*Approximate weight without cord.

Try a Pro Series Power Team today with our 30 day risk-free trial. If you don't love it, you don't keep it.

**BUY 2
cleaning products
GET 1
FREE**

**VACUUMS
STARTING
AT \$199 -
UPRIGHTS
ONLY.**

ORECK
AUTHORIZED DEALER

BEST BRANDS PLUS

2605 South Main Street
Maryville, MO
660 582-2815
Hours: Mon. - Fri. 9 AM to 6:30 PM,
Sat. 9 AM to 6 PM

NorthwestCell

1218 South Main Maryville, MO 64468
660.582.3334 | 800.331.6341 | www.nwmccl.com

Lifeline Program NorthwestCell Customers in Missouri

Lifeline is a government program that offers qualified individuals a discount on their monthly local telephone bill. Each state has its own guidelines to qualify. Lifeline is available on one telephone service per household, whether wireline or wireless.

How much can I save on my phone bill?
NorthwestCell offers two Lifeline Plan options, a \$17.95 plan and \$21.95 plan. You will save up to \$9.25 on either of these selected plans.

How do I know if I'm eligible?
You're eligible for Lifeline if you participate in any of the following programs:

1. MO Health Net (Medicaid)
2. Supplemental Security Income (Food Stamps)
3. Supplemental Security Income (SSI)
4. Low-Income Home Energy Assistance (LIHEAP)
5. Federal Public Housing Assistance (Section 8)
6. Temporary Assistance for Needy Families (TANF)
7. National School Lunch Free Lunch Program
8. 135% of the Federal Poverty Level

Are there any restrictions?
Lifeline can only be used for one telephone per household—either wireless or wireline.

How do I apply?
Applications are available at social services offices, NorthwestCell's main office, all agent locations or online at www.nwmccl.com. You may also contact us at (800) 331-6341.

Other Information:
Discounts are available on select handsets. Please see retail office for more information.

How do I continue to receive Lifeline benefits?
Eligibility is reviewed periodically. Your benefits will be discontinued when you no longer meet the eligibility requirements or when proof of eligibility is not received. You are responsible for contacting NorthwestCell if you are no longer eligible for Lifeline Service.

Being a Lifeline customer does not protect you from being disconnected if you fail to pay your telephone bill. Normal collection practices apply.



Up and over for the layup - Is Mound City's Emily Wedlock, back, while being guarded by South Holt Lady Knight, Sarah Costello. The Lady Panthers defeated the Lady Knights by a score of 56-40 on Monday, January 28.



Brett Johnson - Goes up for the shot in the game with South Holt played in Mound City on Monday, January 28. The Panthers won by a score of 70-22. Johnson scored four points and pulled down four rebounds in the contest.



Mound City senior, Alex Phillips, left - Scored her 1,000th career point in the game against South Holt played in Mound City on Monday, January 28. She dominated the floor for the Lady Panthers that night with a double-double, 28 points and 12 rebounds. Trying to keep Phillips away from the basket is South Holt Lady Knight, Emily Cox, right.



Mound City Panther, Hayden Marrs - Tries to get a shot around South Holt defender, Chase Howell, in the Panthers' victory over the Knights on Monday, January 28.

Panthers claw the Knights at Mound City

The Mound City Panthers hosted the South Holt Knights in high school basketball action on Monday, January 28. The Panthers were victorious in both the girls' and boys' varsity games.

The Lady Panthers jumped out to a 17-9 lead in the first quarter over the Lady Knights. South Holt, however, outscored Mound City by one point in the second stanza, 5-4, making the half-time score, 21-14, Mound City. The Lady Panthers controlled the third quarter besting the Lady Knights, 20-11. Scoring evened out in the last frame as both teams added 15 points. The final score was a victory for Mound City, 56-40.

Alex Phillips dominated the floor for Mound City with a double-double, 28 points and 12 rebounds. Phillips also recorded an assist, blocked two shots and stole the ball once. Phillips also scored her 1,000th career point in the game with South Holt.

Kendey Eaton was also in double scoring digits with 13 points for the Lady Panthers. Eaton recorded five rebounds and one assist. Emily Wedlock posted six points, five re-

bounds, one assist, a blocked shot and two steals. Scoring two points each for the Lady Panthers were Lena Ashford, Haylee Clifton, Carina Metzgar and Eryn Acton. Ashford added three rebounds, one assist, and five steals. Clifton recorded three rebounds, three assists and two steals. Metzgar had two rebounds and one assist. Acton pulled down a rebound. Jessica Johnson scored one point and pulled down a rebound. Kenzie Ashford recorded a rebound, had two assists and two steals.

In the boys' contest, Mound City dominated the court from the start of the game. Outscoring South Holt in every quarter, the Panthers claimed the 70-22 win.

Two Mound City Panthers, Miles Loucks and Hayston Wilson, were in double scoring figures with 11 points each. Loucks also stole the ball six times, and Wilson recorded four rebounds. Kase Newcomb scored eight points and had two rebounds in the game. Dayne Messer scored seven points and had a rebound and two steals. Hayden Marrs recorded six points, two rebounds, three assists

and two steals. Dylan Honea also scored six points and had four rebounds, a blocked shot and a steal. Luke Sanders and Hunter Holstine both scored five points. Sanders had four rebounds, eight assists and three steals. Holstine recorded four rebounds. Brett Johnson and Dalton Honea scored four points each. Johnson also had four rebounds, an assist and two steals. Honea posted



South Holt Knight, Tanner Chaney - Protects the basketball in action with the Panthers at Mound City on Monday, January 28.

two rebounds and two steals. Josh Johnson rounded out Mound City's scoring with three points. He also had an assist and two steals.



Wyatt Jackson - Gets ready to take the ball inside for the South Holt Knights in the game with the Panthers at Mound City on Monday, January 28.

The Mound City R-2 students listed below have demonstrated SAFE, RESPECTFUL, and RESPONSIBLE behaviors at all times, in all locations of the school for the past month.

The elementary Preschool - Fourth grade students included: Abigail Atkins, Nichole Brammann, Zayla Brown, Carl Carver, Macee Crider, Sophia Davis, Trinity Diggs, Graison Gegen, Abby Gibson, Audrey Gibson, Cole Gillenwater, Daniel Griffin, Madilynn Griffin, Rachel Grover, Jacob Hall, Blake Hayes, William Heck, Baileyann Hollis, Rayla Hufford, Kendall Hux, Emily Killin, Haley Knapp, Elizabeth Laukemper, Addison Lewis, Riley Lewis, Alisha Lomax, Logan Lomax, Ava Grace Luna, Amanda Martin, Abigeal McCall, Sydney Meadows, Corbin Miles, Reese Miles, Phoebe Morris, Abigail Nauman, Riley Olason, Maggie Osburn, Tony Osburn, John Oswald, Noah Oswald, Caimbre Panning, Destiny Panning, Kishia Panning, KyRyein Panning, Shailea Panning, Dalton Peters, Ernest Peters, Brailey Poppa, Ava Portman, Taylor Quilty, Aviree Roup, Creyton Roup, Morgann Selleck, Paycee Slusher, Jazmine Talbot, Bryson Tenney, Brendan Tubbs, Connor Tubbs, Joslin Ungles, Keaton Zembles, and Lane Zembles.

Middle School Fifth - Eighth grade students included: Carley Baker, Roni Barwick, Alexander Carver, Maggie Caton, Kimberly Corbin, Malori Davis, Emma Derr, Savanah Derr, Destiny Diggs, Joeigh Eaton, Josiah Foust, Sylvia Foust, Emma Gibson, Destiny Grover, Bailey Hayworth, Gabrielle Heck, Riley Holstine, Madison Hopkins, Skyler Hufford, Brendon Jenkins, Cameron Laukemper, Quentin Lenz, Adrienne Messer, Wyatt Meyer, Victoria Nauman, Kyrstin Peters, Tess Phillips, Bayleigh Portman, Bailee Schueth, Katie Selleck, Sean Shepherd, Ben Shifflett, Kaitie Smith, Jillian Stiens, Jacobi Tunnell, Tristan VanDerHeide, Brittany Webster, Hannah Wedlock, Cassidy Wennihan, Dara Young, and Kooper Young.

High School Ninth - Twelfth grade students included: Eryn Acton, Kaisten Ashford, Kenzie Ashford, Lena Ashford, Jackson Bowness, Samona Carver, Haylee Clifton, Taylor Coker, Dalton Dreher, Kendey Eaton, Abbey Forehand, Lily Forehand, Hailey Garman, Lily Grant, Chance Hollis, Hunter Holstine, Dalton Honea, Dylan Honea, Jarrod Hurst, Patrick Hurst, Sydney Ireland, Brett Johnson, Jessica Johnson, Josh Johnson, Chelsea Killin, Montana Kunkel, Paige Kunkel, Kelton Kurtz, Miles Loucks, Hayden Marrs, Shane McKittrick, Dayne Messer, Carina Metzgar, Jorden Miller, Kyler Miles, Rikki Miller, Shaylin Miller, Sara Murphy, Shinju Nakayama, Devin Nauman, Grace Newcomb, Kase Newcomb, Alex Phillips, Elijah Poe, Timothy Runnels, Hilary Russell, Luke Sanders, Mae Sanders, Sarah Schoonover, Thomas Shifflett, Colton Smith, Spencer Staples, Emily Thomas, Jennifer Thomas, Ashley VanDerHeide, James Walker, Chandler Wilson, Hayston Wilson, and Samuel Wilson.

Mound City takes two wins from Rock Port

The Mound City Panthers hosted the Rock Port Blue Jays on Friday, February 1, at the gym for courtwarming and high school conference basketball action. Two quarters of junior varsity boys' basketball preceded the coronation of Mound City Courtwarming King Brett Johnson and Queen Chelsea Killin. An open house for the new weight room was also held during the evening.

In the girls' game, the Lady Panthers jumped out to a 15-8



Freshman Lady Panther Jessica Johnson- Looked to pass in the Lady Panthers' 56-23 conference win over Rock Port on Friday, February 1, in Mound City.

first quarter lead. Great defense and offense by Mound City in the second frame resulted in a 27-15 lead by the half. In the third quarter, Mound City tacked up 18 points, before finishing the night with a 56-23 conference win over the Lady Jays.

AlexPhillipscored27points to lead the Lady Panther offense. She also pulled down 13 rebounds, and had 5 assists and a blocked shot. Lena Ashford had 10 points, 2 rebounds, an assist and 2 steals. Haylee Clifton had 9 points and 2 assists. Emily Wedlock had 4 points, 6 rebounds, a blocked shot and a steal. Kenzie Ashford had 4 points and a steal. Kendey Eaton had 2 points, 4 rebounds, 4 assists and 2 steals. Carina Metzgar and Mae Sanders each added a rebound.

The Rock Port Blue Jays and the Mound City Panthers switched scoring leads throughout the game, with the Jays outscoring the Panthers 11-9 in the first quarter, and 12-10 in the second quarter. A momentum shift, after the break, created an opportunity for the Panthers to pull to within two points of the Blue Jays. Mound City trailed 32-30 at the end of the third quarter. A strong finish by the Panthers in the final frame gave Mound City the 40-35 conference win.

Luke Sanders led the scoring for the Panthers with 13 points, and he had 3 rebounds. Miles Loucks, Hayston Wilson and Brett Johnson chipped in with 7 points each. Miles added 7 rebounds and an assist. Hayston added 6 rebounds. Brett added 2 rebounds, 2 assists and a steal. Hayden Marrs had 4 points, 3 rebounds, an assist and a steal. Dalton Honea had 2 points, a rebound and an assist. Kase Newcomb pulled down 4 rebounds and had 2 blocked shots.



Senior Panther Hayston Wilson- Prepared to pass the ball up the floor during varsity conference action on Friday, February 1, in Mound City. Hayston tacked up 7 points in the 40-35 Mound City win.

Community Calendar

brought to you by



Member FDIC

NODAWAY VALLEY BANK the right bank...

614 State Street • Mound City, MO • 660-442-3131

February 8 - Mound City JV/V Basketball vs. CFX at Mound City (Cub Clinic Night) - 5 p.m.

February 10 - Valentine's Day Dinner at Mound City First Christian Church - 5 p.m., 6 p.m. & 7 p.m.

February 11 - Mound City JV/V Basketball vs. North Nodaway at Mound City (Senior Night) - 5 p.m.

February 12 - Story Time at Mound City Library - 10:30 a.m.

February 12 - Mound City JV/V Basketball at Northeast Nodaway - 5 p.m.

February 13 - Men's Drug and Alcohol Program at 304 E. 5th St., Mound City - 7-8 p.m.

February 14 - Valentine's Day

February 15 - Mound City JV/V Basketball at West Nodaway - 5 p.m.

February 18 - No School at Mound City R-2 - Presidents' Day

February 18-23 - Mound City V Basketball at Districts at North Andrew - TBA

Every Friday at the Mound City Nutrition Site
Doughnuts, Doughnut Holes, Cinnamon Rolls
8:30 a.m. until Sold Out

Take Off Pounds Sensibly (TOPS), non-profit,
non-religious weight-loss support group, Mondays, 4:30 p.m.
Holy Trinity Lutheran Church, Mound City

Deadline for Calendar Items is Monday Evening

Lobby Hours: Monday-Thursday 9 a.m.-4 p.m.; Friday 9 a.m.-5 p.m.

Drive-In Window: Monday-Thursday 8 a.m.-5 p.m.; Friday 8 a.m.-5:30 p.m.; Saturday 8 a.m.-12 noon

CHECK OUT THESE OTHER CONVENIENT NVB LOCATIONS

MARYVILLE
660.562.3232
Third & Main Street
209 N Buchanan (drive-up only)*
1303 S Main*

SAVANNAH
816.324.3158
301 S US Hwy 71*

ST. JOSEPH
816.364.5678
4001 N Belt Hwy & Cook Road*
402 N Belt Hwy & Faraon Street*
1701 S Belt Hwy*
1302 S Riverside & Mitchell Ave.*
6304 King Hill Avenue*

*Drive-up ATMs

nvb.com

FOR SALE

FOR SALE- Butcher hogs, 1/2 or whole. Larry Wright, 816-294-6788 or 660-683-5455. 30/2tp



Denny Patterson, Field Representative

HOSPITALIZATION
HEART & CANCER INS.
MEDICARE SUPPLEMENTS
HOME HEALTH CARE
DENTAL & VISION
www.ReserveNational.com

Office:
2921 N. Belt Hwy., Suite U-17
St. Joseph, MO 64506
Office Toll Free 866-650-2710
OKC Toll Free 800-654-9106
Cell 816-261-1000

Brad Pankau's Home & Farm Repair

Roofing, siding, interior/exterior painting, decks, gutter installation & cleaning, electrical & plumbing, drywall & interior remodeling, tree trimming & removal, etc.

BARN & IMPLEMENT SHED REPAIR!

No job is too small! ~ Fully Insured

Call 660-442-3354, 660-254-0156, or 660-442-6343.

New John Deere Skid Steer

• Heated And Air Conditioned Cab



Rates:
• \$200.00 per day
• \$100.00/ 2 hours

McIntire Building Center

Do It Best Rental Center

108 W. 7th St. • Mound City, MO • 660-442-5416
Hours: Monday-Friday - 7:30 a.m. - 5 p.m. Saturday - 7:30 a.m. - 4 p.m.

Holt County real estate transfers

Jeffrey S. Miller, by successor trustee, and Karen R. Miller, by successor trustee, to Federal Home Loan Mortgage Corporation, McLean, VA; All of Lots 1 and 4 in Block 42 in the original town of Oregon, MO.

Federal National Mortgage Association to Robert James and Nancy James, Mound City, MO; A tract of land in Block 57 in the original town of Mound City.

William D. Isaac and Naomi F. Isaac to Mike O'Meara of St. Joseph, MO; The West 60 feet of Lot 3 and all of Lot 4 in the Don Hall, Inc., 1st Addition in the Village of Big Lake.

Ginger Hayes to Keith Miller and Jennifer Miller, Maitland, MO; Tracts of land in Lots 9 and 10 in Block 9 in Elliott Heights Addition in the city of Maitland.

Richard L. Rippen and Susan J. Rippen to Richard L. Rippen, T.O.D., and Susan J. Rippen, T.O.D.; Beginning at the Southwest Corner of the premises described in a certain conveyance made November 29, 1914, and Recorded in Book 173, Page 565, Deed of Records of Holt County, see record for full description.

Nancy Lea Zachary Revocable Trust to Nancy Ann Zachary and Richard Alan Zachary, Kansas City, MO; Tract 1: The south Half of the Northwest Quarter of Section Ten, except a tract commencing at the Northeast corner of the South Half of

the Northwest Quarter of said Section Ten, see record for full description; Tract 2: The South 13 acres of the Southwest Quarter of the Southeast Quarter of Section Nine; Also a tract commencing at the Northwest corner of the Northeast Quarter of Section sixteen, see record for full description; Tract 3: The North half of the Southwest Quarter of Section 10, Township 62, Range 39 West, of the 5th p.m.; Tract 4: The East 36 acres of the North Half of the Northeast Quarter of Section 9 of Township 62 of Range 39, Holt County, MO; and Tract 5: All that part of the Northwest Quarter of Section 7, Township 62, of Range 39, lying north of the road running through the Old George W. Gaskill Place, see record for full description.

Joe H. Godemann to Terry Hayworth and Misty Hayworth, Craig, MO; All of Lots 10 and 11 in Funny Farm Lake Lots in the Village of Big Lake.

John Allen Dodson, deceased, by personal representatives, to John B. Dodson and Amanda Beth Ohlensehlen, Mound City, MO; Commonly known as farmland south of Bigelow and legally described as: That part of the Southwest Quarter of Section 14, and the Southeast Quarter of Section 15, lying South and West of the railroad, all in Township 61 North, of Range 39 West of the 5th P.M., see record for full description.

Weldon's Tree Service

**Tree Trimming/Transplanting
Tree and Stump Removal/Tree Shearing**

**Insured ~ Public Liability
Residential & Commercial**

FREE ESTIMATES

(660) 582-3267



MARYVILLE GLASS AND LOCK

- Overhead doors and operators
- Custom residential replacement windows
- Complete locksmithing services
- Commercial - residential glass replacements



(660) 582-3131

5TH AND BUCHANAN, MARYVILLE



**NAUMAN
CONSTRUCTION &
CABINET SHOP, INC.**
GENERAL CONTRACTORS

*New Construction, Remodeling, Cabinets.
Granite & Solid Surface Countertops*

307 State Street • Mound City, MO 64470

Shop: 660-442-5290

Hugh: 816-383-3001

Tracy: 816-596-7159

Website and e-mail:
www.naumanconstruction.com
tracy@naumanconstruction.com



**J & E
Concrete**

Commercial & Residential Concrete Work

Jeff Karsten

Cell: 816-262-5933

Free Estimates

Shop Falls City, NE

Less than a 30 minute drive from Mound City - Falls City has a lot to offer

Yesterday's Closet

**Stretch your clothing dollars -
Quality Pre-Owned Clothing.**

1606 Stone St. • Falls City, NE
402-245-4888

Great selection of man cave and decor items!
Stop and Visit Our Annex, Called Etc.
1604 Stone St. • Falls City, NE



Daily Specials

1124 Harlan Street

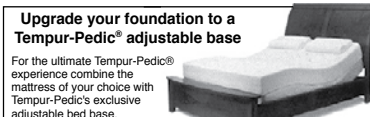
Falls City, NE 68355

402-245-2549

Serving From 7 a.m. - 8 p.m.

Chaney Furniture Co.

Since 1921



Upgrade your foundation to a
Tempur-Pedic® adjustable base

For the ultimate Tempur-Pedic®
experience combine the
mattress of your choice with
Tempur-Pedic's exclusive
adjustable bed base.

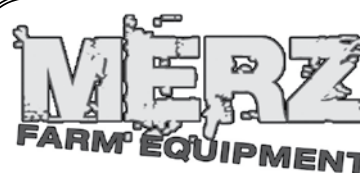
1523 Stone St. • PO Box 267

Falls City, NE

402-245-3912

877-245-4844

www.chaneyfurniture.com



North Hwy. 73 • Falls City, NE

402-245-2419

**We're here for your
White Planter needs.**



MASSEY FERGUSON



Answers & Low Prices Down Every Aisle™

It's Clearance Time!
**From winter clothes to
every day needs...**

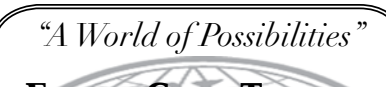
402-245-4588

1521 E. 14th St. (East Highway 159)
Falls City, NE



RadioShack
DEALER

1610 Stone St. • Falls City
402-245-5029



**FALLS CITY TRAVEL
COMPANY**

**KELLY CARPENTER,
MANAGER**

1608 Stone Street,

P.O. Box 26

Falls City

Fax & Phone: 402-245-3344

fctravel@scentco.net



FEBRUARY BARGAINS

5 pk. GE BW Spiral Compact Fluorescent Bulbs

SALE \$9.99 • Reg. \$13.99

Ziplock 15 ct. Gallon or

20 ct. Quart Heavy Duty Freezer Bags

SALE 2/\$5

402-245-2725

1519 Stone St. • Falls City



**Heritage
Falls
Candles
& Gifts**

**NEW VALENTINE'S DAY
MERCHANDISE**

Free Gift Wrapping

Flavors of the Month
Black Cherry, Love Spell, Sweet Cinnamon

1614 Stone St., Falls City, NE

402-245-3443 (Phone & Fax)

www.heritagefallscandles.com



**PAINT • GLASS • WALLPAPER
FLOOR COVERING • HARDWARE • AUTO GLASS**

**See us for your flooring,
painting projects &
window projects.**

1619 Chase Street • Falls City, NE

Phone: (402) 245-4444

Mary's Appliance

1612 Stone St. • Falls City
402-245-4003

FREE 10-YEAR

**MAJOR PARTS WARRANTY WITH
EVERY APPLIANCE PURCHASED**

Must bring in coupon

Norma's Antique Mall, LLC

*Fine Quality Antiques
& Collectibles*

Norma Brittell, Owner

normasantiquemall@yahoo.com

normasantiquemall.blogspot.com

1715 Stone St. • Falls City

402-245-4338

Hours:

Monday Through Saturday

10:00 a.m. - 5:00 p.m.



**America's
Drive-In.**

*Check out our special on
footlong hot dogs and tots!*



1305 Harlan, Falls City, NE

402-245-3525

OPEN UNTIL 10 P.M. DAILY



**SPECIAL
Combo #1 is \$5**

1324 Harlan Street

Falls City, NE 68355

402-245-3355

Open 10:30 a.m.-9:30 p.m.

Farm & City Supply

Get ready for spring!

Order talc/graphite now
for extra savings!

2618 Harlan Street • Falls City, NE 68355

ACE Hardware

402-245-3400

La Fiesta

Mexican Restaurant
Authentic Mexican Food

\$2.00 OFF

M-TH - 11 a.m. - 9 p.m.

F-S - 11 a.m. - 10 p.m.

SUN - 11 a.m. - 9 p.m.

1516 Stone Ave., Falls City

402-245-4400

Advertising Space Available!!!



ADVERTISING
CALL 660-442-5423

Classifieds

GET THE JOB DONE!

BUY • SELL • TRADE • RENT
HIRE • THANK YOU/REMEMBERING • LEGAL SERVICES

CALL THE MOUND CITY NEWS TO PLACE YOUR AD • 660-442-5423

THANK YOU/REMEMBERING

The family of Marguerite Gillenwater would like to express special thanks to all of you who visited her during her years at the Oregon Care Center; to you who sent flowers or plants and memorials; and for all the thoughts and prayers. Special thanks to the Chamberlain Funeral Home in Mound City; to Rev. Jim Brown and the Christian Fellowship Church; and to Rev. Jim Broker. We truly appreciate your thoughtfulness.

MISCELLANEOUS

HOWARD'S GUN REPAIR- 12315 Hwy. 59, Craig, MO, 64437. 660-683-9401. 17/tfc

RAFTER CROSS VETERINARY SERVICES- In Mound City, Dr. Roy Wilson. 660-442-3101. 44/tfc

FREE PALLETS AND END ROLLS- At the Holt County Publishing building north of Mound City on Hwy. 59. 12/tfc

GREG'S JEWELRY - Located at 307 E. 5th St., in Mound City, MO, offers hearts in pendants, lockets, charms, rings and more for your special someone on Valentine's Day. Call 660-442-3739 for all your jewelry needs. 31/tfc

EMU OIL- Arthritis and joint pain, burns and sunburns, aging skin, cuts and abrasions. Hand lotion. G & L Enterprises. Call 816-387-7332 or 660-442-5688. 40/tfc

HELP WANTED

DRIVERS- CDL-B: Great pay, home time! No forced dispatch! New singles from St. Joseph, MO, to surrounding states. Apply www.truckmovers.com or 888-567-4861. 28/4tc

NOW TAKING APPLICATIONS- For wait staff at The Klub in Mound City. Call Christy at 660-442-5582. 30/4tc

GIT-R-DONE TREE SERVICE- Needing part-time/full-time help. Experience with chain saw necessary. For more details call 816-390-6649 or 660-446-2076. 31/tfc

DRIVERS NEEDED- For hoppers and belts-Midwest, weekend home time, health insurance, 401K, and paid vacations. Need clean MRV, 2 years OTR experience, and pass drug screen. Call Sarah at (785) 242-3070. 30/2tc

Commercial or Personal

Printing

- * Envelopes
- * Carbonless Forms

Mound City
NEWS
511 State, Mound City, MO
660-442-5423

REAL ESTATE

NEWLY REMODELED- Two large two-bedroom apartments in Oregon, MO, with washer and dryer hook-ups. Water, sewer, trash included. Nice three-bedroom house for rent in Forest City, MO. Contact Mike Sipes at (816) 294-9288. 30/2tc

NEW LISTING- Two-bedroom mobile home on block foundation located in Maitland, MO, close to elementary school. **United Country-McChristy Realty & Auction**, Randy Patterson, 816-803-3951. 30/4tc

FOR RENT- 2-bedroom home on large corner lot. No pets. No smoking. 1212 Mill St., Mound City, MO. www.barnesrealty.com, 660-572-0049. 31/tfc

Jim Clement
AUCTIONS
660-442-5436
"The Voice Everybody Knows"

ENTERPRISE REALTY

Jim Loucks, Sales Agent
816-390-2749
Office 877-669-7653
www.entrealty.com

LAND FOR SALE



FANTASTIC LOCATION

This 3-4 bedroom has a 2-car garage plus another garage. There are 3 bedrooms, 2 full baths, lies on 4 lots on Savannah St. in Mound City with large eat-in kitchen. Large living area, family room, dining room and is ready for new owners. Priced at only \$68,000.

Miller Realty
Steph Miller, Broker
www.miller-realty.net • Mound City
1-888-442-5787



WOW!

That is the only way to describe this beautiful, spacious home. Clean lines, great open space, modern and cozy at the same time. The home lies on 6 large lots with a bird sanctuary in the backyard and large deck just off of the house. There is a nice storage shed. There are 3 bedrooms, 2 1/2 baths, large eat-in kitchen, vaulted ceilings and is one level for families or retired couples. Priced at only \$86,900.

Miller Realty
Steph Miller, Broker
www.miller-realty.net • Mound City
1-888-442-5787

HELP WANTED - Full-Time Clerk

Rogers Pharmacy in Mound City is seeking a self-motivated individual for a full-time clerk position. Must apply in person.

No phone calls please.

607 State St.
Mound City, MO



HELP WANTED

Citizens Bank & Trust is accepting applications for a clerical/teller position. Knowledge of computers, organizational & clerical skills are highly recommended.

Applications will be accepted until 3 p.m. on Friday, February 15, 2013.

Applications and additional information may be obtained at 105 S. Main St., Craig, MO, 64437; or by calling 660-683-5333.

Member FDIC



Parts and Services Positions Available

Send resume to Mitch at mitch@merzfarmequipment.com or apply in person.

North Hwy. 73 • Falls City, NE • 402-245-2419

www.MerzFarmEquipment.com

McDonald's of Mound City is Now Hiring All Shifts

Part-Time Members

Must be able to work nights and weekends!
Must take pride in a job well done!

We provide:

- Grade incentives
- Free meals on breaks
- Paid vacation after one year



Apply online:
www.mcdonalds.com

Or in person at our
Mound City McDonald's

We look forward to meeting you!!!

Randy Patterson

BROKER • REALTOR

816-803-3951 • E-mail: realtyman@yahoo.com



McChristy Realty & Auction

www.ucstjoe.com

Call Us for Details. - 816-232-7160



514 B State St. • Mound City, MO 64470

660-442-6500 • Cell: 816-387-3018

kathiclement@yahoo.com

Kathi Clement, Broker

CONSIGN NOW FREDERICKS' CONSIGNMENT AUCTION

Falls City, NE
Saturday, March 2

Farm Machinery & Misc.
Complete Farm Sales

REMINDER -

Deadline for sale bill is
Wednesday, February 13

Trucking Available

To Consign Call:
Leon - 402-245-3762
Steve - 402-245-3227
website available

EXCEPTIONAL INVESTMENT OPPORTUNITY FOR SALE BY OWNER

Three acres more/less located in Mound City, MO. Lovely two-bedroom home with many updates rented for \$300 per month; six-bay storage building (new roof), total monthly rent, \$345; 30x49 shop rented for \$150 per month; 26x24 barn divided for hobby use and vehicle storage. Other smaller buildings, large garden. Recent appraisal totals \$120,000, will sell for \$110,000 cash. Total monthly rent income is \$795. Income will exceed monthly payment.

Victoria Moore
660-339-7410



Casey Johnson,
Owner

660-442-6354

Licensed and Insured
Specializing with Trane and Heil models

Timberview Roofing

Chris Clement

Call:

816-390-3002 (Cell)

660-935-2219 (Office)

660-652-3033 (Home)

Making House Calls

Need a manicure or a pedicure or a simple nail trim?

Call 660-442-0169
(leave message)

Manicure \$10 (\$12 out of town)

Pedicure \$10 (\$12 out of town)

Licensed manicurist,
Rhonda Krueger

Perhaps you sent a lovely card,
Or sat quietly in a chair.
Perhaps you sent a funeral spray,
If so we saw it there.
Perhaps you spoke the kindest words,
As any friend could say;
Perhaps you were not there at all,
Just thought of us that day,
Whatever you did to console our hearts,
We thank you so much whatever the part.

The Arnold Rehm Family

PHILLIPS CONSTRUCTION

MOUND CITY, MO • 816-390-1727

For all of your metal building needs.

Double D Towing LLC

24 HOURS/DAY - 7 DAYS/WEEK

Mound City, MO

660-253-2432 (Cell)

660-442-0162

www.doubledtowingllc.com

Dale Heming, Dustin Heming, Kelly Graves



Brian A. Tubbs

Phone: 660-442-5989

Fax: 660-442-3574



Attorney At Law

tubbslaw@centurylink.net

The Law Office of Brian Tubbs LLC

Call for appointments

222 State Street • Mound City, MO 64470



A large crowd of chili connoisseurs- Arrived at the Mound City gym to sample as many as 13 varieties of chili made for the annual Chili Cook-Off on Thursday, January 31. Despite the frigid weather outside, that had prevented school from being held the previous day, a large crowd attended the event.

Mound City Chili Cook-Off well attended

Mound City R-2 elementary and middle school students and faculty welcomed over 245 guests to the annual Chili Cook-Off on Thursday, January 31, amidst blustery winter conditions outside.

Attendees purchased a tasting spoon, which allowed them to taste test 13 different kinds of chili prepared by the grades, Preschool through 8th grade, along with special recipes from elementary special education, middle school special education and Title I Reading. The purchase of the spoon also allowed patrons to vote for the favorite chili.

Each chili was secretly numbered and randomly manned by students and teachers during the course of the evening. When the votes were tallied, Miss Cheryl Mauderly's third grade class was voted the winning chili. Miss Mauderly claims the secret ingredient to the winning chili recipe, that she got from her dad, was the salsa.

Mr. Ryan Osburn's class earned second place in the cook-off, and Mrs. Darcy Kent's chili earned third place.



Mound City 3rd grade teacher, Miss Cheryl Mauderly, right- Served up another class's chili during the Mound City Chili Cook-Off on Thursday, January 31. Miss Mauderly's chili, wherever it was, was awarded chili champion.



Eighth grade student, Riley Holstine, right- Served up a bowl of #9 chili to Rick Barnes during the annual Chili Cook-Off on Thursday, January 31. Rick was one of 245 taste testers for this year's cook-off.

FSA reminds producers of upcoming deadline for noninsurable crops

Kami Hubach, Acting Executive Director for the Holt County Farm Service Agency (FSA), reminds producers that Friday, March 15, 2013, is the application closing date to sign up for Noninsured Crop Disaster Assistance Program (NAP) coverage on many crops, including native forage and pasture and most spring-seeded crops.

NAP provides financial assistance to producers of noninsurable crops when low yields, loss of inventory or prevented planting occur due to natural disasters. "Purchasing a crop insurance policy is an easy way for producers to mitigate risk," Hubach said. "The past few years have shown that natural disasters can severely impact an otherwise successful operation."

Hubach said the March 15th deadline also applies to persons who have a 2012 policy that expired and want to renew coverage for 2013. NAP coverage is available for crops only where insurance coverage is not available under Federal Crop Insurance policies provided by private insurance

agents.

The NAP program covers losses of more than 50 percent of normal yields or the farm's yield calculated using actual production histories. Payments for production lost in excess of 50 percent are paid at 55 percent of the values established for the crop.

NAP policies not only provide insurance protection, but may be a requirement to participate in other FSA programs, such as the Farm Storage Facility Loan program.

The cost per policy is \$250 per crop per producer with a \$750 cap per county, not to exceed \$1,875 for multi-county producers. NAP coverage begins 30 days after the application is filed and the \$250 administrative fee has been paid. The \$250 administrative fee is non-refundable.

Producers are encouraged to contact the Holt County FSA office to obtain NAP coverage or for additional information before the Friday, March 15, 2013, deadline. Information on the NAP program can also be found on FSA's website at www.fsa.usda.gov.



2013 South Holt Courtwarming Candidates

The South Holt R-1 Courtwarming Candidates- Have been chosen for the courtwarming celebration that will take place on Friday, February 8. The South Holt Knights will host the Tarkio Indians in conference action beginning with the girls' game at 6:00 p.m. The coronation will take place during a pep assembly on Thursday, February 7, at 2:30 p.m. Senior candidates pictured above include, left to right, back row: James Fuller, Paul Barclay and Chase Howell. Front row: Sarah Costello, Rachel Kurtz and Taylor Logan.

THURSDAY, FEBRUARY 14

- Gift ideas for that special someone
- Valentine's Day greeting cards
- Quality selection of wines for your sweetheart

Mound City, MO
(660) 442-3600

Valentine's Day Special

at The Klub
Restaurant

Special dinner available on Valentine's Day or order off of menu!!

Filet mignon with bleu cheese and onion confit, garlic mashed potatoes and sauteed vegetables

Lobster and shrimp stuffed ravioli, and sauteed vegetables

Dessert - Glass of champagne and chocolate covered strawberries

North End Of Nebraska St., Mound City, MO • 660-442-KLUB

GIVE THE GIFT OF RELAXATION

Swedish Massage 30 minutes - \$25 60 minutes - \$50	Deep Tissue Massage 30 minutes - \$30 60 minutes - \$60
--	--

OTHER SERVICES AVAILABLE: HAIRCUTS, HAIR COLOR, PERMS, WAXING, FACIALS & SPRAY TANNING

Indulge
SALON & BODYWORK

Hours:
Monday: 4 p.m. - 8 p.m.
Tuesday: 9 a.m. - 8 p.m.
Thursday: 9 a.m. - 8 p.m.
Saturday: 9 a.m. - 3 p.m.

Please call for an appointment at
(660) 446-3003 or (816) 244-6981
101 S. Washington Street • Oregon, MO 64473

DISCOUNTED **SMOKES & LIQUOR!**

CIGARETTE CARTON PRICES

Marlboro.....\$43.49

Marlboro Special Blend.....\$37.99

Pall Mall.....\$32.99

Camel.....\$40.99

Exeter.....\$21.49

Echo.....\$23.99

Decade.....\$22.49

Price per carton. While supplies last - plus tax. All cigarettes subject to change. **SURGEON GENERAL'S WARNING:** Quitting smoking now greatly reduces serious risks to your health.

Banquet hall facility available for rental

- Business Meetings
- Family Gatherings

Motel - \$39.99/night

SUNDAY BUFFET
11 a.m.-2:30 p.m.
\$10.99!
Includes Drink

PHILLIPS 66 **WENT** **SQUAW CREEK TRAVEL PLAZA**

Convenience Store Hours: 6 a.m. - 11 p.m.

NEW Restaurant Hours:
Monday-Friday - 7:30 a.m - 8:30 p.m.
Saturday-Sunday - 6 a.m. - 8:30 p.m.

Located at I-29 and Hwy. 159, Exit 79, Mound City, MO • 816-396-8514

OPEN 7 DAYS A WEEK!

NOW OFFERING

Daily Full Soup & Salad Bar

Saturday, Feb. 9 • DJ Monty

Sunday Lunch Special, Feb. 10

Fried Chicken, Meat Loaf & Homemade Desserts - Includes Soup & Salad Bar

Weekly Sunday Lunch Specials

Prop In Bar & Grill
Join Us on Facebook

Big Lake, MO
660-442-3411

CUSTOM WATERWORKS

Lawn Applications
(5 Application Program)
Seeding, Core Aerifying

CALL FOR A FREE ESTIMATE AND A GREENER, HEALTHIER, WEED FREE LAWN.

Applications start in March.

CUSTOM WATERWORKS

Call Jeremy at 816-262-1896 or Brett at 816-752-0197