

Mound City NEWS

Mound City, Missouri
Vol. 129, No. 36
75¢
www.moundcitynews.com

Serving all of Holt County, Missouri, since 1879. Home of Squaw Creek National Wildlife Refuge & Big Lake State Park.

THURSDAY • MARCH 19 • 2009

County Government Day is Monday

The 55th annual County Government/Bette Williams Day hosted by the Holt County American Legion Posts and Auxiliary Units will be held on Monday, March 23, beginning at 9:00 a.m. at the Holt County Courthouse.

American Legion Auxiliary representatives will give opening remarks as well as explain the aims and purposes of County Government Day.

County officials will be introduced as well as tours given of the county offices. Voter registration will also be addressed to all participants.

A luncheon will be served by the American Legion

Posts and Auxiliary Units.

Tiger and Tammy Parsons from the Buchanan County Drug Strike Force will be the guest speakers for the afternoon general assembly. The day will adjourn at 2:00 p.m.

Students attending County Government Day are asked to submit an essay entitled, "What I have learned at County Government Day." Cash awards will be given to the top four essays in the contest, as well as the first place winner qualifying for 4th District American Legion Auxiliary prize money and State Competition prize money.



Lauren Geiger of Mound City, left- Shown here with Senator Kit Bond, center, and co-delegate Evan McCartney of Nixa, MO, right, was privileged to travel to Washington, D.C., for the United States Senate Youth Program.

Lauren Geiger goes to Washington, D.C.

Lauren Geiger, Mound City senior, recently traveled to Washington, D.C., as part of being awarded a \$5,000 scholarship from the Hearst Foundation and participated in the 47th Annual United States Senate Youth Program (USSYP).

Each year this extremely competitive merit-based program brings 104 of the most outstanding high school students to Washington, D.C., for an intensive week-long study of the federal government and the people who lead it. The overall mission of the program is to help instill within each class of USSYP student delegates a more profound knowledge of the American political process and a lifelong commitment to public service.

Only two students are chosen from each state with two being added from the District of Columbia and two from the Department of Defense Education Activity which brought one student from Germany and one from Spain.

Transportation and all expenses for the trip were provided by the Hearst Foundation, no government funds are utilized. Lauren reported the students figured the average cost per student attending may have been in the \$15,000-\$20,000 range. Students were served three course meals, stayed in a luxury hotel and were driven everywhere by coach.

Seventeen military mentors were provided for groups of six to eight students from the five branches of military. These mentors were touted as the 'best of the best' and had impressive biographies. They provided leadership and protection throughout the students' stay in Washington, D.C.

The delegate students visit-

ed several monuments including the White House. While visiting the White House, they were introduced to President Obama after he took a picture with the group.

President Obama shook hands with every delegate as part of the event. As Lauren was standing close to the president, shaking hands of students higher up on the riser, he accidentally bumped her in the face with his elbow. He then turned and patted her on the back in apology.

Lauren went on to say one of the most impressive comments of the casual conversation between the president and students was when President Obama was asked by Lauren's roommate from Phoenix, AZ, if it was daunting to be the most important man in the world. He replied that once it was stated in those terms, he had to point out that he surrounds himself with the smartest people in all areas and delegates responsibilities in order to maintain the position.

Lauren said what she enjoyed most about the trip was, "meeting the delegates from all the different states."

She went on to say, "Students represented different types of values from across the nation. Every time we sat down for a meal the conversation turned to debate." Lauren felt "very much in the minority" with her more conservative views. However, Lauren thoroughly enjoyed this "once-in-a-lifetime opportunity."

Lauren will graduate from Mound City High School in May and plans to attend Kansas State University for her undergraduate education, then return to the University of Missouri to attend the College of Veterinary Medicine.



Craig Principal, Mr. Terry Petersen- Receives his final pie in the face from his son, Josh 'pie-crusher' Petersen. Josh earned his chance by being the high bidder in the silent auction.

Craig school celebrates Pi Day

With a slight twist on words, the Craig students enjoyed watching their principal, Mr. Terry Petersen, pay the price of celebrating Pi Day with pies of whipped cream.

Math teacher, Melanie Brandon, said, "In an effort to promote enthusiasm for math and science, we celebrate Pi Day on March 14." This year, however, that date fell on a Saturday, so students and faculty celebrated on Friday, March 13, instead.

The number Pi in mathematical terms represents the ratio of the distance around a circle (circumference) to the distance across the middle (diameter). Pi has so far proven to be an infinite number, but the most commonly used shortened version for math practice is 3.14. This understanding leads to a celebration on March 14.

This was the second annual celebration for the Craig school, but this year they students also chose to celebrate

with a pie toss.

Chances to throw a pie at Mr. Petersen were won or earned by faculty and students in grades 7-12 and came to a total of 14 pies to be thrown.

A drawing and silent auction were held for each grade and one for the school faculty, leaving two chances within each grade level. The silent auction raised \$122 for the Math and Science club.

Earlier in the day, students in grades 7-12 enjoyed pies made by Dottie Biermann. In order to earn a piece of pie, students had to answer three basic question about Pi.

In the end, Mr. Petersen reaped the rewards of the educational fund raiser as he succumbed to receiving 14 pies in the face.

The last pie of the day was effectively applied by his son, Josh Petersen, history teacher, who was the high bidding faculty member on the silent auction throw.



Groundbreaking for the Holt County Courthouse Annex- Took place on Monday, March 16. Those breaking ceremonial ground are from left to right- Don Holstine, Bill Gordon, Mark Sitherwood, Arnold Kreek, Richard Barrett, Brenda Nelson, Tom Kelso, Karma Metzgar, Wayne Flanary, Karl Noellsch, Pat Walter and Kathy Kunkel.

Groundbreaking held for the courthouse annex

A beautiful morning ushered in the long anticipated day for the groundbreaking ceremony of the Holt County Courthouse Annex. The ceremony was well attended and those present were excited to see the project finally become a reality.

The ceremony began when Mark Sitherwood, Holt County's Presiding Commissioner, welcomed the crowd on behalf of himself, Commissioners Bill Gordon and Don Holstine, County Clerk Kathy Kunkel and Deputy County Clerk Glenda Atkins.

"This is a great day for Holt County and for this community. The efforts that have been made by everyone are greatly appreciated," stated Mark Sitherwood. "We are proud of

what we have done here."

Mark Sitherwood then introduced three individuals who represented the funding resources for the project. The total cost for the project is \$431,718 with Helsel Design and Construction Services from Savannah, MO, getting the bid.

Arnold Kreek, Economic Development Planner for the Northwest Regional Council of Governments, wrote the grant that is funding \$297,000 of the project. "This project makes up 17% of the monies that Missouri had allotted for the entire state. This Community Development Block Grant took a lot of persistence and we are excited to start this project," remarked Arnold Kreek.

Gene Dorrel, general

manager for the United Electric Cooperative, reiterated the group's excitement of getting the project going and the cooperative's pleasure in being a part of it.

USDA-Rural Development Area Director, Neal Miller, addressed the group and thanked the United Electric Cooperative for its work which made this \$172,000 zero percent interest loan to the county possible.

Michael Goldschmidt, University of Missouri project architect, was thanked for \$46,800 of in-kind services.

Karma Metzgar, University of Missouri Extension NW Regional Director, and Brenda Nelson, Holt County Health Department Administrator, expressed

their thanks for the work being done to make this wonderful project a reality.

The county also has \$52,000 of in-kind resources that it will provide by digging the hole for the basement, finishing dirt work, painting, inspection and the drainage grate in the lower driveway.

The county is currently seeking a grant to upgrade the conference facilities for use as an Emergency Operations Center. The county has needed such a facility three times within the past couple years and would greatly benefit from having this resource.

The work will begin on the annex before the first of April with the project completion date to come before the Annual Fall Festival in September.

Mound City NEWS
Established 1879
(USPS 364-920)
511 State St.
PO Box 175
Mound City, MO 64470
(660) 442-5423
Fax (660) 442-5423
email: moundcitynews@socket.net
www.moundcitynews.com

Adam Johnson
Owner/Publisher
Reanon Hale, Advertising
Carrie Wilson, Reporter
Lisa Yocum, Proofreading

Member
Missouri Press
Association



\$30 PER YEAR (Red Dot)
Holt, Nodaway, Andrew,
and Atchison Counties.

\$35 PER YEAR (Blue Dot)
Elsewhere In Missouri and
All Other States.

**A COLORED DOT ON
YOUR MAILING
LABEL MEANS
SUBSCRIPTION
IS DUE;**

PLEASE PAY BY THE 15th.

Published weekly on
Thursdays and entered as
periodical publication on the
Post Office at Mound City,
Missouri 64470.

POSTMASTER:
Send changes of address to:
Mound City News
PO Box 175
Mound City, MO 64470

Copies available each
week at our office
and at: Craig Country
Store; Prop In, Big
Lake; Lake Lovers, Big
Lake; Water's Edge,
Big Lake; Forest City
Diner; Country Corner
and Randy's Market,
Oregon; Sumy Oil,
Skidmore; The Smoke-
house, Graham; Mound
City Foods, Mound
City Shell, Kwik Zone,
George's C-Store in
Mound City.

YOU'RE INVITED

Northwest Health Services
is honored to invite you to join us to
Break Ground for the

New Mound City Clinic!
Monday, March 30, 2009
at 10:00 a.m.

¼ Mile North of I-29 Intersection on US Hwy.
59 • Reception to Follow

Please join us for this Special Event!

Attention: Hunters, Farmers or Investors



Andrew County, MO, Land Auction
Saturday - May 16, 2009, at 10:30 a.m.
Auction will be held in the
Cosby Community Center, Savannah, MO

Featuring 80 acres more or less
Located north of Savannah, MO, on Hwy. 71 to Route Y West to the farm on north side.
80 acres more or less - all in CRP with wonderful wildlife established
Abundance of deer, quail, pheasants, turkeys and much more
Soil types: high yields for crop productions
CRP payments over \$5,000 each year. Buyer will receive this CRP contract which expires Fall 2011.
Owner is sincere in selling and it will make an excellent investment.
Go to our website for all the information.
We have been selling farmland for 55 years and planning on selling this one too. Plan on coming to this one.

Showalter Auction and Realty Co.
Abie & Jonathan Showalter - 660-683-5438
Ronnie Flint - 660-442-5399
E-mail: showalter@asde.net
Fax: 660-683-5648

www.showalterauctions.com



Holt County Historical Society plans for 2009

Holt County Historical Society Board members were guests at the home of Helen "Becky" and Steve Smith, in Maryville, on Wednesday night, March 11, for the regular board meeting.

A potluck supper was enjoyed before the business session. Attending were: Jill Asher, Nancy Nauman, and Charley Smith, Mound City; Ed Woolsey, Forest City; Mike Freeman, Oregon; Kathy Daly, St. Joseph; Mike Girdner, Savannah; Elizabeth Burnside and the hosts, all of Maryville. Erin Slocum, Oregon, was unable to attend.

Recipes for a planned cookbook, "Celebrations in Holt County", are being collected. Later, Mound City news items are being added to the late Erma Hinkle Mound City clippings that were published in the Mound City News during the 150th celebration in 2007, and all are being combined in a booklet. Photos will be added and it will soon be offered for sale by the society.

Nancy Nauman was a guest speaker at an Omega Club program in Mound City recently. She shared the Big Lake History DVD that is offered for sale along with highlights and upcoming plans for the Society.

An "All You Can Eat" biscuit and gravy fundraiser is planned for Saturday, March 21, at the T.J. Hall Building in Oregon with serving beginning at 7:00 a.m.

The Fortescue Church Museum and Research Library will have a Saturday opening day, April 18, 9:00 a.m. until 3:00 p.m.

The regular Wednesday open days will begin April 22, 9:00 a.m. until 3:00 p.m., with volunteers there each

week to assist with research. The building has been closed during the winter months but research queries have been answered.

The first program of 2009 will be at the St. John's Lutheran Church in Corning, at 2:00 p.m., Sunday, March 29. The church was recently placed on the National Register of Historic Places. Nancy Peters is coordinating the afternoon program.

The Confederate Memorial Day observance will be held on Sunday afternoon, April 26, at the Cowan Cemetery at New Point. Those buried there who participated in the Civil War will be recognized along with all other veterans. A history of the cemetery will be shared and several of the pioneers of that area will be recognized.

A "Spring Fling" is being planned for all day on Saturday, May 30, at the society's school grounds. An invitation will be extended to "come over to experience Holt County in the springtime". Various opportunities will be offered to step into the past with living history exhibits, early day crafts, period dances and games, and spend time with a school marm in the little schoolhouse. Anyone is welcome to enjoy the fun time. Admission will be free.

The society will "take to the hills" on Sunday, June 28, at 2:00 p.m., with a program by Jim Pierson, Private Land Conservationist. Beginning at the society's church building in Fortescue, a tour will continue to the bluffs to hear the history of the loess soils and to enjoy the beauty of the many spring flowers and native grasses in that area.

Planning has begun for the 2009, 1861 Battle of Blair Hill Re-enactment, October 17-18. Held on all three society properties, the event recognizes the only Civil War battle fought in Holt County. Activities will include battle re-enactments, a courthouse trial, an evening candlelight tour of a military hospital, concessions, period crafts, and tours of the camp areas. A fund raiser Chicken Dinner will be served at the T.J. Hall Building in Oregon on October 4, with proceeds going to the re-enactment expenses.

Anyone interested is welcome to any of the society programs. There is free admission.

Mound City Kiwanis news

The Mound City Kiwanis Club met at The Klub on Wednesday, March 11, with 13 members and one guest, Sheri Sharp, present.

Larry Thomas presented a program about MoCHIP, the Missouri Child Identification Program. The club will provide volunteer assistance to this program when they come to Mound City this year.

The club officially welcomed new member Sheri Wright.

The Mound City School was happy that the club is adding the Dr. Hugh Wallace scholarship this year.

There was some discussion about recruiting businesses to sponsor the April 18 trap shot.

A card was received from the Senior Citizens of Holt County thanking the club for delivering Meals on Wheels in January.



Motorola w315

FREE

with 2 year primary contract



\$100 Motorola VE20

with 2 year
primary contract



\$50⁺ any Smartphone

\$20 or higher data plan
and contract required

NORTHWEST MISSOURI CELLULAR

660.582.3334
800.331.6341

1218 South Main • Maryville, MO 64468
www.nwmccl.com

Call or Visit any of our
Authorized Agents in:

Albany
One 36 Realty
702 E. Hwy 136
660.726.3631
Owens & Sons
215 W. Clay St.
660.726.4138

Burlington Jct.
IAMO Telephone
122 W. Main St.
660.725.3354
Grant City
Rural Missouri
Insurance
4 W. Fourth St.
660.564.3575

King City
Catherine's Basic Essentials
107 W. Vermont St.
660.535.4470

Mound City
Laukemper Motors
1011 State St.
660.442.5438

Oregon
Oregon Farmers
Mutual Telephone
118 E. Nodaway St.
660.446.3391

Rock Port
Rock Port Telephone
107 W. Opp St.
660.744.5311

Stanberry
McCarthy Farm Loan
136 W. First St.
660.783.2635

Tarkio
Midwest Data Center
521 Main St.
660.736.0000

Some restrictions apply. See store for details.

Obituaries

Cyrus Jones

Cyrus Hubert Jones, 93, of Fairfax, passed away on Thursday, March 12, 2009, at Community Hospital-Fairfax.

Cy was born October 21, 1915, in Nodaway County. His younger years were spent there with the exception of a few years in Barton County. Cy went to work, living on his own at a very early age. He then went to Atchison County in 1935, first working 10 years on Rankin Ranch, then farming around Fairfax, making a home on his farm southwest of Fairfax in 1957.

Cy served on the county F.H.A. Advisory Board, Dale Township Committee, 12 years on the Fairfax School Board and was serving as a director of Colfax Farmers Mutual Insurance.

Cy was a member of the Fairfax United Methodist Church and had served in numerous positions. Cy was a good steward of the land. He took pride in his farmstead and farmed until the age of 85. In his younger years, he won awards in tractor rodeos and enjoyed tractor pulls until his death.

On December 24, 1937, Cy was married to Mable McIntyre of Burlington Junction, MO. They were the parents of three daughters, Barbara, Joyce and Nancy. Mable passed away in 1973.

Cy and Emma (Creed) were married in 1975, and made their home on the farm southwest of Fairfax. They moved into town in 2000.

Cy will be fondly remembered for his enjoyment of taking pictures for Miss Fairfax and Fairfax High School events for over 10 years. Cy attended and took pictures at all school activities, then gave them away, not expecting anything in return. He was honored in having a Fairfax High School annual dedicated to him. In August of 1992, Cy and Emma were chosen to be the parade marshals for the Fairfax Fair.

Cy was preceded in death by his parents, John and Elizabeth (Logan) Jones; five brothers, J. Mervin, Raymond E., Roland D., Harmon, and John B.; two sisters, Ellen Jones and Myrtle Rose; three half-brothers, Richard, Benny and Sheldon; three half-sisters, Roberta, Marilla and Ruth; one stepsister, Ethel; his wife, Mable; and son-in-law, Scott Hawkins.

He is survived by his wife, Emma, of the home; daughters, Barbara (Joe) Meiners, Joyce (John) Pearce and Nancy (Bob) Irvine; stepdaughter, Kay (Clark) Cofer; stepson, Sam (Linda) Creed; and 12 grandchildren, Lora Ceperley, Jeff Pearce, Julie Weiss, J.B. Pearce, Janae Pearce, Keith Hawkins, Matt Hawkins, Brice Hawkins, Mike Creed, Tony Creed, Mark Cofer and Michelle Bliss. He is also survived by 14 great-grandchildren.

Funeral services were held on Saturday, March 14, at the Fairfax United Meth-

odist Church in Fairfax. Interment was made in Pleasant Ridge Cemetery, Fairfax, under the direction of Schooler Funeral Home, Fairfax.

Memorials may be directed to the Fairfax United Methodist Church, Tarkio Nutrition Center or Community Hospital-Fairfax.

George Ott

George T. Ott, 91, passed away Friday, March 13, 2009 at the Oregon Care Center.

George was born in Holt County on August 6, 1917. He was one of 10 children born to John Gottlob and Rosa (Miller) Ott. George farmed, and was a lifetime resident of the county.

On March 12, 1940 he married Helen M. Stull, and they became parents of three children. Helen preceded him in death.

He was also preceded by his parents; son, John Thomas Ott; brothers, Dan, Chester, Frank, and an infant brother, Harold; sisters Minnie Huffman, Emma Jordan, Lossie Coy, Fannie Adams, and an infant sister, Hazel; and one grandson, Brent Christopher Bradley.

He is survived by daughters and sons-in-law, Evelyn and Duane Baker of Oregon, MO and Carolee and Ronald Bradley of St. Joseph, MO; two grandchildren; five step-grandchildren; one great-grandson; seven step great-grandchildren; and numerous nieces and nephews.

Services were held Tuesday at the Chamberlain Funeral Home in Oregon.

Interment was in the Maple Grove Cemetery, Oregon.

Memorials can be directed to Kendallwood Hospice.

Gladys Clifton

Gladys Wanita (Cooper) Clifton passed away early Thursday morning, March 12, 2009, at Tiffany Care Center, Mound City, MO, at the age of 96 years.

She was born April 29, 1912, at Langdon, MO. She was a member of the Rock Port Lutheran Church. On September 2, 1933, Gladys was united in marriage to Gordon O. Clifton.

She loved her family and entertained them for Sunday dinner up to the time of her hip fracture. She was outgoing and never met a stranger; a good neighbor and friend. Her kind and loving ways will be missed by many.

Gladys was preceded in death by her parents, Thomas and Mary (Smith) Cooper; her son, Jan, in 1988; Gordon, her husband of 60 years, in 1993; sisters, Matie Christian, and Hiebe Cooper; and an infant brother.

She is survived by her daughter-in-law, Lois Deatz and husband, Paul, of Mound City; three grandchildren, Michael Clifton and wife, Shirley, of Tarkio, MO, Matthew Clifton and wife, Debi, of Mound City, and Melinda Dudeck and husband, Mark, of Oregon, MO; six great-grandchildren, Brent and Bryce Clifton, Miles and Haylee Clifton, Andrew and Ben Dudeck; nieces, Phyllis Hollister, June Lynn and Lois Herron, all of Rock Port; great nieces and nephews; and many friends.

Services were held Monday, March 16, at the First Lutheran Church in Rock Port, MO.

Memorials may be directed to Kendallwood Hospice, St. Joseph, MO, or the Atchison County Memorial Building Foundation.

Services were under the direction of Minter Funeral Chapel, Rock Port, MO.

Online obituaries and condolences can be placed at www.minterfuneralchapels.com.

Road work scheduled near New Point

The Missouri Department of Transportation announced that roadwork has been scheduled for Route B in Holt County on Friday, March 20 (weather permitting). Area maintenance crews will be making concrete deck repairs. Route B will be closed between MO 120 and the south end of New Point between 8:00 a.m. and 3:00 p.m.

For more information about this or other projects being handled by MoDOT, call the toll-free customer service hotline at: 1-888-ASK-MoDOT (1-888-275-6636).

News from the Mound City Nutrition Site

Volunteers for the week of March 9 were Bill and Donna Golden, Addie Trimmer, Linda Elton, Ruth Lange, Kenneth and Irene Caton, Chris and Linda Boultinghouse, Walter and Pat Groves, Greg Biermann, Jeremy Wittwer, Gordon Robbins, Barb Flint, Michael Quilty, Herb and Mary Ann Beggs, Gene and Bev Miller, Mary Hutcheson, Roma Chaney and Yogi Swymeler.

Delivering meals the week of March 23:

Craig- Monday and Tuesday- Sue Schmidt, Wednesday and Thursday- Herb and Mary Ann Beggs, Friday- First Christian Church, Gene and Bev Miller

Mound City- Monday and Tuesday- Christian Fellowship Church, Wednesday- Yogi Swymeler, Thursday and Friday- First Christian Church

The site recycles cell phones, ink cartridges, newspapers, magazines and aluminum cans for cancer. There is also a drop box available for donations to the food pantry, labels and boxtops for the school. Mound City grocery receipts can be left at the site for each student participating.

March product of the month is paper towels, napkins and copy paper. A drawing will be held March 31.

If you can volunteer preparing or serving cinnamon rolls and donuts, please call Addie Trimmer at 442-5889.

Site Schedule

March 21- Rummage/Bake/Lunch sale- 8:00 a.m. to 2:00 p.m.; the winner of the gun cabinet and electric organ will be announced at 2:00 p.m.

March 23- exercises 8:30- 9:30 a.m.

March 24- Line Dance (free lance)- 2:00 p.m.

March 25- Exercises 8:30-9:30 a.m., "Seven habits for a longer life"- 11:45 a.m.

March 26- Congressman Grave's mobile office- 10:30 a.m., Shirley Erney- 1:30 p.m.

March 27- Cinnamon rolls and donuts- 8:30 a.m.

April 1- "Show and tell" featuring Helen Derr with handmade "Father Christmas" dolls 10:00 a.m.- 1:00 p.m.

April 4- Craft Show 8:30 a.m.- 1:30 p.m., booth space

TOPS news

TOPS Chapter #1163 met Monday at Concordia Lutheran Church.

Twelve members weighed in. The best loser was Rita Drewes.

Linda Stroud gave the program, "Seven diet mistakes."

The next program will be Monday, March 23 at 4:30 p.m.

Mound City

NEWS

Thursday, March 19, 2009 • Page 3

News from Tiffany Heights

Residents enjoyed playing a round of Jeopardy during the afternoon on Monday. They were asked a variety of questions in several different categories. They did not get to the doubles round, but plan to do it again. The winners of the game were Lucyle Benne and Mary Margaret Crain.

Esther Haynes played piano during lunch on Tuesday. During the afternoon, residents enjoyed discussing the up-coming superstitious day of Friday the 13th. They discussed many old wives' tales. These are legends and superstitions handed down for generations. Many of the ones read had not been heard locally, but residents had many of their own to add to the list.

Shirley Jackson, Joan Smith and Angie Binder assisted with a St. Patrick's Day craft. They made lucky shamrock necklaces to wear. They were beautiful green shamrocks with white beads and for good luck they added a gold

bead. Residents enjoyed homemade breads and jellies provided by Shirley.


Bingo volunteers on Thursday were Gail Twyman, Jean McCall, Inez Van Orman, Shirley Jackson, Lucille Stull and Pat Johns.

On March 23, there is a National Day to celebrate chips and dip. Residents celebrated early and enjoyed a variety of chips and dip during the afternoon on Friday. Residents also enjoyed cards, checkers, dominoes and putting a puzzle together.

Larry Brickey and family provided Sunday morning services. Afternoon worship was conducted by the First Christian Church.

Arrest report

Keith E. Bridges, 33, was apprehended on March 13 at 2:00 p.m. in Holt County. He was taken to the Holt County Jail under a warrant from the St. Joseph Police Department for FTA on resisting arrest.

**QUACKERS**
LTD

660-442-5502
Hwy. 59 • Mound City, MO

Friday: Smoked Pork Chops with Scalloped Potatoes

Saturday: Brisket

SPRAY WITH PRECISION

Control your chemical costs with Swath Control Pro™.



Control your booms, control your costs. Growers who use Swath Control Pro and AutoTrac™ save as much as five percent on their input costs. The reason... Swath Control Pro automatically turns sprayer boom sections on and off based upon a coverage map. In other words, product is only applied where it is intended for extremely efficient application.

With chemical costs on the rise, now is the time to introduce Swath Control Pro to your John Deere sprayers. Call or visit us to learn more.

**JOHN DEERE**

HIAWATHA IMPLEMENT CO., INC.

1410 STATE STREET
MOUND CITY, MO 64470
(660) 442-3814

Nothing Runs Like A Deere™

www.JohnDeere.com/Ag

DT181UGL248M4 - 00275613



Your Full-Service Memorialist

Since 1935

- Monuments
- Markers
- Mausoleums
- Plaques
- Lettering
- Cleaning
- Custom Designing

Van Vickle Monuments

1717 Frederick
St. Joseph
Toll Free
1-877-232-5882





It's about **Life.**

Service

Ever hear anyone say they're out to provide just "okay" service? But what's the difference between mediocrity and the very best? We believe it's when you feel like yours is the only family we're here to serve. It's the kind of service you deserve.



Jonathan Miller



Pettijohn & Crawford
Family Funeral Service

1405 Nebraska St. • Mound City
660-442-5425



OREGON CARE CENTER & NORTHWEST HEALTH SERVICES

WELCOME DR. MARIA ESPEJO, MD

2009

JOIN US IN WELCOMING,
Dr. Maria Espejo to the Mound City Clinic and Oregon Care Center! Reception will be held at Oregon Care Center. We hope to see you there!

OPEN HOUSE
March 25th 1:00 pm -3:00 pm

Oregon Care Center, 501 Monroe, Oregon, MO 64473

You Can't Beat The House
A Comedy written by Pat Cook directed by Dan Seitz

March 27 & 28
7:00 PM

\$10 Adult
\$8 Advance Adult
\$5 Student

Tickets available at Nodaway Valley Bank in Mound City, MO or by calling (660) 442-5909

Sponsored by State Theater Arts Council & Missouri Arts Council

MAC
MISSOURI ARTS COUNCIL

Cora Belle Yount turns 90

Cora Belle Yount of Mound City will celebrate her 90th birthday, March 22 at a reception hosted by her children at the Mound City United Methodist Church from 2:00 to 4:00 p.m.

Cora Belle was born March 18, 1919, in Craig. She and her late husband, Burdette, were married in 1941 and lived most of the time in St. Joseph. He passed away in 1982.

They had four children, Jim (Cindy) Yount, Janie (Dan) Rivera of St. Joseph, Jerry (Jean) Yount of Stewartsville, MO, and Judy (John) Hood of Forest City, MO. There are six grandchildren and 12 great-grandchildren.

Cards may be sent to 801 Evans Circle Dr., Apt. 8, Mound City, MO 64470.

News from the Keenagers Club

The Keenager's Club of Maitland met March 16 at the Senior Center there.

Five regular members were in attendance with three guests attending.

A delicious fried chicken dinner was served to the club members.

After the meal, two tables of pinochle were played. High score was won by guest, Brenda Long with second high going to Eileen Wyman. Other guests were Evelyn Haeffele, Mound City and Diane Smock, Maitland.

The next meeting will be April 6 with Esther Haynes, Mound City serving as hostess.



Historical commemoration for St. John's Lutheran Church to be held

The members of St. John's Lutheran Church in Corning, MO are inviting those in surrounding communities to a Historical Commemoration.

This event will be held Sunday, March 29 at 2:00 p.m. at the church in Corning. This is a celebration in honor of St. John's Church and St. John's Parochial School being named to the National Register of Historic Places.

The first settlers arrived in upper Holt County in the early 1840s. Their religion and the education of their children was of utmost importance to them.

Thus Sankt Johannes Kirche (called the Church in the Timber) and the parochial school were started at Hemme's Landing, southwest of the present day Corning.

As that area was slowly eroded away by the Missouri River, the church was moved to Corning in 1885. The old church building was used as the school after the brick sanctuary was built in 1893. The present schoolhouse was built in 1912.

St. John's presence and influence was crucial in shaping the lives of the people in this community.



Holt County Clerk Kathy Kunkel- Stopped by the office of U.S. Congressman Sam Graves in Washington, D.C., while meeting with legislation on economic recovery for counties.

Nation's counties working toward economic recovery

Holt County Clerk Kathy J. Kunkel attended the National Association of Counties (NACo) Legislative Conference in Washington, D.C., last week.

"Faced with a tough economic outlook, small counties must stand above the crowd to be competitive for federal stimulus dollars and grant programs," Mrs. Kunkel said.

"Through this conference, I was uniquely able to speak directly with the people in the Capitol who make decisions on federal spending. This gave me an opportunity to share with them the challenges we face in rural America, while reaching out for contacts and seeking funding for projects that impact the people at home."

Mrs. Kunkel joined 2,000 county officials from across the country to hear remarks from four U.S. cabinet secretaries and several Congressional leaders and lawmakers on Capitol Hill. One of the main objectives of the Legislative Conference was to bring county and federal government officials together to discuss key priorities and specific legislation, regulations and funding levels affecting local government services and programs.

"Many counties across the country are struggling to maintain the level of services and programs their residents have come to expect," said NACo President Don Stapley, Supervisor, Maricopa County, Ariz.

"In these tough economic times county officials need to communicate directly to the administration and Congress regarding our needs and challenges. The NACo

Legislative Conference in Washington, D.C. afforded me and 2,000 NACo members that opportunity," said Mrs. Kunkel.

The economy and the recently-enacted economic stimulus package were the main themes of the conference. County priority provisions contained in the stimulus package included \$1 billion for the Community Development Block Grants (CDBG), \$2 billion for the Neighborhood Stabilization Program (NSP), \$2.25 billion for HOME Investment Partnerships, \$2.8 billion for Energy Efficiency and Conservation Block Grant (EE-CBG) and other programs as well.

Featured guest speakers at the conference included U.S. Department of Homeland Security Secretary Janet Napolitano, U.S. Department of Housing and Urban Development Secretary Shaun Donovan, U.S. Department of Energy Secretary Steven Chu, U.S. Department of Interior Secretary Ken Salazar, White House Senior Advisor to the President for Intergovernmental Relations Valerie Jarrett, and NBC News Chief White House Correspondent Chuck Todd.

Mrs. Kunkel met with Under-Secretary of Agriculture Bill Hagey to discuss Rural Development grant and loan programs for Holt County. Following the conference, she met with Sixth District Congressman Sam Graves to work on Payment In Lieu of Tax funding for US Army CORPS of Engineers land acquisitions in Holt County through the Missouri River Restoration Plan.

Graves praises funding that will benefit hospital

U.S. Congressman Sam Graves praised funding designated for Fairfax in the Omnibus Appropriations Bill passed by Congress. Graves was able to help secure \$381,000 in funding for the new hospital's construction.

"Community Hospital-Fairfax is an integral part of care in northwest Missouri," said Graves. "This funding will ensure quality medical care for another generation."

The current hospital was built in 1949 and is a not for profit critical access hospital. The hospital is the primary healthcare provider

for Atchison and Holt counties. It receives no funding from taxes and is supported through community gifting and paid medical services.

"This is great news for Fairfax and the region," said Nancy Hurst, a member of the hospital's Investing in Our Healthy Future Capital Campaign Steering Committee. "This funding simply would not have happened without Sam Graves and I am thankful that he worked so hard to make this a reality."

The funding still must be approved by the President. He is expected to sign the bill.

Church Services

GRAHAM

Graham Union Church
Sunday School, 9:30 a.m.
Morning Worship, 10:30 a.m.
Evening Service, 6:30 p.m.
Wednesday night, 7 p.m.

United Methodist Church
Connie Ury, Pastor
Sunday School 9 a.m.
Worship 10:15 a.m.

MAITLAND

First Christian Church
4th and Ash
Bill Gazaway, Pastor
Sunday School, 9:15 a.m.
Worship service, 10 a.m.
Sunday Night Worship, 7 p.m.
Wednesdays: Youth Rallies, 7 p.m.

United Methodist Church
217 S. Maple Ave.
Connie Ury, Pastor
Worship Service, 9 a.m.

SKIDMORE

St. Oswald's-in-the-Fields Episcopal Church
30996 X Avenue
Skidmore, MO

2nd Sundays - 11 a.m., Morning Prayer service by Lay Reader
4th Sundays - 11 a.m., Eucharist Service

FILLMORE

The Lighthouse
Exit 65 on I-29
Pastors Tim and Faith Uzzle
Sunday morning worship: 10 a.m.
Thursday Bible Study: 7 p.m.
www.fillmorelight-housechurch.org

BIG LAKE

Big Lake Baptist Church
213 Lake Shore Dr.
Karl Forehand, Pastor
Breakfast 9 a.m.
Sunday School 9:30 a.m.
Worship 10:30 a.m.

MOUND CITY

Community of Christ
1410 Nebraska St.
Theresa Mackey, Pastor
H 660-446-2048
Sunday School 10 a.m.
Worship Service 11 a.m.
Our mission "We proclaim Jesus Christ and promote communities of Joy, Hope Love, and Peace"

Concordia Lutheran Church
1413 Nebraska St.
442-3414
Pastor W.J. Lowmaster
9:00 a.m. Holy communion
10:15 a.m. Bible Class
12:00 p.m. Potluck Dinner
Wed. 9 a.m. T-P Ladies Bible Study(P)
Wed. 7:30 p.m. T-P Lenten Service (J)
Thurs. 7 p.m. Home Bible Study

Mound City Baptist Church
1308 Savannah
Pastor Virgil Evans
Morning Worship, 9 a.m.
Sunday School, 10:15 a.m.
Wednesday Bible Study, Larry Brickey, 6:30 p.m.; SI@m City Youth Group, 6:30 p.m.
816-718-9462.

Mound City United Methodist Church
312 E. 7th St.
Pastor Crystal Karr
Sunday School 9 a.m.
Sunday Service 10 a.m.

Benton Church
An 1880s Church in the 21st Century
Pastor: Jim Broker
1/2 mile south of Eagle's Nest
Truck stop on Hwy. BB
CLOSED FOR WINTER!

OREGON

New Point Christian Church
24135 Stone Hill Rd.
Sunday School, 9:30 a.m.
Worship, 10:30 a.m.
Fellowship Dinner, 4th
Sunday of month following church

Christian Fellowship
18080 Hwy. 59
Jim Brown, Minister
Sunday School, 9:30 a.m.
Worship, 10:30 a.m.
Senior High Youth 7:00 p.m.
www.christian-fellowship.net

First Christian Church
402 E. 5th
Paul Grant, Pastor
Sunday School, 9:30 a.m.
Worship, 10:30 a.m.

First United Presbyterian Church
307 East 6th Street
Pastor, Robert Hoenike
Sunday School, 9:45 a.m.
Worship, 11 a.m.

New Liberty Baptist Church
County Road 140
Dr. Everett Walden, Pastor
Sunday School, 9:45 a.m.
Worship, 10:30 a.m.

New Life Apostolic Assembly U.P.C.I.
307 E. 6th, Mound City
Pastor Scott Jordan
660-442-3441
Currently meeting in the First United Presbyterian Church
Sunday School, 2 p.m.
Worship Service 3 p.m.



Oregon Church of the Nazarene
207 W. George
Rob Self, Pastor
Sunday School, 8 a.m.
Worship Service, 9 a.m.

St. Patrick's Catholic Church
303 Grand, Forest City
Father Peter Ullrich, OSB
Pastor and Parish Administrator

CRAIG

St. Peter Lutheran Church
15371 Amber Dr.
Pastor W.J. Lowmaster
"Services held at St. John's"
9:30 a.m. Bible Class
10:30 a.m. Divine Worship (J)
Wed. 9 a.m. T-P Ladies Bible Study
Wed. 10:15 a.m. Quilting Bee
Wed. 6:00 p.m. T-P Midweek (J)
Wed. 7:30 p.m. Lenten Service (J)

Craig Presbyterian Church
Rev. Lee Felsburg, Pastor
Worship Service 9:15 a.m.
Congregational Meeting March 29

Sharp's Grove United Methodist Church
Rev. Crystal Karr
4-1/2 mi. north of Craig, just off Rt. 59
Worship Service 8:45 a.m.

Craig Community Church of the Nazarene
105 S. Ensworth St.
Sunday School 10 a.m.
Worship Service 11 a.m.
Wednesday Night Bible Study, 7 p.m.

Church of God
Sunday School 10:00 a.m.
Worship 11:00 a.m.

CORNING

St. John Lutheran Church
112 Waters Street
442-3414
Pastor W.J. Lowmaster
9:30 a.m. Bible Class
10:30 a.m. Divine Worship
Wed. 9 a.m. Ladies Bible Study (P)
Wed. 6:00 p.m. T-P Midweek
Wed. 7:30 p.m. T-P Lenten Service

REGIONAL

River of Hope Fellowship
304 East 4th St., Mound City
442-6305
Pastor David Showalter
Sunday School, 9:15 a.m.
Worship, 10:30 a.m.

Are modern nations in Bible prophecy?
New World Order, Armageddon
The Four Horsemen of the Apocalypse
Holy Roman Empire, the Antichrist, and the False Prophet
Mark of the Beast
World Government, Cashless Society
The Kingdom of God, the Rapture

Perhaps you have heard these terms and wondered what they are. Maybe you have questions concerning what is going on in the world today. If you have questions about what the Bible says concerning the last days, we invite you to join us for a study on endtime events. For the next several weeks, we will be showing a 10-part video series on Bible prophecy presented by Irvin Baxter, who has studied prophecy for many years. These exciting lessons will be presented free of charge.

Please join us at
New Life Apostolic Assembly, 307 E. 6th Street,
beginning this Friday, March 20th at 7:00 p.m.
For more information please call 442-3441.



Spring temperature hits early
Spring officially starts Friday, March 20.- The temperature on the Nodaway Valley Bank sign hit 84 on Tuesday, March 17. The great St. Patrick's Day weather was a hit.

Scholarship to benefit students in journalism

Current and prospective students in journalism are eligible to apply for a \$500 scholarship to be awarded this spring by the Northwest Missouri Press Association.

The deadline for receipt of applications for the Marilyn Farmer Memorial Journalism Scholarship is April 24. Interested students, including both graduating high school seniors and current college students, may obtain an application form from any of the participating newspapers in the 19-county region served by the press association.

The application form asks for information about the student's education; information about any writing done for a school or college newspaper, yearbook or other publication; and a short essay about why the student is pursuing a career in journalism. The

form also requests that a teacher evaluate the student's potential as a journalist.

William W. Farmer, the former publisher of the Atchison County Mail in Rock Port, made the initial gift in 2002 to establish the scholarship fund in memory of his late wife, Marilyn. The press association has added to the fund and sponsors the scholarship program to help journalism students and to further the practice of professional journalism in Northwest Missouri.

To obtain an application form, contact a Northwest Missouri Press Association member newspaper. Interested students, parents or teachers also may contact W.C. Farmer, Publisher, Atchison County Mail, P.O. Box 40, Rock Port, MO 64482, phone (660) 744-6245, fax (660) 744-2645 or e-mail at amail@rpt.coop.

Wine grape management meeting

Iowa State University (ISU) Extension in Page County and Joe and Shelly Skahill, owners of Wabash Wine Company, are offering a chance for vineyard managers to sharpen their skills. The Pruning and Pest Management meeting will be held on April 4 from 8:30 a.m. (registration) to noon at the Coin Community Center and Wabash Wine Company. The Coin Community Center is at 506 Depot St. in Coin, Iowa.

Mike White, ISU Extension Viticulture Specialist, will be the featured speaker. White will discuss pruning winegrape vines and pest

management in vineyards, especially weed control, from 9:00 to 10:40 a.m. At 10:45 a.m., the audience will carpool to Wabash Wine Company and participate in a demonstration on pruning winegrape vines.

The cost for the Pruning and Pest Management meeting is \$15, which includes handouts and refreshments. Pre-registration is required by March 31. For more information and to pre-register, call ISU Extension in Page County at 712-542-5171 or toll free at 877-596-7243 or e-mail Corrinna Bix at bix@iastate.edu.



Mound City Area Weather

SEVEN-DAY FORECAST FOR MOUND CITY

THURSDAY
62°
36°
Mostly sunny

FRIDAY
60°
42°
Windy with times of clouds and sun

SATURDAY
59°
46°
Mostly cloudy and breezy

SUNDAY
67°
48°
Windy with a thunderstorm possible

MONDAY
67°
43°
Clouds and sun, t-storms possible

TUESDAY
61°
35°
Mostly cloudy and windy

WEDNESDAY
57°
29°
Partly sunny, a shower in the p.m.

WEEKLY ALMANAC

St. Joseph through Tuesday, March 17

TEMPERATURE

Last week's high/low 81°/13°
Normal high/low 54°/31°
Average temperature 40.4°

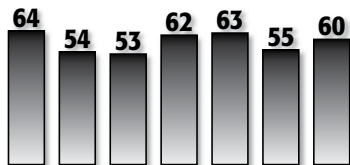
PRECIPITATION

Total for the week 0.00"
Total for the month 1.37"
Total for the year 1.99"

SNOWFALL

Total for the week 0.0"
Total for the month 0.0"
Total for the season 11.7"

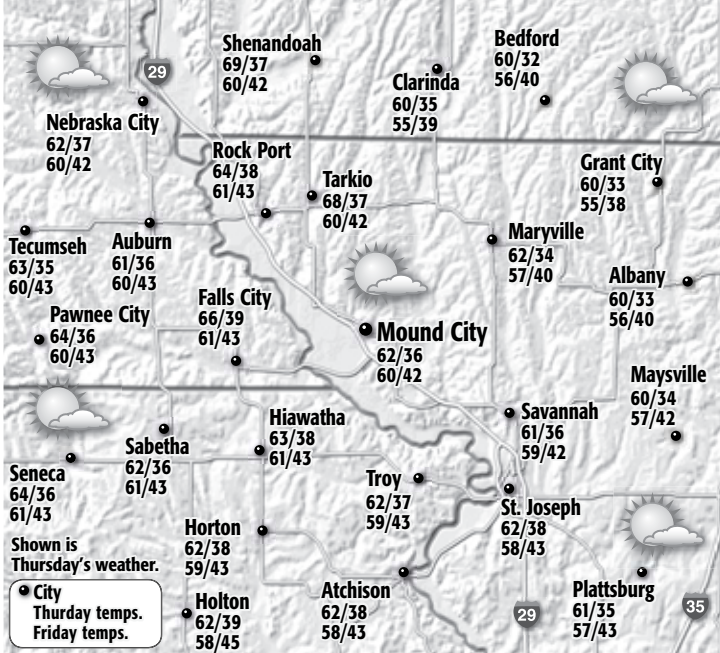
REAL FEEL TEMPERATURE



Thur. Fri. Sat. Sun. Mon. Tues. Wed.
The patented **AccuWeather.com RealFeel Temperature** is an exclusive index of the effects of temperature, wind, humidity, sunshine intensity, cloudiness, precipitation, pressure and elevation on the human body. Shown are the highest values for each day.

Forecasts and graphics provided by **AccuWeather, Inc.** ©2009

REGIONAL FORECAST



WEATHER HISTORY

A heavy, wet snowstorm began in the mid-Atlantic region on March 19, 1958. By the time it ended, over 18 inches of snow had accumulated from northern Virginia to Massachusetts.

WEATHER TRIVIA™

Q: Where do the vertical rays of the sun shift just after spring begins?

A: Into the Northern Hemisphere.

Weather forecast brought to you by these sponsors

Yocum Service, Inc.
Mound City • 442-3879

Yocum Terminal
Bigelow • 442-3893

NORTHWEST FERTILIZER

John Ingram
• 660-442-3352
Jeff Ingram
• 660-442-5189
301 W. Second St. • Mound City, MO
660-442-3163

Rosier Pioneer Warehouse

Mound City, MO
(660) 442-5372



Golden Triangle Energy



Craig, MO • 660-683-5646

Scientific testing can provide good data for growers

The one time result that may be obtained from a product test in a crop field may not reflect the long-term value of the product.

There are a large number of products on the market that are available to use to protect crops and increase yields. Producers should be sure their on-farm results match up with research. If they do not match, they should identify why the results are different.

University research data is generated over multiple locations and over multiple years. Data is taken and analyzed which gives an important perspective of how well a product performs in different yield environments, application timings, pest levels and many other conditions depending on the use of the product.

The use of statistics to correctly analyze randomized and replicated plots insures that the data obtained is valid. All new products in the research and development process were evaluated by companies in small replicated

plots just like the University's. Often growers are concerned about small plots, but this is where all products start in the company research and development process.

The ability for a product to perform consistently to increase yields or protect crops from pests over time is a measure of value to the local grower. Products that are inconsistent or do not have a particular set of circumstances that can be used to control pests or increase yields are not recommended by Extension Service.

Research and testing provides a foundation for product selection for crop growing. The use of appropriate products to ensure high yielding crops plays an important role in keeping local agriculture strong.

For more information, contact Wayne Flanary at 660-446-3724 or Heather Benedict at 660-425-6434, University of Missouri Extension Regional Agronomists.



National Ag Week -
March 15-21, 2009
Special Section on
pages 6-9

Duck Inn Cafe



Down Home Cooking

Bakery & Coffee Bar • 115 S. Main St. • Craig, MO
660-683-5444
Mon-Fri 6:30 a.m. - 3 p.m. - Sat 8 a.m. - 1 p.m.

next to Wright Hardware and inside the old Schooler building



WHAT DO CATHOLICS BELIEVE?

Catholics believe God created the universe and made human beings "in His image and likeness". When humanity separated itself from God by sin, God joined us to Himself again by the life, death and resurrection of Jesus Christ.

Catholics believe Jesus remains in our world, gives us new life through the sacraments, teaches us through Scripture and Sacred Tradition, and guides us by Providence toward our final goal of everlasting happiness in heaven.

The Missouri Knights of Columbus invite you to learn more about the Catholic Faith through a FREE correspondence course. There is no charge, no obligation, and no one will call. Simply complete and mail the form below, or

Enroll Online: www.amm.org/chss.htm



KNIGHTS OF COLUMBUS
RELIGIOUS INFORMATION BUREAU
PO BOX 363
PERRYVILLE, MO 63775-0363

Please send me the following course (Check only one)

- ☐ We Believe- Basics of Catholic Belief
☐ We Pray - A "How to Pray" Guide for Everyone
☐ We Worship - A Guide to Catholic Mass and Holy Communion
☐ The Search for Happiness- Jesus teaches us how to be truly happy
☐ A Catholic Guide to the Bible- A study of God's Word

(Please Print)

NAME (circle one)

Mr. Mrs. Miss Ms. _____

ADDRESS _____

CITY _____ STATE _____ ZIP _____

April Specialty Clinics

Cardiac Clinic: April 7, 28-Dr. Coatsworth
April. 14, 21-Dr. Whitney

Vascular Clinic: April 7, 14, 21, 28

ECHO Clinic: April 7, 14, 21, 28

Nuclear Medicine: April 14, 28

Pulmonology Clinic: April 13-Dr. Keim

Eye Surgery: April 27-Dr. Madson

Eye Clinic: April 28-Dr. Madson

Neurology Clinic: April 22-Dr. Makos

Urology Clinic: April 8, 23-Dr. Partamian
Prostate Screening April 23

Surgery: April 1, 15-Dr. Ryberg

Oncology April 3-Dr. Weigand

Orthopedic Clinic: April 7-Dr. Bredthauer
April 13-Dr. Mizera

OB/GYN Clinic: No scheduled clinic for April

Cardiac Rehab: Tuesdays at Community Hospital-Fairfax

Sleep Study: Available Tuesday nights with appointments-#260

Wellness Program: Monday, Wednesday & Friday-Appt. #262

Bone Densitometry Clinic: April 7
Evening Mammos: April 16 and daytime appointments

Diabetes Education: Karen Wedlock-April 22, 23
Holt Co. Outpatient Services, 660-442-5134

Nutritional Counseling: April 1, 8, 15, 22, 29
Kay Wing, R.D.L.D., CDE,
660-686-2211 ext. 266

Home Health Services: Nursing & Physical/Occupational/
Speech Therapies

Blood Pressure Clinics: April 9-Rock Port
April 16-Tarkio
April 22-Mound City

660-686-2211 • www.FairfaxMed.com



Missouri’s farmers recognized during National Ag Week

With more than 105,000 farms spread over 31 million acres, agriculture continues to be the leading economic driver in Missouri’s economy. This week, the Missouri Department of Agriculture is celebrating National Agriculture Week, March 15-21, 2009 - an annual event honoring the hard work, sacrifice and achievements of farmers and producers across the state.

“Missouri cannot move forward unless agriculture moves forward,” said Gov. Jay Nixon. “National Agriculture Week is one way we can show our appreciation to local family farmers in this state and the great work they do.”

Agriculture’s impact on the state economy is difficult to overstate. Missouri’s crops, livestock, processing and other agricultural sectors accounted for more than \$12 billion in 2008 employing more than 245,500 workers in the industry (according to the Missouri Economic Research and Information Center, 2008).

“Missouri agriculture is in a position to capitalize on unprecedented breakthroughs in genetics, alternative energy and other technological innovations,” said Dr. Jon Hagler, director of the Department of Agriculture. “The Department is ready to lead the way in the transition to a new economy.”

National Agriculture Day is organized by the Agriculture Council of America - a nonprofit organization composed of leaders in the agricultural, food and fiber community, dedicating its efforts to increasing the public’s awareness of agriculture’s role in modern society.

Mound City Feed & Grain

313 State St.
Mound City, MO
660-442-3525
or 660-442-3124



Proudly Supporting Our Area
Farmers During National Ag Week



Proudly Supporting Our Area Farmers During National Ag Week

CUNNINGHAM FARMS

Doing Business as: Craig Grain and Craig Supply

AUCTION

38817 Eagle Rd.
GRAHAM, MO.

1 mile West of Graham or 1 mile East of Maitland, Mo. on A Blacktop and South 3 miles on Eagle Rd. From Fillmore, MO.: North on H Blacktop 4 miles to Y, 6 miles West & North on Y Blacktop, then West on 395th St. 2.5 miles.

SATURDAY
MAR. 28

10:00 A.M. 2009



TRACTORS: 1978 John Deere 4640, Power Shift, 5321 hrs., 3 hyd., 20.8-38 axle mt. duals, rubber in excellent condition, SN 003197.
1980 John Deere 4240, Quad Range, 6576 hrs., 3 hyd., Long axle, 18.4-38 rubber, SN 019412.
1974 John Deere 4030 w/Roll Guard canopy, 7125 hrs. 2 hyd., quad range.
Accessories: 3 quick hitches; Front wts., 18.4-38 axle mt. duals and clamps, cylinders, etc.

TRUCKS, AUTOS, 4-WHEELER: 1974 Chevy C-65 10-Wheeler, 1 owner, 51,686 miles, hyd. tandem axle, twin hoist, 18' Knapheide bed, 366 engine overhauled last year, working 5-spd., tarp, always shedded.
1972 Chevy C-50, tag axle, 69,403 1 owner miles, 15' bed w/high sides, 350 engine, 4x2 trans., tarp.
2000 Jeep Grand Cherokee Laredo, 4x4, 134,000 miles, leather with all the options.
1983 Chevy S-10 pickup, 2x4, V6, auto., 110,000 miles, air, long box with alum. camper shell.
1989 Polaris 250 Trail Boss, 2x4. 12V Poly Sprayer.

EQUIPMENT: JD 7200 Max Emerge 2 6-row planter, vacuum, trash whips, and monitor; JD 8300 16-hole grain drill w/grass seed boxes, double V openers, rubber press wheels & hyd. markers; Demco 45' 3-pt. sprayer w/(2) 150-gal. saddle tanks, hyd. level, elect. shut-off & regulator, foam marker & hyd. pump; Brent 420 grain cart w/extensions & new auger; Model 750 Soilmover (7½ yds.); Degelman 10' dozer blade for tractor; Krause 1900 20' tandem disc; White 588 plow, 6-bottom, 18" or 20" adjustable, trash coulters; AC Mono Frame 4x16" semi-mounted plow; Case V-Ripper (7-30" or 11-20"); 2 yr. old Mayrath 60"x10" auger w/swing hopper & hyd. lift; My-D-Handy 53"x8" auger w/new screw; Versatile 60"x71½" auger; 41"x6" auger w/gas motor & cleaning screen; 18"x5" auger w/elect. motor; 200-bu. gravity wagon w/hydro-fold bean auger (heavy gears); JD 653A row crop combine head (good), SN 526481; JD 653 head for parts; AC white top round baler (good); JD 350 9' sickle mower; Barge wagon w/hoist; Flatbed wagon; Running gear; 4-section harrow; 2 JD RG 630 cultivators; 2 spring shank cultivators; JD 3-pt. 6-row rotary hoe; Dearborn 2-row cultivator; Pull-type loder sprayer w/roller pump; 12-row 3-pt. spray booms; 1200-gal. poly water tank; Recirculating sprayer; 3-pt. track remover.

BOAT MOTORS, SNOWMOBILE, AND MISC: Mercury 25-hp boat motor w/elect. start (used very little); Older Scott 25-hp boat motor; 1972 Artic Cat Panther snowmobile w/399 engine; 24' snowmobile trailer, 3-axle; New set double axles for horse trailer (complete w/springs & wheels); Iron wheel metal gear wagon; Van cargo box; 8 Pipe farrowing crates; Big roll triplex overhead alum. wire; (2) 13.6x24 used tires; Other good used tires; Radial arm saw; Older portable air compressor; Bubble tire balancer; Digital grain tester; Pile of welding iron; 4-6"x20" steel pipe; Century 350-amp welder; 8 Spools new barbed wire; Approx 100 good steel posts; Fence braces; PTO wire winder; Hog panels; 3-pt. hyd. log splitter; 3-pt. boom lift; 300-gal. gas barrel & stand; LP gas delivery tank; Bin aeration tubes; 5th wheel for semi; Many other misc. items.

HOUSEHOLD AND COLLECTIBLES: Hay fork; Cross cut saw; 2 Post drills, hand operated & with belt; 16 Padded cafeteria chairs; Singer cabinet sewing machine; Hide-a-bed couch; Baby bed; Toaster oven; Mr. Coffee; Boom box; Printer; Small elect. keyboard; Easy chair; Humidifier; Alum. kitchen table & 3 chairs; Console CD-tape-record player; Deep fryer; Hot plate; Glassware; Child's rocker; Thermos; Toaster; Chandelier light; 12V coffee pot; Coolers; Picnic basket; AB Lounge exerciser; Wagon wheel clothes rack.



AUCTIONEER NOTE: If you are in need of some good clean quality equipment plan on being with us sale day. Equipment shedded except one or two small pieces. Start on household and sell tractors approx 12:00. For more pictures go to www.colbill.com.

MAX AKIN, 660-939-4263

LUNCH SERVED

Brookshier & White
Auction Service

BILL BROOKSHIER, Graham, Mo.
660-939-4177 • Cell 660-582-1245

JOHN WHITE, Hopkins, Mo.
660-778-3293 • Cell 660-562-9657

Clerks: JEANETTE BROOKSHIER & MADELINE BUTZER • For info and more pictures: www.colbill.com

TERMS: Cash or good check day of auction. Announcements made day of Auction take precedence over all advertisements.

National
AGRICULTURE
WEEK

National Ag
Week -
March 15-21,
2009

Agricultural talking points

advances.

- U.S. farmers and ranchers produce more than 200 raw commodities yearly for domestic and export markets.
- In 1999, one farmer produced enough food to feed about 144 people each day.
- Agriculture generates 20% of the U.S. Gross Domestic Product.
- One-fourth of the world's beef and nearly one-fifth of the world's grain, milk, and eggs are produced in the U.S.
- The United States exports \$43.5 billion in agriculture products and imports \$26.4 billion in farm products, equaling a positive net trade balance of \$17.1 billion.
- One in three U.S. farm acres is planted for export, and 25 percent of gross farm income comes directly from exports.
- Through research and changes in production practices, today's food producers are providing Americans with the widest variety of foods ever.
- Research and advancements in biotechnology are now in the marketplace with tastier fruits and vegetables that stay fresh longer and are not damaged by insects.
- Consumers gain health benefits from changes in farm production including less fat in meat and longer lasting fresh fruits and vegetables. As well, tofu, a soybean product, has been shown to reduce the risk of some cancer and heart disease.
- For every hour, the U.S. exports \$6 million worth of agricultural products.

Technology Leads The Way In Today's Agricultural Production

- Precision farming boosts crop yields and reduces waste by using satellite maps and computers to match seed, fertilizer and crop protection applications to local soil conditions.
- Sophisticated Global Positioning Systems can be specifically designed for spraying herbicides and pesticides. A weed detector equipped with infrared light identifies specific plants by the different rates of light they reflect and then sends a signal to a pump to spray a preset amount of herbicide onto the weed.
- Biogenetics is another technology that is being utilized in crop production. A particular trait is implanted directly into the seed to protect the seed against certain pests.
- Artificial insemination of livestock is producing more and better meat supplies.
- Farmers are utilizing 4-wheel drive tractors with up to 300 horsepower requiring fewer passes across fields - saving energy and time.
- Huge combines are speeding up the time it takes to harvest crops.
- With modern methods, one acre of land in the U.S. (about the size of a football field) can produce: 42,000 pounds of strawberries, 11,000 heads of lettuce, 25,400 pounds of potatoes, 8,900 pounds of sweet corn, or 640 pounds of cotton lint.

America Is Producing Not Only More Food, But Higher Quality And Lower Cost

- Two out of every three bushels of corn in the world originate in the United States.
- In 2001, 45% of the world's soybeans were grown in the United States.
- American consumers spend the lowest percentage of their annual income on food - just 9.3 percent.
- Cotton is by the far the most dominant fiber produced in the United States and is used for apparel and home fabrics, as well as industrial uses.

Fertilizers And Pesticides Contribute To Increases In Production

- Crop protection products have tripled the output of resource-intensive food, like cooking oil, meat, fruits and vegetables.
- Crop protection products have doubled the production of world food calories since 1960.
- Without synthetic crop production chemicals, American farmers cannot feed the world.

Farmers Are Good Stewards Of The Land And Environment

- Farmers and ranchers are the first environmentalists, maintaining and improving the soil and natural resources to pass on to future generations.
- Farmers use reduced tillage practices on more than 72 million acres to prevent erosion.
- Farmers maintain over 1.3 million acres of grass waterways, allowing water to flow naturally from crops without eroding soil.
- Contour farming, planting crops on hillsides instead of up and down, keeps soil from washing away. About 26 million acres in the United States are managed this way.
- Cattle ranchers and others control water run-off with sod waterways and diversions, erosion control structures and catch basins.
- Just as urban families recycle glass, newspaper, and aluminum, farm families have practiced recycling for a long time by applying manure to fields to replace nutrients in the soil.
- Food service food scraps are used to make animal feed.
- Agricultural land provides habitat for 75 percent of the nation's wildlife.

John Callow Agency



Proud Supporter
of National
Ag Week

John A. Callow - Jeannie Miller

Phone: 660-446-3417 • Fax: 660-446-3409

PO Box 76 • Oregon, MO • 64473

Proudly Supporting Our Area Farmers
During National Ag Week



YOCUM SERVICES, INC.

203 E 2nd St. • Mound City, MO • (660) 442-3879

All-American Farms

National Ag Week - March 15-21, 2009

National Ag Day facts

What Is Ag Day?

It's a day to recognize and celebrate the abundance provided by agriculture. Every year producers, agricultural associations, corporations, universities, government agencies and countless others across America join together to recognize the contributions of agriculture.

When Is Ag Day?

Ag Day is celebrated on March 20, 2009, the first day of spring. National Ag Day falls during National Ag Week, March 15-21, 2009.

Who Hosts Ag Day?

The Agriculture Council of America hosts the campaign on a national level. However, the awareness ef-

forts in communities across America are as influential - if not more - than the broad-scale effort. Again this year, the Ag Day Planning Guide has been created to help communities and organizations more effectively host Ag Day events.

What is Ag Day All About?

Ag Day is about recognizing - and celebrating - the contribution of agriculture in our everyday lives. The National Ag Day program encourages every American to:

- Understand how food and fiber products are produced.
- Value the essential role of agriculture in maintaining a strong economy.

• Appreciate the role agriculture plays in providing safe, abundant, and affordable products.

Why Celebrate Agriculture?

Agriculture provides almost everything we eat, use, and wear on a daily basis. Too few people truly understand this contribution. This is particularly the case in our schools, where students may only be exposed to agriculture if they enroll in related vocational training. By building awareness, the Agriculture Council of America is encouraging young people to consider career opportunities in agriculture. Each American farmer feeds more than 144 people, a

dramatic increase from 25 people in the 1960s. Quite simply, American Agriculture is doing more and doing it better. As the world population soars, there is an even greater demand for the food and fiber produced in the United States.

Every week is Ag Week

This week marks the 36th anniversary of National Ag Week, a nationwide effort to recognize agriculture's contribution to the every day lives of Americans. In Missouri, the state's commodity groups are working to ensure this key message is extended beyond March 15-21.

Thirteen of Missouri's agriculture organizations are once again teaming up to educate elected officials and local leaders on the importance of agriculture to Missouri's economy through the popular Lunch & Learn Series. Now entering its third season, the program is designed to broaden agriculture awareness and education in communities across the state.

"National Ag Week provides a great opportunity to highlight the success of the agriculture industry," said John Kleiboeker, Missouri Beef Industry Council executive director. "But this message needs to be shared year round. Agriculture revitalizes our rural communities and infuses dollars in the state's economy. By conveying this message through these Lunch &

Learn events, our leaders can see firsthand how valuable the industry is to Missouri's communities."

Agriculture is the number one economic driver in Missouri, generating \$6.2 billion in cash receipts from the sale of agricultural products in 2007. The industry also provides significant funding through income and property taxes. In 2005, animal agriculture producers alone paid more than \$240 million in income taxes and \$79 million in property taxes. The tax revenue from these facilities helps fund roads, schools and libraries.

"Without fail, America's farmers are working hard every day to help feed and fuel the world," said Becky Frankenbach, Missouri Corn Merchandising Council Director of Communications. "And this message starts here at home. These Lunch & Learn events provide local leaders the chance to talk directly with farmers to gain a better understanding of the challenges and opportunities facing Missouri's grain and livestock industries. We hope they walk away with a greater

appreciation of agriculture and the contributions it makes to our rural communities."

Last year, the coalition hosted 20 successful events at different farms across the state. Partners in the 2009 Lunch and Learn Series included the Missouri Agribusiness Association, Missouri Beef Industry Council, Missouri Cattlemen's Association, Missouri Corn Merchandising Council, Missouri Dairy Association, Midwest Dairy Association, Missouri Department of Agriculture, The Missouri Egg Council, Missouri Farm Bureau, Missouri Pork Association, The Poultry Federation, Missouri Soybean Merchandising Council and the University of Missouri Extension Commercial Agriculture Program.

For more information and upcoming Lunch & Learn events, visit www.lunchlearn.com. For more information on National Ag Week, visit www.agday.org.





Answers & Low Prices Down Every AisleSM



**National
Ag Week**
March 15-21,
2009

402-245-4588
65273 706 Rd. (East Highway 159), Falls City, NE

National Ag Week • March 15-21, 2009



Holt County Farm Bureau

Becky Livengood, Agent • 660-446-2310

We Salute All The Farmers During National Ag Week



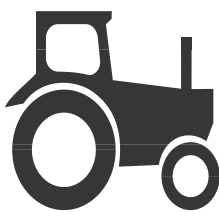
**Golden Triangle
Energy**

www.goldentriangleenergy.com
For Market News & Bids

15053 Hwy. 111 • Craig, MO • 1-888-220-5646

FARM & CITY SUPPLY

2618 Harlan • Falls City, NE • 1-800-362-2749



*Great selection of sprayer parts, hoses
and pumps for spraying*

**Proudly Supporting
our local
farmers during
National Ag Week**



THANK YOU.



We appreciate loyalty, so now with qualified purchases* we're offering exclusive deals just for you. Get \$500 off choice Select Series[™] lawn tractors, Z-Trak[™] Estate mowers and Gator[™] utility vehicles and \$1,000 off select Compact Utility Tractors. It's our way of saying thank you for your business.

UP TO \$1000 OFF



JOHN DEERE

VISIT US AT WWW.JOHNDEERE.COM

HIAWATHA IMPLEMENT CO., INC.

1410 STATE STREET
MOUND CITY, MO 64470
(660) 442-3814

jddealer.deere.com/hiawatha

*Qualified purchases include new agricultural/commercial worksite products with a retail value greater than \$10,000; a 3000 TWENTY or 4000 TWENTY Compact Utility Tractor; an HPX or XUV Gator utility vehicle; a Select Series X500 or X700 tractor; or a Z-Trak Estate mower. Discount offers for subsequent purchase are valid from November 1, 2008, to October 30, 2009, and are good on prior purchases within the last 12 months. Both purchases need not be made at the same time. Prices and model availability may vary by dealer. Some restrictions apply. See your dealer for details. Available at participating dealers. John Deere's green and yellow color scheme, the leaping deer symbol and JOHN DEERE are trademarks of Deere & Company.

023B085910-00275172

**Proud
supporters of
National Ag
Week
March 15 - 21**



FT

Trailer Manufacturing
660-744-2300

1003 S Main, Rock Port, MO 64482 www.fischertharp.com
Utilities, Carhauleders, Equipment, Deckovers, Refueling

AGChoice



*Call us for the best
prices on all your farm
chemical, seed &
fertilizer needs!*
**A salute to our entire
farming industry
during National Ag Week.**

105 E. US Hwy. 136
Rock Port, MO
660-744-6289

Annie's Project: Farm Management Workshop for women

University of Missouri Extension is offering an evening and an afternoon farm management workshop, Annie's Project, in Rock Port. The course is targeted towards farm women, women landowners, and new farmers. The course includes six sessions to start Monday, April 13, and continue every Monday evening through May 18. The workshop will be held from 6:00-9:00 p.m. at the Atchison County Extension Center.

A few of the course topics include: communication, business plans, financial statements, retirement, risk management, computer software tools and much more. The course will be taught by University of Missouri Extension field faculty and will also include guest speakers.

Annie's Project began in Illinois. Annie was a farm wife who grew up in Northern Illinois. She married a farmer and spent her life-

time learning how to be an involved business partner with her husband. Together they did great things, but it was not easy. This course- Annie's Project- takes her experiences and shares them with farm women living and working in a complex business. The course has already been taught at numerous locations in Illinois, Iowa, and Missouri. Several additional land grant universities are in the planning stages to offer the course.

The fee for the course is \$50. The class is being partially funded by a grant through the North Central Risk Management Educational Center. With the software, resources and materials that each participant receives, the value of the course exceeds \$300 per person.

For more information or a registration brochure please contact Randa Doty at the Nodaway County Extension Center, (660) 582-8101, by April 8.



Careers in agriculture

The most obvious careers are directly related to the farm or ranch, but did you know that only 10 percent of Americans are involved in traditional farming? If that is the case, then what other careers comprise the agricultural field? There are approximately 22 million people who work in agriculture related fields. Unlike agriculture in our grandparents' day, today's agriculture offers over 200 rewarding and challenging careers.

Agricultural careers may be divided into various categories. These include: Agribusiness Management; Agricultural and Natural Resources Communications;

Agriscience; Resource Development and Management; Parks, Recreation, and Tourism Resources; Packaging; Horticulture; Forestry; Food Science; and Fisheries/Wildlife.

Agribusiness Management

- Focuses on the managerial functions performed by organizations throughout the food system. Sample job titles include: commodity trader, agricultural production specialist, purchasing manager, financial manager, farm owner and manager, and wholesale/retail buyer manufacturing manager. Companies that hire for these positions include: Seneca Food Corporation, Ralston Purina Co., Farm Bureau Mutual Insurance, Archer-Daniels-Midland Co., and Dow Elanco.

Agricultural and Natural Resources Communications

- Focuses on careers in journalism, public relations, and advertising/marketing. Sample job titles include: marketing communications manager, district sales representatives, advertising manager, reporter, editor, and account manager. Companies that hire for these positions: Upjohn Co., USDA, Milk Producers Associations, National Dairy Council, and Farm Bureaus.

Building Construction Management

- Focuses on land development and structural buildings. Sample job titles include: Project manager, estimator, construction scheduler, controller, purchasing agent, site manager, field engineer, land developer, and real estate appraiser. Companies that hire for these positions include: Turner Construction Company, Pulte Homes, Perini Building Co., and General Motors Corporation.

Agriscience

- Provides a foundation for careers in agricultural and natural resources industries. Sample job titles include: agriscience educator, extension

educator, farmer, and human resource director. Companies that hire for these positions include: Crop Production Services, John Deere, and Gerber Co.

Resource Development and Management

- Focuses on policy analysis, planning, evaluation, budgeting, and program management. Sample job titles include: environmental analyst, environmental planner, solid waste coordinator, water resource specialist, and economic development specialist. Companies that hire for these positions include: Cooperative Extension Service, River Watersheds, The National Park Service, Enviroscope, Senate and House policy offices, lobbying organizations, banking organizations, city and state governments, and hospitals.

Parks, Recreation, and Tourism Resources

- Focuses on planning and managing programs, areas, and facilities that are designed to meet people's leisure needs and enhance quality of life. Sample job titles include: park ranger, interpreter/naturalist, environmental educator, travel and convention planner, youth program director, camp counselor, park and recreation director, and tourism consultant. Companies that hire for these positions include: Hilton and Marriott Resorts, hospitals, YMCA, golf courses, Six Flags Great Adventure, and the Walt Disney Company.

Packaging

- Focusing on food packaging, healthcare, and pharmaceutical packaging, and industrial packaging. Sample job titles include: packaging engineer, quality control coordinator, laboratory manager, and package designer. Companies that hire for these positions include: Coca-Cola Co., Hershey Chocolate USA, Johnson and Johnson, 3M, IBM Corp., and Amway Corp.

Horticulture

- Focuses on the science and art concerned with cul-

ture, marketing and utilization of high value, intensively cultivated fruits, flowers, vegetables, and ornamental plants. Sample job titles include: retail manager, landscape designer, entrepreneur, florist, contractor, nursery grower, and nursery stock buyer. Companies that hire for these positions include: Gerber, Mawby Fruit Farms, Ball Corporation, and Pan American Seed.

Forestry

- Focuses on the science and art of managing natural resources that occur on forest lands. Sample job titles include forester, forest ranger, consulting forester, district ranger, arborist, naturalist, timber buyer, and forest nursery manager. Companies that hire for these positions include the Mead Corporation, John Hancock Financial Services, city governments, and USDA Forest Service.

Food Science

- Focuses on the development of new foods, investigation of new production and processing methods, and research ways to ensure a safe, nutritious and economical food supply. Sample job titles include: food technician, laboratory technician, food chemist and quality control manager. Companies that hire for these positions include: Pepsicola, Kraft/General Foods, Hygrade Food Products, Kellogg Company, General Mills, Pillsbury, and Heinz USA.

Fisheries and Wildlife

- Focuses on environmental management, conservation, and wildlife ecology and management. Sample job titles include: land management specialist, water quality specialist, habitat specialist, and fish hatchery manager. Companies that hire for these positions: US Forest Service, Bureau of Land Management, state and local divisions of surface water quality, land and water management, and US Fish and Wildlife services.

Grant opportunities for energy audits

USDA Agriculture Secretary Tom Vilsack announced that the department is accepting funding applications from eligible entities for grants to conduct energy audits under the Rural Energy for America Program (REAP).

"For the first time ever, USDA will make grant funding available this year through the Rural Energy for America Program to help agricultural producers and rural small businesses obtain audits to identify ways to improve energy efficiency," Vilsack said. "The assistance provided by this program is in keeping with President Obama's energy conservation goals for our nation." The program is authorized in Section 9007 of the 2008 Farm Bill.

The audits are intended to help rural small businesses and agricultural producers determine where to make changes in their operations to enable them to reduce en-

ergy consumption. Audits are required for energy efficiency projects funded through REAP that exceed \$50,000. States, tribal and local governments, land grant colleges or universities, other institutions of higher learning, and electric cooperatives and public power entities are eligible to receive funds to conduct the audits. Parties seeking audits from the grantees must pay 25 percent of audit costs. The maximum grant award is \$100,000.

Funds can be used for expenses directly related to providing energy audits and renewable energy development assistance including salaries, travel expenses, marketing and/or outreach activities, office supplies and equipment, plus some administrative expenses. Project costs must be related to assistance provided to agricultural producers and small businesses located in

rural areas.

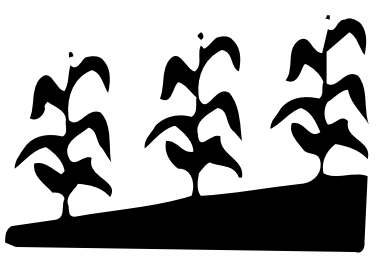
Applications for grants must be completed and submitted on paper or electronically no later than June 9, 2009, to the Missouri State Office, 601 Business Loop 70 West, Suite 235, Columbia, Missouri 65203.

For detailed eligibility information, application instructions and competitive evaluation criteria, please refer to the Notice of Solicitation of Applications (NOSA) published in the Federal Register on Wednesday, March 11, 2009 (vol. 74, no. 46) or visit the link to the NOSA: <http://edocket.access.gpo.gov/2009/pdf/E9-5154.pdf> Questions can be directed to Matt Moore at 573-876-0995 or matt.moore@mo.usda.gov.


USDA Rural Development intends to publish and seek public comment on a proposed regulation for the REAP program later this year.

National Ag Week

March 15 - 21



Rosier Pioneer Warehouse

 (660) 442-5372 • Mound City, MO

Michael Long Construction

- Ponds
- Waterways
- Terraces
- Clearing
- Landscaping
- Drainage Ditching
- Bobcat Service
- Snow Removal

Dozing and Excavation
Fully Insured

Mound City, MO
Soil Contractor/Welding and Fab.

816-262-7335
660-442-4074

13+ Years Experience Serving All Areas





Northwest Fertilizer

301 W. 2nd St. • Mound City, MO • (660) 442-3163
John Ingram ~ Jeff Ingram

PUBLIC AUCTION

MAX KURTZ & RICHARD HARRIS FAMILY ~ OREGON, MO
SATURDAY, MARCH 28, 2009 ~ 10:00 a.m.
LOCATION ~ 100 S. Main in Oregon, MO

FURNITURE <ul style="list-style-type: none">• Dining Room Table w/6 chairs• Hutch• China Cabinet• Book Shelves• Stands• Divan• Hide-a-bed Divan• Several Occasional Chairs• Bunk Beds• Bedroom Suite, King Bed, Dresser, Chest, 2 Night Stands• Desks• Office Chair• File Cabinet• Computer Tables• TVs• Entertainment Centers• Tables-Drop Leaf, End, Coffee, Card• Whirlpool Dryer• GE Washer (near new)• Two Chest Freezers• Older Philco Refrigerator	ANTIQUES <ul style="list-style-type: none">• Tables-Small Oval, Drum, 8' Dining• Bed Frame• Dresser• Stand• Metal Churn• Baby Buggy• Dishes-Germany, Depression, Pressed • Glass etc.• Tools• Single Trees etc.• Mobil Oil, Delco Batteries Signs MISCELLANEOUS <ul style="list-style-type: none">• Elina Sewing Machine• Quilt Hoops• Linens• Dishes• Kitchen Equipment• Silverware• Set of Baroque Stoneware Dishes• Teddy Bears & Furniture• Figurines• Baskets	<ul style="list-style-type: none">• Pictures• Books• Jewelry• High Chair• Shelves• Tread Mill• Weider Weight Machine• Pellet Stove• Wheelbarrow• Air Compressor• Toro Leaf Blower• Tractor Chains VANS <ul style="list-style-type: none">• 1989 Dodge Van, 7 Passenger• V-8, Auto, Full Power• 1989 Dodge Caravan V-6 BOATS <ul style="list-style-type: none">• 1973 18' Tri-Hull Imp In-Outboard w/188 Mercury Cruiser, 302 Ford Engine w/Tandem Axle Trailer• 15' Bass Boat & Trailer• 8' Plastic 2 Man Bass Boat <p>Many More Items.</p>
--	--	--

Max Kurtz and Richard Harris Family- 660-491-2681
Terms ~ Please register w/proper ID prior to bidding. Cash, check w/picture ID. Nothing removed until settled for. Not responsible for theft, accident or inadvertent errors in advertising. Statements made day of sale take precedence over printed material. Lunch Served.

CLAY AUCTION & REALTY

Professional Licensed Auctioneer Since 1974
Col. Loren Clay ~ Broker/Auctioneer - 816-390-2334
Col. Jeremy Clay ~ Auctioneer/Sales - 816-294-7080

FSB

Farmers State Bank

1015 State St.
Mound City
660-442-5487

303 S. 2nd St.
Maitland
660-935-2202



 www.fscbank.com 

Telephone Banking (Toll Free)
1-877-632-5858
Internet Banking
www.fscbank.com

All-American Farms

National Ag Week - March 15-21, 2009

Mound City
NEWS



Thursday, March 19, 2009 • Page 9

Holt County Soil and Water Conservation District election to be held Tuesday, March 31

The Holt County Soil and Water Conservation District (SWCD) will hold a supervisor's election Tuesday, March 31, to elect two supervisors to fill positions expiring in March. Polling will be at the USDA Service Center, SWCD Office at 118 W. Davis St., Mound City, from 7:30 a.m. to 3:30 p.m.

Incumbent Wayne Heck, Mound City, will run unopposed for Area I (Lincoln, Liberty & Union Townships). Incumbent B.J. Bailey, Oregon, will run unopposed for Area III (Forest, Forbes & Lewis Townships).

The Holt County Soil and Water Conservation District is governed by a board of supervisors comprised of five members. Four members are elected to a four-year term. The fifth member is appointed by the University of Missouri Extension. Each of the elected board members represents a different area of the county: Area I: Lincoln, Union and Liberty, Area II: Clay, Hickory and Nodaway, Area III: Forest, Lewis and Forbes, Area IV: Bigelow, Minton and Benton.

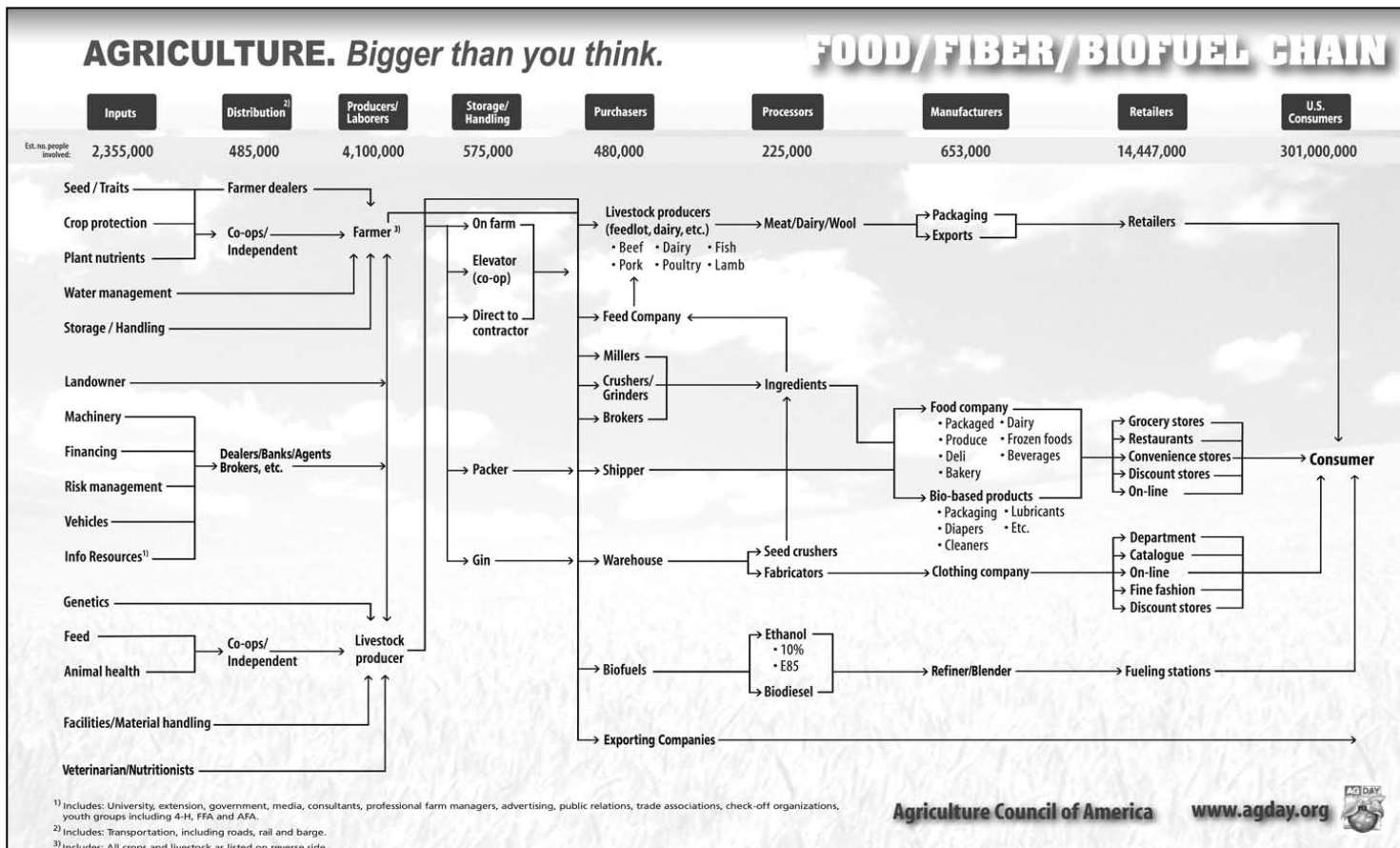
Current board members are Bruce Biermann, Chairman, Area IV, whose term expires in March, 2011, Mark Dudeck, Vice-Chairman, Area II, whose term expires in March, 2011, Wayne

Heck, Treasurer, B.J. Bailey, Member, and Wayne Flannery, Secretary, University of Missouri Extension.

The SWCD relies on volunteer landowner participation to achieve its goal of conserving soil and water resources. Supervisor responsibilities include assessing the district's needs, prioritizing goals, establishing district policies and procedures, managing personnel and finances and administering the state Cost-Share Assistance Program. Supervisors are required to attend monthly board meetings.

All land representatives of any farm lying within Holt County are eligible to vote. A land representative is the owner or representative authorized by power-of-attorney of any farm lying within any area of the district, provided however, that the land representative is a taxpayer of the county. All land representatives so designated by power-of-attorney must present their power-of-attorney form, properly signed, to the polling judges at the time of voting.

For additional information regarding the election, please contact District Program Specialist II, Regina Young at 660-442-3173, Ext. 3.



Agriculture: Celebrating its horsepower

From a team of horses in the early 1900s to tractors with the power of 40 to 300 horses today, American farmers provide consumers with more and better quality food than ever before. The efficiency of American farmers pays off in the price American consumers pay for food as well. U.S. consumers spend roughly nine percent of their income on food compared with 11 percent in the United Kingdom, 17 percent in Japan, 27 percent in South Africa, and 53 percent in India. This great value is due in large part to improved equipment efficiency, enhanced crop and livestock genetics through biotechnology and conventional breeding, and advances in information management.

All Americans are asked to enjoy and admire the wonders of American agriculture as National Agriculture Day is

celebrated on March 20.

Equipment Changes Boost Farm Output

Today's farmers work nearly three-and-one-half times more land than their predecessors from 1900. Their needs are different, the crops are different and the rules governing production practices are different.

"There is an on-going consolidation in agriculture that results in fewer farmers farming more acres," says Doug DeVries, Sr. Vice-President in Agricultural Marketing for North America, Australia and Asia at John Deere in Moline, IL. "Their needs for equipment are changing. Their expectations for what the equipment will do for their farming operation are also changing."

DeVries adds that John Deere has had three of its largest product introductions ever

in the last four years - despite tough economic times. "We've almost revamped our entire product line to provide more efficient production solutions for farmers," he says. "When we sell a planter, we're really selling the ability to plant a crop. Farmers want solutions in the form of bigger, faster equipment that provides them with better information about their farming operations."

Information Management Aids in Food Safety, Production Efficiency

John Deere also provides technology services to farmers that include wireless information transfer and satellite guidance systems for driving equipment. With JD Link™, farmers can have information about their equipment and production operations transferred directly from the equipment in the field to a website for easy access later. This can greatly improve their efficiency

and increase the life of their equipment by ensuring more timely maintenance.



Agriculture Drives Our Local Economy

Hurst's Service

100 East Nodaway • Oregon, MO • 660-446-2244

Our Farmers Feed The Nation

Cargill, Inc.

1-800-396-8844 • 26949 Holt 290 Road • Forest City, MO • (660) 446-3311

Assistance available for Missourians interested in agritourism

Agritourism has become an ever-growing segment of Missouri's agriculture industry and an important component to farms across the state. Agritourism opportunities offers producers a chance to add value and income to their farms while providing Missourians a chance to experience agriculture through pumpkin patches, u-pick strawberries, blackberries, blueberries, apple and peach orchards, on-farm tours and corn mazes. The Missouri Department of Agriculture's AgriMissouri program offers marketing assistance and opportunities to those food manufacturers, farmers, producers, agritourism businesses and farmers' markets that are interested in adding value to their existing operations or beginning a new venture.

"Agritourism businesses con-

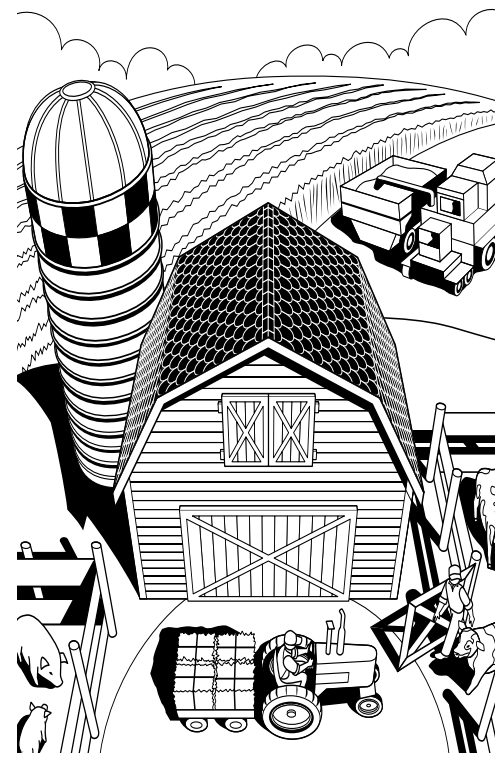
tinue to provide Missouri families and visitors to our state with a multitude of affordable and educational day trips or weekend adventures. Agritourism is a benefit to farmers and also to communities across the state," said Dr. Jon Hagler, director of the Department of Agriculture. "As part of our AgriMissouri program, the Department of Agriculture is helping Missouri farmers add revenue to their farms and provides them the tools needed to succeed in agritourism."

Since 1985, the AgriMissouri program has assisted members in marketing their agritourism locations and Missouri-made products. Assisting start-up entrepreneurs is but one facet of the AgriMissouri program. Other areas include a membership program where members are listed in the online Buyers'

Guide located at www.agrimissouri.com. The Buyers' Guide provides members an opportunity to describe their product or company, list retail locations or hours of operation and include photos of their company or product. Another business tool, the Agritourism Map, provides an online reference to agritourism locations across the state. In 2008, over 10,000 Agritourism Maps were distributed to consumers across Missouri.

AgriMissouri memberships are available to all Missouri agritourism farms or agribusinesses. The annual membership fee is \$50 and includes a business listing on the Agritourism Map. The 2009 deadline to be listed on the map is March 27. To learn more about AgriMissouri or agritourism, contact Sarah Gehring at (573) 522-9213 or visit www.agrimissouri.com.

A proud supporter of National Ag Week and the area farming families



A Salute To Agriculture

Their contributions are sizeable, boosting our economy and lifestyle as well. It's a privilege to salute our American farmers, whose efforts and advancements in agriculture provide us with the food we eat, the clothes we wear, and so much more. For their hard work and dedication we say, "thanks", and proudly show our support by being of financial service to our local farming community.

NATIONAL AGRICULTURE WEEK



NODAWAY VALLEY BANK

the right bank™

Maryville
660-562-3232

Mound City
660-442-3131

Savannah
816-324-3158

St. Joseph
816-364-5678

We Salute All Farmers During National Ag Week



Hiawatha Implement Co., Inc.

1410 State Street • Mound City, MO

(660) 442-3814

Toll Free: 888-742-3814

jddealer.deere.com/hiawatha





Trudy Heitman- Gets a good taste of the seniors’ pressure defense as Cody Tubbs, Caleb Wright and Adam Thomas close in for a steal.

Craig Senior/Faculty basketball game brought fun and fundraising

The Craig senior class took on faculty and board members for a fun night of basketball and fundraising, Friday, March 13.

To start the evening, the senior class held a spaghetti supper as a fundraiser for their senior trip. The entertainment following supper was a 40-minute basketball game between select faculty and board members and the senior class.

The seniors worked hard and had fun, but were un-

able to pull off a win as the faculty pulled ahead 45-41 in the final plays.

The faculty showed a possible advantage by switching out the players every few minutes to increase stamina and they played surprisingly hard. They may have also seen some advantages from referee, Brian Sollars.

Mr. Petersen added that it was important that “no faculty or board members were injured during this game.”

Congratulations



MC Panther Basketball Team
and
“Coach of the Year” - Korey Miles
What a great season! We are proud!
Dad & Mom
(Gary & Cheryl)

Chill out
with a free movie.



Buy a 32-oz. soft drink or Sweet Tea for
\$1 and get a one-night Redbox™ DVD rental **FREE.**



i'm lovin' it®

Limited Time offer. Participation and duration may vary. Applicable only to 32-oz. size (large).
Ounces refer to average content filled. A la carte purchases only. © 2009 McDonald's®

Spring interpretive programs to start at the refuge

Squaw Creek National Wildlife Refuge is starting the spring interpretive program schedule this weekend, March 21.

Interpretive programs will be held at 1:30 p.m. on Saturdays and Sundays from March 21 through May 10. In addition to the interpretive program, the refuge headquarters will be open from 10:00 a.m. to 4:00 p.m. from March 21 through May 10.

Squaw Creek holds several special events each year that offer opportunities for the public to participate in outdoor recreation and volunteering. Below is a complete list of activities and programs coming up for the Spring of 2009.

Volunteer workdays

March 21- Volunteer Habitat Restoration Workday 9:00 a.m.-4:00 p.m.

April 4- Volunteer Habitat Restoration Workday 9:00 a.m.-4:00 p.m.

April 25- 22nd Biannual Volunteer Workday 9:00 a.m.-4:00 p.m.

May 2- Volunteer Habitat Restoration Workday 9:00 a.m.-4:00 p.m.

Volunteers are to meet at the refuge headquarters. Lunch will be provided and some projects are weather dependent.

Interpretive Programs

March 21- Waterfowl Identification, 1:30 p.m.

Location: Refuge Headquarters Auditorium

For help identifying ducks, join a Squaw Creek NWR intern for a program and refuge tour while learning how many ducks migrate through Squaw Creek NWR.

March 22- Geo Catching Photos, 1:30 p.m.

Location: Refuge Headquarters Auditorium

Join a refuge naturalist for program on how a GPS unit

how seasonal waters affect the secretive critters in the mud.

April 11- Who You Callin’ Turkey?, 1:30 p.m.

Location: Refuge Headquarters Auditorium

Join a Squaw Creek NWR intern for a program and hike for a look at where wild turkeys live by exploring the loess hills.

April 12- Refuge Bike Hike, 1:30 p.m.

Location: Refuge Headquarters Parking lot

Travel the Refuge Tour Loop and wetlands on your own bicycle discovering Nature’s little adventures along the way with a Squaw Creek NWR naturalist for an exciting behind the seen tour of the wetlands.

April 18- Wonders in the Tall Grass Prairie, 1:30 p.m.

Location: Eagle Pool Observation Tower (see March 28)

April 19- Mushroom Hunting, 1:00 p.m.

Location: Refuge Headquarters Auditorium

Learn to identify edible mushrooms in Missouri by joining a Squaw Creek NWR intern for a program and hike looking for mushrooms on the refuge.

April 22- Refuge Bike Hike, 1:30 p.m.

Location: Refuge Headquarters Parking lot (see April 12)

April 26- Mushroom Hunting, 1:00 p.m.

Location: Refuge Headquarters Auditorium (see April 19)

May 2- Frogs Frogs Frogs, 1:30 p.m.

Location: Outdoor Classroom

Learn how many kinds

of frogs live on the refuge and explore where frogs call home during a marsh tour. Then get froggy with wet-land games.

May 3- Woodland Wild Flower, 1:30 p.m.

Location: Refuge Headquarters Auditorium

Learn to identify common wildflowers in Missouri by joining a Squaw Creek NWR intern for a program and hike looking for wild flow-ers in the forests on Squaw Creek NWR.

May 9- Birding Squaw Creek, 10:30 a.m.

Location: Refuge Headquarters Auditorium

Join author Karen Glines and artist Billy O’Donnell for a presentation on the in-dividual experiences while working on the book Paint-ing Missouri.

May 10- Shore Birds and Moist Soil at Squaw Creek NWR, 1:30 a.m.

Location: Refuge Headquarters Auditorium

Join a Squaw Creek NWR Naturalist for a program and refuge hike looking at shorebirds and refuge wet-lands.

For more information on spring programs visit the ref-uge website at: <http://www.fws.gov/midwest/squaw-creek/Spring2009> Programs or call Squaw Creek Refuge at (660) 442-3187.

Mound City third quarter honor roll

High Honor Roll

Seventh Grade- Lily Grant, Inessa Hood, Merkin Karr, Jacob Meyer and Thomas Shifflett

Eighth Grade- Haylee Clifton, Chelsea Killin, Paige Kunkel, Kelton Kurtz, Carina Metzgar, Devin Nauman, Alexandra Phillips and Elijah Poe

Freshmen- Jeff Atkins, Josie Bomar, Paul Grant, Tori Ingram, Zach Kahle, Ben Luna, Jordyn Pankau, Katie Portman and Taylor Miles

Sophomores- Prent Eaton, Tiffany Kunkel, Alana Poe, James Schoonover, Jeffrey Skeen, Taylor Blevins, Kyler VanSchoiack, Samantha DeVoght, Seth Henson and Emilee Messer

Juniors- Morgan Burge, Ryan Crowley, Shelby Culp, Sarah Kahle, Dan Montgomery, Gage Rosier, Laura Schoonover, Willy Walker,

Sophomores- Miles Jumps, Cheyenne Martin, Ethan Miller, Montana Schawang, Zach Gilland, Jessica Gillen-water and Amber Robbins

Juniors- J.D. Forehand, Katie Kinney, Hailea Miller, and Jacob Rogers

Seniors- Katie Bowness, Jenny Jackson, Andrew Lehmer, Brittany Moyers, Willie Ritchie, Josh Russell and Rebecca Salinas

Craig Third Quarter Honor Roll

The Craig R-III Honor Roll has been released for the third quarter.

High Honor Roll

Seventh Grade- Kelly Dougherty

Freshman- Thauan Andrade, Holly Howard, Allyssa Kling, Rachel Lewis, Kelsie Sipes

Sophomore- Trevor Drewes, Nathan Hinrichs, Tannah Rails, Alex Rowland

Junior- Kevin Dodson, Garrett Hinrichs, Nicolette Rogers, Jordan Showalter

Senior- Deanna Biermann, Melanie Freeman, Cody Tubbs, April Voltmer, Caleb Wright

Regular Honor Roll

Seventh Grade- Kathy Howard, Bethany Lund-blade

Eighth Grade- Wyatt Drewes, Brook Voltmer

Freshman- Jordan Stoner

Sophomore- Amber Nowling, Jodie Sollars

Junior- Kayla Trauernicht

Senior- Billy Brandon, Will Haer, Stephen Long

Chamberlain
Funeral Home & Monuments
1705 Ridge Drive
Mound City, MO
442-5300

CRAIG
COMMUNITY
CALENDAR

(ITEMS MUST BE AT THE MOUND CITY NEWS BY NOON MONDAY)

Mar. 19 - District Business Contests at NWMSU

Mar. 20 - Science Olympiad at NWMSU - 7:30 a.m. - 3:00 p.m.

Mar. 23 - County Government Day in Oregon - 9:00 a.m.

Mar. 24 - 275 Conference Spelling Bee (Home) - 4:00 p.m.

Mar. 28 - District Band Contest in St. Joseph, MO

Mar. 28 - Craig Junior/Senior Prom

See Us For All Your Banking Needs

• FREE Checking • FREE Internet Banking

• NOW Accounts • Savings Accounts • CD’S

• LOANS At Competitive Rates for Homes, Cars, Etc.



Citizens Bank & Trust

P.O. Box 70
Rock Port, MO 64482
660-744-5333

P.O. Box 38
Craig, MO 64437
660-683-5333

Member FDIC

702 State St.
Mound City, MO 64470 660-442-3800



2009 NHS Inductees- Are from left to right, front row- Shelby Culp, Taylor Blevins, Alana Poe; back row- Tiffany Kunkel, Emily Messer, Morgan Burge and James Schoonover.

Mound City National Honor Society inducts new members

The Mound City National Honor Society held its annual induction ceremony for new members on Thursday, March 12, at the Christian Fellowship Church in Mound City.

Family members joined the new inductees and current members for dinner. Society members and their families were treated to a banquet meal. FCCLA and the Food and Nutrition class prepared the meal and members served it. Paul Grant, Tori Ingram, Jenna Kinney, Taylor Miles and Trevor Tobin-Boyd worked as waiters for the banquet.

Kallie Schoonover, president, welcomed everyone and gave a brief history of the Mound City chapter. She told those in attendance that this was the fifth year for the Mound City Chapter to be affiliated with the national organization and that it was organized under Tamara Stadter and Jason Eggers in May of 2005 with nine charter members. She also gave a brief review of the year's activities.

The students have held two blood drives, cleaned up at the rodeo grounds last summer, cleaned the State Theater after events, and numerous other small projects in the community.

Current members then gave short speeches about each of the four traits, charging the new inductees to follow these traits and to set a good example for others. Hannah Elton was selected to speak on scholarship, Blaire Heck spoke on service, Kallie Schoonover elaborated on leadership and Jacob Parker talked about character. These speeches will be featured in future Prowler articles for all to read.

Eight new members were inducted into the organization. They were juniors- Morgan Burge and Shelby Culp, sophomores- Taylor Blevins, Seth Henson, Tiffany Kunkel, Emilee Messer, Alana Poe and James Schoonover.

The new inductees join current members: seniors- Kelsey Davis, Hannah Elton, Lauren Geiger, Blaire Heck, Synthia Murphy, Jacob Parker, Kallie Schoonover and juniors- Sarah Kahle, Laura Schoonover, Willy Walker and Loni Jo Weber.

The new inductees then signed the society register



Jacob Parker- Looks to score on this jumper in the quarterfinal game.



Miles Clifton- Skies to the basket on this fast break layup in the quarterfinal game with Newtown-Harris.



Patrick Treece- Led the Panthers in scoring despite tough opposition like this during the quarterfinal game.



Attacking the Newtown-Harris defense- Gage Rosier brings the ball up the floor for the Panthers.

Mound City boys' basketball season ends

The Mound City Panthers finished their basketball season Saturday in Maryville in quarterfinal play. The Panthers needed to beat the Newtown-Harris Tigers to give them a chance at the state title in Columbia. The Panthers fell short of their dream, despite a valiant effort.

The Panthers and Tigers struggled to get many points on the board early and Mound City saw a 3-2 lead with 3:52 on the clock in the first quarter. Their aggressive play kept the Tigers from gaining their usual momentum. The Pan-

thers took a 10-6 lead on a layup from Patrick Treece with 1:22 left on the first quarter clock. The score by the end of the first period was tied at 10-10.

The Panthers led by as much as five in the second quarter, before the Tigers tied the score at 17 midway through the second quarter. Buckets from Jacob Parker, Miles Clifton, James Schoonover and Gage Rosier took the Panthers into the half with a 25-22 lead.

The Panthers maintained their aggressive play throughout the first

portion of the third quarter, before Newtown-Harris ignited and went on a scoring run. With the score tied at 32 with 2:29 left in the quarter, the Tigers dropped in 12 unanswered points to take a 44-32 lead over Mound City at the end of the third quarter.

Jacob Parker started the final period with a jumper that brought the score within ten, but the Tigers responded with two threes that gave them a 16 point lead and a momentum shift that kept them out in front the remainder of the game. The Panthers lost with a final score of 41-62.

The Panther scoring was led by Patrick Treece with 12 points. Pat also led the Panthers with seven rebounds and had two assists

and a steal. Miles Clifton and Gage Rosier scored 10 points each. Miles added four rebounds and three assists. Gage added three rebounds, an assist and two steals. Jacob Parker had five points, five re-

bounds, an assist and two steals. Cole Rosier had two points, three rebounds and an assist. James Schoonover had two points, two rebounds and a steal.

The Panthers finished the season with a 22-8 record.

CONGRATULATIONS

To District 14

Coach of the Year Korey Miles
and to

Asst. Coach Jason Tenney and the rest of the Mound City Panther Basketball Team for being District and Sectional Champions!

Presiding Commissioner Mark Sitherwood, Second District Commissioner Don Holstine and Holt County Clerk Kathy Kunkel

Mound City
Community Calendar
brought to you by

Member FDIC

NODAWAY VALLEY BANK
the right bank...
614 State Street • 660-442-3131

March 18-20 - School dismisses at 12:30 p.m. March 18 and is closed March 19-20
March 23 - Holt County Government Day
March 24 - Mound City Athletic Banquet - 6:30 p.m.
March 25 - School Dismisses at 12:30 p.m. - Teacher In-Service
March 26 - 275 Conference Spelling Bee at Craig - 4:00 p.m.
March 26 - PK/PAT Family Fun Night at the school - 6:00 p.m.
March 26 - High School Track at Worth County Early Bird Relays (Grant City, MO)
March 28 - District Music Festival at St. Joseph
March 30 - Faculty/Senior Basketball Game at the Mound City Gym - 6:30 p.m.
March 31 - High School Track at North Platte Relays (Dearborn, MO)
April 3 - District Band Contest at Northwest Missouri State University
April 4 - Mound City Junior/Senior Prom
April 6 - Junior High Track hosts Holt County meet

Every Friday at the Mound City Nutrition Site
Doughnuts, Doughnut Holes, Cinnamon Rolls
8 a.m. until Sold Out

A.A. Mound City New Beginnings
Tuesdays and Fridays, 7 p.m.,
Community of Christ Church, 1410 Nebraska St., Mound City

Take Off Pounds Sensibly (TOPS), non-profit,
non-religious weight-loss support group,
Mondays, 4:30 p.m.
Concordia Lutheran Church, Mound City

Deadline for Calendar Items is Monday Evening

Lobby Hours: Monday thru Thursday 9 a.m.-4 p.m.; Friday 9:00 a.m.-5:00 p.m.
Drive-in Window: Monday thru Thursday 8 a.m.-5 p.m.; Friday 8 a.m.-6 p.m.; Saturday 8 a.m.-noon

CHECK OUT THESE OTHER CONVENIENT NVB LOCATIONS

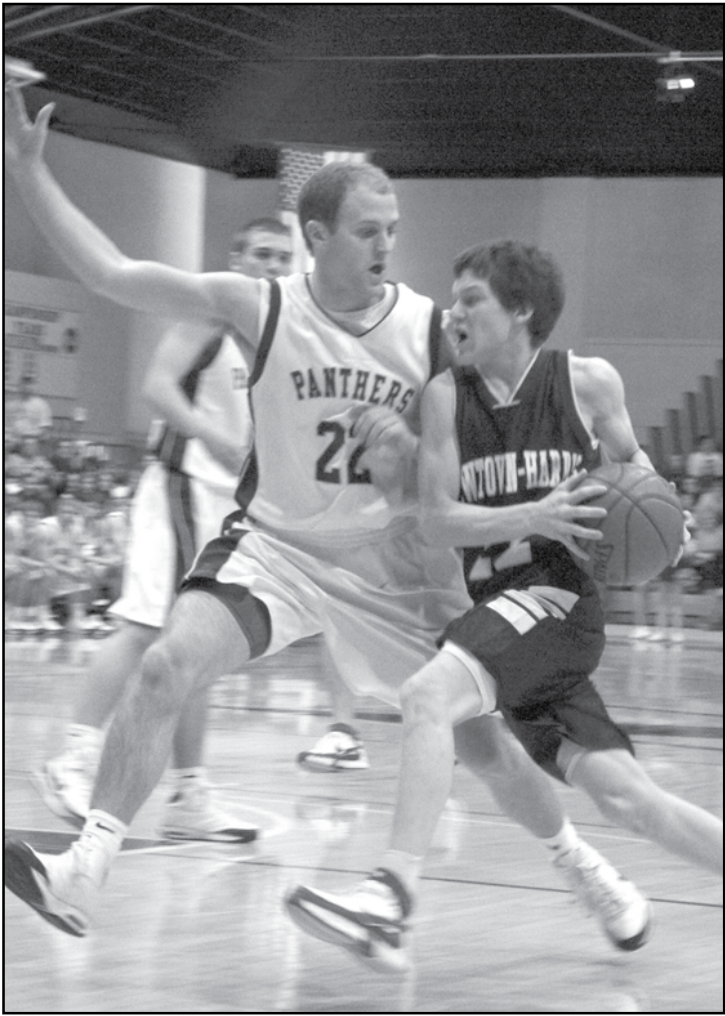
MARYVILLE
660.562.3232
Third & Main Street
209 N Buchanan (drive-up only)*
1303 S Main*

SAVANNAH
816.324.3158
301 S US Hwy 71*

ST. JOSEPH
816.364.5678
4001 N Belt Hwy & Cook Road*
402 N Belt Hwy & Faraon Street*
1701 S Belt Hwy*
1302 S Riverside & Mitchell Ave.*
6304 King Hill Avenue*

*Drive-up ATMs

nvb.com



Cole Rosier- Cuts off the drive to the basket by the Newtown-Harris player.

Our professional team has the answers you need.

Because you expect timely advice, you can count on
Danielle Sammon
Licensed Staff Assistant
for knowledgeable, friendly and reliable service. Call us anytime.

Your
American
Family
Agent

Richard Miles, Agent
PO Box 246
Mound City, MO 64470-0246
(660) 442-5910

Your
Licensed
Staff

Danielle Sammon
Licensed Staff Assistant

American Family Mutual Insurance Company and its Subsidiaries
Home Office - Madison, WI 53783
© 2006 002132 - 3/06



Nodaway County Land Auction

Steiger & Beedle Farms
Saturday - May 9, 2009, at 1:30 p.m.
Auction will be held in the
Community Building at Ravenwood, MO.



Selling as a complete unit. This is Platt River bottom land adjacent to Ravenwood, MO. Ravenwood is located 9 miles east of Maryville, MO. This land is in sections 12, 13 & 14; township 64N, range 34W
Selling as 432.15 taxable acres more or less. Farmland 503 acres, cropland 394.1 acres, soybean base 195.6, corn base 118.7. 80 acres are in pasture, that should be row crop. Sellers are very sincere about selling. Please inspect the farm & be with us sale date.

Showalter Auction and Realty Co.

Abie & Jonathan Showalter - 660-683-5438
Ronnie Flint - 660-442-5399
E-mail: showalt@asde.net
Fax: 660-683-5648



www.showalterauctions.com

Holt County Commission minutes

The Holt County Commission met Monday, March 2, with Presiding Commissioner Mark Sitherwood, First District Commissioner Bill Gordon and Second District Commissioner Don Holstine present.

After review, Commissioner Gordon made a motion to accept the minutes as written by County Clerk Kathy J. Kunkel. The motion passed unanimously.

Betty McComb and Phyllis Danner approached the Commission to request permission to use the courtyard square for the annual Relay for Life event Friday, June 5, 2009. The commission agreed to the use of the premises.

Brenda Nelson, R. N., Health Department Administrator, discussed the county's insurance liability coverage related to the rental of the Mound City United Methodist Church for WIC Services. Mrs. Nelson will review the policy with Cal-low Insurance.

Sheriff Scott Wedlock joined the commission and Mrs. Nelson to discuss the county's DOT drug testing procedures for CDL licensed drivers. Mr. Wedlock notified the Commission that he will not be able to use the State of Missouri's breathalyzer testing equipment for this purpose. County Clerk Kathy J. Kunkel has arranged for an independent, third-party testing facility to begin the quarterly drug testing immediately. The Holt County Health Department and the Sheriff's office will no longer provide this service. Mrs. Kunkel is working with OHS-Compcare, St. Joseph.

Sheriff Wedlock also reported on boiler and radiator problems at the jail. He is scheduling repairs. Sheriff Wedlock requested that the east door to the courthouse be locked during upcoming jury trials to help facilitate security measures in the building. The Commissioners agreed to locking the doors on those days which the Sheriff deems necessary for security purposes. County Clerk Kathy J. Kunkel will look into installation of push-door bar installation that allows persons to leave the building, but not re-enter without a key.

Mick Derr, Derr Insurance Services, appeared before the Commission to give an update on insurance needs. He discussed potential changes in the COBRA program for employees who leave the county's service.

Road and Bridge Supervisor Daryl Biermann joined the Commission to discuss a MoDOT Safety Training course he and the Road and Bridge employees attended. Mr. Biermann requested permission to replace an aluminum truck bed for one ten-wheel truck with a steel bed, which would allow the department to haul rip rap. The commission asked Mr. Biermann to bring back estimates. The Commission and Mr. Biermann reviewed drawings, specifications and engineering plans for the replacement of the Uplinger Bridge over the Nodaway River between Holt and Andrew counties. Andrew County is the primary agent for this replacement project, using FEMA funds from the June 2008 flooding.

The Commission reviewed contract documents from Midland GIS to update the current GIS mapping system and develop parcel mapping. The Commission signed the contracts.

The commissioners made plans to attend the Northwest Missouri County Commissioners' Association meeting, scheduled for March 26, 2009, in Mercer County.

Wayne Flanary, University Extension, joined the commission to discuss the groundbreaking ceremony set for Monday, March 16, at 11:30 a.m.

Being no further business, Commissioner Sitherwood adjourned the meeting until Monday, March 9, at 9:00 a.m.

The Holt County Commission met Monday, March 9, with Presiding Commissioner Mark Sitherwood, First District Commissioner Bill Gordon and Second District Commissioner Don Holstine present.

After review, Commissioner Gordon made a motion to accept the minutes as written by County Clerk Kathy J. Kunkel. The motion passed unanimously.

Brenda Nelson, R.N., Health Department Administrator, joined the commission to present a Liability Insurance Waiver for use of the Mound City United Methodist Church. She also discussed policy and procedures for referrals, pregnancy testing, non-English speaking patrons, car booster seat insurance and Woman, Infant and Child proxy. Commissioner Sitherwood signed updates for each of these policies.

Eric Livengood, Atchison-Holt Ambulance District Director, appeared before the commission to discuss Holt County 911 Services and related dispatching. The County Commission is considering a fee to the district for dispatching services based on volume of calls received at the Holt County Sheriff's Department by 911 telephone and radio communications. Sheriff Scott Wedlock joined the meeting. Sheriff Wedlock asked for numbers of emergency and non-emergency calls by the Atchison-Holt Ambulance District in 2008. County data collected from July through December 2008 shows a total of 1,452 calls, representing 52% of all calls logged in the Sheriff's office during that period. Presiding Commissioner Mark Sitherwood also requested Financial Statements, Payroll Statement and Full Financial Disclosure from the Atchison-Holt Ambulance District. Mr. Livengood agreed to provide the data and invited the commission to the next district board meeting March 18, at Community Hospital, Fairfax. No decision was made related to the total fee to be charged for dispatching services.

Road and Bridge Supervisor Daryl Biermann presented a quote from Haug Communications, St. Joseph, for radios in the Road and Bridge Department vehicles and equipment for \$8,327.50. The commission reviewed the quote and will take it under advisement to replace cell phones currently in use.

Wayne Flanary and Tom Kelso, University Extension, joined the commission to review plans for the groundbreaking ceremony. The commission approved the agenda for the ceremony.

Richard Wilson came before the commission to discuss service as a building inspector for the new construction of the courthouse annex building. The commission considered hiring Mr. Wilson as a contract employee to fulfill the county's obligation through the Community Development Block Grant to provide inspection services. The matter was tabled pending a review of funds available for this portion of the project.

Being no further business, Commissioner Sitherwood adjourned the meeting until Monday, March 16, at 9:00 a.m.

LEGAL NOTICES

NOTICE OF PUBLIC HEARING
MOUND CITY BOARD OF ZONING ADJUSTMENT
Public Hearing – 5:00 p.m., Tuesday, March 31, 2009, at City Hall for discussion of the following application for a Zoning Variance:
Applicant: Kenneth Chaney
Address: 104 Homedale Rd
Purpose: Replace existing mobile home in R-1 Residential District with newer model.

NOTICE
The annual meeting of the Board of Directors of Mount Hope Cemetery, Inc. shall be held Friday, March 27, 2009, at 7:30 p.m. at the Office of Crouse Motors, 110 East 5th Street, Mound City, MO.

TRUSTEE'S SALE

IN RE: Kevin Ridler and Ramona Ridler, husband and wife, Trustee's Sale:

For default in payment of debt and performance of obligation secured by Deed of Trust executed by Kevin Ridler and Ramona Ridler, husband and wife, dated October 22, 2004, and recorded in the Office of the Recorder of Deeds of Holt County, Missouri, in Book 362, Page 153, the undersigned Successor Trustee, at the request of the legal holder of said Note will, on Friday, April 3, 2009, between the hours of 9:00 a.m. and 5:00 p.m. (at the specific time of 12:25 p.m.), at the North Front Door of the Courthouse, City of Oregon, County of Holt, State of Missouri, sell at public venue to the highest bidder for cash the following described real estate, described in said Deed of Trust, and situated in Holt County, State of Missouri, to wit:

ALL OF LOTS 9 AND 10 IN BLOCK 7 IN THE ORIGINAL TOWN, NOW CITY OF FOREST CITY, MISSOURI

to satisfy said debt and cost.

MILLSAP & SINGER, P.C.,
Successor Trustee
612 Spirit Drive
St. Louis, MO 63005
(636) 537-0110
File No: 91530.040309.151461 FC

NOTICE

Pursuant to the Fair Debt Collection Practices Act, 15 U.S.C. §1692c(b), no information concerning the collection of this debt may be given without the prior consent of the consumer given directly to the debt collector or the express permission of a court of competent jurisdiction. The debt collector is attempting to collect a debt and any information obtained will be used for that purpose.

PUBLISH ON: March 12, 2009 03/19/2009, 03/26/2009, 04/02/2009

REQUEST FOR PROPOSALS
CITY OF CRAIG
The City of Craig will be accepting proposals until 3-27-2009 for Professional Services to provide us a detailed Engineering Report for our proposed new water treatment plant.
Send or bring proposal to:
City of Craig, 121 S. Main, P.O. Box 236
Craig, MO 64437
Mayor and Board of Alderman
Any questions call City Hall at 660-683-5412
City of Craig is an Equal Opportunity Employer

Soil and Water Conservation District of Holt County

To all land representatives of any farms lying within Holt County, Missouri, pursuant to the provisions of the Missouri Soil and Water Conservation Law, Sections 278.060 to 278.155 RSMo 1978, notice is hereby given that on the 31st day of March, 2009, between the hours of 7:30 a.m. and 3:30 p.m., an election will be held to elect the required number of supervisors to the Board of Supervisors of the Soil and Water Conservation District of Holt County, Missouri.

All land representatives of any farm lying within Holt County, Missouri, are eligible to vote. A land representative is the owner/representative authorized by power-of-attorney of any farm lying within any area of the district, provided however, that any land representative must be a taxpayer of the county.

Eligible voters shall cast their votes at the Holt County Soil & Water Conservation District office at 118 W. Davis St., Mound City.

All land representatives so designated by power-of-attorney must present their power-of-attorney form, properly signed to the polling judges at the time of voting.

Soil and Water Conservation District of Holt County
Bruce Biermann, Board Chairman

NOTICE OF TRUSTEE'S SALE

For default in the payment of debt secured by a deed of trust executed by John S. Balsamo, dated June 13, 2005, and recorded on June 14, 2005, in Book No. 366, at Page 122, in the Office of the Recorder of Deeds, Holt County, Missouri, the undersigned Successor Trustee will, on April 10, 2009, at 12:15 p.m., at the North Door of the Holt County Courthouse, Oregon, Missouri, sell at public venue to the highest bidder for cash:

All of Lots Fifty-five (55), Fifty-six (56) and Fifty-seven (57) in the O'FALLON VIEW, an addition to the City of Oregon, Holt County, Missouri, commonly known as 603 Maple Street, Oregon, MO 64473

subject to all prior easements, restrictions, reservations, covenants and encumbrances now of record, if any, to satisfy the debt and costs.

South & Associates, P.C., Successor Trustee
First Publication: March 19, 2009.
For more information, visit www.southlaw.com

NOTICE

Pursuant to the Fair Debt Collection Practices Act, 15 U.S.C. §1692c(b), no information concerning the collection of this debt may be given without the prior consent of the consumer given directly to the debt collector or the express permission of a court of competent jurisdiction. The debt collector is attempting to collect a debt and any information obtained will be used for that purpose (No. 96836).

Holt County Real Estate transfers

March 2-6
PHH Mortgage Corporation to Federal National Mortgage Association, Mount Laurel, NJ; Lots 5, 6, 7 and 8 in Block 7 in the original town of Maitland.

Daniel L. Palmer, et ux to Daniel L. Palmer, et ux T.O.D. a beneficiary deed; The north one-half of Lot 3, Tubbs subdivision in the Northwest Quarter of Section 31, Township 61 north, Range 39 west in Holt County.

David D. King, et ux to Jimmie Book, Forest City, MO; Lots 14 and 15 and the west four feet of Lot 16, Lots 12 and 13 with exceptions in the original town, now city of Forest City, see record for full description.

William L. Hanks Revocable Trust, by successor co-trustees to Adventure Land, LLC, Maryville, MO; The west 73 acres of the Southwest Quarter of Section 14, Township 62 north, Range 39 west of the 5th P.M., for full description see record.

Ryan R. Radley, et al to Radley Family Limited Partnership, Oregon, MO; All the Northwest one-fourth of the Southeast one-fourth and all of the east one-half of the Southeast one-fourth, with exceptions; the east half of the Northeast Quarter of Section 29, Township 62 North, Range 37 west of the 5th P.M.; all the undivided interest in the Southeast Quarter of Section 25, Township 60 north of Range 38 west of the 5th P.M., subject to public roads and highways.

Cameron Radley, et al to Radley Family Limited Partnership, Oregon, MO; All the

undivided interest in the Southeast Quarter of Section 25, Township 60 north of Range 38 west of the 5th P.M.

William E. Radley, Jr. et al to Radley Family Limited Partnership, Oregon, MO; The south 18 acres of the Southeast Quarter of the Southeast Quarter of Section 22 with exceptions, see record for full description.

Jerry R. Danbury to James C. Danbury, et ux, St. Joseph, MO; All of Lots 15, 16, 17 and 18, the first addition to the George E. and Ina Nadine Danbury Subdivision of a tract on Big Lake, in Lots 2 and 3, Section 30, Township 61, Range 39, Holt County.

Danny L. Danbury, et ux to James C. Danbury, et ux, St. Joseph, MO; All of Lots 15, 16, 17 and 18, the first addition to the George E. and Ina Nadine Danbury Subdivision of a tract on Big Lake, in Lots 2 and 3, Section 30, Township 61, Range 39, Holt County.

Jonah R. Radley, et ux to John Nenneman, et ux, Craig, MO; All of Lots 15 and 16 in Block 3 of H.L. Ward's Addition to the town of Craig.

March 9-13
IN RE: Survey for Chris Kurtz; Sect. 17, T-60N, R-37W, Plat Cabinet B, Page 331.

Thomas L. Fischer to Richard Nicholson, St. Joseph, MO; That part of Lot 5 of Tubb's subdivision, a subdivision of the Northwest Quarter of Section 31, Township 61 N, Range 39 west, Holt County, see record for full description.

Gary Glenn Cooper, et ux to Clint Killin, Craig, MO; The Southeast Quarter of the Northwest Quarter and the North 198 feet of the north half of the Southwest Quarter, all in the North-west Quarter of Section 23, Township 62 north, Range 39 west of the 5th P.M. Holt County with exceptions, see record for full description.

Dennis F. Sullivan, et ux to Jerry F. Kubiszewski, Tea, SD; Two tracts, tract one: all of Blocks 52, 53, 54, 61 and 62 and Lots 1, 2, 3, 4, 5, 6 and 7 in Block 60 in the original town, now city of Forest City, see record for full description, tract two: all of Lots 10, 11 and 12 in Block 60 in the original town, now city of Forest City.

Booker B. Burton, et ux to Linda D. Burton Yarbrough, Corpus Christi, TX; Forest City OT Lots 12, 13, 14 in Block 95; East one-half va-

cated street west of and adjacent to said lots.

Booker B. Burton to Demetrius D. McGlothlan, Garland, NE; All of Lots 1, 2, 3, 4, 5, 6 and 7 in Block 92 and all of Lots 1, 2, 3, 4, 5, 6, 7, 8, 9, 10 and 11 in Block 95, in the original town, now City of Forest City.

George Barker to George Barker, T.O.D., Mound City, MO; Beneficiary deed, Lots 1 and 4 in Block 2, Gaskill and Canon's Addition to Craig.

Larry L. Hicks, et ux to Larry L. Hicks, et ux, T.O.D., Oregon, MO; Beneficiary deed, Lots 9, 10, 11 and 12 in Southview Estates, a subdivision in Holt County, MO and Lot 14 and a 31 foot strip adjoining Lot 15, all in Elliott's Addition in and to the city of Oregon, and Lot 15 of the Elliott Survey.

Safety day camp for local children

The University of Missouri Extension/Harry F. Messick Day Camp will be held Saturday, April 4 at the Forest City Park from 9:00 a.m. to 3:00 p.m. This year's theme is "Learn and Be Safe".

Any second grade through sixth grade youth is invited to attend this free event. Pre-registration is required and teal-colored forms have gone home with the students from the Craig, Mound City, and South Holt schools.

Area children wanting to attend from the Nodaway-Holt school district or home-schooled students are also welcome.

Safety mini sessions in the areas of Fire, Animals, 911 with your cell phone, Food, Farm, and other topics will be presented. Lunch will be provided. Children will also be given a photo memory bag with take home information

CLASSIFIEDS

MISCELLANEOUS

GREG'S JEWELRY
- Aquamarine Jewelry &
March Birthstones.

34/4tc

GUN REPAIR- Howard's
Gun Repair. Craig, MO 64437.
660-683-9401.

35/4tc

FOR SALE - 10-Gun, gun
cabinet, glass doors. 660-442-
5253.

36/2tc

FOR SALE - 2004 EZ-Go
electric golf cart with 2007
batteries. Charger included.
\$2250. Call evenings at 660-
442-6333.

35/tfc

REAL ESTATE

FOR SALE - 306 Weight-
man, Mound City, 3 bedrooms,
two full baths, finished base-
ment. Completely remodeled.
Great location across from
city park, swimming pool
and golf course. Tour online
at www.aokhometours.com
or call 442-4018 for an ap-
pointment. Recently reduced!
Asking \$112,000.

21/tfc

COUNTRY LIVING- 2
bedroom, 1 bath - 1800 sq.
ft., rural water. Outside of
Mound City. Patterson Realty
& Auction. 816-803-3951.

22/tfc

ENTERPRISE REALTY

Jim Loucks, Sales Agent
Home 660-442-5253
Office 660-582-7160

LAND FOR SALE

- 221 A. in Nodaway County
- 160 A. in Atchison County
- 100 A. in Holt County



**PRIME MISSOURI RIVER BOTTOM
LAND AUCTION**
CORNING, MO, AREA
5 Tracts, Holt CO, MO:
82 Ac., 38 Ac., 32 Ac., 46 Ac. & 48 Ac.
Check our web site for complete information or call and
request a brochure.
Date: March 24, 2009 Time: 10:30 a.m.
The Black Iron Grill on West Hwy. 136, Rock Port, MO
660.442.3177
www.barnesrealty.com
Rick Barnes, Broker - Jamie Barnes, Agent

HOMES IN MOUND CITY AREA!

- **PRICE REDUCED** - 3 Bedroom, vaulted
ceiling, with fenced back yard.
- Well cared for 1 bedroom bungalow
with utility shed.

Ted Yocum, Broker/Salesman • 660-442-6304



HALL REALTY
1308 State St., Mound City, MO
660-442-3116
www.hallrealty1.com

WANTED: ACREAGE

Wanting to purchase 10-15 (or so) acres to build
a house. Timber. Close to Mound City, ideally
within a few miles of town with easy
access to property. Call 816-752-2324.

DAVIS CONSTRUCTION
For your remodeling & building needs

812 Nebraska
Mound City, MO

816-383-2959

Quality work, Affordable prices!
mpdavis76@hotmail.com



Michael Davis
Owner

Johnson Heating and Cooling
Casey Johnson, Owner

660-442-6354

Licensed and Insured
Specializing with Trane and Heil models

All Your Flooring Needs

- Tile
- Carpet
- Laminate Flooring
- Linoleum



Installation Available

McINTIRE BUILDING CENTER

108 W. 7th, Mound City, MO 660-442-5416
Store Hrs.: Mon.-Fri. 7:30-5; Saturday 7:30-4

MUSCADINE GRAPE POWER JUICE

*Now available, backed by scientific research
and informed doctors.*

*Many people are now finding this special formula is offering
potential protection against many inflammatory conditions
that lead to serious diseases so common in our modern age.*

For free information please contact:
Consultant: Joyce Burke DJB Healthy Living Systems
24009 Atchison Holt Road
Fairfax, MO 64446
E-mail: djburke@fairfaxmo.net



JEAN MANEKE ATTORNEY-AT-LAW

115 West Nodaway
Oregon, Missouri
660-446-3453

Phone Answered 5 Days a Week
Office Hours 9:00 a.m. to 4:30 p.m. Every Tuesday
Principal office in Kansas City, MO

The Promise of Dignity



Available 24 hours a day ... every day
Skilled and personal nursing care
Pain and symptom management
Bereavement care for family members
and caregivers

AseraCare Hospice - St. Joseph
102 S. 5th Street • St. Joseph, MO 64501
816-676-2600

asera care hospice

www.aseracare.com

AseraCare Hospice welcomes all persons in need of its services and does not discriminate
on the basis of age, disability, race, color, national origin, ancestry, religion, sex, or source
of payment. 405-0191-108

You're More Than Just A Prescription to Us...

- Lift Chairs
- Seat Lift Assists
- Diabetic Care
- Home Oxygen



ROGERS PHARMACY

607 State St. - 442-3355 - 800-962-0096
After Hours 660-683-5384

PUBLIC NOTICE SURPLUS ITEMS FOR SALE

The Mound City Public Library is accepting
bids for surplus property located in the
old library space at city hall.
**Bids will be accepted from Monday, March
16th - Monday, March 23rd at 6:00 p.m.**
Bid sheets will be attached to each surplus
item. All property sold as is/where is.
For more information contact the librarian at
the Mound City Public Library or
call 660-442-5700.

Stripes & signs

& Other Neat Stuff!



SCHOOL TEAMWEAR A SPECIALTY!

BIG CITIES CAN'T BEAT OUR HOMETOWN SERVICE!
Falls City, NE • 402-245-5323
www.otherneatstuff.com



S. Chavala, M.D.

Diplomate American Board of Ophthalmology

Eye Exam For Glasses and Contacts

• Cataract and Implant Surgery • Laser Surgery

• Welcome All Eye Care Plans • Accepts Medicaid • Medicare Participating Physician

OPTICAL STORE ATTACHED

2024 South Main, Maryville, MO 64468

660-562-2566 or 1-800-326-1399

CLODFELTER AGENCY, INC.

AUTO • HOME • BUSINESS • FARM • CROP • HAIL • LIFE • HEALTH



Charles D. Clodfelter, Agent
Mound City, MO
610 State PO Box 368
Phone (660) 442-3195
toll free - (866) 650-4067

Jim D. Clodfelter, Agent
Rock Port, MO
205 S. Main
Phone (660) 744-5385
toll free - (866) 217-3345

LEGAL NOTICE

TRUSTEE'S SALE

**IN RE: Roberta Jennings and Ronnie E. Jennings,
wife and husband, Trustee's Sale:**

For default in payment of debt and performance of obligation secured by Deed of Trust executed by Roberta Jennings and Ronnie E. Jennings, wife and husband, dated June 13, 2005, and recorded in the Office of the Recorder of Deeds of Holt County, Missouri, in Book 366, Page 259 the undersigned Successor Trustee, at the request of the legal holder of said note will on Friday, April 10, 2009, between the hours of 9:00 a.m. and 5:00 p.m., (at the specific time of 12:25 p.m.), at the North Front Door of the Courthouse, City of Oregon, County of Holt, State of Missouri, sell at public venue to the highest bidder for cash the following described real estate, described in said Deed of Trust, and situated in Holt County, State of Missouri, to wit:

THE EAST HALF OF LOTS FIVE (5) AND EIGHT (8),
BLOCK ONE (1), IN THE ORIGINAL TOWN, NOW
CITY OF OREGON, HOLT COUNTY, MISSOURI. SUB-
JECT TO ALL PUBLIC AND PRIVATE ROADS AND
EASEMENTS.

to satisfy said debt and cost.

MILLSAP & SINGER, P.C.,
Successor Trustee
612 Spirit Drive
St. Louis, MO 63005
(636) 537-0110
File No: 92487.041009.153743 FC

NOTICE

Pursuant to the Fair Debt Collection Practices Act, 15 U.S.C. §1692c(b), no information concerning the collection of this debt may be given without the prior consent of the consumer given directly to the debt collector or the express permission of a court of competent jurisdiction. The debt collector is attempting to collect a debt and any information obtained will be used for that purpose.

PUBLISH ON: March 19, 2009 03/26/2009, 04/02/2009,
04/09/2009

WANTED: ACREAGE

Wanting to purchase 10-15 (or so) acres to build a house. Timber. Close to Mound City, ideally within a few miles of town with easy access to property. Call 816-752-2324.



118 S. Maple Ave. • Maitland, MO 64466

We are expanding our mowing business in the area.

Taking new customers now!

Call for a free quote.

660-582-1627
or
660-935-2379

Joe Shippa
You've seen the quality of our work.

— NOW STARTING OUR 19th YEAR MAINTAINING LAWNS —

LAUKEMPER'S MARCH SPECIALS

EMPLOYEE PRICING PLUS

Plus Rebates
Plus 0% Financing
plus LIFETIME WARRANTY

See us now for this special limited offer

Check out these certified pre-owned

2008 Hummer H3		2008 Dodge Grand Caravan, SXT, Stow 'n Go
2008 Impala 4-Door, 2.9% APR \$14,995		2008 Chevy Aveo \$10,995
2008 Colbalt Coupe, 2.9% APR \$9,995		2008 Dodge Avenger
2008 Dodge Journey, FWD		2007 Dodge Grand Caravan
2007 Chevy Uplander		2006 Jeep Commander
2008 Pontiac G5, Coupe		2007 Impala, Brilliant Blue, Sunroof
2008 Colbalt LT, Coupe, Sunroof, Leather		
		

Northwest Missouri's Premiere Service Dealer
Serving The Area Since 1946.

Laukemper

Chrysler - Dodge - Jeep
Chevrolet - Pontiac

Chrysler
I-29 & Hwy. 59 • Mound City, MO
660-442-5438
800-490-8035

GM
3rd and Nebraska • Mound City, MO
660-442-9942
800-381-9942

THE MINT

Forest City, MO • 660-446-9795

OPEN 7 DAYS A WEEK

HOURS: MON-SAT 9 A.M.-1:30 A.M.
SUNDAYS 11 A.M. 'TIL MIDNIGHT

MON THRU FRI NOON BUFFET \$6⁹⁵

SUNDAY BUFFET \$7⁹⁵

WED. NITE FISH & CHICKEN FRY \$8⁹⁵

FRI. NITE : BBQ RIBS \$8 ⁹⁵

SAT. NITE : CATFISH & SHRIMP \$9 ⁹⁵

Friday, March 20th

DJ Nick 7 9:00 p.m. – 1:00 a.m.

SEATING FOR UP TO 200

Craig Summer Fest news

Plans are firming up for the first annual Craig Summer Fest.

At a meeting held March 11, at the Duck Inn Cafe, plans for the three day event continued to evolve as new items were added and confirmed.

Friday night, July 24 will see the opening ceremony with a chuckwagon supper on Main Street followed by a street dance featuring the Herschel Hughes Band.

The Saturday parade will begin at 10:00 a.m. The Craig senior class will host a lunch following the parade. New events confirmed for Saturday included a 3-on-3 basketball tournament sponsored by the CFX football team (for more information contact Josh Petersen), Craig Booster Club Betsy Bingo, Girl Scouts petting zoo and a Missouri Conservation Department exhibit. During Saturday evening a teen band will perform in the park.

Sunday starts off at 10:30 a.m. with a community worship service. The Craig junior class will sponsor a lunch to follow.

Throughout the event there will be a food stand by the Lutheran Youth Fellowship, ice cream floats will be available from the CFX cheerleaders and the Craig Jail will be on display. Craft and flea market vendors will be set up on Saturday and Sunday.

Plans are still in the works and other items may still be added to the weekend events.

Converting CRP to crop ground

There are many acres of Conservation Reserve Program (CRP) in Northwest Missouri. Converting CRP acres from grasses and brush into crops requires special consideration.

Much of the land that was moved into CRP originally was lower yielding and often eroded. It is best to convert these acres into cropland using no-till farming practices unless the land is too rough. In that case, tillage may be done to level the field.

The existing vegetation in the CRP field can be difficult to kill. Grasses such as tall fescue, smooth brome are more easily controlled than warm-season grasses. Often there are small tree saplings and other shrubs that have started in the field. These hard to control plants often require more than one treatment application.

When using herbicides, it is recommended that you remove the old top-growth. This can be handled by burning or haying. The regrowth is easier controlled with herbicides. The best time to control cool-season grasses is the fall. This allows the products to move downward into the plants and provides better control. Also, Roundup Ready crops provide flexibility to control escaped plants during the growing season.

Also, the thick mat of grass and weed residues can cause problems when no-till planting. The planter will need enough weight to cut through the CRP residues. Also, the old residue if not removed, can shade the new emerging crop seedlings causing poor growth.

Be sure to soil test before you plant crops so you can apply the appropriate nutrients. Many of these fields will have low levels of nutrients and application rates can be determined from the soil test. Nitrogen will be tied up as ex-

Mound City Kiwanis to hold trap shoot competition

Mound City Kiwanis will be hosting a Trap Shoot and Five Stand Competition with side games of flurry and long bird competition on Saturday, April 18, 2009.

The competition will be held on the Mound City rodeo grounds near the I-29 and Hwy. 118 intersection from 12:00-6:00 p.m.

Entry fees are \$50 per gun with teams of five being required. The entry fee includes dinner at The Klub in Mound City, which will follow the competition. A silent auction will accompany the dinner with items donated from Ducks Unlimited, NWTF (National Wild Turkey Federation), Quail Unlimited and Pheasants Forever.

In addition to the competition, there will be a free shoot and safety instruction for children and women interested in learning about trap shooting.

For more information or to register your team contact Buck Heath, Promatic at 816-520-7924, or Jonathan Miller, Kiwanis, at 816-596-5425.

This event is a fundraiser for Mound City Kiwanis. Monies earned will go into a fund supporting scholarships, school programs and local arts.

isting vegetation dies and decomposes. Nitrogen fertilizer applied to the field will be tied-up as microbes use fertilizer nitrogen to decompose plant material. Therefore, soybeans should be considered as they make their own nitrogen. Be sure to inoculate the soybean seed if you choose to plant this crop.

However, if you decide to plant corn and winter wheat into CRP, be sure to provide adequate amounts of nitrogen. The nitrogen release from the decomposition of CRP residues will lag the first year and more

Spring cleaning in the freezer

By Janet Hackert, Regional Nutrition and Health Education Specialist

While spring seems to be playing hide and seek with us this year, perhaps this is a good time for spring cleaning- in the freezer, that is.

If a freezer does not automatically defrost, it is a good idea to defrost it occasionally. Defrost manual models at least once each year or more often if the frost is 1/4-inch thick or more. Although it is most efficient to operate a freezer full or near full, the best time to defrost is when the freezer is somewhat empty. For food safety reasons, be sure the process takes two hours or less with food sitting out of the freezer.

Unplug the freezer for this process. Place frozen food in insulated coolers or in newspaper-lined cardboard boxes to keep food cold. Remove frost by following the manufacturer's instructions. A plastic spatula or wooden spoon can be used to scrape out ice. And a towel in the bottom of the freezer can help catch water and frost as things melt.

When the freezer is frost free, wipe it out with a solution of one tablespoon baking soda per quart of water to clean and freshen the interior. Sponge clean with straight water and dry with a towel or cloth.

Turn the freezer back on and close the door to let it cool down again. After about 15 to 30 minutes, when chilled, replace the frozen food. Since these items have been out of the freezer, mark them for first use. The freezer should be operated at 0°F or colder.

While the food is out, this is a good time to cull out items that need to be used sooner than later. MU Extension guide sheet MP 689, A Quick Consumer Guide to Safe Food Handling has a chart showing recommended freezer storage times. If food has been in the freezer longer than specified, quality concerns may become an issue. Anything unidentifiable may just need to be tossed, or composted to make ready for the coming planting, harvesting and storage.

The Klub

NIGHTLY SPECIALS ALL WEEK

Friday Night: Grouper

Saturday Night: Prime Rib

Now Open
Tuesday-Friday Lunches
Tuesday-Saturday Evenings

Tues, Wed & Thurs 11-2 & 5-9; Fri 11-2 & 5-10; Sat 5-10

North End of Nebraska St., Mound City • 660-442-4043

eat fresh.

SUBWAY

\$5.00 FOOTLONGS!!

NEXT WINE TASTING:
Monday, April 20

New Supply of
Willow Tree
Figurines

Mound City, MO
(660) 442-3600

Kwik zone

MOUND CITY SHELL

Exit 84, I-29 Mound City, MO 660-442-3200

CIGARETTE OUTLET

Carton Prices:
Doral—\$21.99
Marlboro—\$29.69
Pall Mall—\$20.99
Camel—\$27.49
Decade—\$15.99

LIQUOR STORE

LOWEST PRICES ON BEER!

99¢ 1 Scoop
Every Day!

BR
baskin
robbins



EXPRESS
TACO