



Mound City NEWS

Published & Printed in
Mound City, Missouri
Vol. 131, No. 47
75¢
www.moundcitynews.com

Serving all of Holt County, Missouri, since 1879. Home of Squaw Creek National Wildlife Refuge & Big Lake State Park.

THURSDAY • JUNE 2 • 2011

DAM WATER HEADED OUR WAY

Gavins Point Dam in South Dakota expected to release record water flow

It appears that Holt County is headed for another devastating flood. With large amounts of water from the north heading down the Missouri River, the entire county, as well as counties to the north and south, is preparing for the worst. Levees all along the Missouri River have been repaired from the flood of 2010. Most of these levees and the newly constructed levees have been built to contain a 28' river. The U.S. Army Corps of Engineers' decision to send record amounts of water south, however, may sabotage the vehement efforts by farmers and levee districts to protect homes and livelihoods here in Holt County. The anticipated magnitude and longevity of this flood may also test the freshly made and repaired levees, which may prove no match for the Mighty Missouri or the fierce winds that are indicative of Missouri weather. The combination of the inevitable flood factors may ultimately erode this county's strong agricultural vestige and recreation area.

U.S. Army Corps of Engineers

The U.S. Army Corps of Engineers held a press briefing on Saturday, May 28, to share with the media and public the anticipated water releases on the upper Missouri River. The releases will inevitably have long lasting flood effects on four or more states to include Missouri in the next few months. Releases from the Missouri River reservoirs north of the Missouri state line will be increasing over the next month and potentially create flooding at record levels again in Holt County.

Flows from five of the six dams on the Missouri River reservoirs are expected to reach a record 150,000 cfs (cubic feet per second) by no later than mid-June. Releases from Gavins Point Dam in South Dakota are predicted as such and will gradually increase from the current 69,000 cfs to 100,000 cfs this week.

According to the Corps of Engineers, above-normal snow pack and extraordi-

nary rain events (a 9' rainfall total), as well as rapidly changing weather conditions in the northern states, have caused the Corps to change earlier predictions. The U.S. Army Corps of Engineers is predicting that levees along Holt County will be breached or overtopped in the coming weeks. Significant flooding in cities, towns and agricultural land is expected along the Missouri River route, with flooded areas anticipated to be inundated for several months.

Holt County Emergency Management Officials and Holt County Commission urge evacuations

The Holt County Commission met on Monday, May 30, in consideration of the potential flooding and to take proactive measures for flood preparedness within the Missouri River floodplain. At 22.77 feet (flood stage is 17 feet) on Tuesday, May 31, the Missouri River threatened the area around Big Lake with floodwaters even without a levee breach. Predictions by the Corps of Engineers of up to nine inches above flood stage at Rulo, NE, created an alarming concern for residents and officials in Holt County. At 24 feet, a large area of the floodplain may be impacted by floodwaters.

Levees that sustained damage in the 2010 flood have been repaired, but caution is urged as any new levee breaches can change the path of the floodwaters and are difficult to predict. By Tuesday afternoon, May 31, Holt County Emergency Management officials and the Holt County Commissioners were strongly urging residents living within the Missouri River floodplain to evacuate in the coming days, as the Missouri River approaches 24 feet at Rulo. The volume of water being released at Gavins Point Dam, combined with downstream tributary water, will increase the volume to approximately 210,000 cfs, which translates to a 25 feet river height. Should a breach occur, residents and

visitors should know their safe route out of the floodplain.

"This is a manmade flood and is the result of total mismanagement by the Corp of Engineers," stated Holt County Presiding Commissioner Mark Sitherwood. "We have been crying out to Washington for five years about this very thing and no one wants to listen." Widespread flooding occurred in Holt County in 1993, 2007 and 2010, when the river crested at or above 25 feet. Officials remind residents that this type of widespread flooding may mean that they may not be able to return to their properties right away. Residents should make long-term housing plans.

Commissioners have 20,000 to 25,000 sandbags on hand. Requests have already been made to the State Emergency Management Agency (SEMA) for watercraft because of potential security concerns. The Holt County Commissioners are asking residents and visitors to have an Action Plan which includes: Monitoring the river levels, watches and warnings; prepare and plan; know where you are going if you are required to evacuate - tell someone; have a phone number exchange with family, friends and neighbors;

have your medicines in an easy to reach container - take it with you if you are required to evacuate; and take your pets out with you - if you are required to evacuate.

Big Lake Village and State Park

Big Lake State Park, which began monitoring lake levels on Wednesday, May 25, had already registered a 9" rise by Wednesday, June 1. Big Lake State Park will remain open on a day-to-day basis dependent on flooding conditions.

The Village of Big Lake held a meeting on Tuesday, May 31, to discuss evacuation plans as well as its state of readiness in anticipation of the possible long-term floodwaters. If the village is forced to evacuate in the coming days, the Village office will be located in Mound City at the Barnes Realty office.

The predicted flooding could potentially dislocate many people. If one has to evacuate and does not have a place to stay, contact Paul Grant at the Red Cross Shelter at the First Christian Church in Mound City at 660-442-3104. If anyone has temporary housing or space available for those displaced by the foreseen flood, contact Diane Phillips at 660-442-3566 or 816-244-3892.

Donate to the 4th of July Blast

Donations are being accepted at the Mound City News office to build the Mound City 4th of July Blast fund. Checks can be dropped off at the Mound City News office anytime, or they can be sent by mail to Mound City News, PO Box 175, Mound City, MO 64470.

Holt County Relay for Life to be held June 3-4

The Holt County Relay for Life will be held on the square in Oregon, MO, from 6:00 p.m. on Friday, June 3, to 6:00 a.m. Saturday, June 4.

Activities will begin at 6:00 p.m. with the opening ceremony and survivors' lap. There are many events planned for children, including the Ping Pong ball drop at 7:30 p.m., games and kids' laps.

Everyone is welcome to join in on the evening full of fun.

Bellevue School Reunion to be held this Saturday

The Bellevue School Reunion will be held Saturday, June 4, at the United Methodist Church in Mound City, MO. Registration will begin at 6:30 p.m. with the meal being served at 7:00 p.m. Entertainment will follow the meal.

The reunion to open to everyone associated with the school. For more information call 660-935-2230.

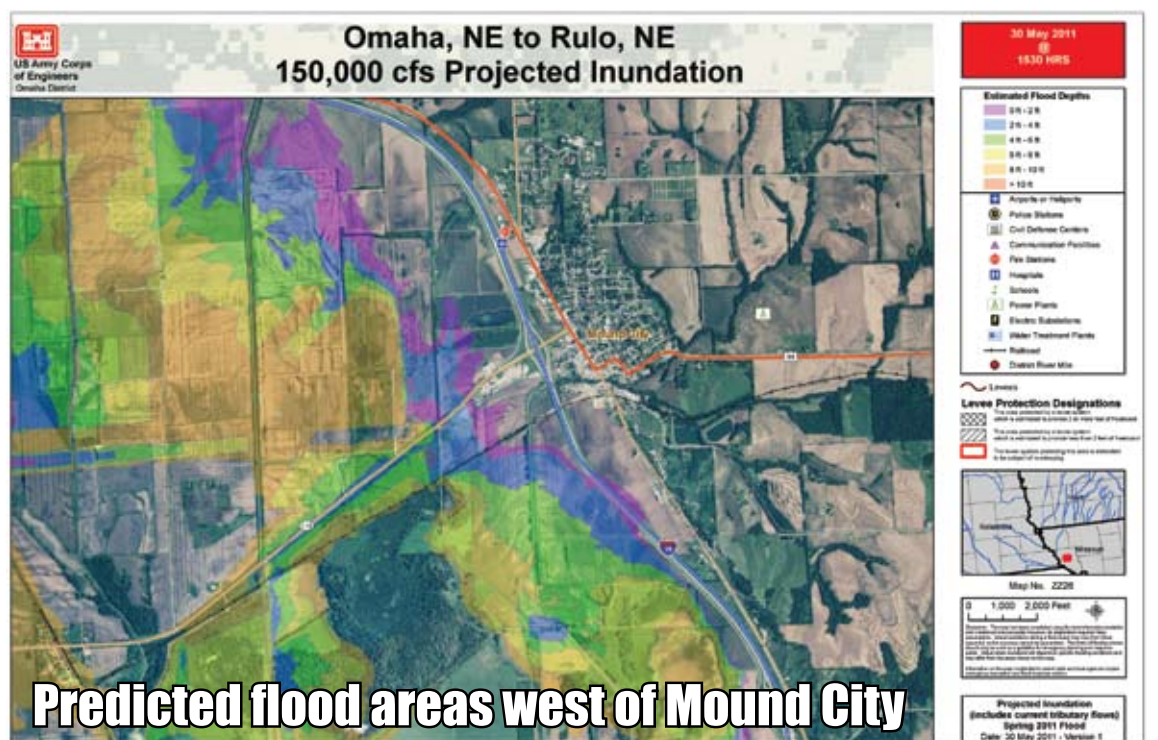
Junie B. Jones strikes again at the State Theater

The Mound City Public Library's summer reading program, "One World, Many Stories", will be presenting "Junie B. Jones Strikes Again" at the State Theater in Mound City on Wednesday, June 8. The program will begin at 2 p.m.

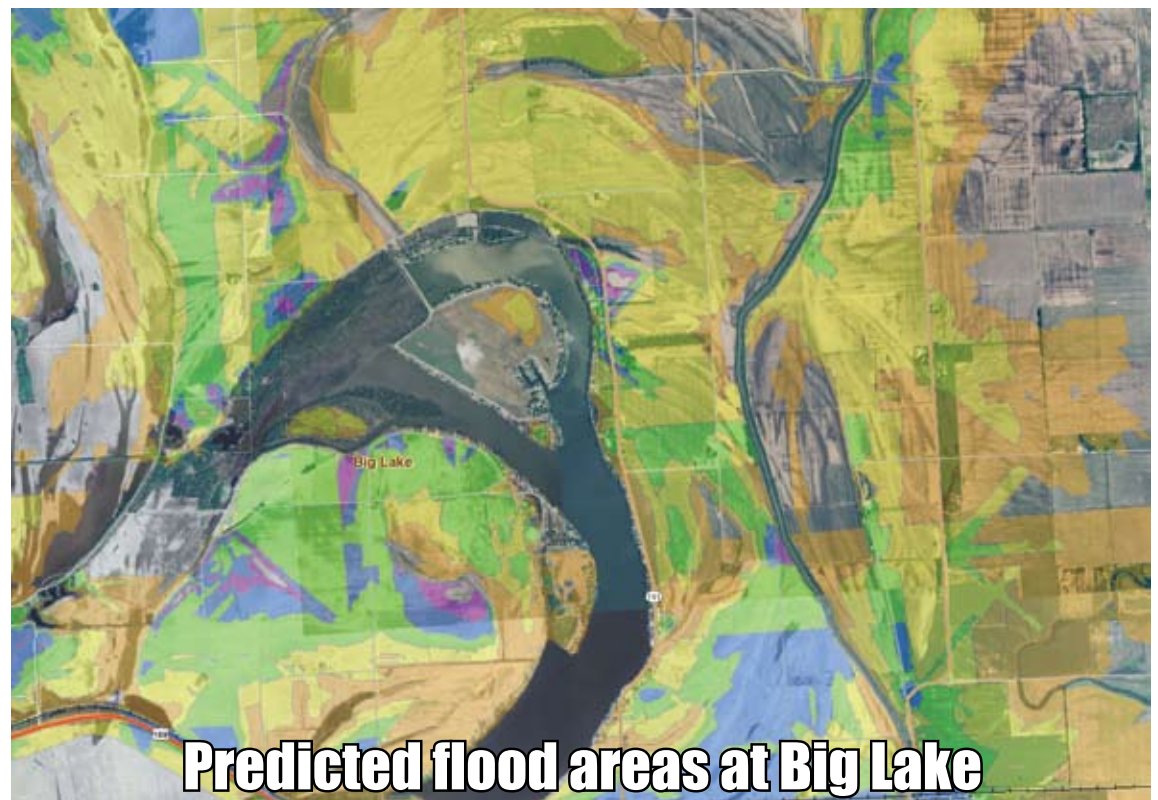
Who could forget that first and second grade sensation, Junie B. Jones, and all her wacky adventures? Junie B. will be traveling to Mound City all the way from Overland Park, KS. She's overjoyed to be taking the audience on a special journey.



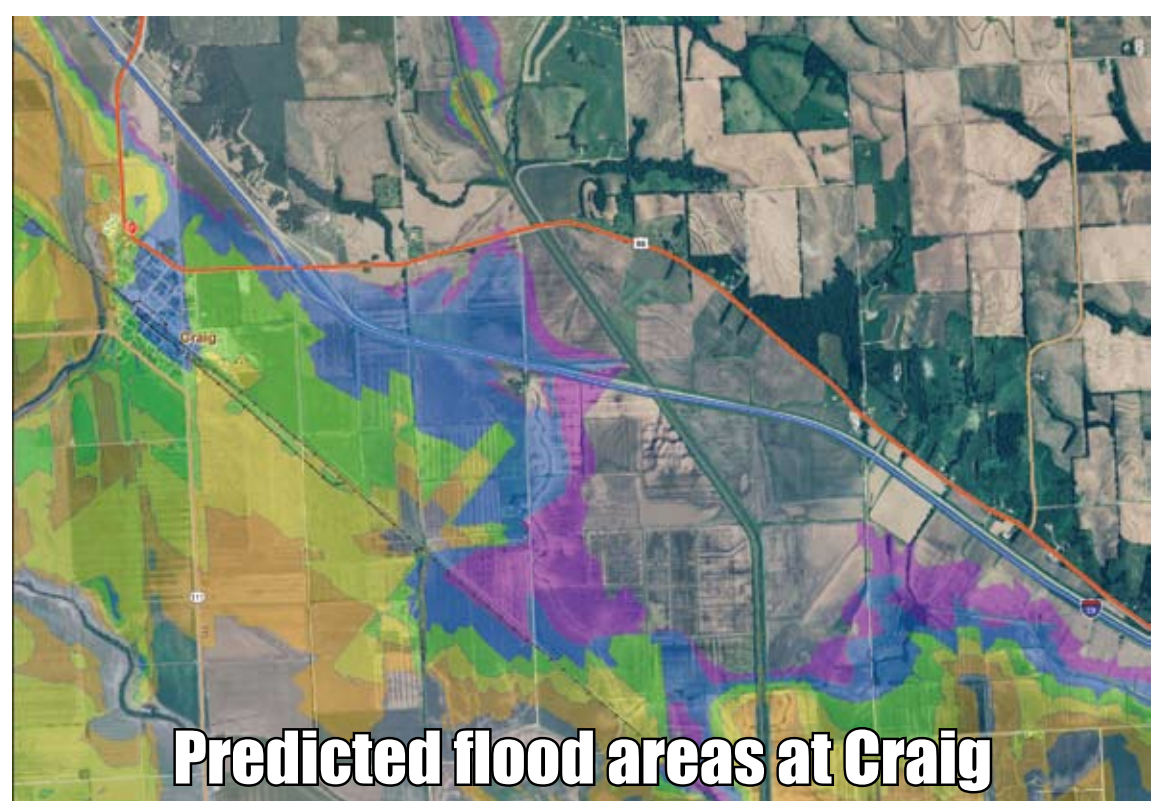
River levels near the barge terminal, south of Craig, MO - Reflect the inevitable ... a 2011 flood. The Army Corps of Engineers has released predictions about expected river stages due to the amounts of water being released from dams in the northern states along the Missouri River. The river stage at Rulo, NE, was 22.9 feet on Tuesday evening, May 31. The corps was releasing 85,000 cubic feet per second (cfs) until June 2, when it will begin releasing up to 150,000 cfs.



Predicted flood areas west of Mound City



Predicted flood areas at Big Lake



Predicted flood areas at Craig

Mound City NEWS
Established 1879
(USPS 364-920)
511 State St.
PO Box 175
Mound City, MO 64470
(660) 442-5423
Fax (660) 442-5423
E-mail: moundcitynews@socket.net
www.moundcitynews.com

Adam Johnson
Owner/Publisher

Lisa Yocum, News & Sports Editor
Jessica Lindsay, News & Circulation
Debbie Johnson, Advertising

Member Missouri Press Association



\$30 PER YEAR
Holt, Nodaway, Andrew, and Atchison Counties.

\$35 PER YEAR
Elsewhere In Missouri and All Other States.

All Subscriptions Are Due In January

Published weekly on Thursdays and entered as periodical publication at the Post Office at Mound City, Missouri 64470.

POSTMASTER:
Send changes of address to:
Mound City News
PO Box 175
Mound City, MO 64470

Copies available each week at our office and at: Craig Country Store, Craig; Prop In, Big Lake; Water's Edge, Big Lake; Forest City Diner; Country Corner and Price's Grocery, Oregon; The Smokehouse, Graham; Skidmore Service, Skidmore; Rocky's Pit Stop, Maitland; Mound City Thriftway, Mound City Shell, Kwik Zone, George's C-Store in Mound City.

4th of July Blast!

Total last year **\$5,405.00**

Total this year **\$950**

You may bring donations to the 4th Blast fund to the Mound City News office or mail to 511 State St., PO Box 175, Mound City, MO 64470.

2011 4th Blast Donation List

Previous balance carried over from 2010= \$81.88

- Bill, Kitty, Sophie & Liv Richards - \$50
- Evelyn Sims - \$25
- Ken & Mary Lee Privett - \$50
- Empire District Gas Co. - Doug Kline - \$100
- Holt County Ready Mix - Bobby & Melissa Campbell - \$250
- Loren & Carla Markt - \$35
- Farmers State Bank - \$100
- Mound City Auto & Truck Repair - \$150
- Chase, Trent, Drew, Tage, Noah, Camry, Cooper & Wil Young - \$100
- Anonymous - \$8.12

Letter to the editor

Dear Editor,
Relay For Life of Holt County 2011 is FRIDAY! It has come upon us fast and my committees are working hard to get everything organized. Team Captains, remember the Silent Auction. Get a basket of goodies or any other item ready to bid on. We have a signed base-

ball by Tom Seaver donated by Dick Ottman and an original etched Relay mirror by Leo Oppenlander available for bids, so bring your checkbooks! It's all for a great cause...American Cancer Society helps our friends and neighbors far and wide.

We hope to see everyone Friday evening. The Opening Ceremony and Survivor Lap begin at 6 p.m.; and at 9 p.m. is the beautiful Luminaria Ceremony. There will be a ping pong ball drop at 7:30 p.m. and entertainment in between! We are Relay Ready!

Brynda Cotton Howell
2011 Chairman
816-387-3593

SENIOR GOLF
TUESDAY, JUNE 7
9:30 A.M.

Safe & Sound Bridge Program reaches halfway point

Fourteen new bridges opened to traffic last week, pushing the number of completed Safe & Sound Bridge Improvement Program projects past the halfway point.

There are now 410 new or rehabilitated bridges that have been constructed. When completed, the Safe & Sound program will have repaired or replaced 802 of the state's lowest rated bridges. Just this year alone, 80 new bridges have been built.

"We've really picked up the pace the last four months," Project Director Ken Warbritton said. "We're currently ahead of schedule and on track to finish a full year early. We could be finished by the end of 2012 instead of 2013, which was our original goal."

The first Safe & Sound project was completed on April 23, 2009. Since that time, the Missouri Department of Transportation-MoDOT has opened a new bridge every two days.



Mound City Kiwanis Club

The Mound City Kiwanis Club met at the United Methodist Church in Mound City, MO, on Wednesday, May 25, 2011, with 9 members and 1 guest present - Doug Kline.

Doug updated the club on the Mound City golf course. A total of 22 attended the Spouse Night Out at the Sportsman's Lodge in Bigelow, MO, on Sunday, May 22. Treasurer Dave Frede presented the two Kiwanis \$1,000 scholarships at the Mound City school assembly on Thursday, May 19, to James Schoonover and Prent Eaton.

Members discussed the possibility of preparing meals for Kiwanian Charlie Clodfelter and wife, Julie, when they bring their daughter home from Children's Mercy Hospital. The club donated \$200 to the Mound City Pool for "scholarships" for underprivileged swimmers for 2011 swim passes. The club paid \$400 for bus transportation for the Spotlight on Literacy After School Program this spring.

Kiwanis International is a global organization of volunteers dedicated to changing the world one child and one community at a time.

Chamberlain Funeral Home & Monuments
1705 Ridge Drive
Mound City, MO
442-5300

Notes from the Mound City Nutrition Site

Volunteers at the Nutrition Site in Mound City during the week of May 23, 2011, were: Addie Trimmer, Lela Boyd, Bill and Donna Golden, Kenneth and Irene Caton, Carolyn Roberts, Phyllis Ball, Walt and Pat Groves, Larry and Carol Brickey, Paul Rother, Michael Voltmer, Beverly Voltmer, Yogi Swymeler, Gailen Robbins, Ed Meng, Cindi Heck, Juanita Brickley and Bev Graham.

Delivering meals the week of June 6, 2011, will be:

Craig - Monday- Gene and Bev Miller; Tuesday and Wednesday- Walt and Pat Groves; Thursday and Friday- Open.

Mound City - Monday and Tuesday- First Christian Church; Wednesday - James Waller; Thursday and Friday - Concordia Lutheran Church.

Oregon - Monday through Friday- Woodville Presbyterian Church

Forest City - Monday- Yogi Swymeler; Tuesday- Open; Wednesday- Open; Thursday- Open; Friday- Open.

Winners of the bingo game on Friday, May 27, were Dorothy Kurtz, Florence Wheeler, Donna Golden, Bob Justus, Evelyn Haeffele and Ethel Neiderhouse.

The Mound City Nutrition Site has a dumpster in the parking lot to recycle bagged paper, bagged plastic and cardboard (broken down). The site also recycles cell phones, ink cartridges, aluminum cans for cancer (Helping Hand), and VHS tapes for MERIL (Independent Living). There are also drop boxes for donations for the food pantry; and labels and box tops for the school.

The May product of the month winner of a \$10 gift certificate is Jerry Zemles. The June products of the month are peaches in light syrup. The drawing will be June 30.

The site has had several

donations for the new exhaust hood and fire system. The site needs \$484 more to complete the payment. Donations are getting closer. The community's support has been great.

Upcoming activities at the Mound City Nutrition Site are:

June 6 - Exercises from 8:30 to 9:30 a.m.

June 7 - Walk at the football track, 8:30 a.m.

June 8 - Exercises from 8:30 to 9:30 a.m.

June 9 - Walk at the football track, 8:30 a.m.

June 10 - Cinnamon rolls and donuts, 8:30 a.m. until gone; Aging Resource Consultant, Wini Laber, at 11:00 a.m.

If anyone can volunteer with preparing or serving cinnamon rolls and/or donuts, please call Addie Trimmer at 660-442-5889.

The upcoming menu at the site is:

Monday, June 6 - Tator tot casserole, mixed vegetables, applesauce, lettuce salad and oatmeal raisin cookies.

Tuesday, June 7 - Sausage gravy on biscuit, sausage pattie, hash browns, juice and apple crisp.

Wednesday, June 8 - Turkey dressing casserole, mashed potatoes and gravy, green beans, fruit gelatin and hot rolls.

Thursday, June 9 - Meatloaf, baked potato, broccoli and applesauce bars with whipped topping.

Friday, June 10 - Fish portions, baked beans, coleslaw, apricots, corn bread and pasta salad.

Commercial PRINTING

Mound City NEWS
511 State
Mound City, MO
660-442-5423

FCCLA NATIONAL STAR EVENT FUNDRAISER

Sunday, June 12, 2011
12:00 - 1:30 p.m.

CHRISTIAN FELLOWSHIP CHURCH, MOUND CITY

Brisket/Pulled Pork, Cheesy Potatoes, Green Beans, Rolls, Assorted Salads & Desserts

FREE WILL DONATION



The Sportsman's Lodge

402 Rulo Street • Bigelow, MO 64437 • 660-442-5165

New Summer Hours:

Thursday - Saturday - Open Lunch & Dinner
Sundays - 11 a.m. - 2 p.m.

DINNER SPECIALS

- Thursday - Fried Chicken •
- Friday - Catfish • Saturday - Prime Rib •
- Sunday (11 a.m. - 2 p.m.) - Chicken Fried Chicken •

FRIDAY, JUNE 3

Live Music w/Phil VanDel 9 p.m.



New Summer Hours:
Thursday - Saturday - Open Lunch & Dinner
Sundays - 11 a.m. - 2 p.m.
Closed Monday, Tuesday & Wednesday
402 Rulo Street • Bigelow, MO 64437
660-442-5165

21st ANNUAL RED ROCK FUN RUN -- for all ages!

SPONSORED BY NORTHWEST HEALTH SERVICES

Monday, July 4, 2011 ~ 8:00 a.m.

5K (3.1 Miles) Run or Walk

Entry Fee: \$15 Paid before July 4th gets FREE T-Shirt

\$15 Paid on July 4th ~ No T-Shirt guaranteed

660-442-5464 - BACK THIS YEAR! - RACEDAY TIMING SOLUTIONS, DIGITAL CHIP TIMING!

Return completed forms & pick up route map at the Mound City Clinic
1303 State Street, Mound City, MO 64470 - 660-442-5464

---DETACH AND RETURN TO THE MOUND CITY CLINIC---

Name: _____

Age: _____ Sex: F or M

Address: _____ City: _____

State & Zip: _____

E-mail: _____ Phone: _____

Adult T-Shirt Size: (check one please) X-Large Large
 Medium Small Other

I hereby waive all claims against Northwest Health Services, Inc., NHS employees and anyone connected with the event from any and all responsibility regarding any injury that I may incur as a result of my participation in the 21st Annual Red Rock Fun Run. I understand that first aid will be made available, but Northwest Health Services is under no obligation to provide free medical treatment other than basic first aid (treatment of blisters, dehydration, heat, etc.).

SIGNATURE: _____

DATE: _____

Parent/Guardian (if under 18 years) _____

NO REFUNDS RACE BEGINS AT 8:00 A.M. SHARP!

LATE REGISTRATION JULY 4th FROM 6:30-7:30 A.M.

Fun Run starts and finishes in front of the OLD Mound City Clinic

LOCATED AT 502 STATE STREET, MOUND CITY.



Vera M. Thurnau

Vera Marie Thurnau, 90, Mound City, MO, died peacefully on Friday, May 27, 2011, at Golden Living Center in Maryville, MO.

Vera was born near White Cloud, KS, on November 11, 1920. She was united in marriage to Irvin Thurnau in 1942. Vera is survived by her children, Gary (Wanda) Thurnau, Lee's Summit, MO, and Linda (Mike) Burnsides, Mound City; four grandchildren, Susan, Jenny, Paula and Anthony; and eight great-grandchildren, Jessica, Jaden, Masyn, Maya, Cooper, Noah, Adam and Tyler. Vera is also survived by sisters-in-law, Erma Heits and Dorothy Lovelady.

In addition to being a loving wife and mother, Vera served nearly 40 years as the "Avon" lady in Craig and the surrounding area.

Vera was preceded in death by her husband, Irvin; her father and mother, Thurlow and Axie Lovelady; and three brothers, Harry, Marion and Harold Lovelady.

Services were held on Tuesday, May 31, at 2 p.m. at the St. John's Lutheran Church in Corning, MO. Services were conducted by Pastor Brian Lemcke. Burial was held at the I.O.O.F. Cemetery in Craig, MO.

Memorials may be directed to the Tri-Parish Lutheran Churches of Holt County, 1413 Nebraska Street, Mound City, MO 64470.

Craig R-3 to hold library program

The Craig R-3 School library will be open for Craig R-3 students to check out books this summer on Thursdays from 9:00 a.m. to 1:00 p.m. on the dates listed below. This year, story time will be held at 10:00 a.m. for the younger students and there will be a limit of two books per child per visit.

There will be treats, bookmarks, and stickers at each library visit. Miss Trudy Heitman hopes to see all students at the library this summer! Come join the fun!

Dates are: June 9th, 16th, 23rd and 30th; and July 14th and 21st. Note there is no summer library July 7th!

Your Full-Service Memorialist Since 1935

- Monuments
- Markers
- Mausoleums
- Plaques
- Lettering
- Cleaning
- Custom Designing

Van Vickle Monuments

1717 Frederick St. Joseph Toll Free 1-877-232-5882

Lyle E. Derr

Lyle E. Derr, 72, of St. Joseph, MO, passed away on Monday, May 30, 2011, at a St. Joseph, MO, hospital. He was born on August 25, 1938, in New Point, MO, the son of Thomas Elwood and Anita Eileen (Anderson) Derr.

Lyle graduated from Oregon High School in 1956, and attended Maryville State Teachers' College in Maryville, MO.

Survivors include Lyle's wife, Linda, of their St. Joseph home; son and daughter-in-law, Brett and Anna Derr, Oregon, MO; daughter, Shelly Graupman, Forest City, MO; stepson, Aaron Luce and his wife, Kelly, Oregon; stepdaughter, Donna and her husband, Aaron Taylor, Kansas City; brothers and sisters-in-law, Keith and Patricia Derr, Maysville, MO, and Noel and Genie Derr, Parkville, MO; sister, Nina Stucky, Las Vegas, NV; six grandchildren; and nieces and nephews.

Lyle was preceded in death by his parents.

Lyle enjoyed working, and was a surveyor for ASCS. He then worked at Dugdale's Packing House for several years. He farmed and operated heavy equipment in Holt County and throughout northwest Missouri.

Lyle retired as Chief Master Sergeant with the Missouri Air National Guard, after serving 39 years. He was a member of the St. Paul United Methodist Church in St. Joseph, and had previously served on the South Holt School Board.

Memorial services with military rites will be at 9:00 a.m., Thursday, June 2, 2011, at the Oregon United Methodist Church in Oregon. A private family inurnment will be held at the Maple Grove Cemetery in Oregon.

Memorials can be directed to the T.J. Hall Building in Oregon or Butterfield Youth Services, Marshall, MO. Friends and neighbors can sign the register book at the Chamberlain Funeral Home in Oregon, or leave online condolences at www.chamberlainfuneral.com.

CH-F serving up fun at the Kids' Cafe

How do I convince my child to eat his vegetables? Many parents ask this question and Community Hospital in Fairfax, MO, has the answer! Find recipes that hide vegetables in foods that your children already love, teach them how to spot healthy foods in the grocery store and let them have fun in the kitchen, all in one place!

Community Hospital-Fairfax (CH-F) is hosting a free "Kids' Cafe" event at the Tarkio Community Building in Tarkio, MO, on Tuesday, June 7, 2011, beginning at 5:00 p.m.

Hospital representatives are cooking up the ultimate event that will teach kids healthy ways to eat, prepare meals and have fun in the kitchen!

Kids can take part in cooking demonstrations, do-it-yourself recipes, and shopping how-to lessons. After visiting the cafe, participants are invited to a "Kids' Cafe" pool party at the Tarkio Pool! If the pool is not open, a voucher will be provided for a later date.

Children ages 3 and up are welcome to participate. Parents are asked to accompany children and are invited to participate in the "Deceptively Delicious" cooking demonstration just for parents.

Wilma M. Kneale

Wilma Maxine Kneale, age 97, passed away on Monday, May 30, 2011, at her home on Redbud Road, Jasper, MO. Wilma was born in 1913, one mile north of Maitland, MO, on a farm, to Dillard and Ida (Younger) Meadows. When a small child, Wilma's parents moved eight miles north of Mound City, MO.

Wilma graduated from Mound City High School. She had two sisters, Lora Offenbacher of Savannah, MO, and Ruth Wright of Tarkio, MO, both of whom are deceased. Wilma was married to Leonard Kneale of Maitland, MO, on March 3, 1936, at the Presbyterian Church in St. Joseph, MO. He passed away on June 9, 1980. They had two children, Patricia Jessen of Clinton, IA, and Dean Kneale, deceased.

Wilma is survived by four grandchildren, Brent Garrett of Maple Grove, MN, Tauna (Tom) Frieden of Lamar, MO, Heather (Richard) Dennis of Davenport, IA, and Misha (Steve) Smith of Jasper; and six great-grandchildren, Jason and Justin Frieden, Payton and Regan Smith, and Matthew and Brian Dennis. Kyle Dennis is deceased. Also surviving is a daughter-in-law, Cheryl O'Neal, of Webb City, MO.

Wilma and Leonard bought a farm southwest of Jasper in 1945. Wilma was a member of the Bethany Christian Church. She was a self taught artist and a member of the Spiva Arts Center in Joplin for many years. She was an excellent cook in her younger years and was also a member of Cedar Bluff Community Club for many years.

Funeral services will be held at 2:00 p.m. Friday, June 3, 2011, at Weng Funeral Chapel in Jasper. Burial will be held in Paradise Cemetery south of Jasper. Memorial contributions can be made to Bethany Christian Church or the American Cancer Society in care of Weng Funeral Chapel. Arrangements are under the care and direction of Weng Funeral Chapel.



Pictured above- Handing out popsicles to the Mound City Elementary students are, right to left, Lois Woods and Lucyle Benne on Tuesday, May 24.

News from Tiffany Heights

Residents enjoyed playing the "Name Game" on Monday, May 23, at Tiffany Heights in Mound City, MO. This month they chose the words Older American Month in honor of National Nursing Home Week. The residents were able to make 320 different words using these letters. This beat the old record of 250.

Tuesday morning, several residents took a trip to the ball park. This was the last day of school and the residents enjoyed the outing as well as handing out popsicles to all the elementary children. The residents enjoyed the children so much this year. Popsicles were also sent to the preschool, middle school and high school students. The residents hope the students have a wonderful summer. Residents enjoying the trip were Ilene Hendrix, Mary Lou Nauman, Lois Woods, Ruth Jordan, Lucyle Benne, Emma Jones and Alice Myers.

The long weekend was coming as well as the first of the month. Residents played games and enjoyed the afternoon of reading and visiting. As the month draws quickly to an end, the residents enjoyed playing a word game. The game started with flowers and a list of scrambled words. With a little cueing, the residents got all of them correct. Residents were given a picture of a flower to view and were asked to name it if they could.

Birthday bingo was held on Thursday afternoon. The Christian Fellowship Church provided the bingo prizes and the birthday party for all the residents. Those residents having May birthdays were Helen Hatch, Alberta Linck, Eleanor Seitz and Lois Woods. Assistants from the church were Chandler, Courtney, Hunter and Danielle Gordon; Lydia, Cameron, Garrett and Loretta Sheldon; Ruth Johnson; and Nida Messick. Additional volunteers were Barbara Hanlon, Wendy and Austin Kimble and Barney Bledsoe.

Residents enjoyed a van ride during the afternoon on Friday. The residents like

to call it a memorial ride as they enjoyed visiting their family members and friends that have passed. This is also a time to remember some of the great times they had together. The residents toured Mount Hope and the Maitland cemeteries. Along the way, they stopped at Lent's Flower

House and looked for plantings for their next project. Those residents enjoying the ride were Ruth Jordan, Lois Woods, Arnold Rehm, Ruth Andes, Alois Wilkinson and Mary M. Crain.

Sunday morning services were provided by Larry Brickley and family.

PUBLIC NOTICE
CRAIG RESIDENCES
Helping others as we have been helped!

The Mayor and Board of Aldermen of the City of Craig would like to challenge other communities in our area to step up and see what we can do to help Joplin try to recover from their recent devastation.

Craig has established a fund with \$500 and is asking our citizens to do what they can to assist in helping with Joplin's tragedy. We all should remember the Great Flood of '93 and the help that poured into our community from all over the U.S.

Donations accepted until June 6th at Craig City Hall. Every little bit helps, so do what you can. Contact City Hall with any questions at (660) 683-5412.

Make this a Memorial Day of giving.
Mayor Candi Whetsel and Board of Aldermen

Donate to the victims of the Joplin, MO, Tornado

Milne Seed, LLC, is collecting the following items:

- Bottled Water
- Baby Formula • Baby Food
- Toiletry Items (Shampoo, Soap, Toilet Paper)
- Non Perishable Food That Does NOT Need To Be Cooked
- Duct Tape
- Rubbermaid Storage Tubs

Items will be collected through June 6th at the seed warehouse and shipped to the Central Christian Center in Joplin.

For more information, please contact Milne Seed, LLC, or Erin Dinsdale at 816-510-7139.

Milne Seed, LLC
 Oregon, MO

Travis Milne 816-390-4611
Troy Milne 816-261-9723

Garst **syngenta.**

A special thanks to BT Limited of Highland, KS, for donating the trucking.

Kurtz Rural Aviation
 N 40° 08 52' W 095° 14 45'

Is Now Offering Aerial Application of Dry Nitrogen Fertilizer

Contact Garold at
 660-442-5611 (Office) 660-442-6282 (Cell)
 or e-mail us at: kurtzav@embarqmail.com

Area Church Information

BIG LAKE

Big Lake Baptist Church
213 Lake Shore Dr. • Dick Lionberger, Pastor
Sunday School, 9:30 a.m.
Worship, 10:30 a.m.

CORNING

St. John's Lutheran Church
112 Walters Street
Worship Service, 10:30 a.m.
Bible Class or Sunday School, 9:15 a.m.

CRAIG

Craig Presbyterian Church

Worship Service, 9:15 a.m.

Sharp's Grove United Methodist Church
4.5 mi. north of Craig on Hwy. 59 • Rev. Crystal Karr
Worship Service, 8:45 a.m.

Craig Community Church of the Nazarene
105 S. Ensworth Street • Keith Knaak, Pastor
Sunday School, 10 a.m., Worship Service, 11 a.m.
Wed. Night Bible Study, 5:30 p.m., Wed. Kingdom Kids, 3:30-5:00 p.m.,
Wed. Night Youth Group, 6:30-8:00 p.m.

Church of God
Sunday School, 10:00 a.m., Worship, 11:00 a.m.

St. Peter's Lutheran Church
Closed- Worship at St. Johns Lutheran Church in Corning and
Concordia Lutheran Church in Mound City

FILLMORE

The Lighthouse
Exit 65 on I-29 • Pastors Tim and Faith Uzzle
Sunday Worship: 10 a.m., Thurs. Bible Study: 7 p.m.
www.fillmorelighthousechurch.org

GRAHAM

Graham Union Church
Sunday School, 9:30 a.m., Morning Worship, 10:30 a.m.
Evening Service, 6:30 p.m., Wednesday night, 7 p.m.

United Methodist Church
Connie Ury, Pastor
Sunday School, 9 a.m., Worship, 10:15 a.m.

MAITLAND

First Christian Church
4th and Ash • Bill Gazaway, Pastor
Sunday School, 9:15 a.m., Worship Service, 10 a.m.
Sunday Night Worship, 7 p.m., Wed., Youth Rallies, 7 p.m.

United Methodist Church
217 S. Maple Avenue • Connie Ury, Pastor
Worship Service, 9 a.m.

MOUND CITY

Community of Christ
1410 Nebraska Street • Theresa Mackey, Pastor 660-446-2048
Sunday School, 10 a.m., Worship Service, 11 a.m.

Christian Fellowship
18080 Hwy. 59 • Jim Brown, Minister
Sunday School, 9:30 a.m., Worship, 10:30 a.m.
Senior High Youth, 7:00 p.m. • www.christian-fellowship.net

Concordia Lutheran Church
Worship Service, 9:00 a.m.
Bible Class or Sunday School, 10:15 a.m.,

First Christian Church
402 E. 5th Street • Paul Grant, Pastor
Sunday School, 9:30 a.m., Worship, 10:30 a.m.

Mound City Baptist Church
1308 Savannah Street • Pastor James Waller
Sunday School, 10:15 a.m., Worship Service, 11:15 a.m.
Tuesday Bible Study, Larry Brickey, 6:30 p.m.;
Sl@m City Youth Group, 6:30 p.m. - 816-616-0347

Mound City United Methodist Church
312 E. 7th St. • Pastor Crystal Karr
Sunday School, 9 a.m., Sunday Service, 10 a.m.

New Liberty Baptist Church
County Road 140 • Dr. Everett Walden, Pastor
Sunday School, 9:45 a.m., Worship, 10:30 a.m.

New Life Apostolic Assembly
U.P.C.I. - 307 E. 6th, Mound City • Pastor Scott Jordan
Worship Service, 11 a.m.
Life Night Bible Study & Revolution Youth Group
Thursdays, 6:30 p.m.
www.newlifeapostolicassembly.org - 660-442-3441

OREGON

St. Patrick's Catholic Church
303 Grand, Forest City • Father Peter Ullrich, OSB
Pastor and Parish Administrator

Oregon Church of the Nazarene
207 W. George • Keith Knaak, Pastor
Sunday School, 8 a.m., Worship Service, 9 a.m.

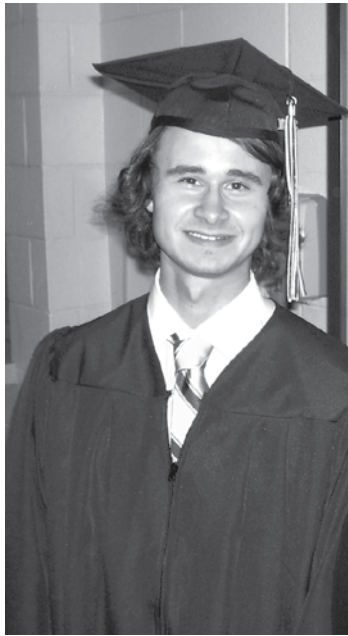
New Point Christian Church
24135 Stone Hill Rd. • Brian Buck, Minister
Sunday School, 9:30 a.m., Worship, 10:30 a.m.
Fellowship Dinner, 4th Sunday of month following church

REGIONAL

River of Hope Fellowship
Presently meeting at: 304 East 4th St., Mound City
442-0197 or 442-6305 • Pastor David Showalter
Sunday School, 9:15 a.m., Worship, 10:30 a.m.

SKIDMORE

St. Oswald's-in-the-Fields Episcopal Church
30996 X Avenue, Skidmore, MO
2nd Sundays - 11 a.m., Morning Prayer service by Lay Reader
4th Sundays - 11 a.m., Eucharist Service



Scott Hughes

Hughes receives nursing degree

Scott Hughes graduated Saturday, May 14, 2011, with his Bachelor of Science Nursing degree from Missouri Western State University in St. Joseph, MO. Scott is the son of Jane Ball Hughes, St. Joseph, formerly of Mound City, MO, and the grandson of Phyllis Ball and the late Marion Ball, Mound City.

Scott plans to pursue an RN position in a hospital setting following completion of his board exams this summer. Pinning and graduation ceremonies held on the MWSU campus were attended by Jane Ball Hughes and Greg Hughes, St. Joseph, and Phyllis Ball, Mound City.



Carly Edwards graduates with Master's Degree

Carly Edwards of Mound City, MO, graduated with a Master of Science in Elementary Education/Curriculum Instruction from the University of Central Missouri in Warrensburg, MO, on Friday, May 6, 2011.



Greg Hughes

Hughes graduates Summa Cum Laude

Greg Hughes of St. Joseph, MO, graduated Summa Cum Laude, Doctor of Pharmacy, from UMKC School of Pharmacy in Kansas City, MO, on Saturday, May 7, 2011. Greg has accepted a pharmacist position with CVS Pharmacy in St. Joseph and will assume his duties there in August. Greg is the son of Jane Ball Hughes, St. Joseph, formerly of Mound City, MO, and the grandson of Phyllis Ball and the late Marion Ball, Mound City.

Hooping ceremonies held at UMKC campus were attended by Scott Hughes, Jane Ball Hughes and Gary Clark, St. Joseph; Phyllis Ball, Mound City, MO; Steve Ball, Des Moines, IA; and Dr. Alisa Cahill, Overland Park, KS.

Nolands welcome home baby boy

Jared and Carrie Noland of Oregon, MO, are proud to announce the birth of their son, Kameron Donald Noland. Kameron was born on Tuesday, May 3, 2011, at 7:31 a.m. at Heartland in St. Joseph, MO. He weighed 10 pounds, 6 ounces, and measured 23 inches long. Kameron is welcomed home by his brothers, Kendall and Kyler Noland.

Maternal grandparents are Donald and Geneva Tubbs of Bigelow, MO. Paternal grandparents are Kelton and Susan Noland of Oregon. Paternal great-grandparent is Floris Wheeler of Oregon.



Alex and Jackie Hamilton

Hamiltons to celebrate 40th wedding anniversary

Alex and Jackie (Dearmont) Hamilton are celebrating their 40th anniversary. They were united in marriage on June 18, 1971, in Mound City. They have retired and are enjoying fishing, gardening, family and friends.

Cards may be sent to the honorees at 409 SW Warns, Lees Summit, MO 64063.



Jeffery Blazer and Lee Ann Blevins

Blazer and Blevins to wed June 18

Lee Ann Blevins and Jeffery Scott Blazer announce their engagement and approaching nuptials. The bride is the daughter of Vicki Book of Oregon, MO, and Lee Blevins of Mound City, MO. The groom is the son of Rexann Blazer of Oregon and Scott Blazer of Maitland, MO.

Lee Ann is a 2006 graduate of South Holt High School and a 2010 graduate of Northwest Missouri State University with a Spanish degree and Psychology minor. Lee Ann is currently employed at Citizens Bank and Trust in St. Joseph, MO, as a Bilingual Financial Services Representative. Jeffery is a 2007 graduate of Mound City High School and is currently employed at Herzog

Railroad Services in Falls City, NE, as a welder.

The wedding will be held Saturday, June 18, 2011, at the United Methodist Church in Oregon at 5:00 p.m., with the reception following the ceremony at the T.J. Hall Building, also in Oregon. Family and friends are invited to attend.



Billie Heck to celebrate 90th birthday

Billie Heck will celebrate her 90th birthday on Monday, June 13. She was born in Humboldt, NE, to Bill and Mary Bahl. In 1936, Billie's family moved to Mound City. She graduated from Mound City High School. After graduation, she worked for Dr. Lisbona and then moved to Omaha, NE, to work at Mutual of Omaha.

In 1943, Billie married Dean Heck. They lived in several places in the southwest U.S. while Dean was in the U.S. Army. In 1949, they returned to Mound City to farm and raise a family. Dean passed away in 2007. They have two children, Don Heck, Fountain Hills, AZ, and Debbie Friend, Lewisville, TX.

Cards may be sent to the honoree at 2103 Amherst Dr., Lewisville, TX 75067.

Down On The Farm Primitive Sale

Saturday, June 18
8:30 a.m. - 5 p.m. (rain or shine)

Vendors Selling Handmade Items, Primitives,
Antiques & Furniture
Red, White, and You
28969 Hwy. 159 • Forest City, MO
1 1/2 Miles E. Of Squaw Creek Truck Plaza

Athletic Or Casual Diabetic Shoes

We offer Apex OR Dr. Comfort athletic or casual style shoes. The qualified diabetic patient is allowed one pair of diabetic shoes and three pairs of orthotic insoles per calendar year.



Diabetic Supplies

- Contour Strips
- Breeze 2
- One Touch



- Freestyle
- Accu-chek

Let us fit you with your next pair of shoes at Rogers Pharmacy Home Medical Equipment.



Rogers Pharmacy

Home Medical Equipment
Tarkio • Mound City • St. Joseph
www.rogersrx.com

607 State Street • Mound City, MO
660-442-3355 • Toll Free 800-962-0096



Memorial Day garage sales

Mound City held its annual city-wide garage sale- On Monday, May 30. This large tent that held a plethora of children's fare was seen along View Drive. The tent survived the windy weather and many items were snatched up by eager buyers.



FCCLA hosts garage sale

Nodaway-Holt STAR Event FCCLA members- Took advantage of a fundraising opportunity by setting up at the city-wide garage sale in Mound City on Monday, May 30. The group of six girls will be attending the national FCCLA event in Anaheim, CA, in July. The group raised nearly \$800 during the day which was added to the \$700 that they made at a garage sale in Maryville, MO, earlier in May.

Community band ready to organize

The Community Band that performs in Griffith Park in Mound City during Mound City's 4th of July celebration will begin rehearsals on Sunday, June 12. Rehearsals will be held in the Mound City School from 2:30 p.m. to 4:00 p.m. Three rehearsals are planned: June 12, June 26 and July 3.

This is the 13th year for the band. Response has been very good during the band's duration, and the group is open to anyone interested in playing. Musicians need to contact conductor, Dave Holland, at 660-442-5409 if desiring to play in this year's event.

The concert is sponsored by the State Theater Arts Council and the Kiwanis. This is the first Arts Council event for the 2011-2012 season.

Hamburger Soup

By Julia Gilland

- 1 lb. ground beef
- 1 c. chopped onions
- 1 c. cubed raw potatoes
- 1/2 c. diced celery
- 5 tsp. salt
- 1 1/2 qt. water
- 1 c. shredded cabbage
- 1 c. tomatoes
- 1 small bay leaf
- 1/2 tsp. dried thyme
- 1/2 tsp. basil
- 1/2 tsp. pepper

Saute hamburger and onion until lightly brown. Drain surplus fat. Add all ingredients and simmer in crock pot until vegetables are done.

Services begin again at **Benton Church** Sunday, June 5 10:00 a.m. (Thereafter, every first Sunday of the month) **Greg Book, aka Grady Rivers, to lead song worship** Located 1/2 mile south of Eagle Nest Truck Plaza on Hwy. BB

This Week's History

From the Mound City News archives

50 Years Ago - 1961

- The Mound City City Pool held its grand opening with Mayor Don Hall giving a short dedication address. City council members, John Buner, Howard Clemens, Loyd Jackson and Charles Scarbrough, and swimming pool board members, Ken Privett, Bob Crouse, Garth Sharp, Roy Sims, Jr., and James Schoonover, applauded the major civic improvement.

- The old Hiatt Hotel, which was over 125 years old and the oldest building in Mound City, was being destroyed and a new modern post office building was being built on the site where, originally, a night's lodging was \$.25 and meals were only \$.25.

- The Holt County Balanced Farming Association prepared to offer its first farming tour of the season. Included was a visit to the Hillside Dairy Farm of Raymond and Alvin Biermann four miles northwest of Mound City, followed by the farm of Mr. and Mrs. Alfred Ideker, near Craig, MO.

- Mary McQueen, Craig-Starview 4-H; Kay Hollenbeck, Mound City Highlander 4-H; Steven VanVickle, Mound City Shiloh 4-H; Bill Cooksey, Oregon-New Point 4-H; and Robbie Atkins, Oregon-Sunrise 4-H, attended the 4-H Club Week at the University of Missouri-Columbia.

25 Years Ago - 1986

- The 50th anniversary of the Civilian Conservation Corps and the Squaw Creek Wildlife Refuge celebrated with an official observation. A souvenir tabloid was available and a commemorative plaque was donated at the refuge.

- Youth YCC enrollees for the summer were Derek Guthals, Jennifer Thomas, Kerry Heck, Bonnie Rauch, Arlene Carroll, Lori Sipes, Corey Hutton, Kevin Blazer, Jeff Oliver, Terry Calhoun and Danny Klassmeyer.

- Northwest Health Services announced that Dr. S. Chavala, M.D., an ophthalmology specialist, would be opening a branch office in the Mound City clinic.

- The 2nd annual All-Star Senior Basketball game was held at Northwest Missouri State University. Kelly Sportsman and Sherry Groves of Nodaway-Holt and Chuck Pendleton of Mound City were local players.

- Vandalism to the Forest City Depot resulted in damage to two window air conditioners.

10 Years Ago - 2001

- Galaxy changed its name to Cable Direct and was working to convert Mound City customers to DirecTV Satellite Service.

- A planning meeting organized by Holt County Commissioners and funded by a \$10,000 Health Communities Grant was held and was the first big step in coming up with a long-range plan for the county. With the county's population being over 17,000 in 1900, declining population was a concern.

- Bank swallows made their annual spring return to Holt County after wintering in South America. The birds use their bills and feet to dig 2-3' into Loess Bluff along Highway 159.

- The Holt County Hookers and the Mound City Kiwanis Club awarded trophies in 18 divisions at a garden tractor pull held at the Mound City rodeo grounds.

- American Legion members held services at area cemeteries from Rock Port to Mound City. Lt. Col. Scott Chamberlain spoke about the heroism of those who died while serving in the military.

Mound City Public Library's
One World, Many Stories
Summer Reading Program presents
Junie B. Jones Strikes Again
Wednesday, June 8th, at the State Theater in Mound City
Starts at 2:00 p.m.

Who could forget that first and second grade sensation, Junie B. Jones, and all her wacky adventures?! What great news, Junie B. is coming to town! Junie B. will be traveling to us all the way from Overland Park, KS. She's overjoyed to be taking us on a special journey! Come out and join us on June 8th as we venture off into wonderful imaginations!
Funded by an IMLS Grant

Hullman's 1416 Harlan St. Falls City, NE
Ford • Lincoln • Mercury 402-245-4413 800-433-5891
Have we got a deal for you!

2012 Ford Focus
4-Door Sedan SE ~ 38 MPG
MSRP \$19,485 -\$500 (Rebate)
\$18,985

Great LOW Prices!!
www.hullmansford.com

AMERICAN POWER. AMERICAN PRIDE.
Oreck®, an American success story, is proud to announce our NEW Pro Series Power Teams - more advanced, more durable, more Oreck.

NEW Pro Series Power Teams:
• **Lightweight:** 10 lbs. or less*
• **Powerful:** 102 mph airflow at the floor
• Deep cleaning rollerbrush spins at up to 6,500 rpm**
• Ergonomic Helping Hand® Handle

• **FREE** Handheld Vac for above the floor messes
• Hypo-allergenic HEPA quality filtration
• **Variable features:** Up to 10-yr limited warranty† and 10 free tune-ups**
*Approximate weight without cord.

Try a Pro Series Power Team today with our 30 day risk-free trial. If you don't love it, you don't keep it.

BUY 2 cleaning products GET 1 FREE

VACUUMS STARTING AT \$199 - UPRIGHTS ONLY.

ORECK
AUTHORIZED DEALER

2605 South Main Street Maryville, MO
660 582-2815
Hours: Mon. - Fri. 9 AM to 6:30 PM, Sat. 9 AM to 6 PM

BEST BRANDS PLUS

Holt County real estate transfers

David L. Christie to Michaele A. Christie, Falls City, NE; All of Lot 7 in Holstine's 3rd Addition in the Village of Big Lake.

Wayne A. Johnson Trust, by trustee, and Twyla R. Johnson, by trustee, to Jon C. Snethen and Rita Seid, Falls City, NE; All of the North 60 acres of the East Half of the Northeast Quarter of Section 16, Township 62, Range 40 West of the 5th P.M., see record for full description.

Ray A. Morris Trust, by successor trustees, to Ram Farms, Inc., Oregon, MO; Beginning at the Southwest corner of the Northeast Quarter of Section 29, Township 62, Range 39, see record for full description.

Margaret V. Morris Trust, by successor trustees, to Ram Farms, Inc., Oregon, MO; Beginning at the Southwest corner of the Northeast Quarter of Section 29, Township 62, Range 39, see record for full description.

Loren Markt and Carla Markt to Richard D. Markt and Merrilee A. Markt, Oregon, MO; Commencing at the center of Section 7, Township 59 North, Range 38 West; thence along Quarter Section Line, South 89 degrees 43 minutes 15 seconds West 1,705.66 feet to the centerline of Holly-Cannon Creek, see record for full description.

Richard D. Markt and Merrilee A. Markt to Loren Markt and Carla Markt, Oregon, MO; Commencing at the center of Sec-

tion 7, Township 59 North, Range 38 West; thence along Quarter Section Line, South 89 degrees 43 minutes 15 seconds West 1,705.66 feet to the centerline of Holly-Cannon Creek, see record for full description.

Allen Nauman to Bryan R. Markt, Maitland, MO; Tract 1: Commencing at the North Quarter corner Section 30, Township 60 North, Range 38 West, see record for full description. Tract 2: Commencing at the North Quarter corner Section 30, Township 60 North, Range 38 West, see record for full description.

Glenn Rex Reynolds and Gail J. Hagans-Reynolds, by attorney in fact, to Lyle Derr Farm Co., St. Joseph, MO; Commencing at the Center of Section 30, Township 60 North, Range 38 West, see record for full description.

Mark J. Roselli Trust, by trustee, and Rebecca J. Roselli Trust, by trustee, to Jared A. Rauch and Kari L. Rauch, Oregon, MO; The Southwest Quarter of the Northeast Quarter of Section 29; and also commencing at the center of Section 29; thence running South 84 3/4 degrees West, 3.83 chains to the East Line of Herrin's Addition to the town of Forbes, see record for full description.

Kirby L. Rosier Trust, by trustee, to Gage Davis

Rosier, Mound City, MO; The Northwest Quarter of the Northwest Quarter of Section 9, Township 62, Range 39 in Liberty Township in the Village of Big Lake.

Kim J. Rosier Trust, by trustee, to Gage Davis Rosier, Mound City, MO; The Northwest Quarter of the Northwest Quarter of Section 9, Township 62, Range 39 in Liberty Township.

Kirby L. Rosier Trust, by trustee, to Cole Lee Rosier, Mound City, MO; The Southwest Quarter of the Northwest Quarter of Section 9, Township 62, Range 39, in Liberty Township.

Kim J. Rosier Trust to Cole Lee Rosier, Mound City, MO; The Southwest Quarter of the Northwest Quarter of Section 9, Township 62, Range 39, in Liberty Township.

Kirby L. Rosier Trust to Dylan Brock Rosier and Lauren Elizabeth Rosier, Mound City, MO; The Southeast Quarter of the Southwest Quarter, except a tract of land 25 ft. x 25 ft. in the Southwest corner in Liberty Township.

Kim J. Rosier Trust to Dylan Brock Rosier, Mound City, MO; The Southeast Quarter of the Southwest Quarter, except a tract of land 25 ft. x 25 ft. in the Southwest corner in Liberty Township.

First United Presbyterian Church of Mound City to New Life Apostolic Assembly, Inc., Mound City, MO; All of Lots 8, 9 and 12 in Block 27 in the original town of Mound City.

Holt County traffic violations

The following traffic violations that occurred in Holt County were paid through the Missouri Judiciary Fine Collection Center:

Jordan T. Ashlock- Of St. Joseph, MO, Pursuing/Taking/Killing/Possessing Or Disposing Of Wildlife Illegally. Case filed on December 6, 2010. Case disposed on May 20, 2011. Fine Amount \$24.50.

George Franklin Barker- Of Mound City, MO, Driver/Front Seat Passenger 16 y/o or Over Fail to Wear Properly Adjusted/Fastened Safety Belt. Case filed on May 18, 2011. Case disposed on May 24, 2011. Fine Amount: \$10.00.

Drew Miller Batten- Of Mountain Home, ID, Exceeded Posted Speed Limit (Exceeded By 20-25 Mph). Case filed on April 27, 2011. Case disposed on May 23, 2011. Fine Amount: \$155.50.

Tsoggerel Bayarsaikhan- Of Omaha, NE, Exceeded Posted Speed Limit (Exceeded By 11-15 Mph). Case filed on April 21, 2011. Case disposed on May 20, 2011. Fine Amount: \$55.50.

Dudley Glenn Bell, Jr., - Of Dallas, TX, Exceeded Posted Speed Limit (Exceeded By 20-25 Mph). Case filed on May 5, 2011. Case disposed on May 24, 2011. Fine Amount: \$155.50.

Yong Jung Chang- Of Skokie, IL, Exceeded Posted Speed Limit (Exceeded By 11-15 Mph). Case filed on May 17, 2011. Case disposed on May 25, 2011. Fine Amount: \$55.50.

Jacqueline Coughlin- Of Papillion, NE, Exceeded Posted Speed Limit (Exceeded By 16-19 Mph). Case filed on April 28, 2011. Case

disposed on May 23, 2011. Fine Amount: \$80.50.

Deron R. Davis- Of Hickman, NE, Failed To Display Plates On Mtr Veh/Trl. Case filed on April 17, 2011. Case disposed on May 19, 2011. Fine Amount: \$30.50.

Brandee Lee Dieter- Of Jacksonville, FL, Exceeded Posted Speed Limit (Exceeded By 16-19 Mph). Case filed on April 26, 2011. Case disposed on May 22, 2011. Fine Amount: \$80.50.

Richard Michael Fields- Of Parkville, MO, Exceeded Posted Speed Limit (Exceeded By 11-15 Mph). Case filed on April 30, 2011. Case disposed on May 20, 2011. Fine Amount: \$55.50.

Taylor Rene Jestes- Of Mound City, MO, Driver/Front Seat Passenger 16 y/o or Over Fail to Wear Properly Adjusted/Fastened Safety Belt. Case filed on April 16, 2011. Case disposed on May 19, 2011. Fine Amount: \$10.00.

Lonna Lee Lenz- Of Sergeant Bluff, IA, Failed To Drive On Right Half Of Rdwy When Rdwy Was Of

Sufficient Width, Causing An Immedite Threat Of Accident. Case filed on March 18, 2011. Case disposed on May 20, 2011. Fine Amount: \$30.50.

Stuart Jason Pallen- Of Kansas City, MO, Exceeded Posted Speed Limit (Exceeded By 11-15 Mph). Case filed on April 16, 2011. Case disposed on May 19, 2011. Fine Amount: \$55.50.

Keith D. Rebel- Of Rock Port, MO, Pursuing/Taking/Killing/Possessing Or Disposing Of Wildlife Illegally. Case filed on November 17, 2010. Case disposed on May 21, 2011. Fine Amount \$24.50.

Jeremy A. Wiczorek- Of Omaha, NE, Exceeded Posted Speed Limit (Exceeded By 20 Mph or More). Case filed on April 4, 2011. Case disposed on May 23, 2011. Fine Amount: \$155.50.

Douglas James Wiederrich- Of Blue Springs, MO, Exceeded Posted Speed Limit (Exceeded By 11-15 Mph). Case filed on May 17, 2011. Case disposed on May 25, 2011. Fine Amount: \$55.50.

Work planned on Interstate 29 in Atchison County

The Missouri Department of Transportation (MoDOT) has announced that portions of Interstate 29 have been scheduled for work which was scheduled to begin Wednesday, June 1, 2011 (weather permitting).

On Wednesday, June 1, MoDOT crews were to begin doing concrete replacement on the southbound driving lanes of Interstate 29 in Atchison County from mile marker 115 to mile marker 111 north of Rock Port, MO. Traffic is being diverted to

the passing lane while work is going on. The lane closure will continue through Friday, June 3.

On Friday, the Atchison/Holt Electric Cooperative will be closing all lanes (northbound and southbound) of Interstate 29 between Exit 110 and Exit 107 (the two Rock Port exits) for 20 minutes beginning at 9:00 a.m. to replace a power line.

MoDOT apologizes for any inconvenience these necessary closures may cause.



COMPARE AND SAVE

ASSUME CHOOSING A LOCAL COMPANY MEANS PAYING MORE? WRONG.

4 lines example	NORTHWEST MISSOURI CELLULAR	AT&T	Sprint
Nationwide Anytime Minutes	700	700	700
Family Texting	Unlimited	Unlimited	Unlimited
Cost per month (4 lines)	\$104.97	\$119.97	\$169.97
Carryover Minutes	YES	YES	NO
Incoming Texts Free	YES	NO	NO
Overage Per Minute	\$.20	\$.45	\$.45
Activation fee per line	\$0	\$36	up to \$36
Family Data Share option	Available	Not Available	Not Available
You Pay (annually)	\$1259.64	\$1439.64	\$2039.64

You save over \$800 / year

THE SAMSUNG GALAXY S SHOWCASE

Featuring a 5 MP camera with HD video, lightening fast 1GHz processor, and a crystal clear 4 inch multi-touch screen.

Certain terms and conditions may apply. Competitive plan information was taken on May 15, 2011, from the following Web sites: www.legis.att.com and www.sprint.com. This information is not intended to include or encompass all plan variations or any subsequent plan modifications. All prices listed are monthly or as a per transaction charge. Certain taxes, fees and restrictions may apply. All trademarks and trade names are the property of their respective owners. ©2011 Northwest Missouri Cellular. All rights reserved.

NORTHWEST MISSOURI CELLULAR

LEADING THE AREA IN COVERAGE, CUSTOMER SERVICE, COST & COMMUNITY INVOLVEMENT

1218 S Main Maryville | (660) 582-3334 | 1-800-331-6341 |
www.nwmc.com | www.facebook.com/nwmc
8-6 Monday-Thursday | 8-5 Friday | 9-2 Saturday



AGENT LOCATIONS

ALBANY: One 36 Realty & Owens and Sons | BURLINGTON JUNCTION: IAMO Telephone | GRANT CITY: Rural Missouri Insurance
MOUND CITY: Laukemper Motors & Midwest Data Center | OREGON: Oregon Farmers Mutual Telephone
ROCK PORT: Rock Port Telephone | STANBERRY: McCarty Farm Loan & Big 4 Hardware | TARKIO: Midwest Data Center

Nodaway, Atchison and Holt counties - Road improvements planned

The Missouri Department of Transportation (MoDOT) has announced that overlays and road improvements are being planned for the counties of Nodaway, Atchison and Holt this construction season. Please note that all work will be done during daylight hours and all roads will be opened to traffic during major holidays.

The first series of improvements will start on Wednesday, June 8, 2011 (weather permitting) on U.S. 136 in Atchison County. The project was awarded to Herzog Contracting in the amount of \$3,294,912.45. Improvements will include base widening, resurfacing and shoulder improvements from Route M to U.S. 71 near Burlington Junction (length: 11.91 miles). A pilot car will be used to direct traffic and flaggers will be present. Completion of this portion of the project is expected in early August. Herzog will then proceed with pavement marking and rumble strips on both the center and edge lines of the same section.

The following series of thin-lift overlay resurfacing improvements were awarded to Herzog Contracting in the amount of \$409,274.58 for the Holt County jobs; \$1,177,884.17 for the Atchison County jobs; and \$437,303.86 for the Nodaway County jobs. A pilot car will be used to direct traffic and flaggers will be present. The following will begin in late summer and will involve a thin-lift overlay (work will begin in Nodaway County, followed by Atchison/Holt Counties):

Nodaway County

- Route U from U.S. 71 to Route N through Arkoe (4.431 miles)
- Route CC, Business 71 from U.S. 71 east to MO 148 north of Maryville (1.03 miles)
- Route T from Conception Junction at Wabash St. to U.S. 136 (.64 mile)

Atchison/Holt counties

- MO 111 from Route E south to Route W in Corning (9.874 miles)

Atchison County

- Route C from U.S. 59 east to Route O in Westboro (8.086 miles)

Holt County

- Route E from U.S. 59 south to U.S. 159 (4.416 miles)
- U.S. 159 from U.S. 59 west to I-29 (3.192 miles)

For more information about these or other projects being handled by MoDOT, please call the toll-free customer service hotline at: 1-888-ASK-MoDOT (1-888-275-6636).



Route N bridge nears completion

Bridge work on Route N- Appears to be over halfway finished. The first bridge rebuilt on Route N is now complete as pictured above, but the second bridge, which is just a half mile away, is now being readied for removal. Construction could take up to six more weeks.

day, June 8, 2011 (weather permitting) on U.S. 136 in Atchison County. The project was awarded to Herzog Contracting in the amount of \$3,294,912.45. Improvements will include base widening, resurfacing and shoulder improvements from Route M to U.S. 71 near Burlington Junction (length: 11.91 miles). A pilot car will be used to direct traffic and flaggers will be present. Completion of this portion of the project is expected in early August. Herzog will then proceed with pavement marking and rumble strips on both the center and edge lines of the same section.

The use of non-traditional materials for crop production

Each year, there are products being sold in the market place making claims of increased yields. The North Central Regional - 103 Committee of the American Society of Agronomy are scientists that share, report and maintain a database of various non-traditional products to inform growers of university research. The database can be researched to determine if there is any scientific value to a particular product. The bottom line is, if a product sounds too good to be true, then it probably is. Often product claims are made to dramatically increase yields by providing additional nutrients, improving soil tilth, or other claims. Many products have been tested by universities and these will not continue to be repeated if there is data.

Secondly, look for unbiased research results. Many products are tested in land grant universities to determine if there is potential value. Scientific data is different from marketing data. Scientific data uses replications, randomization and statistics to analyze data. Product literature generally is used to sell products.

Next, try the product on a limited acreage in a simple comparison test that can be measured. It is recommended to use strips and replicate these. Splitting a field is a poor way to determine yield differences as the variability of the field may influence yields. Extension specialists

generally do not recommend products or practices that do not have a high degree of predictability or repeatability.

To find this information, the "Compendium of Research Reports on the Use of Non-Traditional Materials for Crop Production" is on the web. The report is quite large.

For more information, contact Wayne Flanary at 660-446-3724, or Heather Benedict at 660-425-6434, Regional Agronomists, University of Missouri Extension.

CH-F develops stroke readiness protocol

You have read about the symptoms of a stroke. You may even know someone who has suffered one, but if you started experiencing symptoms today, would you know exactly what to do?

Community Hospital-Fairfax, MO (CH-F), knows the importance of time in the event of a stroke. That is why it has developed a stroke response team. The team is educating the public about the life saving procedure administered at Community Hospital-Fairfax that may drastically decrease the impact of a stroke.

CH-F is hosting a Stroke Awareness Lunch Seminar on Wednesday, June 8, 2011, and 12:00 p.m. in the hospital conference room. The seminar will feature guidelines and information about the hospital's stroke protocol, as well as educate the public on the importance of a rapid response to strokes.

Emergency room nurse Becky Heits, RN, stresses the importance of getting help at the onset of stroke symptoms.

One of the most important things to know about stroke is to 'Act FAST' because for every 12 minutes treatment is delayed after a stroke, a pea-sized area in the brain dies," Becky said.

"Act FAST" is a way for people to remember what to do if they think they may be having a stroke. F stands for Face: Is your face drooping to one side? A for Arms: After raising both arms out to your side, does one arm fall? S for Speech: Is your speech slurred? T stands for Time, because the faster you get help, the better.

Becky wants the public to

know that not all symptoms need to be present before a person should seek help. She also stresses the importance of education and says that people should attend CH-F's Stroke Awareness Lunch Seminar because the effects of a stroke are "largely preventable" and the public can learn how through the educational program.

Aron Burke, MD, Chief of Medical Staff at Community Hospital-Fairfax, comments on Community Hospital-Fairfax becoming a "stroke ready" hospital.

"If it were up to us, everyone would stay healthy for life and no one would suffer from a stroke, but we will be ready for you if it does," Dr. Burke said.

The most important thing people need to know about stroke is that time is everything. Community Hospital-Fairfax is trained to administer Activase, a potentially life-saving stroke medicine, to patients suffering a stroke. The National Institute for Neurologic Disorders and Strokes states that this life-saving medicine requires rapid response and diagnosis. Through proper training and cooperation of all CH-F staff, the hospital is prepared to administer this medicine to stroke victims. The protocol has trained staff to evaluate the patient, notify the stroke team, initiate a CT scan and lab, interpret the results and administer the drug.

As Aron Burke, MD, said, "We are ready," if stroke happens. Are you? For inquiries about CH-F's stroke event, please contact the Development Office at 660-686-2317.

Joplin relief trip planned

River of Hope Fellowship in Mound City is planning a second trip to Joplin, MO, to assist with the cleanup efforts after the tornado that destroyed a large portion of the town on May 22.

Last week, the church was privileged to send nearly 10 sets of hands and funds to Joplin to help with the relief efforts. The church is planning an even larger group to help and is asking for volunteers.

The church is organizing a group from Northwest Missouri and Southeast Nebraska to bring 50 volunteers to the area to help the week of June 13-18. Volunteers are asked to sign up for any or all of the six days that are being planned. Church offi-

cials are asking that the volunteers stay a minimum of two consecutive days. They are wanting to organize the volunteer list in such a way as to have 50 sets of hands laboring during the entire trip.

Volunteers are responsible for their own transportation and will be housed at a church in Carthage, MO. Food and lodging will be provided, but a charge of \$10 per person per night is required.

Persons interested in this WORK trip, with the purpose of helping and encouraging the people of the Joplin community, can call the church office in Mound City at 660-442-0197.

1st Class Carports, Sheds & Garages



REGULAR STYLE



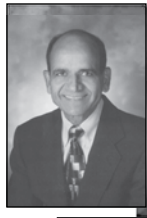

ARCH STYLE



BOX EAVE STYLE

Call 660-442-3555 or 816-387-7175

NEED A DOCTOR AFTER 5:00?

St. Francis Family Health Care offers Extended Hours Monday - Thursday 5:00 - 6:30 p.m. at the St. Francis Orthopedic & Sports Medicine Clinic (across from the Hospital's ER)

Just walk in or make an appointment by calling (660) 562-2525

A limited number of appointments are available.

St. Francis Family Health Care
2016 South Main Street—Maryville, MO
(660) 562-2525—www.stfrancismaryville.com

CH-F to host free stroke awareness lunch seminar

Community Hospital-Fairfax, MO (CH-F), will be hosting a free stroke awareness lunch seminar on Wednesday, June 8, at 12:00 p.m. in the conference room at the hospital. Learn how CH-F is racing ahead in healthcare to become "Stroke Ready". Contact Community Hospital-Fairfax Development Office at 660-686-2317 for questions.



Get Up To \$5,250 In Rebates On Select New 2011 Ram Pickups

SAVE ON THE GREEN

2008 Jeep Grand Cherokee, 4x4, Black.....\$19,395	2007 Silverado, 4x4, Dually Crew, Duramax.....
2008 Jeep Liberty Sport, 4x4.....\$16,995	2006 Nissan Titan, 4x4, 4 Door.....\$18,995
2010 HHR 4 Cyl., 8,000 Miles.....\$11,995	2006 Suburban, 4x4, 1 Owner.....\$18,995
2006 Jeep Liberty, 4x4, 4 Door.....\$11,995	2005 Silverado, 4x4, Ext. Cab.....\$14,995
2010 Pontiac G6, 4 Cyl., Sun Roof.....\$15,995	2010 Traverse, AWD, Leather, Sun Roof, DVD, Satellite.....\$10,000 Less Than New
2009 Sebring LX, 4 Door.....\$13,995	2003 Ram 1500, Reg. Cab, SWB, 4x4.....\$8,995
2007 Chrysler 300 Limited.....\$16,995	2009 Colorado, Crew Cab, 4x4.....
2008 Chevy Aveo, Red.....\$7,995	2006 Chrysler 300.....
2008 Ram 2500, 4x4, Quad Cab, Diesel, Low Miles..	2010 Traverse, AWD.....From \$27,995
2006 Ram 1500, 4x4, Quad Cab, Hemi.....\$18,995	2011 Silverado, Crew Cab, 4x4, 14,000 Miles...\$27,995
2004 Ram 2500, 4x4, Diesel, Quad Cab.....\$15,995	2010 Avenger SKT, 4 Door, 9K.....\$16,995
2010 Suburban, 4x4, Leather, Maroon, DVD, Sun Roof	2010 Impala, Leather, 10K.....\$20,395
2010 GMC Acadia, FWD, Rear Camera.....\$28,995	2010 Impala, XM, On-Star.....\$17,995
2009 Silverado, 1500 Crew Cab, 4x4, 40,000 Miles, w/Warranty.....	2010 Ram 1500, Reg. Cab, 4x4, 6K.....\$20,995
2008 Silverado, Ext. Cab, 4x4, w/Warranty...\$23,995	2010 Caravan, Leather, Navigation, Sirius, Stow-N-Go...\$17,995
2008 Colorado, 4x4, Reg. Cab, 7,700 Miles, Immaculate.....\$19,995	2003 Dodge Ram, SWB, Hemi.....\$7,995
2008 Trailblazer, 4x4, 6 Cyl.....\$14,995	2011 Traverse, Low Miles.....\$29,995
	2009 Hummer, H3, Leather, 21K Miles.....

OVER 100 Pre-Owned In Stock To Save You Money Right Now!


WWW.LAUKEMPERMOTORS.COM

See Joe, Scott, Jerry, Bill, Steve or Shane today!




Laukemper MOTORS

Northwest Missouri's Premiere Service Dealer
Serving The Area Since 1946



CHRYSLER
I-29 & Hwy. 59 - Mound City, MO
660-442-5438
800-490-8035



Jeep
Chrysler - Dodge - Jeep
Chevrolet



GM
3rd & Nebraska - Mound City, MO
660-442-9942
800-381-9942



I
N
S
E
R
T
E
D

T
H
I
S

W
E
E
K

Holt County
Treasure of Northwest Missouri

Published By:
Mound City
NEWS

Visitors' Guide 2011

- Attractions
- Shopping
- Dining
- General Information

I
N
S
E
R
T
E
D

T
H
I
S

W
E
E
K

Subscribe Now!

In-area - \$30/year

(Holt, Nodaway, Atchison,
and Andrew Counties)

\$35/year

(Everywhere
else)

Subscriptions Prorated To Come Due In January

Mound City
NEWS



511 State St. • Mound City, MO • 660-442-5423

Local youth participates in agricultural experience

Lauren Geiger, Mound City native, recently returned from a two-week International Collegiate Agricultural Leadership (I-CAL) Program in Panama, Central America, and Colombia, South America. I-CAL is designed for students to learn more about international grain marketing and global agriculture and acquire a unique cultural experience. I-CAL is sponsored by the Grains Foundation as a special project of the National FFA Foundation.

Lauren, who is pursuing a degree in veterinary medicine from Kansas State University in Manhattan, KS, applied for the experience in February and received word that she would be traveling with 11 other college students from across the United States to both Panama, Central America, and Colombia, South America, in May.

While the program is typically for agriculture majors, Lauren applied from the perspective of wanting to be well informed. "When there are problems in other countries, it affects us here in the United States," stated Lauren. "I wanted to see the agricultural facets in other parts of the world first hand."

Lauren's experience in both regions lent itself to visits with coffee producers, a fresh fish market, a shrimp farm, a swine producer, research areas, fruit farms, a dairy cooperative; processing plants for chicken, swine, veal and beef; avocado processing, chicken and pork processing plant, an avocado cooperative, some small furniture buildings, a flower farm, small corn arepa production facility and an agricultural school that integrated into a high school be-

cause of such low graduation rates. Details of the trip can be viewed online, as a team blogged about each day of the trip at http://nationalffa.blogspot.com/2011_05_01_archive.html

One of the purposes of the trip was to address ways to maintain and grow the export business for U.S. agriculture. Lauren reported a wide chasm in agricultural divisions, with producers being either very rich or very poor. Likewise, in some areas there were no tractors and work was done by hand, or, in other areas, the technology was right behind that of the United States.

In addition to the agricultural facets of the trip, Lauren enjoyed zip-lining in the jungle and watching the workings of the Panama Canal, stating, "It's hard to explain how an enormous ship, with just inches to spare on each side, gets through the canal. It takes \$100,000 per ship to move through the canal."



Lauren Geiger of Mound City- Holds a hybrid fruit called an atamoya. The atamoya fruit is grown only at the fruit farm that Lauren and the I-CAL students visited in Colombia, South America.

This foreign agricultural experience left Lauren appreciative of everything that she has in the states. "We're fortunate to have what we do. There, a coffee farmer may refer to one of his two cows as the 'bank', so that if the farmer has a little trouble, the cow can be sold to make ends meet. Here, one cow is no big deal."

Lauren's summer adventures are not yet over. After returning on Sunday, May 29, she caught a plane for Washington, D.C., where she will intern with U.S. Kansas Senator Pat Roberts. Lauren will work in the senator's office during the month of June giving tours, and answering the telephone as well as other responsibilities not yet assigned.

The National FFA Organization recently awarded Lauren a \$2,000 AGCO Your Agriculture Company scholarship. Lauren's AGCO scholarship is one of 1,521 awarded from among the 7,649 applicants across the country.

Free Fishing Day Derby at Squaw Creek Wildlife Refuge

Squaw Creek Wildlife Refuge near Mound City is offering a free fishing derby day for people of all ages and no permits are needed. The free Fishing Day Derby on Saturday, June 11, will be held from 9:30 a.m. to 12:00 p.m. in accordance with the Missouri Department of Conservation's Free Fishing Days held this year on June 11 and 12.

Refuge staff members, in a cooperative effort with the Missouri Department of Conservation's Fisheries, have stocked a 2-acre fishing pond on the refuge near the auto tour entrance. The fishing pond is the location for the June 11 fishing activities on Saturday morning, which will provide anglers with information, techniques, equipment and bait.

Fishing without permits or licenses will be allowed both Saturday and Sunday, June 11-12, on the refuge in the designated public open areas. Normal regulations apply and will remain in effect including the size and number of fish one will be permitted to keep.

One of the goals of Free Fishing Days is to encourage people to sample the state's abundant fishing opportunities. Fishing is one of six wildlife-dependent public use priorities of the U.S. Fish and Wildlife Service. Join refuge staff members, Missouri Department of Conservation Fisheries employees, volunteers and anglers of all ages for fun and a relaxing day fishing at Squaw Creek National Wildlife Refuge.

Those interested can call 660-442-3187 to obtain further information. Squaw Creek Refuge is located 5 miles south of Mound City and 30 miles north of St. Joseph, MO. To reach the refuge, take I-29 to exit 79, then two and 1/2 miles south on Highway 159.



South Holt R-1 High School honor rolls

Honor roll students at South Holt R-1 in Oregon, MO, for the fourth quarter and second semester follow:

4th Quarter Seniors

High: Hannah Barnett, Keiffer Buckles, Rilee Eaton, Darien Fouts, Ashley Graupman, Taylor Huntsman, Toshia Jones, Jennifer Kieser and Coldin Noellsch

Regular: Zach Beers, Ben Dudeck, Baillie Shores and Heather Sipes

Juniors

High: Sam Cotton, Hannah Fansher, Sydney Markt and Blair Million

Regular: Chelsea Acton, Jakob Allen, Tanisha Chaney, Jenna Kinney, Logan Kunkel, Alex Ripley and Cami Scroggins

Sophomores

High: Sarah Costello and Rachel Kurtz

Regular: Paul Barclay, Jeremiah Bragg, Billy Brock, James Fuller, Errick Greene, Chase Howell, Miranda Jones, Darian Kurtz, Taylor Logan, Jacob McCully, Abby Messick, Mitch Mueller, Jessica Powell, Kareena Shuman, Doug Simpson and Julianna Smith

Freshmen

High: Kynee Buckles, Gavin Graupman and Nicole Meyer

Regular: Megan Binder, Kynee Buckles, Pierce Elifrits, Eddie Jones, Brooks Knaebel, Austin Knaebel, Courtney Thompson, Mandy Nurski and Taryn Weber

2nd Semester Seniors

High: Hannah Barnett, Keiffer Buckles, Rilee Eaton, Darien Fouts, Ashley Graupman, Taylor Huntsman, Toshia Jones, Jennifer Kieser and Coldin Noellsch

Regular: Zach Beers, Ben Dudeck, Baillie Shores and Heather Sipes

Juniors

High: Sam Cotton, Sydney Markt and Blair Million

Regular: Chelsea Acton, Jakob Allen, Tanisha Chaney, Cody Dozier, Hannah Fansher, Jenna Kinney, Logan Kunkel, Alex Ripley, Cami Scroggins and Kylynn Sisk

Sophomores

High: Jeremiah Bragg, Sarah Costello, Rachel Kurtz and Abby Messick

Regular: Paul Barclay, Abby Blackwell, Billy Brock, James Fuller, Chase Howell, Miranda Jones, Darian Kurtz, Taylor Logan, Jacob McCully, Mitch Mueller, Jessica Powell, Kareena Shuman, Doug Simpson and Julianna Smith

Freshmen

High: Gavin Graupman and Nicole Meyer

Regular: Megan Binder, Kynee Buckles, Pierce Elifrits, Eddie Jones, Brooks Knaebel, Austin Knaebel, Courtney Thompson, Mandy Nurski and Taryn Weber

8th Grade

High: Rachel Binder, Rachel Mackey, Colby Markt, Courtney Smith, Mac Prussman, Courtney Smith and Linden Stucky

Regular: Emily Cox, Shelby Eaton, Wyatt Jackson and Hayden Weber

7th Grade

High: Abby Egbert, Emma Ezzell, Ashley Hunziger and Hailey Markt

Regular: Austin Barton, Hailey Moore and Courtney Sharp

Community Services, Inc., Weatherization Assistance Program offers free home weatherization to help keep local families cool this summer

Community Services, Inc. (CSI), provides weatherization services for local families to keep cool this summer and save energy as well as money on utility bills.

Weatherization measures reduce heat, and prevent conditioned air from leaking to the outside. These measures help increase the comfort of homes and lower energy bills year after year. For example:

- Weatherization can cut a home's average annual energy bill by more than \$430.
- Weatherized homes are

cooler in the summer and warmer in the winter.

- Weatherized homes cost less to maintain.
- Weatherized homes are safer.

The Missouri Weatherization Assistance program is funded by the U.S. Department of Energy and administered by the Missouri Department of Natural Resources. This program has expanded due to funding from the Reinvestment Act of 2009. The funding allows CSI, Inc., to weatherize more homes than ever. This additional funding will only be avail-

able for a limited time. The qualifying income guidelines are very generous with the hope of targeting households with moderate to low incomes. Folks with moderate incomes will likely not qualify next year.

What type of services does the Weatherization Assistance Program offer?

- A complete audit of the unit for energy efficiency to determine the most effective measures to reduce energy consumption
- Caulking around windows and door frames
- Blowing insulation
- Replacing of old incandescent light bulbs with new CFLs
- Inspection, tune-up, repair or replacement of the heating system
- Central air conditioners, heat pumps and room air conditioners may be repaired or replaced provided the occupant can provide a letter from a licensed physician stating that the occupant's health and safety would be in danger without functioning air conditioning unit

The Weatherization Assistance Program of Community Services, Inc., serves a nine county area including the counties of: Andrew, Atchison, Buchanan (outside city limits), Clinton, DeKalb, Holt, Nodaway and Worth.

For questions or to apply, please contact Laura Parman or Samantha Seabolt in the Weatherization Department at Community Services, Inc., in Maryville, MO, at 660-582-3113.

Community Calendar

brought to you by



Member FDIC

NODAWAY VALLEY BANK the right bank...

614 State Street • Mound City, MO • 660-442-3131

- June 3-4 - Holt County Relay For Life in Oregon, MO
- June 6 - Friends of the Library Meeting at the Mound City Public Library - 5 p.m.
- June 7 - Story Time at Mound City Public Library - 10:00 & 11:00 a.m.
- June 8 - Summer Reading Program at the State Theater - 2 p.m.
- June 9 - Mound City City Council Meeting at City Hall - 5:30 p.m.
- June 13 - Mound City Public Library Board Meeting at the Library - 5 p.m.
- June 14 - Story/Craft Time at Mound City Public Library - 10:00 & 11:00 a.m.
- June 15 - Summer Reading Program at the Library and City Hall Park - 2 p.m.
- July 2 - Mound City Truck & Tractor Pull
- July 4 - Independence Day

Every Friday at the Mound City Nutrition Site
Doughnuts, Doughnut Holes, Cinnamon Rolls
8:30 a.m. until Sold Out

A.A. Mound City New Beginnings
Tuesdays and Fridays, 7 p.m.,
Community of Christ Church, 1410 Nebraska St., Mound City

Take Off Pounds Sensibly (TOPS), non-profit,
non-religious weight-loss support group, Mondays, 4:30 p.m.
Concordia Lutheran Church, Mound City

Deadline for Calendar Items is Monday Evening

Lobby Hours: Monday thru Thursday 9 a.m.-4 p.m.; Friday 9:00 a.m.-5:00 p.m.
Drive-in Window: Monday thru Thursday 8 a.m.-5 p.m.; Friday 8 a.m.-6 p.m.; Saturday 8 a.m.-noon

CHECK OUT THESE OTHER CONVENIENT NVB LOCATIONS

MARYVILLE	SAVANNAH	ST. JOSEPH
660.562.3232	816.324.3158	816.364.5678
Third & Main Street 209 N Buchanan (drive-up only)* 1303 S Main*	301 S US Hwy 71*	4001 N Belt Hwy & Cook Road* 402 N Belt Hwy & Faraon Street* 1701 S Belt Hwy* 1302 S Riverside & Mitchell Ave.* 6304 King Hill Avenue*
nvb.com		

*Drive-up ATMs

CRAIG COMMUNITY CALENDAR

(ITEMS MUST BE AT THE MOUND CITY NEWS BY NOON MONDAY)

- June 34 - Holt County Relay For Life in Oregon, MO
- June 9 - Craig Summer Library Program at Craig R-III Library - 9 a.m. - 1 p.m.
- June 11 - Craig City Council Meeting - 9:00 a.m.
- June 16 - Craig Summer Library Program at Craig R-III Library - 9 a.m. - 1 p.m.
- June 16 - Craig Community Committee Meeting at Craig City Hall - 6:30 p.m.
- July 4 - Independence Day
- July 9 - Gas & Steam Show at Craig City Park

See Us For All Your Banking Needs

- FREE Checking • FREE Internet Banking
- NOW Accounts • Savings Accounts • CD'S
- LOANS At Competitive Rates for Homes, Cars, Etc.

Citizens Bank & Trust

PO Box 70
Rock Port, MO 64482
660-744-5333

PO Box 38
Craig, MO 64437
660-683-5333

Member FDIC

904 State St.
Mound City, MO 64470 660-442-3800



LEGAL NOTICES

**NODAWAY-HOLT R-VII SCHOOL DISTRICT
NOTICE TO BIDDERS**

Notice is hereby given: Sealed bids will be received by the Superintendent of the Nodaway-Holt Schools in Nodaway County, in the State of Missouri, 318 S. Taylor Street, Graham, MO, for furnishing all equipment, labor and materials for the following:

REPLACEMENT OF SELECTED 1952 ROOF SECTION AT NODAWAY-HOLT ELEMENTARY IN MAITLAND, MO.

The roof may be inspected between 8:00 a.m. and 3:00 p.m., Monday through Friday, from May 23-June 8 with the exception of Monday, May 30. Bid specifications may be picked up in the Superintendent's office in Graham during the above mentioned hours. Bidders shall visit the site and determine the field conditions affecting their work. The owner will assume that the bidders are aware of all items, dimensions and existing conditions.

Bids should be addressed and submitted to the secretary of the Nodaway-Holt Board of Education in a sealed envelope marked "Elementary School Roof Bid" with the name of the bidder showing, no later than 3:00 p.m. June 14, 2011. Bids will be opened at the regular board meeting on Wednesday, June 15, 2011, at 7:00 p.m. in the board room at the high school in Graham.

Each bid must be accompanied by a bid bond or certified check on a solvent Missouri bank in the amount of not less than 5% of the bid, payable to the School District. Security will be held until a time in which the contract is awarded, at which the security will be promptly returned.

The Board of Education reserves the right to accept or reject any or all bids and/or to waive any irregularities in the bidding form or procedures, as they deem to be in the best interest of the District. All bids to be considered must be in writing and show the exact amount of the bid for the above described work.

Beverly Shifflett
Board of Education Secretary
Nodaway-Holt R-VII School District
46/2tc

It's grilling season, make room for the fruits and vegetables

By Kelli Wilmes, MS, RD, LD, Nutrition and Health Education Specialist

Grilling season is upon us with the arrival of warmer temperatures and longer days. People tend to think of hamburgers, steaks, brats, and hot dogs for grill entrees. Why not try zucchini, eggplant, asparagus, or portabella mushrooms? Move over meat and make room for the fruits and vegetables.

Research has shown that Americans do not consume enough fruits and vegetables each day. The USDA's Dietary Guidelines for 2010 provide three key reasons why people should increase their fruit and vegetable consumption. First, fruits and vegetables provide important nutrients that are missing in many of our diets including dietary fiber, potassium, folate, magnesium, and vitamins A, C, and K. Secondly, eating fruits and vegetables reduces the risk of many chronic diseases. It has been shown that intake of at least 2 ½ cups of fruits and vegetables daily reduces the risk of suffering a heart attack or stroke. Finally, fruits and vegetables are low in calories when prepared in a healthy way without added fats and sugars. Eating fruits and vegetables instead of high calorie foods may help with weight loss or maintenance of an already healthy weight.

Grilling provides us with another opportunity to prepare these healthy fruits and vegetables in a quick and different way. Sometimes people comment, "Everything tastes better on the grill", which can hold true for fruits and vegetables also.

Many times people do not like eggplant, zucchini, or asparagus until they try it grilled. Taste is not the only benefit. Vegetables and fruit cook so quickly on the grill that they retain much of their vitamin and nutrient content which is another bonus.

For preparation, it is best to have the grill warm, but not as hot as you would for grilling meat. Lightly brush the vegetables with olive oil and put directly on the grill, turning until tender. Try larger hunks like half of a green pepper, large slices of squash, or portabella mushroom caps, which are large enough to sit on the grates without falling through. A grill basket, aluminum foil pan, or kabobs can also be used. If you prefer steamed veggies, wrap the vegetables in aluminum foil with a little olive oil and your favorite marinade or spices. Seal and place on grill, turning occasionally, for 10-12 minutes or until veggies are tender.

Experiment with different spices, marinades, and sauces when preparing fruits and vegetables. Don't be afraid to try out various flavors. Store bought mixes and marinades may have extra sodium, sugar, and calories compared to your specialized homemade version. Balsamic vinegar or other flavored vinegars are great to use to drizzle over grilled vegetables or to use in a marinade.

Let's not forget about dessert. Fruits on the grill make a sweet treat. Firmer fruits like apples, pears, and pineapple are per-

fect for grilling. However, other fruits like peaches and mangoes can also be delicious, but need to be monitored more closely when grilling to prevent overcooking which causes them to be mushy. Try cutting a fresh peach in half; remove the pit, brush lightly with olive oil, and grill for 2-3 minutes on each side. Sprinkle with cinnamon and add a dollop of light whipped topping or low fat frozen yo-

gurt for a yummy treat.

Remember to always practice safe grilling techniques and food safety when preparing any food. Now go grab your fruits, vegetables, and a sense of adventure and head outside to enjoy some great grilled dishes. For more information on this or any other nutrition or health topic, please contact Kelli Wilmes at wilmesk@missouri.edu or call (660) 582-8101.

Foundation releases annual update on Missouri Medicaid

Publication informs care providers, community organizations and public

The Missouri Foundation for Health (MFH) has released 2011 Missouri Medicaid Basics, an annual publication providing a straightforward, factual overview of the Missouri Medicaid program, now called MO HealthNet.

The publication is intended as a resource for the public, care providers and community leaders, and anyone seeking a clearer understanding of the MO HealthNet system.

Produced by MFH's health policy staff, Missouri Medicaid Basics provides a clear framework for the state's Medicaid program in three subject areas:

- MO HealthNet-eligible populations.
- Programs and services for MO HealthNet recipients.
- Funding sources for MO HealthNet (state, federal, and other).

The publication offers an explanation of MO HealthNet using a variety of easy-to-understand graphics and tables. New to the 2011 edition is a collection of

graphics on MO HealthNet enrollment growth by eligibility group and region.

There is updated information exploring the relationship between MO HealthNet enrollment and downturns in the state and national economies. This year's version also highlights the impact of federal health reform on Medicaid.

The 2011 Missouri Medicaid Basics can be downloaded free of charge at <http://www.mffh.org/mm/files/MedicaidBasics2011.pdf>. Limited free print copies also are available; contact Chris Raborn at 314.345.5576 or craborn@mffh.org.

Established in 2000, MFH is the largest nongovernmental funder of community health activities in Missouri. MFH is in its eighth year of grant making, having issued more than \$410 million in grants and awards to date. It is dedicated to improving the health of unserved and underserved residents in 84 Missouri counties and the City of St. Louis.

COMMERCIAL OR PERSONAL PRINTING

- * Envelopes
- * Carbonless Forms
- * Letterhead
- * Business Cards
- * Business Forms
- * Flyers
- * Invitations
- * MUCH MORE!

Mound City
NEWS

511 State Street
Mound City, MO
660-442-5423

Shop Falls City

Less than a 30 minute drive from Mound City - Falls City has a lot to offer

Yesterday's Closet

We Have Something for Everyone. Stop By And Check Us Out!

1606 Stone St. • Falls City, NE
402-245-4888

Stop and Visit Our Annex, etc.
1604 Stone St. • Falls City, NE

Brown's SHOE

Come In & Check Out New Spring & Summer Arrivals

Clarks, Naturalizer, Taos & Keen

1615 STONE ST. • FALLS CITY, NE
PH. 402-245-3016

Chaney Furniture Co.

Since 1921

Upgrade your foundation to a Tempur-Pedic™ adjustable base

15 Months
No Interest Financing

1523 Stone St. • PO Box 267
Falls City, NE
402-245-3912
877-245-4844
www.chaneyfurniture.com

MERZ FARM EQUIPMENT

North Hwy. 73 • Falls City, NE
402-245-2419

Stop In For

Hesston Hay Parts.
MASSEY FERGUSON

ORSCHELN FARM & HOME

Answers & Low Prices Down Every Aisle™

Spring Is Here!

We Have All Gardening Seeds, Shrubs, Bushes, Annuals & Perennials. Also Lawn Decor, Mowers, Grills, Mulch, Patio Stones & Bricks.

402-245-4588
65273 706 Rd. (East Highway 159), Falls City, NE

RadioShack DEALER

1610 Stone St. • Falls City
402-245-5029

Falls City Pharmacy

120 E. 18th St. • Falls City
402-245-2029

"A World of Possibilities"

FALLS CITY TRAVEL COMPANY
KELLY CARPENTER, MANAGER

1608 Stone Street,
P.O. Box 26
Falls City
Fax & Phone: 402-245-3344
fctravel@scentco.net

True Value

36.8 Oz. Concentrate
Weed & Grass Killer Bonus Size
DM 061 & 068
\$19.99
Reg. \$25.99
• Rainfast in two hours
• Won't wash off - allows more killing power into the root
• Ideal for use in and around fences, trees, driveways, flower beds, walkways & shrubs
L 687 804 B12 While Supplies Last
402-245-2725
1519 Stone St. • Falls City

Heritage Falls Candles & Gifts

Flavors of the Month - 25% Off
Fresh Lilac, Strawberry Lemonade, Mango Papaya
Mon, Tues, Wed, Fri, & Sat - 10am - 5pm
Thursday - 10am - 6:30pm
New Line Of Warmers & Gift Registry Available
1614 Stone St., Falls City, NE
402-245-3443 (Phone & Fax)
www.heritagefallsandles.com

Jim Hill's

PAINT • GLASS • WALLPAPER
FLOOR COVERING • HARDWARE • AUTO GLASS
See us for your flooring & window projects.
1619 Chase Street
Phone: (402) 245-4444
Fax: (402) 245-4446

Mutt & Jeff Drive-In

Located at North Old Hwy. 73 in Falls City, NE
Open 7 Days A Week
5 p.m. to 11 p.m.

NOW OPEN
Gift Certificates Available

Norma's Antique Mall, LLC

Fine quality antiques & collectables
Norma Britell, Owner
normasantiquemall@yahoo.com
1715 Stone St. • Falls City
402-245-4338
Hours:
Mon. Through Sat.
10 a.m. - 5 p.m.

New Specials Every Week!

NEW Mudpie Summer Line Is In.
Also NEW Purses Just Arriving!
Hours: Monday Through Friday - 10:00 a.m. - 5:30 p.m.
Saturday: 10:00 a.m. - 4:00 p.m.
1611 Stone Street
Falls City, NE
68355
Phone: 402-245-5511

HOMETOWN FLORAL & GIFTS, INC.

1605 Stone St. • Falls City, NE
402-245-2200
20% Off
Spring & Garden Decor
June 9, 10 & 11

Farm & City Supply

Comfort Flip Flops by Rafter's
From \$5.99 to \$15.99
Many Styles - Best Quality
2618 Harlan Street • Falls City, NE 68355
ACE Hardware 402-245-3400

Classifieds

GET THE JOB DONE!

BUY • SELL • TRADE • RENT
HIRE • THANK YOU/REMEMBERING • LEGAL SERVICES

CALL THE MOUND CITY NEWS TO PLACE YOUR AD • 660-442-5423

MISCELLANEOUS

EMU OIL- Arthritis and joint pain, burns and sunburns, aging skin, cuts and abrasions. Hand lotion. G & L Enterprises. Call 816-387-7332 or 660-442-5688.

40/tfc

TIME IS PRECIOUS. And so is your life. How can you save both? Find out at the Community Hospital-Fairfax, MO, Stroke Awareness Luncheon, Wednesday, June 8, 2011, at 12 noon in the hospital's conference room. No RSVP needed.

47/1tc

GREG'S JEWELRY - Located at 307 E. 5th St., in Mound City, MO, offers alexandrite and pearl jewelry which are June's birthstones! Also, anniversary diamond bands, solitaire rings, pendants; and Father's Day rings and gifts. Call 660-442-3739.

47/5tc

HOWARD'S GUN REPAIR- 12315 Hwy. 59, Craig, MO, 64437. 660-683-9401.

17/tfc

FOR SALE- Black and silver scooter, 100 mpg, runs 40 mph. \$600 OBO. Call 660-572-0094.

47/2tc

REAL ESTATE

ENTERPRISE REALTY

Jim Loucks, Sales Agent
816-390-2749
Office **877-669-7653**
www.entreality.com

LAND FOR SALE

• 190 A. Bottomland
Platte County



AUCTIONS
660-442-5436
"The Voice Everybody Knows"

Mound City
NEWS
CLASSIFIED ADVERTISING
CALL 660-442-5423

HELP WANTED

DRIVERS- Excellent pay, miles and home-time when you roll with Dynamic Transit! CDL-A, 1 yr. OTR Exp. Req. Call Michelle at 1-888-880-5913.

46/4tc

Mound City
NEWS
CLASSIFIED ADVERTISING
CALL 660-442-5423

NOW HIRING PART-TIME DIETARY COOK

Apply at:
TIFFANY HEIGHTS
1531 Nebraska St.
Mound City, MO 64470
660-442-3146
EOE

CUSTOM HAY BALING FOR THE 2011 SEASON

John Deere 567
Cover-Edge Net Wrap Baler
Also looking for farm ground to custom/share/rent.
Also looking for pasture.
Trevor Drewes
816-262-1304



514 B State St. • Mound City, MO 64470
660-442-6500 • Cell: 816-387-3018
kathiclement@yahoo.com
Kathi Clement, Broker

Weldon's Tree Service

Tree Trimming/Transplanting
Tree and Stump Removal/Tree Shearing

Insured ~ Public Liability
Residential & Commercial

FREE ESTIMATES
(660) 582-3267



Casey Johnson, Owner
660-442-6354
Licensed and Insured
Specializing with Trane and Heil models

Socket

Sign up for High-Speed DSL or Dial-Up Internet today.

660-572-7900 • www.socket.net

All You Can Eat

Biscuits and Gravy
ONLY \$5 !!!
Saturday, June 11

Oregon's City Wide Garage Sale Day!

Serving starts at 7 a.m.

T.J. Hall Building, Oregon, MO

Sponsored by the Holt County Historical Society

Mound City
NEWS
CLASSIFIED ADVERTISING
CALL 660-442-5423

COTTON BODY SHOP & TOW SERVICE

Larry & Troy Cotton
Oregon, MO
Shop: 660-446-2008
Home: 660-446-2561

NAUMAN CONSTRUCTION & CABINET SHOP, INC.

GENERAL CONTRACTORS

New Construction, Remodeling, Cabinets.
Granite & Solid Surface Countertops

307 State Street • Mound City, MO 64470
Shop: 660-442-5290 Website and e-mail:
Hugh: 816-383-3001 www.naumanconstruction.com
Tracy: 816-596-7159 tracy@naumanconstruction.com

All Your Flooring Needs

- Tile
- Carpet
- Laminate Flooring
- Linoleum

Installation Available

McIntire Building Center

Best Do It Best Rental Center
108 W. 7th St. • Mound City, MO • 660-442-5416
Hours: Monday-Friday - 7:30 a.m. - 5 p.m. Saturday - 7:30 a.m. - 4 p.m.

Blem Batteries For Sale

\$49.95 - \$59.95

Schoonover Oil Co., Inc.

660-442-5727 • Mound City, MO

KNOWLES CONSTRUCTION

Decks, Concrete (Flatwork only), Additions, Remodeling and More.

Call Jason at
660-572-0094

I buy broken & unwanted ATV's, 3-wheelers, mopeds, golf carts & snowmobiles. Shape not a factor. Call or text Mike at **660-853-0297**



J & E Concrete

Commercial & Residential Concrete Work

Jeff Karsten
Cell: **816-262-5933**

Free Estimates

MARYVILLE GLASS AND LOCK

- Overhead doors and operators
- Custom residential replacement windows
- Complete locksmithing services
- Commercial - residential glass replacements

(660) 582-3131
5TH AND BUCHANAN, MARYVILLE

MC Auto & Truck Repair

Mound City, MO
660-442-5600

- Tires
- Alignments
- Oil Changes
- Transmission Flush
- State Inspections

Monday-Friday:
8 a.m. - 5 p.m.
Saturday:
8 a.m. - 12 noon

Staples AutoBath

442-6094 or 442-6095



By Appointment

417 State St.
Mound City, MO

Mound City
NEWS
CLASSIFIED ADVERTISING
CALL 660-442-5423

Brad Pankau's Home & Farm Repair

Roofing, siding, interior/exterior painting, decks, gutter installation & cleaning, electrical & plumbing, drywall & interior remodeling, tree trimming & removal, etc.

BARN & IMPLEMENT SHED REPAIR!

No job is too small! ~ Fully Insured

Call 660-442-3354, 660-254-0156, or 660-442-6343.

COMMERCIAL OR PERSONAL PRINTING

- * Envelopes
- * Carbonless Forms
- * Letterhead
- * Business Cards
- * Business Forms
- * Flyers
- * Invitations

511 State Street
Mound City, MO
660-442-5423

Mound City
NEWS

CLASSIFIED
ADVERTISING
CALL 660-442-5423



Legion members conduct memorial services

The three volley salute- Was fired by area legion post members at selected cemeteries and sites in Mound City, Craig, Fairfax, Tarkio, Rock Port and Westboro on Monday, May 30. The area services to honor veterans included the singing of the national anthem and a short program that included placing a wreath on the unknown soldier's memorial and a Tribute to the Fallen before the rifles were fired three times. "Taps" was played directly after by Duane Nauman of Mound City and U.S. Congressman Sam Graves of Tarkio, MO.



In a joint Memorial Weekend Celebration- By the Mound City Museum and the Holt County Historical Society, people gathered at the Mound City Museum to honor the veterans of Holt County on Sunday, May 29. Pictured above during a portion of the ceremony are standing, left to right, Ted Yocum, Duane Luna, Barb Heitman, Judith Long and Myra Norman. Seated are James Haer, Lucille Norman and Beverly Haer.

Memorial weekend event honors Holt County veterans

The Mound City Museum and the Holt County Historical Society joined forces to honor veterans of Holt County during a special event held at the Depot Museum in Mound City on Sunday, May 29.

Visitors at the event were enlightened in regard to L Company's role in World War I. Attendees and afternoon visitors to the museum brought a great amount of memorabilia from WWII family members. The history book of the American Legion Post #121 was turned over to the museum for safe keeping.

Paul P. Shutts Legion Post #121 members posted the colors before legion member, Richard Barrett, shared the history of Paul Pierce Shutts, and Mike Girdner shared the history of L Company. Paul P. Shutts was a Mound City World War I L Company private, who is the namesake of the local legion post.

Paul P. Shutts was born November 21, 1891. He grew

up on a farm north of Mound City with his parents, Lewis and Julia, and his siblings, Roy and Hazel. He completed eighth grade in the Squaw Creek School District before finishing his education in Mound City schools.

Shutts was in the auto business until he enlisted in L Company in April, 1916. As a platoon leader and bugler for L Company 139th Division, he served at the Mexican border in 1916 before being transferred overseas in 1918.

The L Company was ordered to go over the top of the trenches members had dug to silence the machine gunfire. The company advanced in waves, with Paul P. Shutts directing the first wave. Shutts was killed instantly during that advance in September, 1918. He was buried near the foot of a hill in Baluny, France, before being brought back for burial at the Mount Hope Cemetery in Mound City on August 21, 1921. A crowd of nearly 5,000

people were estimated to attend the black horse drawn caisson funeral.

Richard Barrett, who served during World War II in the Headquarters Company, 3rd Battalion, 232nd Infantry Regiment of the 42nd Infantry Division (Rainbow), found out after he moved to Mound City and joined the legion, that he had actually been stationed and walked in the same area of France that Paul P. Shutts had served and died in. "Finding that out made it all the more real. I knew his family and became interested in those details of his life," commented Richard Barrett.

Mike Girdner, Holt County history buff and president of the Holt County Historical Society, saluted the war efforts of L Company, a unit formed in Mound City in 1917. In addition to the facts shared in the story of Paul P. Shutts, Mike elaborated on the role of Holt County soldiers. The L Company was part of the Missouri Nation-

History of Paul P. Shutts and L Company shared

al Guard, 4th Infantry Regiment. In 1916, the company was sent with Black Jack Pershing to chase Poncho Villa around in Mexico. After eight months of that, the largely Holt County populated company, mustered in Mound City in 1917 and camped in South City Park (city hall park). Members became federalized and became part of the U.S. Army's 35th Division, 139th Regiment. They were sent to basic training at Camp Doniphan, OK, and, in April of 1918, were sent to France where they received training in trench warfare. In September/October they took part in the Meuse-Argonne. L Company members were called the 'heroes of the Meuse-Argonne' (there was a book written about the 35th Division). The company fought for five consecutive days and the division took 7,000 casualties.

The Depot Museum and the Holt County Histori-

cal Society are excellent resources for finding written information regarding L Company and Paul Shutts and viewing pictures and other memorabilia. Both or-

ganizations are sources for other information on American soldiers who fought in all the wars for the freedoms that the United States enjoys today.

The Klub

Nightly Specials - Homemade, Fresh Food

Friday Night: **Walleye**
 Saturday Night: **Prime Rib & BBQ Baby Back Ribs**

Great Lunch Specials
 Wednesday - Saturday

Wednesday :
10 oz. Top Sirloin

North End of Nebraska St., Mound City • 660-442-4043

0.0% FINANCING FOR 48 MONTHS23**

John Deere 4520 Cab Tractor

The high quality of John Deere at the low prices of Hiawatha Implement.

Hiawatha Implement supports the 2nd Annual Rumble by the Refuge Truck and Tractor Pull.

Location: 1 mile west of Mound City
 Date/Time: July 2, 2011 @7pm
 Admission: Adults \$10, Kids 7-12 \$5, Coolers \$10

The fastest, most powerful Gator yet.

No Interest, No Payments For 12 Months23**

Gator™ XUV 825i

www.hiawathaimplement.com
www.JohnDeere.com

HIAWATHA IMPLEMENT CO., INC.
 1215 OREGON
 HIAWATHA, KS 66434
 (785) 742-7121

HIAWATHA IMPLEMENT CO., INC.
 1410 STATE STREET
 MOUND CITY, MO 64470
 (660) 442-3814

Time is precious.
 So is your life. How can you save both?

You've heard the symptoms of stroke. You know stroke happens to many people. But what should you do when they happen to you? Take this opportunity to learn how rapid response and timely request for care can make a difference in your life.

Free Stroke Awareness Lunch Seminar

June 8, 2011, 12:00 p.m.

CH-F Conference Room

Learn how CH-F is racing ahead in healthcare to become "Stroke Ready."
 If stroke happens, WE ARE READY

ARE YOU?

Contact the Community Hospital-Fairfax Development Office at 660-686-2317 for questions. Find CH-F on Facebook.

*Offer ends 8/31/2011. **Subject to approval credit on John Deere Financial Installment Plan. Some restrictions apply; other special rates and terms may be available, so see your dealer for details and other financing options. The engine horsepower information is provided by the engine manufacturer to be used for comparison purposes only. Actual operating horsepower will be less. SAFETY: line with it Equal Opportunity Lender