

Don't forget to vote August 4

A Special Election will be held in Holt County on Tuesday, August 4, 2015. The question on the ballot is whether to impose a countywide sales tax of 1/2 of one percent for a period of 10 ten years. This is the same 1/2 cent sales tax that was voted into effect in 1995 and 2005.

For the location of polling places in Holt County, please refer to the Notice of Election ad in this week's *Mound City News*.

Kent/Livengood Memorial Fishing Derby August 8-9

The 35th Annual Gene Kent and Melvin Livengood Memorial Fishing Derby will be Saturday and Sunday, August 8-9, at the Thurnau Conservation Area located west of Craig, MO. Fishing hours are 7 a.m. to 7 p.m. on Saturday; and 7 a.m. to 3 p.m. on Sunday.

To enter the derby, contact Doug Livengood at 660-562-7787.

The Klub to host grand opening

Charlie and Betty Triggs, Big Lake, MO, the new management team at The Klub in Mound City, have announced that Saturday, August 1, is the grand opening of The Klub. Page 2 Band will perform from 9 p.m. to 1 a.m., with a prime rib special offered for dinner. Drink specials will be available during the evening.

"Showtime Saturday" to showcase local talent

The Merchants Around the Square committee of Oregon, MO, is spearheading a Showtime Saturday, featuring local talent including vocal music, dancing, skits, lip sync, instrumental numbers and more on Saturday, August 8, beginning at 7 p.m. at the bandstand in the courtyard on the Oregon, MO, square.

Anyone with a talent that would like to participate, contact Kelly Kurtz (660-446-3443), Susan Noland (660-446-2849) or Phyllis Dannar (660-446-3479).

"First Sunday" to feature dolls at Holt County Historical Society Museum

The Holt County Historical Society's Methodist Church Museum at 115 Ada Street in Fortescue, MO, is hosting a "First Sunday" event featuring the hundreds of dolls and accessories belonging to the society's president, Sharon "Sally" Davis Yates Waggoner of White Cloud, KS. The event is Sunday, August 2, from 1-5 p.m.

There is no admission fee for the event. Tables will also be set up in the fellowship hall for guest displays.

Area schools spend summer preparing facilities for 2015-2016 term

Schools in the area closed their doors for the summer in late May. The students walked out with plans to swim, ride bikes, travel with family and sleep late. Teachers shut the grade books and made plans for a full summer break. For the maintenance and custodial crews at the local schools, however, the busiest part of the year was just beginning.

The summer break allows the crews to accomplish tasks such as refinishing floors and painting walls without interruption from students and staff. Summer break is also the opportune time to initiate and complete building renovations or projects.

Mound City R-2 has had several summer projects keeping the maintenance and custodial staff busy. Contractors have also been in the building placing air conditioning units in the classrooms. Each room will have its own heating/cooling unit that uses heat pumps located on the outside of the building on the backside and in the alley. The units were placed at these locations to keep them off the roof which would add weight and increase the chances for leaks throughout the building. The gymnasium will be the only part of the building that will have units on the roof. The project is scheduled to be completed by August 1.

The multipurpose building is behind schedule. There are two reasons for the delay. At least 60 days of work were lost due to rain and wet conditions which attributes to at least 90% of the delay. The other issue is the bidding process for completion of the projects within the new building. In order to allow for local businesses and individuals to bid on the projects, the specifications for the building had to be rewritten because drawings and engineering plans must be much more specific than if the building project manager were to use its company's people exclusively. Mound City R-2 wants local companies and individuals to have the opportunity to bid on the project.

The third major summer project at Mound City R-2 involves work at the football field/track complex. The school's director of maintenance, Paul Panning, and his crew installed a new fence along the west side of the track to provide a safer area for spectators and athletes. The crew also tore out and poured new concrete for the steps down to the track on the

spectator side of the complex.

The administration of Mound City R-2 gives special recognition to Panning and the entire maintenance crew for the hard work accomplished this summer.

Nodaway-Holt R-7 in Graham, MO, is continuing to rebuild from the tornado that struck the school on September 9, 2014. The vocational agriculture building has received a new metal exterior. The high school library was relocated within the main building in order to move the band room into the main building from the vocational agriculture building.

The maintenance department placed new windows in the elementary and high schools, with the exception of the windows that were placed new in 2000. New exterior doors have been put in the 1952 section of the elementary school and in the 1938 section of the high school. The crew has also been busy with the usual summer duties of painting, stripping and waxing floors and doing maintenance on desks, chairs, cabinets and other fixtures.

At South Holt R-1 in Oregon, MO, several projects have been accomplished and are still in progress. New windows were placed on the north and west side of the building for the special education, third, fourth and fifth grades, junior high math, junior high science rooms and the superintendent's office. This work was contracted with Wesley Glass of St. Joseph, MO.

New carpet was installed in all the elementary classrooms and hallways. The library was recarpeted. The work was contracted with Eckard's of St. Joseph.

Froeschl Floors of Falls City, NE, was contracted to refinish the floors, bathrooms and showers in the boys' locker room. New lockers were installed in the junior high boys' locker room. Wi-Fi was updated throughout the school.

Resurfacing the east and west parking lots and playground will be completed in mid-August by Herzog Contracting of St. Joseph. Over Christmas break, the new gym/multipurpose room will be repainted by Pankau Painting of Mound City.

The maintenance department at South Holt has been conducting general maintenance of refinishing the gym floors and deep cleaning of the entire building.



Rob and Susan Liles, left to right - Are pictured in front of the plastic pipe that is sold at Liles Enterprises, LLC, at exit 99 of Interstate 29 in southern Atchison County. The company will be hosting a first anniversary celebration on Tuesday, August 4, from 10 a.m. to 3 p.m.

Liles Enterprises, LLC, to host anniversary celebration

One year ago, Rob and Susan Liles opened the doors to Liles Enterprises, LLC, at 31792 State Highway W (Fairfax, MO), at exit 99 of Interstate 29. The company will host a first anniversary celebration at its location on Tuesday, August 4, 10 a.m. to 3 p.m.

The celebration will feature two guest speakers and a sampling of vendors, with lunch of hamburgers and brats served from 11 a.m. to 1 p.m. Kurt Boeckman of the Missouri Department of Natural Resources and Darrick Steen of the Missouri Corn and Soybean Association will speak about topics of interest to farmers and contractors; however, the general public is also invited to the event.

Foley Equipment (CAT), Road Builders Machinery (Komatsu), Murphy Tractor (John Deere), Sitech-Central (Trimble), Port Industries and Midwest Trenchers will hold an Ag Vendor Fair and demonstrations throughout the day.

Liles Enterprises, LLC, offers Springfield Plastics pipe made of 100% virgin resin. Stop by the celebration, visit the Ag Vendor Fair and be a guest of the Liles family for the day.

Water boil advisory affects hundreds in area

A water boil advisory was issued on Sunday, July 26, for the city of Craig, MO; Holt County Rural Water; and the Village of Big Lake, MO. The advisory is due to a problem with a clear water pump at the water plant in Craig. On Friday evening, July 24, lightning hit the plant. The water plant manager is working diligently to repair the pump. Customers will be experiencing discolored water for several days.

According to City Hall in Craig, the water is not dangerous to consume, but the boil advisory is for the discoloration of the water. City Hall will notify customers when the advisory has been lifted.

Community Hospital-Fairfax awarded 5 stars

It is with great excitement that Community Hospital-Fairfax (MO) announces a new 5-star rating for patient experience from Medicare. The 5-star rating was released Monday, July 20, 2015.

Medicare developed the star rating system to give patients a quick and easy way to assess the patient experience at hospitals. The star rating is calculated by comparing one hospital's patient survey data to another hospital's patient survey information. More stars represents better quality care.

Hospitals receive stars based on their performance in several key areas of quality care. Nurse and physician communication,

responsiveness, pain management, discharge information and cleanliness represent just a few.

"We are one of the only hospitals in the region to receive 5 stars. We could not be more appreciative to our patients for the constructive feedback they provide and for choosing us for their care" explained Roger Steinkruger, Chief Executive Officer (CEO).

In the last star rating release in April, only 7% of 3,500 hospitals received 5 stars. The distribution of star ratings for the July release is not yet available.

To learn more about the 5-star rating system or to compare hospitals for patient experience, visit www.hospitalcompare.hhs.gov.



A look at the new decor - At Quackers Bar and Grill in Mound City shows off the new floors, painted walls and new lighting recently completed during renovations by owners Brad and Sonya Sutton. The Suttons are pleased with the results and look forward to serving area diners.

Quackers' renovations nearing completion

Quackers Bar and Grill has a new look. The popular restaurant in Mound City has been undergoing major cosmetic renovations the past several months. Brad and Sonya Sutton bought the business in early 2015 and began the remodeling process with the roof repair and worked their way down. The air conditioning unit on the roof was fixed along with roof repairs.

Moving down into the interior of the building, Sonya Sutton took over the facelift with the choice of new hardwood flooring throughout and tile at the bar and in the brand new bathrooms. The women's and men's bathrooms are beautifully decorated with all new sinks, vanities and toilets.

New cabinetry sits on the south wall of the restaurant for supplies and storage. The color

scheme is refreshing and compliments the brand new lighting throughout the building. Minimal wall decor accents the Ducks Unlimited prints on the walls. A new security door has been installed off of the deck.

Limitations within the infrastructure allowed for just a few changes in the kitchen at this time. Options are being looked into for continued upgrading in the kitchen.

Future plans take the renovations outside for concrete work around the building. The Suttons are planning on fixing the parking lot as well.

Brad and Sonya Sutton want to "offer an updated and clean atmosphere for everyone to enjoy the delicious food that is served at Quackers." The employees are excited and proud of the new look and are eager to serve the public.



Children tour Holt County Publishing print shop

The grandchildren of Joe and Susan Laukemper, Mound City - Visited the Holt County Publishing Company, Inc., print shop on Tuesday, July 21. The children witnessed the production of one of the 15 area newspapers that the publishing shop prints each week. Adam Johnson, right, owner, and publisher of the *Mound City News*, explained the process as the paper was printed. Pictured with Johnson are, left to right, Elizabeth Laukemper, Katie Laur, Cameron Laukemper, Drew Laur and Logan Laukemper. Elizabeth and Cameron are the daughters of Scott and Lori Laukemper of Mound City; Katie and Drew are the children of Derek and Maggie Laur of St. Louis, MO; and Logan is the son of Jon and Jo Mai Laukemper of Overland Park, KS.

Oregon man arrested after ATV accident

An Oregon, MO, man was charged with three counts following an ATV crash involving a minor child. According to the Missouri State Highway Patrol, Gregory D. Rukavina, 57, of Oregon was charged with 1) Driving while intoxicated - Class D Felony; 2) Assault 2nd Degree - Class C Felony; and 3) Failure to drive on the right half of roadway resulting in an accident.

On Wednesday, July 22, at 8:30 p.m., Rukavina was driving a Polaris Big Boss 400 6x6 All Terrain Vehicle (ATV) northbound on Trinity Road, seven miles southeast of Oregon in Holt County. The ATV traveled off the east side of the roadway, struck an embankment and overturned, coming to rest off the east side of the roadway.

Rukavina and a male passenger, Brody M. McDowell, 10, of Barksdale Air Force Base, LA, were transported by Atchison-Holt Ambulance to Mosaic Life Care in St. Joseph, MO, both in serious condition. Rukavina was exempt from wearing a safety device and McDowell was not wearing a safety device.

The ATV received minor damage and was towed by Double D Towing to the towing company's lot in Mound City.

The accident was investigated by Cpl. M.R. Heits, assisted by the Holt County Sheriff's Department, Oregon First Responders and Atchison-Holt Ambulance.

Missouri’s Great Northwest 6th Annual Wine Fest preparing to uncork the fun

Time is nearing for the “uncorking” of wine bottles for Missouri’s Great Northwest 6th Annual Wine Fest, scheduled for Saturday, September 19, in Mound City’s Griffith Park. The event will be hosted earlier this year than in past years in hopes of more pleasant temperatures and less scheduling conflicts for many. This event is showing much growth and new introductions in its sixth year of wine tasting, sampling and sales as a major fundraiser for Northwest Missouri Enterprise Facilitation (NWMEF). Most of the wineries involved in this wine fest have been deemed as winners in Missouri’s Governor Award Winning Wines. NWMEF is pleased that there will be 10 wineries offering new wines at this beautiful fall setting, in the north end of Mound City next to Mound City Development Corporation’s lavish vineyards. Each winery has its own unique taste and grape varieties and specialty named wines, some made with Mound City’s grapes.

In order to receive the crowd in a more orderly fashion, the registration procedures will be using two lines this year which accommodates the crowd that has grown to over 1,650 attendees. Tickets may be obtained in advance or at the gate by cash, check or credit card. Wrist bands must be worn by those sampling the wines and a driver’s license or valid identification indicating age must be shown at the registration desk. Each person sampling receives an etched wine glass.

Not only will the park feature prestigious wineries, but also several food booths will be presenting their delights such as White Rose Café - BBQ; Enchilada Lady - Mexican goodies; Wabash Jct. Restaurant, Stanberry, MO - gourmet soups and desserts; Knights of Columbus of Savannah will offer a variety of grilled sandwiches; and Rock Port Food Country will be offering cheese and fruit plates. There will be availability of homemade breads, grape pies and more all afternoon and evening. A reasonably priced gourmet sit-down dinner in the shelter house, 4:00 to 7:30 p.m., by Food Country Catering, will feature a choice of 3 entrées with a complete dinner meal. A full bar to include domestic beers will also be available by The Klub of Mound City.

An array of artisan booths, many returning and several new, will be available for the entirety of the day’s activities. Such items as handcrafted jewelry; home decorative items; fall flowers; pumpkins; health products; purses and bags; gift items; photography and artistry; handmade items; baked items; jams, jellies, and take-home food items; candles, statuary items, hand knitted items; and more can be purchased at reasonable prices. There are still spots available for booth set-ups.

Northwest Missouri Enterprise Facilitation board members are also offering two large raffle giveaways: a 50/50 raffle; and another large ticket offering of a wine refrigerator/cooler, the wineries’ Wine Cellar

Basket of 20 bottles of wine and certificates of at least \$100 value from each of the six counties involved in NWMEF’s services. The winners will be announced that evening. The winners need not be present to win.

Outstanding entertainment will fill the air on stage located close to the beautiful vineyard. Area musicians obtained thus far include: Trudy Baker, Fairfax. MO; Esther Raredon and Joe Stretch, Gladstone, MO; Devon and Mikaela Sons, Maryville, MO; Paul Grant and John Miller, Mound City, Frank Raredon, Overland Park, KS; and James Campbell Band, Mound City, will all be sharing their talents while taking their turn on the stage as well as other guest artists. A couple different “grape stomps” and view of the vineyards will occur in the afternoon. Tables and chairs are provided or bring your own lawn chairs. The entry fee is \$20 a person which includes samplings and an etched glass, \$10 non-consumers and minors and \$5 for children 12 and under.

For more information or questions concerning this event, contact Marilyn Alldredge, wine event coordinator, 660-744-3146.

NWMEF is a non-profit organization providing FREE business coaching services for new entrepreneurs and small business start-ups in northwest Missouri in the counties of Atchison, Holt, Andrew, Nodaway, Gentry, and Worth.

News from Tiffany Heights

In celebration of July being blueberry month, residents at Tiffany Heights in Mound City enjoyed making fried blueberry pies. They used pre-made dough, cut out rounds, added blueberry pie filling and added a pastry top, crimping it together. Everyone enjoyed making their own pie. Residents fried them, let them cool, and then added ice cream before the pies were enjoyed. Residents also discussed blueberries and the many facts about growing them in the U.S.

Pastor Rahim Brown led the Bible study group on Tuesday. Dee Ann Heck provided piano music. During the afternoon, the residents enjoyed playing a combination of tennis, badminton and a game of volleyball.

On Wednesday afternoon, the Tiffany Heights staff held its monthly in-service. This month Brett Tubbs, R.N., D.O.N., reviewed infection control and Shannon Tharp, L.O.P., went through the gait belt training with the nursing department. Employees recognized for service were Sandy Freeman, 23 years; Makala Bradbury, seven years; Josie Bomar, four years; and Mark Million, two years. The Missouri Healthcare Association recognized nurses’ aides for their contributions.

Fischer Tharp, son of Shannon and Bryan Tharp of Rock Port, MO, had been working on different aspects of his 4-H project for the last five years. Fischer had bred his Saint Bernards during this time and this year he is showing six puppies. The puppies are about five weeks old and just right to hold and pet. Fischer plans on selling his dogs again when they get older. He explained several interesting facts about this breed. Residents did not know that there are several types of fur, but they did know that they will be getting bigger. During the afternoon the residents enjoyed music with Pastor Paul Grant. Games of choice were encouraged on Saturday afternoon.

Karma and Bill Metzgar provided communion on Sunday morning. Seth Henson conducted morning worship. Afternoon church was provided by the Methodist Church with Dee Ann Heck at the piano, Ellen Kunkel playing the guitar and Pastor Rahim Brown giving the sermon.



(TOP)
Tiffany Heights resident, Beverly Quimby, left - Enjoyed a golf cart ride around Mound City on Friday, July 10. Cindy Heck, Tiffany Heights Activity Director, right, was the chauffeur.



A baby Saint Bernard - Enjoyed cuddles from Tiffany Heights resident, Beverly Quimby, on Friday, July 24. Fischer Tharp of Rock Port, MO, bred this breed as a 4-H project.

Car overturns on Hwy. 59 near Oregon

The Missouri State Highway Patrol investigated an accident on Thursday, July 23, at 5:29 p.m., six miles south of Oregon, MO, on US Highway 59 in Holt County. A 2000 Chevrolet Cavalier, driven by Taylor M. Davis, 19, of St. Joseph, MO, was southbound on Highway 59. Davis lost control in a curve and began to skid. The Cavalier traveled off the right side of the roadway, struck a ditch and overturned onto its top, coming to rest on its top facing south.

Davis, who was wearing a seat belt, was transported from the scene by Atchison-Holt Ambulance to Mosaic Life Care of St. Joseph with minor injuries. The vehicle was totaled and towed from the scene by Double D Towing of Mound City.

The investigating officer was Cpl. M.R. Heits, assisted by the Holt County Sheriff’s Department and Atchison-Holt Ambulance.

Mound City
NEWS
Published and Printed in
Mound City, Missouri

Established 1879
(USPS 364-920)

Published weekly on Thursdays and entered as periodical publication at the Post Office in Mound City, Missouri 64470.

POSTMASTER - Send changes of address to:
Mound City News, PO Box 175 • Mound City, MO 64470

511 State Street, PO Box 175 • Mound City, MO 64470
(660) 442-5423 • Fax (660) 442-5423
E-mail: moundcitynews@socket.net www.moundcitynews.com

Adam Johnson
Owner/Publisher

Jessica Lindsay, Office Manager - **Pam Kent**, Advertising
Sheri Wright, Reporter/Photographer

Jennifer Pardue, **Shelly Portman**, **Paige Buckminster**
Pete Webster, **Will Johnson**, Print Shop



Member
Missouri Press
Association

SUBSCRIPTION INFORMATION

\$33 PER YEAR

Holt, Nodaway, Andrew, and Atchison Counties.

\$38 PER YEAR

Elsewhere In Missouri and All Other States.

All Subscriptions Are Due In January

Copies available each week at our office and at:
Craig Country Store, Craig;

Lakeshore Grill, Prop-In, Big Lake;

Country Corner and Price's Grocery, Oregon;

Poor Boys Kwik Stop, Maitland;

Mound City Thriftway, Kwik Zone, George's Total,
& I-29 Travel Plaza in Mound City.



Rogers Pharmacy

Where State of the Art Technology Meets Old-Fashioned Customer Service

Please log on to rogersrx.com for on-line prescription refills and more.



607 State Street • Mound City, MO
660-442-3355 • Toll Free 800-962-0096



411 Main Street • Tarkio, MO
660-736-5512 • Toll Free 800-803-5630

2524 Frederick Ave • St. Joseph, MO
816-232-3348 • Toll Free 888-261-5400

34th Annual Gene Kent & Melvin Livengood Memorial FISHING DERBY

AUGUST 8th & 9th

Thurnau Wildlife Area

West of Craig, MO, on Highway 111



To enter or for more information:
Doug Livengood, Craig, MO 64437 - 660-562-7787

OBITUARIES

Owen “Keith” Reynolds, Sr.

Owen "Keith" Reynolds, Sr., 76, St. Joseph, MO, passed away Friday, July 17, 2015, at a local healthcare center.

Keith was born on December 31, 1938, in Corning, MO, to Olen and Katherine (Dankers) Reynolds, who are now deceased. He was a graduate of Craig High School.

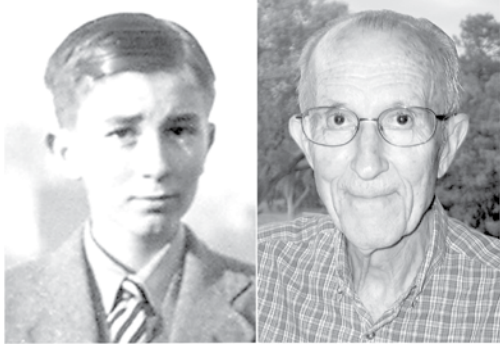
Keith was employed as a fertilizer plant manager of Farmland Industries for 43 years.

Keith was an avid bowler for 52 years and was known as the "Mayor" of Ridenbaugh. He loved socializing and did not know a stranger. He will always be remembered for his huge heart.

Keith is survived by his companion of 30 years, Dorothy Wilson; two daughters, Pam (John) Humbert and Debbie (David) Lehmer; two sons, Keith (Tami) Reynolds, New York, and Curtis (Barb) Lang, Arkansas; several grandchildren; and two stepchildren, Cassie Whisen and Mike Wilson.

Keith was preceded in death by a brother, Kenneth.

Services were held on Tuesday, July 21, at 1:00 p.m. at Heaton-Bowman-Smith and Sidenfaden Chapel in St. Joseph. A private family interment was held at the Corning Cemetery, Corning. Memorial donations may be made to the Alzheimer's Foundation. Services were under the direction of Heaton-Bowman-Smith and Sidenfaden.



Roy F. Barton, Jr.

Roy Franklin Barton, Jr., who was known during his years in Mound City as “Frank”, was born in Manila in the Philippine Islands while his father, Roy F. Barton, Sr., was practicing dentistry there. After relocating to California, his parents divorced and he went with his mother to live in Los Angeles, CA. His mother, Mound City native, Mabel (Wehrli) Barton, sent him alone by train to Mound City at age nine to be raised by her brother, Roy Wehrli, and wife, Janet (Ringold) Wehrli.

Frank attended school in Mound City and graduated in the class of 1941. He was a mischief-maker during his formative years, famous throughout the town for his pranks. Frank was banned from the town movie theater after setting a garter snake loose inside and rolling rotten eggs down the aisles. He helped his Uncle Roy at the Wehrli grocery store downtown, but he told stories years later of stuffing potatoes into the exhaust pipes of customers’ cars.

After Frank’s years in Mound City, he left for college for a year before joining the U.S. Army Air Force in January of 1943. After the war, he went to California where he married Florence Behler and they had two daughters. Florence died of cancer when the girls were young; Frank remarried for a brief time, divorced, and then eventually found happiness again when he married Marian (Pennington) Conners in 1973. Frank and Marian continued living in Glendale and finished raising his daughters, Donna and Cheryl, and Marian’s youngest son, Dave.

Frank retired in 1986 after 32 years as a tool and die maker in Los Angeles. When he and Marian left southern California, they relocated to Prescott, AZ, where they lived for 20 years. Frank enjoyed many different hobbies and activities over the years; his favorites during the Arizona years were caving and hiking. He visited Mound City and his cousin, Hugh Wallace, a few times for class reunions or when he’d be nearby after attending the annual National Speleological Society (NSS) caving convention. Frank continued to keep in touch with Jack Aeby and Mary Dean (Holmes) Borns from his school days in Mound City. Frank did not know it, but Jack Aeby predeceased him by less than two weeks.

Soon after Marian’s death in 2012, Frank moved to Arroyo Grande, CA, to be near his daughter, Cheryl. He lived there independently until two months before his death. Frank died unexpectedly, but peacefully, in his sleep a day after he was hospitalized in Arroyo Grande for pneumonia.

Frank was preceded in death by his parents; his Uncle Roy and Aunt Janet Wehrli; half brother, Harold D. Barton; wives, Florence and Marian; and great-granddaughter, Sydney.

Frank is survived by his half sister, Erica Barton, of St. Petersburg, Russia; daughters, Donna Eitel and husband, Charly, of Eureka, CA, and Cheryl Barton-Petrie and husband, Vince, of Arroyo Grande; stepsons, Pat Conners and wife, Linda, of Port Angeles, WA, Dan Conners and wife, Robin, of Swall Meadows, CA, and Dave Conners and wife, Angela, of Prescott; five grandchildren; and four great-grandchildren.

Contributions in Frank’s memory can be made to the Sierra Club (415-977-5653) or to a favorite charity. There will be a memorial “Roy Hike” to the top of Thumb Butte in Prescott in October.

Donald H. Hunziger

Donald Howard Hunziger was born to John and Doris (Burrier) Hunziger on January 7, 1942, in Oregon, MO. He attended White School and then graduated from Oregon High School in 1960.

After graduating from the University of Missouri in 1964 with a BS degree in Agriculture, Don served in the U.S. Army until 1966. In 1971, he graduated from the University of Missouri School of Veterinary Medicine. Don practiced from May, 1971, until his retirement in March, 2015.

Don was a member of the Forest City, MO, and Fillmore, MO, Lodges and the Harris E. Petree American Legion Post 190. He had the ability to talk with anyone about anything. His favorite hobby was being the “pit crew” for his son, Mark, on the Nodby-racing car.

Don passed away on Monday, June 29, 2015, at his home in Humboldt, KS. He and his wife had recently moved there from Oregon.

Don was preceded in death by his parents. Survivors include Don’s wife of 48 years, Annamarie; sons and daughters-in-law, Mark and Becky Hunziger of Humboldt, and Jerry and Femie Hunziger of Tulare, CA; sisters and brothers-in-law, Sandra and Calvin Smith and Ellen and Joe Stinziano; two grandsons; and four stepgrandchildren.

Graveside services and inurnment will be held on Saturday, August 1, 2015, at 1:30 p.m. at Maple Grove Cemetery in Oregon. Care is entrusted to Chamberlain Funeral Home and Monuments, Oregon. Memorials may be directed to the Frank and Iris Sweaney Education Fund in care of the funeral home. Online condolences may be left at www.chamberlainfuneral.com.



Your Full-Service Memorialist Since 1935

- Monuments
- Markers
- Mausoleums
- Plaques
- Lettering
- Cleaning
- Custom Designing

Van Vickle Monuments


1717 Frederick St. Joseph
Toll Free 1-877-232-5882

Northwest Muddy MO Catfish Tournament set for August 29

The Northwest Muddy MO Catfish Tournament will be held on Saturday, August 29, at the Thurnau Conservation Area (Thurnau Landing) west of Craig, MO.

For information, call Frederick Rhoades at 660-624-3292 or Jordan Stoner at 660-442-6253.

LILES ENTERPRISES IS CELEBRATING THEIR 1 YEAR ANNIVERSARY!



At Liles Enterprises, we are proud to offer Springfield Plastics drainage pipe made of 100% virgin resin. 100% virgin resin means you get a consistently strong pipe at every single inch. Without 100% virgin material, weak spots could occur in your pipe leaving it vulnerable to cracks. Why spend money to fix what wasn't done right the first time?

✓ Consistent Material

✓ No Blowouts

✓ High Flexibility

✓ No Cracks When Unrolling

✓ Minimal Couplers in a Roll

✓ No Soft Spots in Pipe

Liles Enterprises, LLC

31792 State Highway W. • Fairfax, MO 64446 • (660) 920-9190

Nutrition site news

Volunteers at the Nutrition Site in Mound City during the week of July 20-24 were: Wayne White, Diane White, Hank Just, Donna Kurtz, Marilyn Buntz, Kim Kling, Phyllis Ball, Jan Heck, Ellen Kneale, Jerry Kneale, Jim Heck, Frances Herbert, Paycee Slusher, Cole White, Rowena Boswell, Barb Heitman, Velma Dudeck, Teresa Russell, Betty Russell, Mary Belle Carter, Bill Golden, Linda Hester, Dee Ann Heck, Lela Boyd, Tracy Jordan and Jerry Zembles.

Delivering meals the week of August 3-7, 2015, will be:

Craig - Gene and Beverly Miller.

Mound City - Monday and Tuesday - Kim Kling; Wednesday - Dee Ann Heck and Corey and Danielle Gordon; Thursday and Friday - Christian Fellowship Church.

Oregon - Monday through Friday - Oregon Methodist Church.

Forest City - Monday and Tuesday - Hank Just; Wednesday and Thursday - Oregon Care Center; Friday - Hank Just.

The upcoming menu at the site is:

Monday, August 3 - Hamburger and rice casserole, broccoli, carrots, bread and butter and peaches.

Tuesday, August 4 - Pork chop, pickled beets, mixed vegetables, applesauce and hot rolls.

Wednesday, August 5 - Chicken fillet on bun, seasoned potatoes, peas and sliced tomatoes.

Thursday, August 6 - Roast beef, potatoes and gravy, green beans, cucumbers and onions, hot rolls and pineapple.

Friday, August 7 - Spaghetti and meat sauce, lettuce salad, garlic bread, juice and fruit cocktail.



“Meal Champions”
at the Mound City Nutrition Site


Tiffany Care Centers • Mound City Lumber • Community Hospital-Fairfax • Loretta Morris • Chamberlain Funeral Home • Rogers Pharmacy • Ernest and Linda Hester • Mound City First Christian Church • Dr. Carpenter • Farmers State Bank • Tom and Paula Kennish • Faith Fellowship Church • United Methodist Church • Mary Belle Carter



Holt County Farm Bureau Annual Meeting/Appreciation Dinner

Tuesday, August 11, at 6 p.m.
TJ Hall Building, Oregon, MO
RSVP by Friday, July 31, by calling 660-446-2310

A Century Farm family will be honored.
Remarks by State Rep. Allen Andrews and U.S. Rep. Sam Graves



You may be entitled to 22 cents to \$1 per Bushel Back!

In the past 24 months China rejected more than 5 million tons of U.S. Corn due to MIR-162 unapproved trait marketed by Syngenta.

The NGFA estimates that damages to **ALL** corn farmers exceeds 5 billion dollars...that's between 22 cents to over \$1 per bushel in 2013 - 2014. (National Grain & Feed Association)

19,500 Farmers Strong & Growing!

Tues. Aug. 4	CITY	LOCATION
8:30 AM	Rock Rapids	Subway
11:00 AM	Hawarden	Pizza Ranch
2:00 PM	Kingsley	Shennon's on the Green
5:00 PM	Sloan	B & R's Pizza Post

Wed. Aug. 5	Missouri Valley	Rand Center
8:30 AM	Glenwood	City Hall Chambers
11:00 AM	Hamburg	Blue Moon Grill
2:00 PM	Maryville	Holiday Inn Suites

Thurs. Aug. 6	Craig	American Legion
8:30 AM	Villisca	Community Room
11:00 AM	Creston	Supertel Inn
2:00 PM	Stuart	Ammeric INN

Friday Aug. 7	Audubon	Tivoli Inn
8:30 AM	Sac City	Sac Co. Cattle Co.
11:00 AM	Sheldon	Pizza Ranch

Go To LostCornIncome.com or Call Toll Free 855 - 567- 8267

DIRECT TV Ch. 227 Daily at 6:30AM DISH Ch. 221 at 7AM

Ben Ennen
Fenchel Doster & Buck PLC
107 N. Harlan Street
Algona, IA 50511

Dan Homolka
Daniel M. Homolka, PA
Minneapolis Minnesota
Hutchinson Minnesota

No Cost & No Risk to You!

Area Church Information

BIG LAKE

Big Lake Baptist Church
213 Lake Shore Dr., Craig, MO
Dick Lionberger, Interim Pastor
Sunday School, 9:30 a.m., Worship Service, 10:30 a.m.

CRAIG

Craig Presbyterian Church
Worship Service, 9:15 a.m. - *Cliff McNair, Pastor*
Craig Community Church of the Nazarene
105 S. Ensworth Street • *Keith Knaak, Pastor*
Sunday School, 10 a.m., Worship Service, 11 a.m.
Wed. Night Bible Study, 5:30 p.m., Wed. Kingdom Kids, 3:30-5:00 p.m.,
Wed. Night Youth Group, 6:30-8:00 p.m.

Church of God

Sunday School, 10:00 a.m., Worship, 11:00 a.m.

FILLMORE

The Lighthouse
South I-29, Exit 65 • *Pastors Tim and Faith Uzzle*
Sunday Worship: 10:00 a.m., Children's Sermon 10:30 a.m.
For more info.: 816-564-8234 • www.fillmorelighthousechurch.org

GRAHAM

Graham Union Church
Sunday School, 9:30 a.m., Morning Worship, 10:30 a.m.
Randy Grimm, Pastor

United Methodist Church

Connie Ury, Pastor
Sunday School, 10:15 a.m., Worship, 9 a.m.

MAITLAND

First Christian Church

4th and Ash • *Bill Gazaway, Pastor*
Sunday School, 9:15 a.m., Worship Service, 10 a.m.
Sunday Night Worship, 7 p.m., Wed., Youth Rallies, 7 p.m.

United Methodist Church

217 S. Maple Avenue • *Connie Ury, Pastor*
Worship Service, 10:15 a.m.

MOUND CITY

Christian Fellowship

18080 Hwy. 59 • *Jim Broun, Minister*
Sunday School, 9:30 a.m., Worship, 10:30 a.m.

Holy Trinity Lutheran Church

1413 Nebraska St. • *Rev. Brian Lemcke*
Worship Service, 10:30 a.m.
Bible Class or Sunday School, 9:15 a.m.

First Christian Church

402 E. 5th Street • *Paul Grant, Pastor*
Sunday School, 9:30 a.m., Worship, 10:30 a.m.
Wednesdays- Bible Study, 12 p.m.
www.firstchristianmoundcity.org

Mound City Baptist Church

1308 Savannah Street • *Pastor Nathan Lowe*
Worship Service - 9:30 a.m.
Breakfast Refreshments & Sunday School - 10:30 a.m.

Mound City United Methodist Church

312 E. 7th St. • *Assoc. Pastor Rahim Brown*
Sunday School, 9 a.m., Sunday Service, 10 a.m.

New Liberty Baptist Church

The little church with a big heart.

Will Haer, Interim Pastor • County Road 140
Sunday School, 9:45 a.m., Worship, 10:30 a.m.
816-596-1152 • 660-683-5692

New Life Apostolic Assembly

U.P.C.I. - 307 E. 6th, Mound City • *Pastor Scott Jordan*
Worship Service, 11 a.m.
Life Night Bible Study & Revolution Youth Group
Thursdays, 6:30 p.m.
www.newlifeupci.org - 660-442-3441

Benton Church

An 1880s Church in the 21st Century • *Pastor Jim Broker*
1/2 mile south of Squaw Creek Truck Plaza on Hwy. BB
Worship Service at 10:00 a.m., First Sunday of Month
For information, call Pastor Jim Broker at 660-442-5405.

OREGON

St. Patrick's Catholic Church

303 Grand, Forest City • *Father Peter Ullrich, OSB*
Pastor and Parish Administrator

Faith Fellowship Church

27772 Hwy. 59, Oregon • *Minister Dan Cravatt*
Sunday School - 9:30 a.m. Worship - 10:30 a.m.
Area Youth Group - Wednesdays - 5:00 p.m.
660-446-2031

Oregon Church of the Nazarene

207 W. George • *Keith Knaak, Pastor*
Sunday School, 8 a.m., Worship Service, 9 a.m.

New Point Christian Church

24135 Stone Hill Rd. • *Brian Buck, Minister*
Sunday School, 9:30 a.m., Worship, 10:30 a.m.
Fellowship Dinner, 4th Sunday of month following church

REGIONAL

River of Hope Fellowship

Hwy. 159 & I-29, Mound City
Pastor David Showalter - 660-442-6305 • Pastor Will Certain - 816-824-8566
Sunday School, 9:15 a.m., Worship, 10:30 a.m.
Youth Group Every Sunday - 6-8 p.m.

SKIDMORE

St. Oswald's-in-the-Fields Episcopal Church

30996 X Avenue, Skidmore, MO
2nd Sundays - 11 a.m., Morning Prayer service by Lay Reader
4th Sundays - 11 a.m., Eucharist Service



Employees of Community Hospital-Fairfax (MO) - Filled new backpacks with school supplies during the Back-to-School Fair in Holt County at the Extreme Fireworks building near Mound City on Friday, July 24. Pictured are, left to right, Tabitha Wintz, Bonnie Erickson and Cathey Kling.



New backpacks lined the tables - In the Extreme Fireworks building near Mound City before Holt County's Back-to-School Fair began on Friday, July 24. Each backpack was filled with school supplies, toiletries and a \$10 gift card for shoes to be distributed to qualifying children. Community Hospital-Fairfax (MO) hosted the annual event.

CH-F serves 109 at Back-to-School Fairs in Holt and Atchison counties

On Friday and Monday, July 24 and 27, Community Hospital-Fairfax (CH-F) of Fairfax, MO, was delighted to host the 2015 Holt County and Atchison County Back-to-School Fairs. The two fairs served 109 children. The Back-to-School Fairs are a collaborative effort between Community Services, Inc., CH-F and many donors who make the purchase of school supplies possible.

Students attending the fairs were treated to a new backpack filled with supplies from pencils to notebooks to brand new erasers. Each student received a \$10 gift card for shoes and a bag of toiletries for their family. In addition to supplies, many other educational opportunities were available for children including learning about healthy diets and good habits for a new school year.

The Back-to-School Fair was made possible by generous contributions from community members. The outpouring of support was incredible this year making it possible to supply each child with more supplies than ever.

For more information about the Back-to-School Fair, how to qualify or be a donor, contact Ann Schlueter at (660) 686-2317 or visit www.FairfaxMed.com.

Missouri gears up for back to school sales tax holiday

The Missouri Department of Revenue has set the back to school sales tax holiday to begin on the first Friday in August and continue through the following Sunday. The three-day holiday begins at 12:01 a.m. on Friday, August 7, and runs through Sunday, August 9. Certain back-to-school purchases, such as clothing, school supplies, computers and other items as defined by the sales tax holiday statute are exempt from sales tax for this time period only.

Area towns that have opted out of participating in the tax holiday are Savannah, MO, and Skidmore, MO. All other towns in northwest Missouri, including Holt County cities and St. Joseph, MO, will observe the sales tax holiday exemption.



Thompson/Flanders to wed

Mary Elizabeth Thompson and Scott Andrew Flanders of Cameron, MO, will be married on Saturday, September 5, 2015, in a private ceremony in Cameron.

Mary Elizabeth is the daughter of Rosann Thompson of Cameron and the late Kent Thompson. She is the maternal granddaughter of Carolyn Kent, Mound City, MO, and the late Gene Kent; and the paternal granddaughter of the late Jim and Peggy Thompson.

Scott Andrew is the son of Sonya Price of Kearney, MO, and Mark Flanders of Cameron. He is the maternal grandson of Charles and Sharon Martin, Maysville, MO, and Bill and Carlene Bray, St. Joseph, MO; and the paternal grandson of Ben and Yvonne Flanders, Cameron.



Community Blood Drive draws a crowd in Mound City

Mary Belle Carter, left, a veteran at community blood drives

- Explains how it's done to newcomer, Cheri Knowles, right. Both ladies from Mound City arrived early at the Mound City First Christian Church for the Community Blood Center of Kansas City's blood drive on Monday, July 27. Mary Belle is just three units short of contributing 10 gallons of blood in her lifetime. The blood drive was sponsored by the National Honor Society of Mound City R-2.



Corey Olauson, left, Mound City - Begins the process of donating blood on Monday, July 27. Mound City R-2's National Honor Society sponsored the blood drive conducted by the Community Blood Center of Kansas City. According to Karlene Harrison, the sponsor of the National Honor Society chapter, 26 donors came to the drive and 24 units of blood were donated.

COMMERCIAL OR PERSONAL
Printing

Mound City
NEWS



511 State, Mound City, MO
660-442-5423

Craig R-III Board of Education meets; school begins August 19

The regular meeting of the Craig R-III Board of Education was held Monday, July 20, at 7 p.m. in the office of the secretary to the superintendent. Members present were Mark Faller, Samantha Grist, Nicole Hinrichs, Keith Knaak, Rob Liles, Rebecca Monroe and Mike Wright. Others present at the meeting were Superintendent Mike Leach, Principal Ken Grove and Secretary Mindi Voltmer.

The meeting was called to order by President Rebecca Monroe. After premilinary and routine items, Superintendent Leach presented the June 2015 Financial Report.

In new business, the board approved to set the 2015 Tax Rate Hearing for Monday, August 17, at 7 p.m. Superintendent Leach presented the current tuition rate of \$4,000.

The board approved the motion to keep the tuition rate at \$4,000. Leach presented milk bids for the 2015-2016 school year. It was approved to accept the bid from Anderson Erickson Dairy.

Principal Grove presented the student handbook with proposed changes, with the board approving the handbook. Mindi Voltmer was approved as the Custodian of Records. Superintendent Leach presented a proposal allowing monthly transfers from Fund I to Fund II. The board approved the motion to allow the bookkeeper to make monthly transfers from Fund I to Fund II as needed. The board approved a motion to approve Federal Program Budget Participation.

In administrative reports, Principal

Grove announced registration for grades 9-12 is on Tuesday, August 4, from 9:30 a.m. to 3 p.m. Junior high students will register on the first day of school. New students may register Thursday, August 6, or any other time before school starts. Teacher in-service is Monday and Tuesday, August 17-18, with the first day of school on Wednesday, August 19. Back-to-School Night is Monday, August 17, from 5:30-7 p.m. Practice for fall sports starts Monday, August 3.

Superintendent Leach gave an update on maintenance projects and discussed possible future maintenance and improvement projects.

The meeting adjourned at 8 p.m.

Holt County SWCD/NRCS offers new incentive payments for cover crops

The Holt County Soil and Water Conservation District's (SWCD) Cost-Share Program is now offering new incentive payments for cover crops. Many cooperators in Holt County have expressed interest in cover crops because of their valuable benefits but some cooperators have been deterred from trying them because of financial considerations.

Cover crop benefits in this area include soil erosion protection during heavy storms, loosening of the topsoil, increased water infiltration, and suppression of winter annual (henbit) and hard to control weeds like water hemp. With a large number of prevented planting acres this year, there is an opportunity to use cover crops to provide nitrogen to the 2016 cash crop. The Holt County SWCD cover crop practice pays \$30/acre for cover crop seedings that include one or two cover crop species or \$40/acre for cover crop seedings that include three or more species. There is a lifetime payment maximum of \$20,000 per operator.

Contact the SWCD/Natural Resources Conservation Services (NRCS) office at 660-442-3173, ext. 3, to sign up or learn more about the new Cost-Share practice or cover crops in general. The USDA and Holt County SWCD are equal opportunity employers.

Atchison County Fair

August 1, 2015

6:30 p.m. Start Time

TRUCK & TRACTOR PULL

Atchison County Fair Grounds in Rock Port, MO

6500 NON TURBO

8500 PRO FARM

6500 COMBO CLASS

8500 A PUMP

UNLIMITED OPEN

9000 P PUMP

2.5 DIESEL PICKUPS

TRI COUNTY SWEEPSTAKES

8500 LIMITED PRO

6200 PRO STOCK 4X4

Added Money

\$5000

Sanctioned by the NWMTPA.

\$10 Admission 10 & Under FREE

Sled: Oil Busch

Tractor Pull Contact Info: Jeff Riley (660) 623-4938 Dustin Lamberson (712) 308-4063 Steve Joesting (660) 744-4324

Graves introduces bill helping make English the official language of the U.S.

U.S. Representative Sam Graves of Tarkio, MO, recently introduced a bill that will strengthen the case to make English the official language of the United States. Graves' bill, the Cost of Services and Translations (COST) Act, will require all federal agencies to report the amount they spend providing services in languages other than English.

"America is a collection of people from different races, religions, and backgrounds – that is part of what makes us great," Rep. Graves said, "but a common language is what brings all of those people together to form a community."

"Despite overwhelming support for the United States to adopt English as its official language, we have still not taken that important step," Rep. Graves continued. "My bill will strengthen the case to make English our official language and will save the federal government millions of dollars every year."

More than 90 percent of countries have an official language, while 31 have adopted English as their sole official language. Public opinion has consistently shown that a majority of Americans support making English the official language of the United States.

"U.S. English, Inc., the nation's oldest and largest non-partisan citizens' action group dedicated to preserving the unifying role of the English language in the United States, with over two million active members, enthusiastically supports this legislation introduced by Rep. Sam Graves," said U.S. English Chairman Mauro E. Mujica. "The COST Act will reduce government waste, protect taxpayers' hard earned money, and demand government transparency by informing the public about the growing costs involved and associated with producing government documents and other services in multiple languages," concluded Chairman Mujica.

Under Obamacare, U.S. call centers are required to provide assistance in 150 different languages, while an Office of Management and Budget report projected that \$300 million is spent providing non-English translations in doctor's offices and hospitals across the country. The COST Act would bring to light the actual expense of providing services in multiple languages, giving taxpayers greater insight into how their dollars are being spent by the federal government.

This Week's History

From the *Mound City News* archives

50 Years Ago - 1965

- Interstate 29 was still miles away from Mound City, but plans were progressing on the super highway, which would "skirt" this town. The contract for the construction of "another stretch", which would extend I-29 into Holt County, was expected to be let in the fall. The State Highway Department announced that one of its seventeen double rest areas in the state would be situated just two miles south of Mound City.

- The 70 year-old Craig Reunion was being staged for the weekend. Afternoon and evening programs were planned for all four days, with the annual homecoming celebration being sponsored by the Story-Hardin American Legion Post No. 164. Hale's Rides and Shows of Tomorrow were to be on the midway.

- The Rader's Machine Shop was moving to a new building which was constructed on Highway 59 at the north edge of Mound City. Nauman Construction Co. built the new building which would provide much added shop and storage space, in addition to ample parking and display areas on the outside.

25 Years Ago - 1990

- State Treasurer Wendell Bailey was in Holt County to present awards to several residents and to announce a \$500,000 MoBucks commitment to a new water system at Big Lake. Big Lake Village Attorney Robert Shepherd said the three-year, low interest loan would be used to help pay for connecting the village to the Craig water system. Three individuals and a sorority won "Missouri's Best" certificates. Beta Sigma Phi was recognized for the sorority's support of sports, education and the arts by sponsoring the annual Market Square Day; Beverly Voltmer was honored for her leadership and service in promoting youth activities; David Monk was honored for donation of his time and leadership to better the community while operating a growing business; and Zella Hutton was honored for her career in education and her volunteer work with students and the elderly.

- Donovan and Marcus Kemerling, students of Hap Ki Do at David Duvall's Yu's Academy of Martial Arts in Maryville, were promoted to the rank of Yellow Belts.

10 Years Ago - 2005

- A rousing style of country music filled the State Theater when Bruce Micheal Hall and his twin brother, Seth, brought their band, Rowdy, to town. They came from Los Angeles to visit relatives here, including their mom, Toni Smith, and dad, Larry Hall.

- The Quimby family entry in the Craig Reunion parade, "Still Fighting for Freedom", was the Grand Prize winner. Some 60 to 70 Quimby family members were part of the parade entry. They displayed a list of 43 family members who had served or are serving in the armed forces.

- Blaire Heck, 14, Mound City, was named the Missouri Health Care Association Teen Volunteer of the Year. She had spent more than 90 volunteer hours in the prior year at Tiffany Heights nursing home in Mound City.

- Shirley Jackson, Mound City, a volunteer at Tiffany Heights, was named the Missouri Health Care Association District 2 Volunteer of the Year. A volunteer for more than 14 years, she received the award in recognition of her commitment to the residents of Tiffany Heights.

What do you remember?

The Holt County Historical Society is looking for answers to these questions that have been submitted by researchers.

MEET YOUR FRIENDS AT THE MAITLAND FAIR!

August 27-31, 1917

A ticket to see the dare devil aeronaut, Walter a height of 4,000 feet and watch him do the fair program book announcing the livestock given to the society by the late Helen Kurtz and Pantry, Fine Arts, Household and Fancy ey was \$.25 to \$1.00.

A founder of the Holt County Historical-lifetime member and served as treasurer for MO, area and lived in Mound City. She and ing to restore and repair the two Fortescue, County museums.



ter J. Carr, of New York City, do a stunt from "Falling Aviator"! This ticket, along with the displays, agricultural exhibits, and races was Hatch. Other competitions included Kitchen Fabric and Children's Work. Most prize mon-

cal Society in 1972, Helen was also a charter many years. She grew up near the New Point, her husband, John, worked long hours help-MO, school buildings that became Holt

RECENT QUERIES:

A researcher from Nebraska spent a couple of days in Mound City last week searching for Kunkel ancestors. After gleaning information from the Genealogy and Research Center files, he spent an afternoon, accompanied by Norma Jean McCurry and Nathanael Markt, searching the Oregon Maple Grove, Cowan and Nickols Grove cemeteries to get photographs of family tombstones.

THE HOLT COUNTY HISTORICAL SOCIETY

612 STATE STREET • PO Box 55 • Mound City, MO 64470

The society has a new e-mail address: hchs1972@gmail.com

"Heritage of the past to the present generation and to preserve for the future"
612 State Street in Mound City
Open Every Wednesday, 9 a.m.-3 p.m.

Holt County real estate transfers

Roberta Feist to William Hutting, Craig, MO: The Southwest Quarter of the Northwest Quarter of Section 34, Township 63, Range 40 West of the 5th P.M. except a 15 acre tract off of the North side of said tract, see record for full description.

Wanda Verbick to Jeffrey Verbick, Ruth Ann Morris and Jennifer Verbick, Forest City, MO: Commencing 53 1/3 rods South of the Northeast corner of Section 24, Township 60, Range 39, see record for full description.

Wanda Verbick to Wanda Verbick, T.O.D., Forest City, MO: A tract of land in fractional Sections 4 and 9, in Township 58 North, of Range 37 West, see record for full description.

Melvin Douglas Meng to Melvin Douglas Meng, T.O.D., Oregon, MO: Tract I: All of the East 100 rods of the Northwest Quarter of Section 1, Township 59, Range

38, and the South 41.36 rods of the Southwest Quarter of Section 36, Township 60, Range 38. Tract II: Also a tract of land commencing at a point 60 rods South of the Northwest corner of the Northeast Quarter of said Section 1, see record for full description. Tract III: Commencing at a point 10.34 chains North of the Southeast corner of the Southwest Quarter of Section 36, Township 60, Range 38, see record for full description. Tract IV: The North 63.33 1/3 rods of the Southeast Quarter of Section 35; also the North 63.33 1/3 rods of the West 44 rods of the Southwest Quarter of Section 36, see record for full description. And also, Tract I: The Northwest Quarter of the Southeast Quarter of Section 2, Township 59 North, of Range 38 West of the 5th P.M. Tract II: All that part of the following described tract lying South and West of the County Road:

Commencing at the point 62 rods North of the Southwest corner of the East Half of the Southeast Quarter of Section 2, and running thence North 28 rods, see record for full description.

Matt Younger to Thomas J. Stoecklein and Rebecca A. Stoecklein, Oregon, MO: The East Half of Lot 5; the East Half of Lot 8, and adjoining tract lying East, both in Block 47, in the original town of Oregon.

Billie Paul Sharp Revocable Trust, by trustee, and Carol Marie Sharp Revocable Trust, by trustee, to Kenneth Bahr, Forest City, MO: A tract in fractional Section 2, Township 60, Range 39.

Stephen C. Milne and Brenda Milne to Stephen C. Milne, T.O.D., and Brenda Milne, T.O.D., Oregon, MO: Tract I: The North Half of the Southwest Quarter of Section 5, Township

59 North, of Range 37 West of the 5th P.M. Tract II: Grantors' undivided two-thirds interest in all of the South Half of the Southwest Quarter of Section 5, Township 59 North, of Range 37 West of the 5th P.M.

Cathy Clay to William H. Clay II to Cathy A. Clay Restated Trust, Kansas City, MO: Tract I: The Northwest Quarter of the Southwest Quarter, and the South one-half of the Southwest Quarter of Section 1, Township 62, Range 39; and the Northwest

Quarter of Section 15, Township 62, Range 38. Tract II: The Northwest one-fourth of Section 15, Township 62, Range 38. Tract III: The Southeast Quarter of the Southeast Quarter of the Southeast Quarter of Section 22, the Northeast Quarter; the East Half of the Southwest Quarter, see record for full description.

Carolyn Johns to Carolyn Johns, T.O.D., Mound City, MO: All of the East one-half of the following described real estate: a parallel tract of land 20 feet

in width off the South side of Lot 8 in Block 2 of McCoy's Addition to Mound City, see record for full description.

Ian S. White and Brandy White to Miles C. Clifton, Mound City, MO: The West Half of Lot 6 and the South 13 feet 4 inches of the West Half of Lot 3, both in Block 20, in the original town of Mound City.

In Re: Survey for Phil Noel to Phil Noel: A tract of land in Section 11, Township 60, Range 38.

Mound City Police Department report

The Mound City Police Department in Mound City submitted the following civil and criminal responses for the week of July 14-19, 2015. These include:

July 14, 2015

16:40 - Parking issue at the Mound City pool parking lot. Handled by officer.

17:18 - Citizen reported phone harassment. Report taken.

July 15, 2015

18:46 - Citizen reported medical issue. Handled by officer and the Atchison-Holt Ambulance.

July 16, 2015

16:46 - Atchison-Holt Ambulance requested officer for lift

assist. Handled by officer.

July 17, 2015

16:59 - Parking issue at the Mound City pool parking lot. Handled by officer.

18:23 - Traffic enforcement stop - Turn signal/Speeding.

18:46 - Outside agency assist in Holt County - Motor vehicle accident.

20:15 - Citizen reported loss of water at residence. Handled by officer and the Mound City Water Department.

21:41 - Suspicious vehicle at business. Business checked. Handled by officer.

July 18, 2015

14:03 - Citizen reported domestic assault. Report taken. Handled by officer.

17:34 - Outside agency assist in Holt County - Semi lost load.

17:55 - Traffic enforcement stop - Secured load.

23:58 - Griffith Park in Mound City - Property damage. Report taken. Handled by officer.

July 19, 2015

19:20 - Citizen reported issue with neighbor kids. Handled by officer.

19:50 - Emergency message relay. Message relayed to party.

Holt County traffic violations

The following traffic violations that occurred in Holt County were paid through the Missouri Judiciary Fine Collection Center:

John Douglas Baxter, Blue Springs, MO - Exceeded Posted Speed Limit (Exceeded By 11-15 Mph). Case filed on May 25, 2015. Case disposed on July 20, 2015. Fine Amount: \$55.50.

John Douglas Baxter, Blue Springs, MO - Driver/Front Seat Passenger Fail To Wear Properly Adjusted/Fastened Safety Belt. Case filed on May 25, 2015. Case disposed on July 20, 2015. Fine Amount: \$10.00.

Emma Jane Drews, Omaha, NE - Exceeded Posted Speed Limit (Exceeded By 20-25 Mph). Case filed on June 6, 2015. Case disposed on July 22, 2015. Fine Amount: \$155.50.

Jake Andrew Haarberg, Littleton, CO - Exceeded Posted Speed Limit (Exceeded By 20-25 Mph). Case filed on June 19, 2015. Case disposed on July 16, 2015. Fine Amount: \$155.50.

Bryan Shane Hill, McAlester, OK - Exceeded Posted Speed Limit (Exceeded By 11-15 Mph). Case filed on June 27, 2015. Case disposed on July 20, 2015. Fine Amount: \$55.50.

Coleen G. Koehler, Wahoo, NE - Exceeded Posted Speed Limit (Exceeded By 11-15 Mph). Case filed on June 17, 2015. Case disposed on July 17, 2015. Fine Amount: \$55.50.

Banhlang Meuangkhot, Holland, MI - Exceeded Posted Speed Limit (Exceeded By 11-15 Mph). Case filed on May 24, 2015. Case disposed on July 21, 2015. Fine Amount: \$55.50.

William Daniel Dean Nelson, Craig, MO - Driver/Front Seat Passenger Fail To Wear Properly Adjusted/Fastened Safety Belt. Case filed on July 2, 2015. Case disposed on July 18, 2015. Fine Amount: \$10.00.

Tina M. Nocita, Omaha, NE - Exceeded Posted Speed Limit (Exceeded By 16-19 Mph). Case filed on May 25, 2015. Case disposed on July 16, 2015. Fine Amount: \$80.50.

Ashley Monique Pinkerton, Nashville, TN - Exceeded Posted Speed Limit (Exceeded By 20-25 Mph). Case filed on June 29, 2015. Case disposed on July 22, 2015. Fine Amount: \$155.50.

Celine Marie Porrevecchio, Kansas City, MO - Exceeded Posted Speed Limit (Exceeded By 16-19 Mph). Case filed on July 2, 2015. Case disposed on July 20, 2015. Fine Amount: \$80.50.

Justin G. Rother, Craig, MO - Pursuing/Taking/Killing/Possessing Or Disposing Of Wildlife Illegally. Case filed on June 30, 2015. Case disposed on July 17, 2015. Fine Amount: \$49.50.

William Dean Wade, Cedar Hill, TX - Exceeded Posted Speed Limit (Exceeded By 16-19 Mph). Case filed on July 3, 2015. Case disposed on July 19, 2015. Fine Amount: \$80.50.

Danielle K. Weskamp, Lincoln, NE - Exceeded Posted Speed Limit (Exceeded By 16-19 Mph). Case filed on July 10, 2015. Case disposed on July 20, 2015. Fine Amount: \$80.50.

**NorthwestCell**

1218 South Main Maryville, MO 64468
660.582.3334 | 800.331.6341 | www.nwmccl.com

Lifeline Program NorthwestCell Customers in Missouri

Lifeline is a government program that offers qualified individuals a discount on their monthly local telephone bill. Each state has its own guidelines to qualify. Lifeline is available on one telephone service per household, whether wireline or wireless.

How much can I save on my phone bill?
NorthwestCell offers two Lifeline Plan options, a \$17.95 plan and \$21.95 plan. You will save up to \$9.25 on either of these selected plans.

How do I know if I'm eligible?
You're eligible for Lifeline if you participate in any of the following programs:

1. MO Health Net (Medicaid)
2. Supplemental Nutrition Assistance (Food Stamps)
3. Supplemental Security Income (SSI)
4. Low-Income Home Energy Assistance (LIHEAP)
5. Federal Public Housing Assistance (Section 8)
6. Temporary Assistance for Needy Families (TANF)
7. National School Lunch Free Lunch Program
8. 135% of the Federal Poverty Level

Are there any restrictions?
Lifeline can only be used for one telephone per household—either wireless or wireline.

How do I apply?
Applications are available at social services offices, NorthwestCell's main office, all agent locations or online at www.nwmccl.com. You may also contact us at (800) 331-6341.

Other Information:
Discounts are available on select handsets. Please see retail office for more information.

How do I continue to receive Lifeline benefits?
Eligibility is reviewed periodically. Your benefits will be discontinued when you no longer meet the eligibility requirements or when proof of eligibility is not received. You are responsible for contacting NorthwestCell if you are no longer eligible for Lifeline Service.

Being a Lifeline customer does not protect you from being disconnected if you fail to pay your telephone bill. Normal collection practices apply.



Sheriff's Office Weekly Report

HOLT COUNTY SHERIFF'S OFFICE
PO Box 229 • Oregon, Missouri 64473 • 660-446-3300

The Holt County Sheriff's Office in Oregon, MO, submitted the following civil and criminal responses from July 20-26, 2015. These include:

July 20, 2015

07:45 - **Suspicious Vehicle:** A deputy responded to a report of a suspicious vehicle in Oregon.

11:10 - **Careless & Imprudent (C & I) Driver:** Dispatch received a report of a C & I driver on I-29 at the 65 mile marker. Troop H was also notified.

16:29 - **Trespassing:** A deputy responded to a report of trespassing in the Forest City area, but was unable to locate the suspect.

18:06 - **Domestic Disturbance/Violence:** A deputy responded to a report of a domestic disturbance in the Maitland area. The deputy cleared the scene.

July 21, 2015

08:14 - **Accident:** Dispatch received a report of a wrecked vehicle on Keystone Drive and Holt 110 in Forest City. Troop H was also notified.

08:35 - **C & I Driving:** Dispatch received a report of a C & I driver on I-29 in the Mound City area. Troop H was also notified.

10:15 - **Prisoner Release:** A male prisoner was released on bond.

11:24 - **Prisoner Transport:** A male prisoner was transported to and from the Andrew County Jail for a court appearance.

15:11 - **Motorist Assist:** A deputy assisted a stopped vehicle on the 75 mile marker exit ramp on I-29.

21:25 - **Trespassing:** A deputy responded to a report of trespassing in the Maitland area. The deputy cleared the scene.

July 22, 2015

06:31 - **Accident-Non-Injury:** Dispatch received a report of a non-injury accident on I-29 in the Craig area. Troop H was also notified.

07:30 - **Property Damage:** A deputy took a report of property damage at a Mound City residence.

07:35 - **Property Damage:** A deputy took a report of property damage in the Maitland area.

08:07 - **Property Damage:** A deputy took a report of property damage at a Skidmore residence.

14:23 - **C & I Driving:** Dispatch received a report of a C & I driver on I-29 at the 71 mile marker. Troop H was also notified.

14:33 - **Prisoner Transport-Medical:** A male prisoner was transported to a medical appointment.

15:28 - **Disturbance-Other:** A deputy responded to a report of a disturbance in Maitland, but was unable to make contact with the subject.

15:39 - **Possible Intoxicated Driver:** A deputy responded to a report of a possible intoxicated driver on I-29 at the 80 mile marker. The driver

was stopped by Troop H and was not intoxicated.

20:32 - **Emergency Medical Services (EMS) Call:** A deputy assisted first responders at a 4-wheeler accident. One subject was taken to the hospital.

23:50 - **Assist Outside Agency:** A deputy assisted Richardson County at the Rulo bridge with a subject threatening to jump off the bridge. The person was recovered unharmed.

July 23, 2015

08:40 - **Prisoner Transport:** A male prisoner was transported from Andrew County to the Holt County Sheriff's Office (HCSO).

10:50 - **Trespassing:** A deputy took a report of trespassing at an Oregon residence.

13:14 - **Motorist Assist:** A deputy assisted a motorist that ran out of gas on Hwy. 111 between Oregon and Forest City.

17:30 - **Accident-Injury:** Deputies assisted first responders at an accident on Hwy. 59 in the Oregon area. One subject was transported to the hospital.

20:32 - **Disturbance-Other:** A deputy took a report on a disturbance at a residence in Craig.

July 24, 2015

10:00 - **Sex Offender Registration:** A male subject came into HCSO to update his sex offender registration.

13:01 - **Roadway Obstruction:** A motorist called to report debris in the roadway on I-29 at the 72 mile marker. Troop H was also notified.

21:24 - **Motorist Assist:** A deputy assisted a motorist who had run out of gas on I-29 at the 75.8 mile marker.

July 25, 2015

00:21 - **Motorist Assist:** A deputy assisted a motorist with a flat tire on Hwy. 159 in the Forest City area.

10:46 - **C & I Driver:** Dispatch received a report of a C & I driver on I-29 in the Mound City area. Troop H was also notified.

13:55 - **Disturbance:** A deputy responded to a report of a disturbance in the Craig area.

17:56 - **Stealing-Past:** A deputy took a report on a theft from an Oregon residence.

18:23 - **Prisoner Book-In:** A female subject was booked into jail for a 3-day commitment.

July 26, 2015

02:54 - **Disturbance-Other:** A deputy responded to a disturbance at an Oregon residence. The deputy cleared the scene.

12:12 - **Animal Bite:** A deputy took a report of a dog bite of a resident in Craig.

12:15 - **Civil Stand-by:** A deputy assisted with a civil stand-by at a Maitland residence.

15:52 - **Child Custody:** A deputy took a report on a child custody disagreement at a Craig residence.

**2011 MERCURY MILAN**

95K MILES

\$11,100

HULLMANS FORD
402-245-4413
WWW.HULLMANSFORD.COM
FALLS CITY, NE

**2012 FORD FUSION**

98K MILES

\$12,500

Youngsters learn from the “Master of Swim Lessons”



Jill Asher, above right - Has taught swimming lessons at Mound City for nearly 40 years to children from the first steps into the water through lifeguard qualification. Many years ago, Jill coached a competitive swim team at Mound City and has managed the Mound City Public Swimming Pool for 17 years. This year, Jill instructed approximately 125 young swimmers. From teaching them how to blow bubbles, put their face in the water and float on their back to perfecting swim strokes, dives into the water and jumps off the board, Jill can be proud of the hundreds of swimmers that enjoy the water because of her. Destiny Panning, above left, swims through the hula hoop, Jill's favorite trick to get young swimmers' faces into the water.



A young class of swimmers - Play the “Escape the Hula Hoop” game during lessons with Jill Asher. Jill has taught hundreds of children how to swim over the past years and many of her former students now bring their children to the Mound City Swimming Pool for lessons with the veteran instructor. Getting ready to go under water, blow bubbles and “escape” are the class of Danica McDonald, Max Knowles, Naomi Lassen, Selah Meadows and Destiny Panning.



Swimmers practice floating on their backs - During swimming lessons with Jill Asher at the Mound City Swimming Pool. Hundreds of children, many now adults, have trusted Jill to not let go until they were ready. Jill just smiles when she sees families come to the pool to swim, knowing that her years of instruction many times included the parents when they were young.



Flash the Kitten earns a new name

An eight-week old kitten named Flash hitched a ride from the Hugh and Cindy Wallace farm north of Mound City to the Kansas City International (KCI) Airport on Thursday, July 23, under the hood of Kelli Wallace's car. He made it all the way to the Parking Spot garage at the airport over one hour away. When Kelli was getting out of her car, she heard a meowing sound. She popped open the hood and there was Flash, looking at Kelli with a “what do we do now” look on his face.

Kelli had a plane to catch and called home to her mom, Cindy, for advice on how to deal with this little passenger. Luckily for the Wallace family and Flash, the Parking Spot manager is an animal lover, and she found a box to keep Flash in until he could be picked up.

Hugh drove down to KCI to get him. He laughed when recalling the trip home. Undoubtedly, Flash had learned that sitting very still while the vehicle is in motion is the best way to travel because Hugh had to check the box twice to see if the kitten was still alive.

Upon arrival back at the farm, Flash jumped out of the truck and raced back to the woodpile that he and his siblings call home.

The traveling kitten has a new name now at the Wallace house. It was decided that Lucky is a more appropriate name. It is hoped that Lucky has learned the best mode of traveling for him is on all four feet.

Preparing for fall wheat sowing

This past winter wheat yields across the area have been lower than expected because of Fusarium head blight (head scab) and stripe rust. Now is the time to prepare for fall planting by taking several actions.

First, wheat seed should be thoroughly cleaned to remove severely diseased kernels. Germination can be low from Fusarium damaged kernels. Add a fungicide seed treatment to improve the germination rate and reduce the risk of seedling diseases caused by Fusarium during stand establishment.

Varieties should be selected for resistance to scab. Scab affects wheat when rain occurs during flowing. This disease is best controlled through resistance rather than trying to time a fungicide application.

The complete disease package of the wheat variety should be considered. In general, hard red winter wheats are suited for drier areas of Kansas and Nebraska. Soft red winter wheats have better disease packages for varieties suited for Missouri.

The University of Missouri Variety Testing Program has published wheat variety trials across north Missouri. This information can be found by <http://varietytesting.missouri.edu/>. Check results and look for those that yield well across different sites and if data is available, more than one year.

For more information, contact Wayne Flanary at 660-446-3724; or Heather Benedict at 660-425-6434, Regional Agronomists, University of Missouri Extension.

Atchison County Fair truck and tractor pull coming up

The Atchison County Fair is hosting its annual truck and tractor pull on Saturday, August 1, at the Atchison County Fairgrounds in Rock Port, MO. The event begins at 6:30 p.m.

The pull is sanctioned by the Northwest Missouri Tractor Pullers' Association (NWMTPA). Classes of competitors include 6500 Non Turbo, 8500 Pro Farm, 6500 Combo Class, 8500 A Pump, Unlimited Open, 9000 P Pump and 2.5 Diesel Pickups. The Tri-County Sweepstakes has added \$5,000 to include the 8500 Limited Pro and 6200 Pro Stock 4x4 classes. The sled will be “Ol’ Busch”.

Admission is \$10, with ages 10 and under free.

Williams’ Aerial Spraying



Call Tom's cell phone at 660-572-0265 for more information.

FLOOD

The Wood Care Specialist

Penetrating Wood Finish for Fences, Decks & Siding

- Penetrates to protect against water and sun damage and preserve wood's natural beauty
- Easy soap and water cleanup



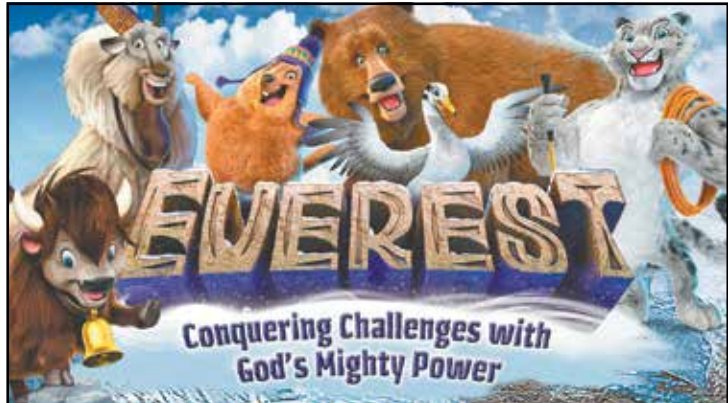
SALE \$19.99

Reg. \$24.99

While Supplies Last!

MOUND CITY LUMBER

Monday-Friday: 7:30 a.m.-5:00 p.m.
Saturday: 7:30 a.m.-4:00 p.m.
108 W. 7th St. • Mound City, MO
660-442-5416



SUPER SATURDAY

Ages 4-12

VBS

Ages 4-12

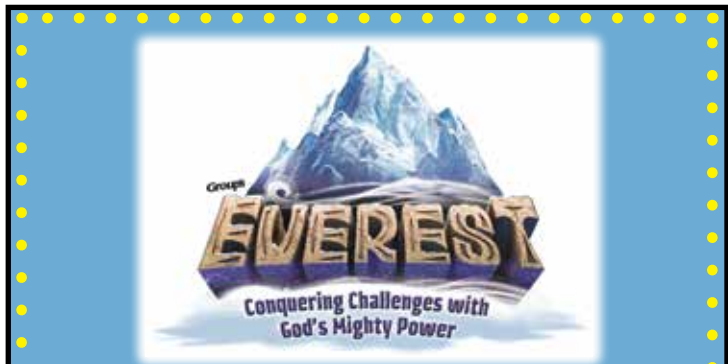
Saturday, August 1 • 10 a.m.-4 p.m.

New Life Apostolic

307 E. 6th St., Mound City

Songs, dramas, lessons, puppets, crafts, games, food and much more!

For transportation, contact Scott Jordan - 660-383-6095
For more information, contact Rachel Henson - 660-572-0712



CHILDREN'S REVIVAL

Sunday, August 2

at 11:00 a.m.

New Life Apostolic

307 E. 6th St., Mound City

Guest Speaker:

Britten LeMoine, Lebanon, MO

For transportation, contact Scott Jordan - 660-383-6095
For more information, contact Rachel Henson - 660-572-0712

You'll be surprised by what your used fridge is worth.



KCP&L Home Energy Rebates



Do you have a second fridge or freezer you want to get rid of? Give us a call. We'll pick it up and pay you \$75. It's just one of eight efficiency programs we offer to help you save money and energy.

kcpl.com/save

855-KCPL-123 | Available to Missouri customers





2015 Trojanettes 11 and under softball team

The Trojanettes 11 and under (11U) softball team - Finished the 2015 season with a record of 15-17. The top three finishes for the team were Amateur Softball Association (ASA) May Madness on May 2-3, finishing in fifth place (3-3); United States Specialty Sports Association (USSSA) World Series Tune-Up on July 11-12, finishing in fifth place (2-2); and USSSA National Championship World Series on July 16-18, finishing in seventh place (4-2). Members of Trojanettes 11U are, front row, left to right, Kendall Hux (Mound City), Aubrey Watkins (Rock Port, MO), Rayleigh Guyer (Oregon, MO), Maya Watkins (Gower, MO), Jillian Hurt (Eagleville, MO) and Taijha Lyle (Savannah, MO); middle row, Jaycee Lundy (Wathena, KS), Brooklyn May (Plattsburg, MO), Bryn Arevalo (St. Joseph, MO), Gracie Kelsey (Gower) and Sydnee Deen (Conception Junction, MO); and back row, Coaches Shane Hux, Shelly Deen, Dustin Lyle and Jim DeFreece.

2015 Trojanettes 12 and under softball team



The Trojanettes 12 and under (12U) softball team - Finished the 2015 season with a record of 41-16-1. The top four finishes for the team were first place in the Strike Out Hunger Tournament; first place in the World Series Warmup; third place in the Midwest B Goliath Tournament; and third place in the State Warmup Tournament. Members of Trojanettes 12U are, front row, left to right, Riley McQueen (Stanberry, MO), Brady Hunt (Grant City, MO), Emma Bohannon (Graham, MO), Sadie Smith (Maysville, MO) and Kiah Huitt (Lathrop, MO); and back row, Coach David Carroll (Maitland, MO), Torri Blythe (Maysville), Baylee Knorr (DeKalb, MO), Emily Cassavaugh (Maryville, MO), Brooklyn Miller (Wathena, KS), Shaina Culp (Maitland), Maddyx Kirkland (Lathrop), Coach Brian Huitt (Lathrop) and Coach Jeremy McQueen (Stanberry).

Trojanettes 11 and Under finish in the Elite 8 at the National Championship

The Trojanettes 11U traveling softball team placed seventh in the United States Specialty Sports Association (USSSA) National Championship tournament on July 16-18 at Tiffany Hills Sports Complex in Kansas City, MO. The Trojanettes won four games and lost two during the three day tournament.

On Thursday, July 16, the Trojanettes beat the Chariton Crushers, 8-6, in the first pool game. The Crushers jumped out to an early 3-0 lead in the top of the first. Rayleigh Guyer walked to lead off the bottom of the first for the Trojanettes. Kendall Hux singled and scored Guyer. Taijha Lyle had a run batted in (RBI) when she smashed a double into left field. Bryn Arevalo followed with a line drive double over second base, scoring another run. Gracie Kelsey walked and Jaycee Lundy singled to score Arevalo. Aubrey Watkins reached first on a sacrifice bunt.

Jillian Hurt grounded to third and scored Kelsey. The Trojanettes held the Crushers in the top of the second to maintain a 5-3 lead. Brooklyn May singled to lead off the bottom of the second for the Trojanettes. Maya Watkins reached first on a bunt and moved May to third. Guyer put the ball in play allowing May and Watkins to score. Kelsey batted in another run to give the Trojanettes an 8-3 lead. The Crushers scored three more in the third, but the Trojanettes held on for the victory. Hux pitched a complete game, allowed three hits and struck out five.

The Trojanettes completed pool play with a 10-3 victory over Kansas Sting. Aubrey Watkins pitched a complete game, allowed three hits and struck out two. Brooklyn May led the Trojanette offense with three RBI's. Rayleigh Guyer batted in two runs with a double up the middle to help secure the victory.

The Trojanettes started the double elimination bracket on Friday, July 17, with a 7-3 victory against Blaze. Kendall Hux pitched a complete game, allowed two hits and struck out five. The Trojanette offense was led by Jaycee Lundy and Bryn Arevalo who had two hits each. Taijha Lyle, Gracie Kelsey and Maya Watkins added base hits. Arevalo had three RBI's and Gracie Kelsey batted in two. Lyle gunned out two Blaze base runners from behind the plate to help keep the Trojanettes ahead.

Team Tulsa handed the Trojanettes their first loss in the second game. Tulsa jumped out to a 5-1 lead after the first and the Trojanettes could not battle back. Kendall Hux pitched the complete game, allowed seven hits and struck out four. The Trojanettes made contact with the hard heat from Tulsa's ace pitcher, but could not find a hole in their solid defense.

On Saturday, July 18, the Trojanettes battled against the Topeka Blaze. The Trojanettes gave up one run in the top of the first, but came back and scored three. Taijha Lyle and Rayleigh Guyer led the Trojanette offense with two hits each. Jaycee Lundy, Brooklyn May, Jillian Hurt and Gracie Kelsey

contributed offensively with base hits. Jillian Hurt made a huge double play at shortstop in the top of the third. Hurt caught a hard hit line drive and threw out a base runner to end the inning. Kendall Hux pitched three and a third innings, allowed three hits and struck out three. Topeka scored three in the top of the fourth and came within one. Aubrey Watkins came in to relieve Hux. Topeka attempted to steal home on a wild pitch, but Lyle was able to tag the runner out at home to keep the Trojanettes ahead by one. The last play of the game was much the same. Topeka attempted to steal home on a wild pitch. Lyle slid to the ground, grabbed the ball and tossed it to Watkins at home plate. Watkins blocked the plate and was able to apply the tag for the final out. The Trojanettes held on for a 5-4 victory to secure their place in the Elite 8.

River Valley Rampage, Paris, AR, defeated the Trojanettes 3-1. Aubrey Watkins pitched a complete game, allowed four hits and struck out six. The Trojanettes had five hits, but could not come through with runners in scoring position to puts runs on the board. The Trojanettes ended their 2015 season with a record of 15-17.

First Lego League sign-up deadline is August 1

Students interested in participating in the First Lego League in Mound City must sign up by Saturday, August 1. This is the second year for the league in Mound City. There are two age divisions: Junior Lego League, kindergarten through third grade; and Fist Lego League, fourth through eighth grade.

Contact Joy Wheeler at 660-572-0415 or email at jwheeler@mwdata.net.

2015 S.H.N.H. Meet the Athletes

The Nodaway-Holt Trojans, South Holt Knights and S.H.N.H. Spartans Fall sports' rosters and coaches/sponsors will be introduced at the 2015 S.H.N.H. Meet the Athletes event on Tuesday, August 18, at 6 p.m. at the Nodaway-Holt football field in Graham, MO. A meal of hot dogs, chips, baked beans and drink will be provided.

The event is sponsored by the Graham United Methodist Church, Graham Lions Club, Oregon Kiwanis, Forest City Lions Club, South Holt and Nodaway-Holt booster clubs and Nodaway-Holt and South Holt schools.

NODAWAY-HOLT TROJANS /S.H.N.H. SPARTANS	
Varsity Football	
August 14 - St. Joseph Christian Jamboree.....	6:00
August 21 - South Nodaway @ Nod.-Holt.....	7:00
August 28 - Stanberry*.....	7:00
September 4 - St. Joseph Christian @ S. Holt.....	7:00
September 11 - East Atchison*.....	7:00
September 18 - Albany* @ Nod.-Holt.....	7:00
September 25 - Worth County*.....	7:00
October 2 - Rock Port* (Homecoming) @ S. Holt.....	7:00
October 9 - Mound City*.....	7:00
October 16 - N-W Nod.* (Senior Night) @ Nod.-Holt.....	7:00
October 23 - District Play-Offs Round 1.....	7:00
JH/JV Football	
September 8 - North Andrew.....	5:00
Sept. 14 - JH vs. East Atch.; JV vs. Rock Port @ S. Holt.....	5:00
September 21 - North-West Nodaway.....	5:00
September 28 - Mound City.....	5:00
October 5 - King City @ Nod.-Holt.....	5:00
October 12 - St. Joseph Christian @ S. Holt.....	5:00
JH/JV/Varsity Volleyball	
August 24 - Mound City (JV/V).....	5:30
August 27 & 29 - Fairfax Tourn. (V).....	4:00/9:00
September 1 - West Nodaway (JV/V).....	5:30
September 3 - Rock Port* (JV/V).....	5:30
September 5 - Tarkio Tourn. (V).....	8:00
September 8 - South Holt (JH/JV/V).....	5:30
September 10 - Tarkio* (JH/JV/V).....	5:30
September 12 - West Nodaway Tourn. (JH).....	9:00
September 14 - West Nod./St. Greg. Tri-Meet (JH).....	4:30
September 15 - West Platte (JV/V).....	5:00
September 17 - Mound City* (JH/JV/V).....	5:30
September 19 - Nod.-Holt Tourn. (V).....	8:00
September 21 - Tarkio (JV/V).....	5:30
September 24 - Fairfax* (JV/V).....	5:30
September 29 - St. Joseph Christian (JH/JV/V).....	5:30
October 5 - Mid-Buchanan (JV/V).....	5:30
October 7 - Plattsburg (JV/V).....	5:00
October 8 - West Nod.* (JV/V) (Senior Night).....	5:30
October 12 - Fairfax (JV/V).....	5:30
October 15 - South Holt* (JV/V).....	5:30
October 19-22 - District Tourn. @ S. Holt (V).....	TBD
*Denotes 275 Conference game Bold indicates home games	

SOUTH HOLT KNIGHTS/ S.H.N.H. SPARTANS	
Varsity Football	
August 14 - St. Joseph Christian Jamboree.....	6:00
August 21 - South Nodaway @ Nod.-Holt.....	7:00
August 28 - Stanberry*.....	7:00
September 4 - St. Joseph Christian @ S. Holt.....	7:00
September 11 - East Atchison*.....	7:00
September 18 - Albany* @ Nod.-Holt.....	7:00
September 25 - Worth County*.....	7:00
October 2 - Rock Port* (Homecoming) @ S. Holt.....	7:00
October 9 - Mound City*.....	7:00
October 16 - N-W Nod.* (Senior Night) @ Nod.-Holt.....	7:00
October 23 - District Play-Offs Round 1.....	7:00
JH/JV Football	
September 8 - North Andrew.....	5:00
Sept. 14 - JH vs. East Atch.; JV vs. Rock Port @ S. Holt.....	5:00
September 21 - North-West Nodaway.....	5:00
September 28 - Mound City.....	5:00
October 5 - King City @ Nod.-Holt.....	5:00
October 12 - St. Joseph Christian @ S. Holt.....	5:00
JH/JV/Varsity Volleyball	
August 25 - North Platte (JV/V).....	5:00
August 27 - West Nodaway (JV/V).....	5:30
September 1 - St. Joseph Christian (JV/V).....	5:30
September 3 - Mound City (JV/V).....	5:30
September 8 - Nodaway-Holt (JH/JV/V).....	5:30
September 10 - Fairfax (JV/V).....	5:30
September 12 - Lathrop Tourn. (V).....	TBD
September 14 - Mound City/N. Platte (V).....	5:30
September 15 - Plattsburg (JV/V).....	6:30
September 17 - Rock Port (JH/JV/V).....	5:30
September 19 - Nod.-Holt Tourn. (V).....	8:00
September 22 - Savannah (JH).....	4:00
September 24 - Tarkio (JH/JV/V).....	5:30
September 26 - Lathrop Tourn. (JV).....	TBD
September 29 - Mid-Buchanan (JH/JV/V).....	5:30
October 1 - West Nodaway (JH/JV/V).....	5:30
October 5 - St. Gregory (Maryville) (JH).....	5:00
October 6 - Mound City (JH).....	5:30
October 10 - Plattsburg Tourn. (JH).....	TBD
October 10 - E. Buchanan Tourn. (JV).....	TBD
October 12 - Tarkio (JV/V).....	5:30
October 13 - Fairfax (JV/V).....	5:30
October 15 - Nod.-Holt (JV/V).....	5:30
October 19 - District Tourn. (V).....	TBD
October 24 - Sectional and Quarterfinals (V).....	TBD
October 30-31 - State Tourn. (V).....	TBD
*Denotes 275 Conference game Bold indicates home games	

CRAIG
COMMUNITY
CALENDAR

(ITEMS MUST BE AT THE MOUND CITY NEWS BY NOON MONDAY)

August 1 - Atchison County Fair Truck & Tractor Pull at the Fairgrounds in Rock Port - 6:30 p.m.

August 4 - Election Day

August 8-9 - Kent and Livengood Memorial Fishing Derby at Thurnau Conservation Area - 7 a.m.

August 19 - School Begins at Craig R-3

August 19 - Craig City Council at Craig City Hall - 5:30 p.m.

August 29 - Northwest Muddy MO Catfish Tournament at Thurnau Landing near Craig

See Us For All Your Banking Needs

• FREE Checking • FREE Internet Banking

• NOW Accounts • Savings Accounts • CDs

• LOANS At Competitive Rates for Homes, Cars, Etc.

Citizens Bank & Trust

PO Box 70
Rock Port, MO 64482
660-744-5333

PO Box 38
Craig, MO 64437
660-683-5333

904 State St.
Mound City, MO 64470

660-442-3800

Member FDIC

FEDERAL RESERVE BANK



The Mound City R-2 FFA chapter officers - Recently attended a team building event, Breakout KC, in Kansas City, MO. The officers are, front row, left to right, Kaitie Smith and Malori Davis; and, back row, Kendey Eaton, Hunter Holstine, Joeigh Eaton, Emily Wedlock, Maggie Caton and Montana Kunkel.

Mound City R-2 FFA officers attend team building event

The Mound City R-2 FFA chapter officers went to a team building exercise in Kansas City, MO, called Breakout KC, on Tuesday, July 14. At Breakout KC, each team was locked in a room. The group had to work together to solve puzzles to get out with only one hour to

accomplish the task. As part of this exercise the officers learned how to communicate and work together as a team. The Mound City R-2 officers just needed “a couple more minutes” and they would have escaped before time ran out. The event has a 32% pass rate. The 2015-2016

officers from Mound City are President Montana Kunkel, 1st Vice-President Hunter Holstine, 2nd Vice-President Emily Wedlock, Secretary Kendey Eaton, Treasurer Joeigh Eaton, 1st Reporter Maggie Caton, 2nd Reporter Kaitie Smith and Sentinel Malori Davis.

South Holt R-I Elementary school supply list

Preschool

- 2 boxes of 8 crayons (regular size), basic colors
- 3 wet wipes refills
- 2 rolls of paper towels
- 2 folders with pockets
- 1 bottle Elmer’s glue
- Girls: 1 box sandwich size Ziploc bags
- Girls: 1 package blank index cards
- Boys: 1 box Kleenex (lotion free)
- Boys: 1 package paper plates
- regular size backpack
- beach towel
- family picture
- clean change of clothes in Ziploc bag

Kindergarten

Please **DO NOT** write child’s name on supplies unless specified.

- 2 boxes of crayons (24 pack Crayola)
- 20 plain wooden pencils
- safety scissors with rounded tips
- 8 ounce bottle of Elmer’s glue (washable)
- 4 glue sticks
- 1 pink eraser
- plastic shoe box (snap on lid) with child’s name
- 3 sturdy pocket folders
- school bag with child’s name
- paint shirt (large old shirt) with child’s name
- gym shoes (Velcro preferred) with child’s name
- washable markers (8 basic colors)
- Girls: 1 box of sandwich size Ziploc bags
- Girls: 1 tub of Clorox wipes
- Boys: 1 box of gallon size Ziploc bags
- Boys: 1 container baby wipes
- 1 package of index cards
- 2 boxes of Kleenex (regular size)
- 1 roll of paper towels
- 2 dry erase markers (Expo)
- 1 package of card stock

First grade

Please **DO NOT** write child’s name on supplies unless specified.

- 24 No. 2 pencils
- crayons (24 in a box)
- colored pencils
- Fiskars scissors with child’s name
- glue (white)
- 4 glue sticks
- 4 large erasers
- 1 package of note cards
- 2 folders with pockets
- 2 black Expo markers
- 1 package white card stock
- 2 boxes of Kleenex (regular size)
- school box with child’s name
- school bag with child’s name

- gym shoes with child’s name
- clorox wipes
- Girls: 1 box of gallon size Ziploc bags
- Boys: 1 box of sandwich size Ziploc bags

Second grade

- No. 2 pencils
- 1 large eraser
- 24 crayons
- markers (classic colors)
- 2 ink pens
- 1 highlighter
- 1 bottle glue
- 4 glue sticks
- watercolor paints and paint shirt
- 6 black dry erase markers
- child size scissors (pointed end)
- 4 solid color folders with pockets and fasteners
- 2 solid color spiral notebooks (wide rule)
- 1 composition notebook (wide rule)
- 1 package wide ruled notebook paper
- 2 packages unlined index cards
- supply box
- backpack
- gym shoes
- 1 pair of socks
- 2 boxes tissue
- 1 roll paper towels
- 1 container Clorox wipes
- 1 container baby wipes
- Girls: 1 box quart size Ziploc bags
- Boys: 1 box gallon size Ziploc bags

Third grade

- No. 2 pencils
- eraser
- crayons
- scissors
- 2 red pens
- 2 highlighters
- 2 glue sticks
- 2 spiral notebooks (wide lined)
- 2 packages wide lined paper
- 4 folders with fasteners and pockets
- 6 dry erase markers
- 1 box of Kleenex (regular size)
- Clorox wipes
- snap shut school box
- gym shoes
- school bag or satchel
- **NO TRAPPER KEEPERS**

Fourth grade

- No. 2 pencils
- small box of crayons
- small box of markers
- 5 dry erase markers
- 5 folders with fasteners and pockets
- scissors (pointed)
- 2 packages of glue sticks
- 2 highlighters
- 1 package 3 x 5 notecards
- erasers
- pencil box/pouch

- 1 binder (1 inch)
- 6 composition books
- 1 spiral notebook (wide lined)
- 2 reams notebook paper (wide lined)
- 2 packages of 3-square Post-It notes
- 1 box of Kleenex (regular size)
- gym shoes
- 1 ballpoint pen (blue or black)
- 1 ballpoint pen (red)

Fifth grade

- No. 2 pencils
- small box of crayons
- scissors (pointed)
- glue sticks
- small box of markers
- red pens
- 2 highlighters (yellow only)
- 2 dry erase markers (black only)
- 3-ring binder (1”-1.5”)
- 1 package of dividers for binder
- 2 packages of notebook paper (college rule)
- 1 spiral notebook (college rule)
- art box (small), snap shut
- Clorox wipes
- 1 box of Kleenex (regular size)
- gym shoes
- Trapper Keeper
- 5 folders for Trapper Keeper
- display board (need after Christmas)
- 2 small index card boxes
- 1 package of index cards
- 1 package of 3-square Post-It notes

Sixth grade

- No. 2 pencils
- crayons
- colored pencils
- scissors
- glue
- 3-ring binder (1”-1.5”)
- 1 package of dividers for binder
- calculator (simple)
- 3 red ballpoint pens
- ruler (with in., cm and mm)
- 3 folders with fasteners and pockets
- 2 spiral notebooks (college rule)
- 2 packages loose leaf paper (college rule)
- 1 composition notebook
- 1 package of 3-square Post-It notes
- Trapper Keeper
- 5 folders for Trapper Keeper
- pencil pouch
- 4 dry erase markers
- highlighter
- markers (8 classic colors)
- 2 boxes of Kleenex (regular size)
- Clorox wipes
- gym shoes

Upper elementary: Please label all items with child’s name.

Area youth receives Eagle Award

Caleb Prettyman of Barnard, MO, earned the rank of Eagle Scout on Friday, July 10, 2015, upon the successful completion of his Eagle project and passing the Board of Review. Caleb is a member of Troop 75 in Maryville, MO. He has earned 57 total merit badges during his scouting career and is a Tom-Tom Beater in the Tribe of Mic-o-Say.

Eagle is the highest and most coveted award in all scouting, and it is the last major step in the advancement program for a Boy Scout. It is at this point in which scouting has achieved its purpose in the building of character, in the training for leadership and in the practice of service. The final obligation of an Eagle Scout is service - not only helping those who follow him up the scouting trail, but also in service and leadership in his community as well.

Before a young man becomes an Eagle Scout he must plan, develop and give leadership to others in a service project for a religious institution, school or community. Caleb’s Eagle project was preparing and repainting all the fire hydrants in the Barnard community and installing locator antennas with flags so they may be easily located in an emergency situation should the need arise. As many of the hydrants are in obscure areas, bright paint and locator flags were a much-needed addition. Caleb demonstrated leadership by planning the work and organizing the personnel needed. He met with local community groups to obtain the financing and then directed the project to completion.

Caleb is the son of Chris and Jennifer Prettyman and is a junior at South Nodaway High School in Barnard. He is the



grandson of Clenell and Laura Jo Prettyman of Barnard, and Robert and the late Marilyn Hardin of Albany, MO.

A Court of Honor is scheduled for Saturday, August 29, 2015, at 4 p.m., at the Christian Church in Barnard to honor Caleb’s achievement.

Atchison-Holt Electric Cooperative holds successful annual meeting

(TOP RIGHT) The 77th Annual Meeting - Of the Atchison-Holt Electric Cooperative was held at the Rock Port, MO, City Park on Thursday, July 23. A meal was served and passes were available to swim in the Rock Port pool. Visual Faith, a country gospel singing group, was the evening’s entertainment, followed by the business meeting. Three directors were elected with incumbents seeking re-election. At the end of the meeting, drawings were held. Pictured right, Director Larry Lauman, left, of Coin, IA, presents Jim Holtz, right, of Fairfax, MO, with the grand prize of a \$500 credit on Holtz’s electric bill.



(BOTTOM RIGHT) Louanne Heits, left, of Fairfax, MO - Serves Bernie Heits, right, of Rock Port, MO, at the Atchison-Holt Electric Cooperative 77th Annual Meeting in Rock Port on Thursday, July 23. Louanne’s husband, Craig Heits, is a director for the cooperative.



DON’T GIVE YOUR HARD EARNED MONEY TO THE COUNTY COMMISSIONERS THEY’LL JUST WASTE IT!

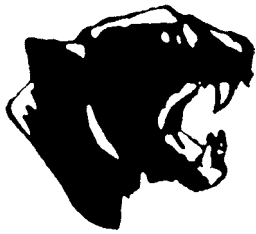
VOTE NO ON THE SALES TAX INCREASE

COUNTY OF HOLT

QUESTION

Shall the County of Holt impose a countywide sales tax at the rate of one-half of one percent (1/2 of 1%) for a period of ten years from the date on which said tax is first imposed for the General Purpose Sales Tax for General Revenue of Holt County? 67.546 RSMo.

- ☐ YES
- ☒ NO



Mound City Panthers hold football camp

(ABOVE) Head Coach Brian Messer (shown in backfield) - Runs the Mound City Panthers through plays during the team's football camp from July 16-22 at Ceglenski field in Mound City. Messer reports that 19 players from Mound City R-2 and Craig R-3 attended the camp. Assistant coaches are Jason Tenney of Mound City R-2 and Troy Kull of Craig R-3. Jaden Gillenwater (#7) is slated for quarterback duties for the Panthers.

(MIDDLE, INSET) Members of the Mound City Panthers' football team - Go head-to-head during a scrimmaging drill at the team's football camp on Tuesday, July 21. The camp was held July 16-22 at Ceglenski Field in Mound City. Nineteen Panther players from Mound City R-2 and Craig R-3 received instruction from Head Coach Brian Messer and Assistant Coaches Jason Tenney and Troy Kull. This is Kull's first year with the team and he is the new history teacher at Craig R-3.



(BOTTOM RIGHT, INSET) Troy Kull, St. Joseph, MO, left - Gives defensive instructions to Wyatt Kerns, a freshman on the Mound City Panthers' football team, during team camp on Tuesday, July 21. The camp was held July 16-22. Kull, a first-year history teacher at Craig R-3, is one of the Panthers' assistant coaches for the 2015 season.



Local young ladies attend basketball camp

Several girls from the area - Attended a three-day basketball camp at Missouri Western State University (MWSU) in St. Joseph, MO, Monday through Wednesday, July 20-22. According to MWSU Women's Basketball Associate Head Coach Roger Smith, 85 girls attended the camp where shooting, dribbling and passing fundamentals were taught with assistance from the team's varsity players. "The university and Head Coach Rod Edmisson were very pleased with the large attendance this year," stated Smith. Pictured above are, front row, left to right, Kenna Morris, of South Holt R-1, Jesse Graves of Fairfax R-3, and Elizabeth Laukemper of Mound City R-2; and back row, Cameron Laukemper and Sianna Meadows of Mound City R-2, and Jaycee Graves and Kilea Cooper of Fairfax R-3.

HI! STUDENTS AND FACULTY: Welcome back! We will be glad to see you as the Craig R-III School District OPENS WEDNESDAY, AUG. 19 for the 2015-2016 school year.

MEETINGS FOR TEACHERS AND OTHER EMPLOYEES WILL BE HELD
MONDAY, AUG. 17
TUESDAY, AUG. 18

MISSION STATEMENT

The mission of the Craig R-III School District is to offer a wide range of educational opportunities in a safe environment which will allow students to master academic skills and become life-long learners and responsible, respectful citizens.

Back-to-School Night And Open House Monday, August 17, 2015 5:30 p.m. - 7:00 p.m.

NOTICE OF NONDISCRIMINATION

Students, parents of elementary and secondary school students, employees, applicants for admission and employment, sources of referral of applicants for admission and employment with Craig R-III School District are hereby notified that this institution does not discriminate on the basis of sex or handicap in admission, access to, treatment, or employment in its programs and activities.

Any person having inquiries concerning Craig R-III School District's compliance with the regulations implementing Title IX or Section 504 is directed to contact Mike Leach, Title IX and Section 504 Coordinator, Craig, MO 64437, telephone number 660-683-5351, who has been designated to coordinate Craig R-III School District's efforts to comply with the regulations implementing Title IX and Section 504.

Any person may also contact the Assistant Secretary for Civil Rights, U.S. Department of Education, regarding Craig R-III School District's compliance with the regulations implementing Title IX or Section 504.

CRAIG R-III 2015-2016 CALENDAR

Aug. 17	Staff Orientation	Dec. 21	Christmas Break - No School
Aug. 18	Staff Orientation	Jan. 4	School Resumes, 3rd Quarter Begins
Aug. 19	School Year Opens, Full Day	Jan. 18	MLK Day - School Closed
Sept. 7	Labor Day - School Closed	Feb. 1	No School - Teacher In-Service
Sept. 21	No School - Teacher In-Service	Feb. 15	Presidents' Day - School Closed
Oct. 16	1st Quarter Ends	March 11	Third Quarter Ends
Oct. 19	Second Quarter Begins	March 14	No School - Teacher In-Service
Oct. 22	Dismissal 12:40	March 15	Fourth Quarter Begins
	Parent-Teacher Conferences	March 25-28	Easter Break - No School
Oct. 23	No School - Teacher In-Service	April 18	No School - Teacher In-Service
Nov. 16	No School - In-Service	May 6	Graduation
Nov. 25	Thanksgiving - School Closed	May 19	Dismissal 12:40 - Last Day of School
Nov. 26	Thanksgiving - School Closed		- 4th Quarter Ends
Nov. 27	Thanksgiving - School Closed		
Dec. 18	Dismissal 12:40 - First Semester Ends		

Potential make-up days: Jan. 18, Feb. 15,
March 28, May 20, 23, 24

School will be in session from 8:20 a.m. to 3:25 p.m. for a 6.65 hour day.

AHERA NOTIFICATION

The required annual federal notification is herein served to all parents, employees, and interested residents of the District that they may review and inspect the AHERA Management Plan for the District at any time during regular business hours in the superintendent's office.

Any Additional Information May Be Obtained From:

MIKE LEACH, Superintendent, or
KEN GROVE, Elementary & Secondary Principal
660-683-5351 660-683-5431



REGISTRATION

High School Registration Will Be Held On
Tuesday, August 4, From 9:30 a.m.-3:00 p.m.
7th and 8th Grade Will Register First Hour
On Wednesday, August 19. New students can register
Thursday, August 6, or any other time before school starts.
If you are unable to come in during those times
please call the school.
Any students may register the first day of school if they were
away at the time of registration.
Activity fee of \$20 is due at the time of registration.

School Immunization Law

This notice is to serve as a reminder that those children who are not properly immunized or properly exempt will not be in compliance and notified by the Division of Health that, "It is unlawful for any student to attend school unless he has been immunized under the rules and regulations of the Division of Health and shall not be admitted until the student meets the legal requirements for immunization or exemptions."

Parents of all children are urged to comply with the immunization schedule set by the Division of Health.

Faculty Members

MIKE LEACH.....	Superintendent
KEN GROVE.....	High School & Elementary Principal
RALPH BALL.....	Ag Science
STEPHANIE PARSONS.....	Business & Technology
LAURA WOOTEN.....	Title I
SAMANTHA BURTON.....	Music/Band
LANI CLAYTON.....	Counselor
DONNA VEST.....	Librarian
ASHLEY MYERS.....	Kindergarten
BRITTANY SCHLAPIA.....	First Grade
BRITTANY SCHLAPIA.....	Second Grade
BETSY MCQUEEN.....	Third Grade
BETSY MCQUEEN.....	Fourth Grade
LORYANNE DAUGHERTY.....	Fifth Grade
LORYANNE DAUGHERTY.....	Sixth Grade
KAREN ZOST.....	Special Services/Speech
CODIE SWOPE.....	Physical Education
TROY KULL.....	Social Studies
MELANIE BRANDON.....	Math
TERESA JACKSON.....	Science
HEATHER MCCOY.....	Communication Arts
KRISTINE PRICE.....	Art

Program for the First Day

Bus routes approx. the same as last year.
Contact the school prior to August 19 for additional questions.

Grades K to 6 enroll in their own rooms.

Kindergarten Is An All-Day Program

General Information

Children entering the first grade must be six years of age on or before August 1, 2015. Children entering kindergarten must be five years of age on or before August 1, 2015. All beginners must present birth certificate and a complete immunization record.

School Breakfast and Lunch will be served on Wednesday, August 19.

Bus routes approx. the same as last year.
Contact the school prior to August 19 for additional questions.

LUNCHES
\$2.00 Grades 7-12; \$1.75 K-6
40¢ Reduced; \$2.75 Adults
BREAKFAST
\$1.40 K-12 and Adults; 30¢ Reduced
Kindergarten Afternoon Milk 30¢; Extra Milk 30¢

Support Staff

MINDY VOLTMER.....	Secretary to Superintendent
DEBBIE KENT.....	Elementary and High School Secretary
CATHY ALTENA.....	Paraprofessional
DAVID FARMER.....	Maintenance/Custodial
TRACEY KEPHART.....	Custodial
KAY SMITH.....	Food Service Director
PAM HAER.....	Food Service
CINDY KLAAS.....	Health Services
CHARLES BACHLE.....	Technology Support
KATHY LEACH.....	Parents As Teachers

Board of Education Members

REBECCA MONROE.....	President
ROB LILES.....	Vice-President
MINDY VOLTMER.....	Secretary to the Board
MIKE WRIGHT.....	Treasurer
NICOLE HINRICH.....	Member
SAMANTHA GRIST.....	Member
MARK FALLER.....	Member
KEITH KNAAK.....	Member

NATIONAL SCHOOL LUNCH & BREAKFAST PROGRAM

The Craig R-3 School District announced its revised free and reduced price policy for school children unable to pay the full price of meals served in schools under the National School Lunch Program and the School Breakfast Program. Local education officials have adopted the following family-size income criteria for determining eligibility:

Household Size	Maximum Household Income Eligible for Free or Reduced Price			Maximum Household Income Eligible for Reduced Price		
	Annually	For Free Weekly	For Reduced Weekly	Annually	For Free Weekly	For Reduced Weekly
1	\$15,301	\$1,276	\$295	\$21,775	\$1,815	\$419
2	20,709	1,726	399	29,471	2,456	567
3	26,117	2,177	503	37,167	3,098	715
4	31,525	2,628	607	44,863	3,739	863
5	36,933	3,078	711	52,559	4,380	1,011
6	42,341	3,529	815	60,255	5,022	1,159
7	47,749	3,980	919	67,951	5,663	1,307
8	53,157	4,430	1,023	75,647	6,304	1,455
Each additional household member	+5,408	+451	+104	+7,696	+642	+148

Children from families whose current income is at or below those shown are eligible for free or reduced price meals. Applications are available at the school office. To apply, fill out a Free and Reduced Price School Meals Family Application and return it to the school. The information provided on the application is confidential and will be used only for the purpose of determining eligibility. Applications may be submitted any time during the school year. A complete application is required as a condition of eligibility. A complete application includes: (1) household income from all sources or Food Stamp/Temporary Assistance case number, (2) names of all household members, and (3) the signature and last four digits of social security number or indication of no social security number of adult household member signing the application. School officials may verify current income at any time during the school year. Foster children may be eligible regardless of the income of the household with whom they reside.

If a family member becomes unemployed or if family size changes, the family should contact the school to file a new application. Such changes may make the children of the family eligible for these benefits.

Households will be notified of their children's eligibility status for free or reduced price meals. If any children were not listed on the eligibility notice for families receiving SNAP, TANF or FDIPIR, the household should contact the school to have free meal benefits extended to those children.

If any child(ren) was not listed on the eligibility notice, the household should contact the LEA or school to have free meal benefits extended to that child(ren).

Under the provisions of the policy, the district bookkeeper will review the applications and determine eligibility. If a parent is dissatisfied with the ruling of the determining official, they may wish to discuss the decision with the hearing official on an informal basis or he/she may make a request either orally or in writing to the Superintendent whose address is 402 N. Ward, Craig, MO 64437. Hearing procedures are outlined in the policy. A complete copy of the policy is on file in each school and in the central office where any interested party may review it.

Non-discrimination Statement: The U.S. Department of Agriculture prohibits discrimination against its customers, employees and applicants for employment on the bases of race, color, origin, age, disability, sex, gender identity, religion, reprisal, and where applicable, political beliefs, marital status, familial or parental status, sexual orientation, or all or part of an individual's income is derived from any public assistance program, or protected genetic information in employment or in any program or activity conducted or funded by the Department. (Not all prohibited bases will apply to all programs and/or employment activities). If you wish to file a Civil Rights program complaint of discrimination, complete the USDA Program Discrimination Complaint Form (PDF), found online at http://www.ascr.usda.gov/complaint_filing_cust.html or at any USDA office, or call (866) 632-9992 to request the form. You may also write a letter containing all of the information requested in the form. Send your completed complaint form or letter to us by mail at U.S. Department of Agriculture, Director, Office of Adjudication, 1400 Independence Avenue, S.W., Washington, D.C. 20250-9410, by fax (202) 690-7442 or email at intake@usda.gov. Individuals who are deaf, hard of hearing or have speech disabilities may contact USDA through the Federal Relay Service at (800) 877-8339; or (800) 845-6136 (Spanish). USDA is an equal opportunity provider and employer.

MOUND CITY PANTHERS FALL SPORT SCHEDULE

Varsity Football

August 21 - East Atchison*	7:00
August 28 - Stewartsville*	7:00
September 4 - Worth County* (Homecoming)	7:00
September 11 - South Nodaway	7:00
September 18 - Rock Port*	7:00
September 25 - Albany*	7:00
October 2 - North-West Nod.* @ Hopkins	7:00
October 9 - S.H.N.H.*	7:00
October 16 - Stanberry* (Senior Night)	7:00
October 23 - Districts	7:00
October 30 - Districts	7:00
November 6 - Districts	7:00
November 13 - State Semi-Finals	TBD
November 27 - State Championship	TBD

JH/JV Football

September 8 - Rock Port	5:00
September 14 - Worth County	5:00
September 21 - Stanberry	5:00
September 28 - S.H.N.H.	5:00
October 5 - North-West Nodaway @W. Nod.	5:00

JH/JV/Varsity Volleyball

August 24 - Nodaway-Holt (JV/V)	5:30
August 25 & 29 - Fairfax Tourn. (V)	TBD
September 1 - Mid-Buchanan (JV/V)	5:30
September 3 - South Holt* (JV/V)	5:30
September 8 - Triangular @ W. Nod. (WN, Fairfax) (JH)	5:00

JH/JV/Varsity Volleyball (Cont.)

September 10 - Rock Port* (JH/JV/V)	5:30
September 14 - Tri. @ S. Holt (NP, SH) (V)	5:30
September 17 - Nod.-Holt* (JH/JV/V)	5:30
September 19 - Nod.-Holt Tourn. (V)	8:00
September 21 - Sacred Heart (JV/V)	6:00
September 22 - East Atchison (JH)	5:30
September 22 - Fairfax (JV/V)	6:30
September 24 - St. Joseph Christian (JH/JV/V)	5:30
September 28 - West Nodaway (JH/JV/V)	5:30
October 1 - East Atchison @ Fairfax (JH)	5:30
October 1 - Fairfax* (JV/V)	6:30
October 6 - South Holt (JH A & B)	5:30
October 8 - Tarkio* (JV/V)	5:30
October 10 - Riverside Tournament	TBD
October 12 - East Buchanan (JV/V)	5:30
October 15 - West Nodaway* (JV/V) (Senior Night)	5:30
October 19-22 - District Tourn. @ S. Holt (V)	TBD

Cross Country

September 1 - Maryville	4:00
September 15 - Tarkio	5:30
September 22 - Benton	4:00
September 29 - Rock Port	5:00
October 3 - Savannah	9:00
October 8 - Falls City	4:30
October 13 - 275 Conference Meet at Mound City	4:00
October 17 - West Platte	TBD
October 31 - Districts	TBD
November 7 - State Meet	TBD

*Denotes 275 Conference game
Bold indicates home games

Schniedermeyer awarded scholarship

Cody Schniedermeyer, Skidmore, MO, has been awarded a scholarship from the University of Missouri (MU) College of Agriculture, Food and Natural Resources for the 2015-2016 academic year. "Scholarships enable us to recruit and retain outstanding students to our college," stated Bryan Gar-ton, associate dean of academic programs. Schniedermeyer, a 2015 graduate of Nodaway-Holt

R-VII in Graham, MO, will be a freshman majoring in parks, recreation and tourism. He is the son of Steve and Sherry Schniedermeyer and was awarded the Elyzabeth Schell Scholarship. The Elyzabeth Schell Scholarship was established in 1981 by the estate of Elyzabeth Schell. The Schells were in the dairy business in the Kansas City area and had a strong interest in agriculture.

ATTENTION PARENTS & STUDENTS!

Get your back-to-school gear personalized at NW Graphix

Buy it here or bring your own items!

3-Letter Monogram - \$5

Name - \$7.50

(Back-to-School Special - No set-up fee!)



Northwest Graphix

502 State Street • Mound City, MO 64470
nwgraphix@centurylink.net

442-3804

Mound City R-2 School District

Will Open Schools on

Monday, August 17, 2015

The Mound City R-2 School District Staff and Administration
Welcome Your Support and Interest in Our School System During
the 2015-2016 School Year

MISSION STATEMENT:

Education is a key principle in the foundation of our country and the democracy in which we live. A school board has a solemn responsibility to ensure an appropriate education for the young people and children who reside in the school district. The Mound City R-2 School Board eagerly accepts this responsibility and proclaims this statement of mission: "The Mound City R-2 School Board directs and employs the district staff to accept each individual student and his own unique social and emotional, physical, and mental capabilities, to develop and nurture specific knowledge and skills in that individual enhancing their present and future life!"

Community Involvement in Decision Making

The Board of Education believes that the Mound City R-2 School District belongs to the people it was created to serve. The Board shall give substantial weight to the advice it receives from individuals and community groups interested in the school system, but shall use its own judgment in arriving at decisions. The following are two major avenues by which the will of the community may influence the Board's decisions and/or the development of Board policies, rules and regulations.

- Board members themselves will remain mindful that they are elected to represent and are directly accountable to the patrons of the district.
- Patrons of the district will be encouraged to express ideas, concerns, and judgments about the school programs in the following ways:
 - Written suggestions of proposals to the Board of Education.
 - Presentations at hearings.
 - Responses to surveys conducted under the auspices of the Board of Education.
 - Comments at meetings of the Board of Education.
 - Service on citizens' advisory councils.
 - Appropriate input into state and federal applications of the district.

Federal/State Grants

The Mound City R-2 School District participates in numerous State and Federal Programs. These programs are written to comply with all regulations as shown on the District's application documents found in the Superintendent's office. These documents are always available for review and public comment.

AHERA Notification

The required annual federal notification is herein served to all parents, employees, and interested residents of the District that they may review and inspect the AHERA Management Plan for the District at any time during regular business hours in the superintendent's office.

Note: All known friable asbestos was removed from the District's buildings by Northwest Missouri Environmental Services in August of 1991.

FOR ADDITIONAL INFORMATION CONTACT:

MRS. JAN SEITZ, Elementary / Middle School Principal, 442-5420

MR. KOREY MILES, High School / Activities Director, 442-5429

MR. KEN EATON, Superintendent, 442-3737

NOTICE OF NONDISCRIMINATION

Applicants for admission and employment, students, parents of elementary and secondary school students, employees, sources of referral of applicants for admission and employment, and all unions or professional organizations holding collective bargaining or professional agreements with Unified School District Mound City R-2 are hereby notified that this institution does not discriminate on the basis of race, color, national origin, sex, age, or handicap in admission or access to, or treatment or employment in, its programs and activities. Any person having inquiries concerning Unified School District Mound City R-2 compliance,

with the regulations implementing Title VI, Title IX, or section 504 is directed to contact Mr. Ken Eaton, Mound City, MO 64470, 660-442-3737. Mr. Ken Eaton has been designated by Unified School District Mound City R-2 to coordinate the institution's efforts to comply with the regulations implementing Title VI, Title IX, and Section 504. Any person may also contact the Assistant Secretary for Civil Rights, U.S. Department of Education, regarding the institution's compliance with the regulations implementing Title VI, Title IX, or Section 504.

of all household members, and (3) the signature and last four digits of social security number or indication of no social security number of adult household member signing the application. School officials may verify current income at any time during the school year.

Foster children may be eligible regardless of the income of the household with whom they reside.

If a family member becomes unemployed or if family size changes, the family should contact the school to file a new application. Such changes may make the children of the family eligible for these benefits.

Households will be notified of their children's eligibility status for free or reduced price meals. If any children were not listed on the eligibility notice for families receiving SNAP, TANF or FDPIR, the household should contact the school to have free meal benefits extended to those children.

If any child(ren) was not listed on the eligibility notice, the household should contact the LEA or school to have free meal benefits extended to that child(ren). Under the provisions of the policy, the district bookkeeper will review the applications and determine eligibility. If a parent is dissatisfied with the ruling of the determining official, they may wish to discuss the decision with the hearing official on an informal basis or he/she may make a request either orally or in writing to the Superintendent whose address is 708 Nebraska St., Mound City, MO 64470. Hearing procedures are outlined in the policy. A complete copy of the policy is on file in each school and in the central office where any interested party may review it.

Non-discrimination Statement: The U.S. Department of Agriculture prohibits discrimination against its customers, employees and applicants for employment on the basis of race, color, origin, age, disability, sex, gender identity, religion, marital status, and where applicable, political beliefs, marital status, familial or parental status, sexual orientation, or all or part of an individual's income is derived from any public assistance program, or protected genetic information in employment or in any program or activity conducted or funded by the Department. (Not all prohibited bases will apply to all programs and/or employment activities). If you wish to file a Civil Rights program complaint of discrimination, complete the USDA Program Discrimination Complaint Form (PDF), found online at http://www.ascr.usda.gov/complaint_filing_cust.html or at any USDA office, or call (866) 632-9992 to request the form. You may also write a letter containing all of the information requested in the form. Send your completed complaint form or letter to us by mail at U.S. Department of Agriculture, Director, Office of Adjudication, 1400 Independence Avenue, SW, Washington, D.C. 20250-9410, by fax (202) 690-7442 or email at program.intake@usda.gov. Individuals who are deaf, hard of hearing or have speech disabilities may contact USDA through the Federal Relay Service at (800) 877-8339; or (800) 845-6136 (Spanish). USDA is an equal opportunity provider and employer.

Transportation

The Mound City R-2 School District will run three bus routes this year. Four year-old preschool and kindergarten students will be transported to and from school, including four year-old preschool and kindergarten students that live less than a mile from school. All older students living within one mile cannot ride. All students four yrs. and older may be transported to and from school. Please call the Transportation Office at 442-5111 or Superintendent at 442-3737 with questions regarding pick-up points and times. The regular school day is 8:15 a.m. until 3:29 p.m. Students will be unloaded and loaded on the east side of school on Mound Street.

School Immunization Law

This notice is to serve as a reminder that those children who are not properly immunized or properly exempt will not be in compliance and notified by the Division of Health that, "It is unlawful for any student to attend school unless he has been immunized under the rules and regulations of the Division of Health and shall not be admitted until the student meets the legal requirements for immunization or exemptions."

Parents of all children are urged to comply with the immunization schedule set by the Division of Health.

Elementary Instructional Staff

MRS. JAN SEITZ	Principal
MRS. LISA CATON	Early Childhood Sp. Ed.
MRS. SARAH OSBURN	Kindergarten
MRS. LAURA FOREHAND	Grade One
MRS. KRISTA BURGE	Grade Two
MRS. RACHEL STANTON	Grade Three
MRS. LORI BUTRICK	Grade Four
MRS. CATHERINE KENNY	K-12 Art
MRS. BECKY REINIG	K-12 Vocal Music
MRS. BETH GRAVES	K-6 Counselor
MRS. KERRI BOYD	Special Services
MRS. SANDY HUGHES	Speech Pathologist
MRS. DEBRA CLIFTON	Title Reading

Middle School Staff

MRS. JAN SEITZ	Prof. Dev/Instruction
MR. KOREY MILES	Activities
MRS. CAROLYN HALL	Science
MR. RYAN OSBURN	Social Studies
MR. LEE MCFADDEN	Mathematics/At-Risk
MRS. EMILY HAMM	Language Arts

Board of Education/Central Office

MR. JEFF HOLSTINE	President
MR. BRIAN TUBBS	Vice-President
MR. JUSTIN COURTNEY	Treasurer
MR. MITCHELL CORBIN	Member
MR. CHAD DERR	Member
MR. ROBERT GIBSON	Member
MRS. KARMA METZGAR	Member
MR. KEN EATON	Superintendent
MRS. DEBORAH LOUCKS	Secretary to Superintendent and Board Secretary

LUNCH PRICES

School breakfast and lunch will be served the first day of school. Student breakfast is \$1.25 for regular and 25¢ for reduced. Student lunch is \$2.10 for regular and 40¢ for reduced. Extra milk is 25¢ per pint. Adult lunch is \$2.80 and adult breakfast is \$1.75.

Enrollment/Registration

Preschool must be three or four prior to August 1. Kindergarten students must be five years of age before August 1, 2015, and first grade students must be six years old before August 1, 2015, to enroll in school.

All new students to the district shall present a record of immunizations and a birth certificate prior to enrollment. Registration for NEW elementary and middle school students and students needing to change their schedule will be held at the Elementary Principal's office from 8 a.m. to 3 p.m. on August 6, 2015, or at your convenience Monday-Friday, August 3-7.

Registration for NEW high school students and students needing to change their schedule will be held August 6, 2015, from 9 a.m. to 1 p.m. in the High School Principal's office or at your convenience Monday-Friday, August 3-7, 8 a.m. to 3 p.m. Please wear normal school attire for registration.

Elementary / Middle School

Back-to-School Night

Thursday, Aug. 13, 5:30-6:30 p.m.

High School Instructional Staff

MR. KOREY MILES	Principal
MR. BRIAN MESSER	English
MR. DOUG FREEMYER	History
MRS. CAMMY UNGLES	Science
MR. JASON TENNEY	Mathematics
MRS. SHELLEY EATON	7-12 Counselor/Librarian
MR. DEREK PETTY	Physical Education
MR. DAVID REITER	5-12 Instrumental Music
MR. CONNOR DIGNAN	Voc. Agriculture
MRS. KARLENE HARRISON	Family & Consumer Science
MRS. KAYLA SCHOONOVER	Special Education
MRS. NICHOLE HUX	Business/Technology Director

Support Staff

MRS. JANET ATKINS	Elementary Secretary
MRS. LISA LOUCKS	High School Secretary
MRS. ANN WALKER	Preschool
MRS. JILL ASHER	Paraprofessional
MRS. MELANIE ASHFORD	Paraprofessional
MRS. SARAH MONTGOMERY	Paraprofessional
MRS. MISHAEL BARTON	Paraprofessional
MS. NANCY NAUMAN	Paraprofessional
MRS. AMY KELLY	Food Service Manager
MRS. AMY BAKER	Food Service
MRS. NENA BROWN	Food Service
MS. PEARL FITZPATRICK	Food Service
MRS. CINDY KLAAS	Student Health Services
MR. PAUL PANNING	Maintenance Director
MRS. NANNETTE PANNING	Maintenance
MR. KYLE STAPLES	Maintenance
MR. RICHARD CORBIN	Transportation Manager
MRS. GWEN KNOWLES	Parents As Teachers

2015-2016 SCHOOL CALENDAR

August 13	Teachers' In-Service
August 14	Teachers' In-Service
August 17	*School Opens. Dismissed at 12:30 p.m.
September 7	Labor Day - School Closed
September 21	No School - Teachers' In-Service
October 5	No School - Teachers' In-Service
October 15	First Quarter Ends
October 16	Second Quarter Begins
October 22	Dismissal 12:30 p.m. - Parent/Teacher Conferences
October 23	No School
November 2	Teachers' In-Service - No School
November 25-27	Thanksgiving Break - School Closed
December 18	Dismissal 12:30 p.m. - First Semester Ends
December 21	Christmas Break - No School
January 4	No School - Teachers' In-Service
January 5	School Resumes - Third Quarter Begins
January 18	Martin Luther King, Jr., Day - School Closed
February 1	No School - Teachers' In-Service
February 15	Presidents' Day - School Closed
March 9	Third Quarter Ends
March 9	March Madness - Dismissal 12:30 p.m.
March 10-11	No School - March Madness
March 14	Fourth Quarter Begins
March 24	Dismissal 12:30 p.m. - Easter Break Begins
March 25-28	Easter Break - No School
April 4	No School - Teachers' In-Service
April 18	No School - Teachers' In-Service
May 18	Fourth Quarter Ends - Last Day Of School - Dismissal 12:00 Noon
(1/18, 2/15, 3/10, 3/28, 5/19, 5/20, 5/23, 5/24, 5/25 - Possible Make-up Days)	

School will be in session from 8:15-3:29 for a 6.78 hour day.
ALL SCHOOL CANCELLATIONS WILL BE ANNOUNCED BY 6:30 A.M. (when possible) ON: KKJO (105.5), KMA (960), KFEQ (680), KNIM (97.1), KLZA (101.3), KQ-2 TV and Textcaster cell phone service.

PARENTS: If you are buying new shoes for your students, grades K-12, please try to make them non-marking soles if possible.

NATIONAL SCHOOL LUNCH & BREAKFAST PROGRAM

The Mound City R-2 School District announced its revised free and reduced price policy for school children unable to pay the full price of meals served in schools under the National School Lunch Program and the School Breakfast Program.

Local education officials have adopted the following family-size income criteria for determining eligibility:

Household Size	Maximum Household Income Eligible for Free Meals			Maximum Household Income Eligible for Reduced Price Meals		
	Annually	Monthly	Weekly	Annually	Monthly	Weekly
1	\$15,301	\$1,276	\$295	\$21,775	\$1,815	\$419
2	20,709	1,726	399	29,471	2,456	567
3	26,117	2,177	503	37,167	3,098	715
4	31,525	2,628	607	44,863	3,739	863
5	36,933	3,078	711	52,559	4,380	1,011
6	42,341	3,529	815	60,255	5,022	1,159
7	47,749	3,980	919	67,951	5,663	1,307
8	53,157	4,430	1,023	75,647	6,304	1,455
Each additional household member	+5,408	+451	+104	+7,696	+642	+148

Children from families whose current income is at or below those shown are eligible for free or reduced price meals. Applications are available at the school office. To apply, fill out a Free and Reduced Price School Meals Family Application and return it to the school. The information provided on the application is confidential and will be used only for the purpose of determining eligibility. Applications may be submitted any time during the school year. A complete application is required as a condition of eligibility. A complete application includes: (1) household income from all sources or Food Stamp/Temporary Assistance case number, (2) names

LEGAL NOTICES



Notice of Tax Certificate Sale

The following is a publication of land in Holt County, Missouri, upon which a tax certificate is to be offered for sale at the Courthouse door, on Monday, August 24, 2015, at ten o'clock in the morning (10:00 a.m.), according to the provisions of Chapter 140: Revised Statutes of the State of Missouri 2008.

The land to be sold under the description as listed and the amount as shown due represents the total amount of taxes, interest, and costs, including the cost of the sale; and the certificate will be issued covering as much land as is necessary to discharge the total taxes, interest, and the charges as are due at the time of the sale.

The land to be offered is as follows:

Amos, Ronald & Kathleen: Parcel No. 09-9-31-03-10-04.000, S 1/2 Lots 20-22, Blk 16, Mound City Ext. Co Add., Mound City - 2012, \$682.07; 2012 City, \$221.15; 2013, \$780.21; 2014, \$722.59.
Total taxes and costs: \$2,406.02

Bammer, Jerry A.: Parcel No. 08-5-22-00-00-01.001, Bgn NE cor of Sec; SW 00" 352.15'; NW 89" 200.71'; NE 00" 352.15'; SE 89" 200.71 to POB in 22-62-39 - 2012, \$632.00; 2013, \$523.38; 2014, \$490.61.
Total taxes and costs: \$1,645.99

Blevins, Charles L., Attn: Marla VanHoutan: Parcel No. 13-9-32-04-05-02.000, Comm 60' S & 672' E SW cor Blk 2; S 195'; E 112'; N 195'; W 112' to POB, Fortescue - 2011, \$257.24; 2012, \$223.49; 2013, \$175.62; 2014, \$153.34.
Total taxes and costs: \$809.69

Burton, Kevin J. & Elizabeth E.: Parcel No. 17-9-29-04-08-17.000, Lots 1-5, Blk 48, Forest City O.T. - 2012, \$614.20; 2013, \$290.80; 2014, \$260.55.
Total taxes and costs: \$1,165.55

Dungan, Craig A. & Mara E. - B & Meats: Parcel No. 17-8-27-04-10-05.000, 65' x 80' Center of Lot 7, Blk 8, Oregon O.T., bgn 38' E of SW cor of Lot 7 - 2012, \$2,015.48; 2013 \$1,736.93; 2014, \$1,441.13.
Total taxes and costs: \$5,193.54

Guthrie, Paul E. Estate, Attn: Tim Smith: Parcel No. 09-9-31-02-03-02.000, .39 A Tract bgn 50' N & 294' W of SE cor NE 1/4 NW 1/4, then NW 130'+/-, then W 130', then SE 130'+/-, then E 130' to POB in 31-62-38 - 2012, \$112.47; 2013, \$90.49; 2014, \$83.63.
Total taxes and costs: \$286.59

Harper, Amy (Freeman): Parcel No. 04-9-30-01-04-04.001, Lot 2, Blk 1, Coming O.T. - 2012, \$49.22; 2013, \$10.76; 2014, \$9.16.
Total taxes and costs: \$69.14

Harvey, Karen Jo: Parcel No. 17-9-29-03-01-09.000, Lots 1, 2 and 3, Blk 8, Forest City O.T. - 2010, \$254.59; 2011, \$208.87; 2012, \$196.32; 2013, \$86.10; 2014, \$74.41.
Total taxes and costs: \$820.29

Hughes, Goldie M., Attn: James R. Rogers: Parcel No. 07-1-11-04-04-05.000, Lots 3-5, exc SW 40', Blk 3, Craig O.T. - 2012, \$77.93; 2013, \$35.11; 2014, \$31.27.
Total taxes and costs: \$144.31

Justus, Dixie: Parcel No. 10-2-09-01-23-08.000, N 15' Lot 21 and all Lots 22-25, Blk 8, Barnard's Add., Maitland - 2012, \$380.83; 2013, \$281.95; 2014, \$244.33.
Total taxes and costs: \$907.11

Kinney, William R., Lou, & Wylie B., Attn. Kinney, Luellyn: Parcel No. 12-3-06-02-01-03.000, E 60' Lots 2 & 3, Blk. 6, Mound City O.T. - 2012, \$330.08; 2013, \$354.59; 2014, \$328.28.
Total taxes and costs: \$1,012.95

Klaasmeyer, Clinton D.: Parcel No. 17-8-27-04-24-10.000, W 40' Lots 6 and 7, Blk 13, Oregon O.T. - 2012, \$227.06; 2013, \$166.95; 2014, \$139.03.
Total taxes and costs: \$533.04

Klaasmeyer, Clinton D. & Rosalie: Parcel No. 17-7-26-03-17-03.000, Lot 6, Blk 49, Oregon O.T. - 2012, \$610.55; 2013, \$503.48; 2014, \$415.62.
Total taxes and costs: \$1,529.65

Knapp, James William: Parcel No. 09-9-31-03-01-02.000, Lot 8, Blk 3, Mound City Extension Co Add. - 2012, \$68.49; 2012 City, \$10.67; 2013, \$38.26; 2014, \$35.22.
Total taxes and costs: \$152.64

Lovelady, Marjorie, Attn: Howard Lovelady: Parcel No. 17-9-32-02-04-01.000, N 1/2 S 1/2 Lot 15, Blk 23, Forest City O.T. - 2012, \$43.50; 2013, \$5.92; 2014, \$5.09.
Total taxes and costs: \$54.51

Lundblade, John R. & Pam D.: Parcel No. 07-5-22-00-00-01.002, 2.35 A Tract in NW 1/4 NW 1/4 NW 1/4 NE 1/4 in 22-62-40 - 2011, \$575.55; 2012, \$294.24; 2013, \$602.38; 2014, \$586.81.
Total taxes and costs: \$2,058.98

Morris, Dale R.: Parcel No. 11-8-33-01-01-07.000, 1.50 A tract in NW 1/4 NE 1/4 bgn 600' +/- S and 478.5' E of NW cor thereof in 33-61-37 - 2012, \$650.21; 2013, \$643.71; 2014, \$537.14.
Total taxes and costs: \$1,831.06

Morris, Dale R.: Parcel No. 13-9-32-04-04-02.000, 2.50 A tract in N 1/2 SE 1/4, bgn 60' W and 170' S of NW cor, Blk 2, Fortescue, O.T., then W to Little Tarkio Creek, S along creek 390', E 355' to W r/w 3rd St., N 370' to POB - 2012, \$501.87; 2013, \$438.11; 2014, \$382.26.
Total taxes and costs: \$1,322.24

Morris, Phyllis; Morris, Dale R.; Morris, Michael T.: Parcel No. 13-2-10-03-03-01.000, Lots 1-4 and E 1/2 Lots 17 and 18, Blk 8, Bigelow, O.T., and also alley adj to said lots - 2012, \$72.02; 2013, \$31.02; 2014, \$28.63.
Total taxes and costs: \$131.67

Neemann, Donald A. and Rebecca L.: Parcel No. 07-1-12-03-04-03.000, Lot 5, Blk 2, Gaskill and Cannon's Add., Craig - 2010, \$450.84; 2011, \$417.47; 2012, \$377.43; 2013, \$290.03; 2014, \$259.73.
Total taxes and costs: \$1,795.50

Nowling, David Duane & Mary Ellen: Parcel No. 07-1-02-00-00-10.000, 20.2 A. tract bgn @ NE cor SE 1/4 in 2-62-40 - 2012, \$419.22; 2013, \$328.40; 2014, \$282.89.
Total taxes and costs: \$1,030.51

Nowling, David Duane & Mary Ellen: Parcel No. 12-3-06-02-09-02.000, Lot 2 & N 13' Lot 3, Blk. 4, Mound City O.T. - 2012, \$800.96; 2012 City, \$225.96; 2013, \$889.75; 2014, \$818.46.
Total taxes and costs: \$2,735.13

Nowling, David Dean; Nowling, David Duane: Parcel No. 07-1-12-03-04-06.000, Lots 14 and 15, Blk 2, Gaskill and Cannon's Add., Craig - 2012, \$284.11; 2013, \$210.60; 2014, \$188.53.
Total taxes and costs: \$683.24

Parsley, Brian: Parcel No. 17-8-27-04-28-03.001, Comm SW cor Lot 4, Blk 10, Western Add., Oregon, then S 48'; E 77'; N 48'; W to POB - 2012, \$66.86; 2013, \$31.88; 2014, \$26.40.
Total taxes and costs: \$125.14

Potts, Theodore & Tammy: Parcel No. 17-7-26-03-01-02.000, 1 A tract bgn @ SE cor Lot 44, W 120', N 40', W 40', N 258' +/- to S r/w Spruce St., E 160' +/-, S 300' +/- to POB, incl part Lots 44, 45 and 46, O'Fallon View Add., Oregon - 2012, \$625.79; 2013, \$461.89; 2014, \$377.81.
Total taxes and costs: \$1,465.49

Pulley, Tobin Lee: Parcel No. 13-4-19-02-01-45.000, Lot 60, Ideker Sub., Big Lake - 2012, \$474.61; 2013, \$397.17; 2014, \$343.20.
Total taxes and costs: \$1,214.98

Purdy, Sharon Estate; Donald Purdy: Parcel No. 13-9-31-03-01-02.000, 4.60 A tract W 1/2 SW 1/4, lying N of old Hwy. 118, exc comm NW cor SW 1/4, E 360'; along N Hwy. 118 r/w to W sec line; thence N to POB, Big Lake Village, Sec 31-61-39 - 2012, \$206.07; 2013, \$148.58; 2014, \$129.63.
Total taxes and costs: \$484.28

Purdy, Sharon Estate; Donald Purdy: Parcel No. 13-9-31-03-02-01.000, 3.60 A tract in NW 1/4 SW 1/4, 31-61-39, Big Lake Village - 2012, \$58.34; 2013, \$19.56; 2014, \$17.10.
Total taxes and costs: \$95.00

Robinson, Eric & Jennifer: Parcel No. 09-1-02-00-00-05.001, 1.65 A tract SW 1/4; bgn @ SE cor SW 1/4 of 2-62-38, etc. - 2012, \$741.97; 2013, \$613.75; 2014, \$532.06.
Total taxes and costs: \$1,887.78

Rogers, James Ray: Parcel No. 07-1-11-04-04-15.000, Lots 13 & 14, Blk. 3, Ward Add., Craig - 2012, \$387.98; 2013, \$228.54; 2014, \$204.59.
Total taxes and costs: \$821.11

Schuetz, Nick: Parcel No. 17-9-32-01-04-04.000, Lots 7, 8 and 9, Blk 40, Forest City, O.T. - 2011, \$328.48; 2012, \$307.69; 2013, \$227.89; 2014, \$204.15.
Total taxes and costs: \$1,068.21

Selleck, Michael Sr.: Parcel No. 13-9-32-04-02-05.000, Lots 13-20, Blk. 1, Fortescue, O.T. - 2012, \$679.89; 2013, \$607.21; 2014, \$528.76.
Total taxes and costs: \$1,815.86

Selleck, Michael Sr.: Parcel No. 13-9-32-04-05-01.000, Comm 60' S and 784' E SE cor Blk 2; S 195'; E 224'; N 195'; W 224' to POB, Fortescue - 2012, \$136.35; 2013, \$94.05; 2014, \$81.74.
Total taxes and costs: \$312.14

Stevens, Glenn & Miller, Connie: Parcel No. 14-7-36-01-01-02.000, Tract in NE 1/4 NE 1/4, bgn 50' NE of NE cor Lot 1, Ramsey's Add., Big Lake - 2012, \$243.34; 2013, \$202.45; 2014, \$160.83.
Total taxes and costs: \$606.62

Stoner, Mark A.: Parcel No. 13-4-18-00-00-02.001, E 31.5' Lots 16 & 17 & all Lots 18-31, Mathews Manor Sub., in 18-61-39 - 2012, \$436.10; 2013, \$359.20; 2014, \$327.41.
Total taxes and costs: \$1,122.71

Stoner, Mark: Parcel No. 09-9-31-04-02-07.000, Lots 7 & 8, Blk. 11, Mound City Ext. Co. Add. - 2012, \$147.67; 2013, \$134.02; 2014, \$123.94.
Total taxes and costs: \$405.63

Thrash, William A. & Kathleen V. Estates: Parcel No. 7-1-11-04-15-03.000, Lots 12 & 13, Blk. 5, Craig O.T. - 2011, \$789.21; 2012, \$710.01; 2013, \$573.13; 2014, \$513.43.
Total taxes and costs: \$2,585.78

Tittsworth, Lisa: Parcel No. 09-6-14-00-00-03.000, 2.70 A tract N 325' of W 400' of NW 1/4 NW 1/4, exc Co Rd r/w in 14-62-38 - 2012, \$1,152.38; 2013, \$977.67; 2014, \$847.64.
Total taxes and costs: \$2,977.69

Vangundy, Jeffery: Parcel No. 10-2-09-01-07-01.001, Lot 22, Blk 3, Elliott Heights, Maitland, and tract bgn @ SW cor Lot 12, Blk 2, Barnard Add., Maitland, then E 25'; N 124.5'; W 15'; S 124.5' to POB (with 12 x 56 mobile home) - 2012, \$308.63; 2013, \$171.11; 2014, \$148.23.
Total taxes and costs: \$627.97

Vangundy, Jeffery Richard: Parcel No. 10-2-04-04-05-02.000, Lot 13, Blk 2, Barnard Add., Maitland - 2012, \$84.59; 2013, \$41.82; 2014, \$36.08.
Total taxes and costs: \$162.49

Vangundy, Jeffery Richard: Parcel No. 10-2-09-01-07-01.000, Tract bgn @ SE cor Lot 12, Blk 2, Barnard Add., Maitland, then N 60', W 178', S 57', E 225' to POB - 2012, \$933.45; 2013, \$782.84; 2014, \$677.89.
Total taxes and costs: \$2,394.18

I, Donna Cotton, Collector of the County of Holt, State of Missouri, do hereby certify that the foregoing is a true and correct list of the land that will be offered for sale as set forth above.

Donna Cotton, Collector

3/3tc

Notice of Tax Levy Hearing

The Mound City Rural Fire Protection District will hold a public hearing to set the 2015 property tax levy rate. The meeting will be held at the Mound City Rural Fire Station located at 131 Airport Lane, Mound City, starting at 6 p.m. until 7 p.m. on Monday, August 10, 2015.

4/2tc

NOTICE OF TRUSTEE'S SALE

For default in the payment of debt secured by a deed of trust executed by Kristina L. Wright, dated June 26, 2009, and recorded on June 29, 2009, Document No. 20090592, in Book No. 389, at Page 885 in the Office of the Recorder of Deeds, Holt County, Missouri, the undersigned Successor Trustee will, on July 31, 2015, at 12:30 p.m., at the North Door of the Holt County Courthouse, Oregon, Missouri, sell at public vendue to the highest bidder for cash:

Commencing at a point 58.56 feet East of the Northwest corner of the Northeast Quarter of Section 34, Township 60, Range 38; thence South 12 rods 16 links; thence East 150 feet, thence North 12 rods 16 links; thence West 150 feet to the point of beginning, commonly known as 604 West Linden Street, Oregon, MO 64473,

subject to all prior easements, restrictions, reservations, covenants and encumbrances now of record, if any, to satisfy the debt and costs.

SouthLaw, P.C. f/k/a South & Associates, P.C.
Successor Trustee

First publication: July 9, 2015

For more information, visit www.southlaw.com

Notice

Pursuant to the Fair Debt Collection Practices Act, 15 U.S.C. §1692c(b), no information concerning the collection of this debt may be given without the prior consent of the consumer given directly to the debt collector or the express permission of a court of competent jurisdiction. The debt collector is attempting to collect a debt and any information obtained will be used for that purpose Casefile No. 121226-747446.

1/4tc

NOTICE OF PUBLIC HEARING
2015 PROPERTY TAX RATES

A public hearing will be held at 5:30 p.m., Tuesday, August 11, 2015, at City Hall in Mound City at which time citizens may be heard on the property tax rates proposed to be set by the City of Mound City. The tax rates shall be set to produce the revenues which the budget for the fiscal year beginning July 1, 2015, shows to be required from the property tax. Each tax rate is determined by dividing the amount of revenue required by the current assessed valuation. The result is multiplied by 100 so the tax rate will be expressed in cents per \$100 valuation.

Assessed Valuation (by categories)	Prior Tax Year 2014	Current Tax Year 2015
Real Estate	\$ 8,947,165	\$ 9,358,535
Personal Property	\$ 3,465,497	\$ 3,856,189
Total Assessed Valuation	\$12,412,662	\$13,214,724
Valuation due to New Construction	\$ 55,890	\$ 734,402
Increase in Revenue due to New Construction	\$1,066 (0.45%)	\$13,856 (5.88%)
Fund	Property Tax Revenues Budgeted for 2015	Proposed Tax Rates for 2015 (Per \$100)
General	\$ 95,300	\$.7628
Street Light	\$ 34,500	\$.2800
Park	\$ 33,200	\$.2724
Library	\$ 50,600	\$.4080
Health	\$ 20,450	\$.1635
Totals	\$ 234,050	\$ 1.8867

Based on best available information at this time and may be adjusted prior to September 1, 2015.

Mayor & Board of Aldermen, City of Mound City
Patsy Smith, CMC/MRCC, City Clerk

4/1tc

NOTICE OF ELECTION

In accordance with Chapter 115 of the Laws of Missouri, notice is hereby given that a Special Election will be held in the County of Holt, Missouri, on August 4, 2015, at which election all registered voters residing within the County of Holt will be given the opportunity to vote. Polling places for the said election will open at 6:00 a.m. and close at 7:00 p.m. The official ballot for the said election will be substantially the following form:

OFFICIAL BALLOT

SEE SAMPLE BALLOT

SAMPLE BALLOT
SPECIAL ELECTION
AUGUST 4, 2015
HOLT COUNTY, MISSOURI

NOTICE OF ELECTION

Notice is hereby given that the Special Election will be held in the County of Holt on Tuesday, August 4, 2015 as certified to this office by the participating entities of Holt County. The ballot for the Election shall be in substantially the following form.

COUNTY OF HOLT

QUESTION

Shall the County of Holt impose a countywide sales tax at the rate of one-half of one percent (½ of 1%) for a period of ten (10) years from the date on which said tax is first imposed for the General Purpose Sales Tax for General Revenue of Holt County? 67.547 RSMo.

☐ YES
☐ NO

Notice of Open Meeting

Notice is hereby given that Kathy J. Holstine, Election Authority for Holt County, will convene the Verification Board for the August 4, 2015, Special Election, at a meeting to be held at 3:00 p.m. August 7, 2015, at the Holt County Courthouse, Commissioner's Room, 102 West Nodaway St., Oregon, MO.

The tentative agenda includes:
Convening the Board
Verification of the count
Certification of election results
Adjournment

Representatives of the news media may obtain copies of this notice by calling: Kathy J. Holstine, Holt County Clerk, PO Box 437, Oregon, MO, 64473, Phone: (660) 446-3303.

Given under my hand and the official seal Holt County, Missouri, this 1st day of July, 2015.

(SEAL)

(signed) Kathy J. Holstine,
Holt County Clerk and Election Authority

Polling Places of Holt County, Missouri

Polling Places are based on School District Boundary Lines:

Polling Place	Townships	School/Precinct
Nazarene Church 105 Ensworth St. Craig, MO	Lincoln Union Portions of Bigelow Portions of Minton	All of Craig R-3 School District Northwest West
Maitland Fire House 101 Elm St. Maitland, MO	Clay Portions of Liberty Portions of Hickory	All of Nodaway-Holt R-7 School District Northeast Southeast
City Hall 205 E. 6th St. Mound City, MO	Benton Portions of Liberty Portions of Bigelow Portions of Forest Portions of Hickory	All of Mound City R-2 School District Central Northwest Southeast Northeast West
TJ Hall Building 104 S. Main St. Oregon, MO	Lewis Forbes Nodaway Portions of Hickory Portions of Minton Portions of Forest	All of South Holt R-1 School District Southeast West Southwest

The polling places will be open from the hours of 6:00 a.m. to 7:00 p.m. during which time any person properly registered to vote in the County will be given the opportunity to cast his or her ballot.
Done by order of the County Clerk of the County of Holt.

Notice of Accessibility

FURTHER NOTICE IS GIVEN that, where a regular polling place has limited accessibility, a disabled or elderly voter may be provided an alternative means of casting his or her ballot. Such means may include reassignment to an accessible polling place, curbside voting, assisted voting or voting by absentee ballot. A voter may apply for an absentee ballot in person or by mail, or may have a relative or guardian apply in person on his or her behalf. If a voter is permanently disabled, he or she may have the notary requirement for absentee balloting waived by filing a physician's statement concerning the disability. In addition, voters requiring assistance may be assisted by a person of the voter's choice.

FOR MORE INFORMATION ON REGISTRATION AND VOTING: Persons may contact Kathy J. Holstine, Holt County Clerk, by telephone at 660-446-3303; or by mail at PO Box 437, Oregon, MO 64473.

The Missouri Secretary of State's Office provides a toll free number for persons with hearing impairments who have access to a Telecommunications Device for the Deaf (TDD). TDD users may call 1-800-669-8683 to obtain information on polling places, absentee balloting, voter registration and other election-related services available in their local jurisdiction and from the State of Missouri.

3/2tc

JEAN MANEKE
ATTORNEY-AT-LAW



115 West Nodaway
Oregon, Missouri
660-446-3453



Phone Answered 5 Days a Week
Office Hours 9:00 a.m. to 4:30 p.m. Every Tuesday
Principal office in Kansas City, MO



24 HOURS/DAY - 7 DAYS/WEEK

Mound City, MO
660-442-3210 (Shop) • 660-253-2432 (Cell)
www.doubledtowingllc.com
Dale Heming • Dustin Heming • Scott Panning

Classifieds

GET THE JOB DONE!

Buy • Sell • Trade • Rent
Hire • Thank You/Remembering • Legal Services

Call The Mound City News To Place Your Ad • 660-442-5423

MISCELLANEOUS

HOWARD'S GUN RE-PAIR- 12315 Hwy. 59, Craig, Mo., 64437. 660-683-9401. 17/tfc

FREE END ROLLS- At the Holt County Publishing building north of Mound City on Hwy. 59. 31/tfc

FOR RENT

FOR RENT- Trailer. 214 High St., Lot 5, Mound City. More coming for rent soon. Call Angela Turner at 660-623-1014. 50/tfc

FOR SALE

FOR SALE- 1993 Century Buick, 4-door, low mileage, like new. Call Jerry at 816-769-2811. 4/tfc

CONSIGN NOW FREDERICKS' CONSIGNMENT AUCTION

Falls City, NE
Saturday, Sept. 5
Farm Machinery & Misc.
Storage Available

DEADLINE APPROACHING FAST
Deadline for sale bill is
Wednesday, August 12

Trucking Available
To Consign Call:
Leon - 402-245-3762
Steve - 402-245-3227
www.frederickauction.com

Bradbury Salvage & Recycling

660-572-0446
Forest City, MO

- Any type of metal
- Batteries
- And much more!

Free drop off at
206 Commercial St.
OR FREE PICK-UP



BRING US YOUR DESIGN & THE
BEST PRICE YOU CAN FIND
ON SCREEN PRINTED T-SHIRTS,
SWEATSHIRTS OR HOODIES AND
WE'LL COMPARE YOUR
FINAL COST.
IF WE'RE NOT ALREADY LOWER
WE'LL MATCH IT!
(YOU MUST PROVIDE A VERIFIABLE QUOTE)

**Stripes
& signs**

& Other Neat Stuff!

Falls City, NE • 402-245-5323

SEE THE QUALITY OF OUR WORK AT
stripesandsigns.com

GREG'S JEWELRY - Located at 307 E. 5th St. in Mound City, Mo., offers peridot jewelry, August's birthstone. Call 660-442-3739 for all your jewelry needs. 4/tfc

EMU OIL- Arthritis and joint pain, burns and sunburns, aging skin, cuts and abrasions. Hand lotion. G. & L Enterprises. Call 816-387-7332 or 660-442-5688. 40/tfc

HELP WANTED

REGISTERED NURSE

Tiffany Heights, a 60-bed skilled facility is seeking a Director of Nursing. Knowledge of clinical systems, electronic records and nursing management is required. Team building, communication and leadership skills a must.

Send resume to Tammy,
Tiffany Heights, 1531 Nebraska
St., Mound City, MO 64470; or
call 660-442-3146. EOE

TRUCKERS

IRS FORM 2290 HIGHWAY USE TAX

*Electronically Filed, Instant
Results, Economically Priced*

LARRY RUSSELL TAX SERVICE

210 East 5th Street
(2 blocks north of GM dealer)
Mound City, MO
Phone: 660-442-5805

COTTON BODY SHOP & TOW SERVICE

Larry & Troy Cotton
Oregon, MO
Shop: 660-446-2008
Home: 660-446-2561

Timberview Roofing

**NOW OFFERING
SEAMLESS GUTTERING**
Chris Clement
816-390-3002 (Cell)
660-935-2219 (Office)
660-652-3033 (Home)

CLASSIFIED ADVERTISING
CALL 660-442-5423

REAL ESTATE

FOR SALE- Small house in Mound City. Large outbuilding. Priced right. May finance. Call 417-592-0796. 3/4tc

FOR RENT

**One-bedroom, newly
remodeled house in
Oregon, MO. Kitchen ap-
pliances, whirlpool bath.
Available in August.**
Call 660-491-2234
or 660-446-2234

FOR RENT

**Very nice 3-bedroom,
2-bath home in Oregon, MO.
Finished basement, two-car
garage, deck, NO PETS.**
Call 660-491-2234
or 660-446-2234

Northridge Place Apartments Mound City, MO

Now Taking Applications.

Utilities and cable included. Must be 62 or disabled to apply.
660-442-3128, Ext. 5502

Equal Housing Opportunity

Timber Run Apartments Mound City, MO

Apartments Available.
Now taking applications.

660-442-3128, Ext. 5502

Equal Opportunity Provider & Employer

ENTERPRISE REALTY LLC

Randy James, Broker
Jim Loucks, Sales Agent
816-390-2749 • Office 660-582-7160
www.entrealty.com

LAND FOR SALE



**Kathi
Clement
Realty**
www.kathiclementrealty.com

1423 State St. • Mound City, MO 64470
660-442-6500 • Cell: 816-387-3018
kathiclement@yahoo.com
Kathi Clement, Broker

**Johnson
Heating
and
Cooling**

Casey Johnson,
Owner

660-442-6354

Licensed and Insured
Specializing with Trane and Heil models

Brad Pankau's Home & Farm Repair

Roofing, siding, interior/exterior painting,
decks, gutter installation & cleaning, electrical &
plumbing, drywall & interior remodeling,
tree trimming & removal, etc.

BARN & IMPLEMENT SHED REPAIR!

No job is too small! ~ Fully Insured

Call 660-442-3354, 660-254-0156, or 660-442-6343.

THANK YOU/REMEMBERING

Thank You

The family of Ronnie Tenney would like to thank our community for the many cards, acts of kindness, comforting words and countless hugs. We also want to thank the members of the American Legion, whose participation in his service was greatly appreciated. Losing a loved one is always difficult, but you have made his passing much easier for us all.

Love and Blessings

The Trojanette Softball teams would like to thank the following sponsors for their support during the 2015 season:

Tiffany Care Centers, Open Season Gun Shop, NorthwestCell, Jayson Johnson Insurance, Mound City Lumber, American Family Insurance-Taylor Crouse, Midwest Data Center, Schoonover Oil Company, Dennis Murphy, Poor Boys Kwik Stop, Mound City News, Floyd and Lindsey Johnson, Hiawatha Implement, Miller Welding and David and Rita Carroll.

We would also like to thank those that purchased Red Wheel products, supported the 3rd and 4th and 5th and 6th grade basketball tournaments, purchased items at the garage sale, purchased Royals tickets and purchased gun raffle tickets.

MOWING WANTED

**PASTURES, UNPLANTED
ACRES, CRP, WATERWAYS,
FENCE ROWS, ETC.**

By the hour, acre or job.

**Call 816-390-4523 or
816-390-2749**

S & S Electrical Contractors

Licensed & Insured

Now An Authorized Dealer & Installer Of

Cummins Generators
**Power
Generation**



Sean Slocum
660-491-1115 • 660-442-3165 • slocum@centurylink.net

GORDON AUTOBODY

QUALITY COLLISION REPAIR

110 E. 5th St., Mound City, MO 64470

PHONE: (660) 442-3400

FAX: (660) 442-5511

HOURS: MONDAY - FRIDAY 8-5

SATURDAYS BY APPOINTMENT



J & E Concrete

Commercial & Residential Concrete Work

Jeff Karsten

Cell: 816-262-5933

Free Estimates

**NAUMAN
CONSTRUCTION, INC.**
EST. 1980



GENERAL CONTRACTING
Remodeling ~ Custom Cabinets ~ Carpentry
Granite, Solid-Surface, Quartz Countertops

307 State Street

Mound City, MO 64470

tracy@naumanconstruction.com

Shop: 660-442-5290

Hugh: 816-383-3001

Tracy: 816-596-7159

Crop insurance deadline extension would benefit Missouri farmers

U.S. Senator Claire McCaskill urged the U.S. Department of Agriculture to approve crop insurance coverage needs reported after the agency’s federal deadline, to benefit farmers and growers unable to submit their reports any earlier due to the year’s record rainfall.

“This is a critical issue for Mis-

souri farmers,” McCaskill wrote in a letter to Agriculture Secretary Tom Vilsack. “I believe that there is a potential solution that would leave all current deadlines in place while still enabling Missouri farmers to obtain essential coverage for this year’s crops. Under [Department of Agriculture] regulations, [the Risk Management Agency] “may elect to determine by unit the insurable crop acreage, share, type and practice” even if a farmer fails to submit acreage report by the reporting deadline. This year’s record rainfall, which prevented so many Missouri farmers from getting their crops in the ground until early July, is good cause for the Risk Management Agency to exercise its discretion to approve coverage for acreage reported after the deadline.

McCaskill’s letter follows a lawsuit filed against the Department of Agriculture by Missouri Attorney General Chris Koster,

in pursuit of an extension on the annual acreage submission requirements for Missouri farmers.

McCaskill is a longtime advocate for ensuring Missouri’s farmers and ranchers have the resources they need to succeed, and for preventing unreasonable rules and regulations on producers. Last year’s bipartisan farm bill, which McCaskill supported, ended direct payments and replaced them with a program of crop insurance options to ensure farmers and ranchers retain a basic safety net.

The full text of the letter is below:

July 24, 2015

The Honorable Tom Vilsack
Secretary
U.S. Department of Agriculture
1400 Independence Ave., S.W.
Washington, DC 20250

Dear Secretary Vilsack:

I write regarding the lawsuit Missouri Attorney General Chris Koster filed against your office last week. I understand he is seeking an extension for Missouri farmers to submit their annual acreage reports to USDA’s Risk Management Agency (RMA), one of the prerequisites for purchasing federal crop insurance. I also understand the deadlines for annual acreage reports are set by federal regulation and written into the terms and conditions of FCIC-approved contracts issued by third-party insurance companies.

This is a critical issue for Missouri farmers. I believe that there is a potential solution that would leave all current deadlines in place while still enabling Missouri farmers to obtain essential coverage for this year’s crops. Under USDA regulations, RMA “may elect to determine by unit the insurable crop acreage, share, type and practice” even if a farmer fails to submit acreage report by the reporting deadline. This year’s record rainfall, which prevented so many Missouri farmers from getting their crops in the ground until early July, is good cause for RMA to exercise its discretion to approve coverage for acreage reported after the deadline.

It is the longstanding practice of Missouri farmers to have their annual acreage reports certified at their local Farm Services Agency (FSA) office before delivering them to their insurance agents. I therefore expect many of the late acreage reports submitted by Missouri farmers this year have already been certified by another arm of USDA, making it all the more reasonable for RMA to exercise its regulatory discretion to approve coverage notwithstanding the missed deadlines.

I hope you will give this proposal serious consideration so that farmers in Missouri have full access to crop insurance and so that drawn out litigation can be avoided.

Sincerely, Claire McCaskill, United States Senator

TAX FREE
WEEKEND
AUGUST 7-9

GET YOUR
#BOOTSANDPANTS
#BACKPACKS
FOR BACK TO SCHOOL

rediscover
EAST HILLS
Shopping Center

ST. JOSEPH, MO WWW.SHOPEASTHILLS.COM

Grand Opening

Friday Evening, July 31 -
ALL YOU CAN EAT!
Catfish Fillets &
Fried Chicken - \$11.99

Saturday, August 1

Prime Rib Dinner - \$19.99

LIVE MUSIC
PAGE 2 BAND 9 p.m.-1 a.m.

Drink
Specials

Sunday Buffet - Weekly - 11 a.m.-2 p.m.

The Klub

Tuesday-Saturday: 11 a.m.-Close; Sunday: 11 a.m.-2 p.m.
North End Of Nebraska St., Mound City • 660-442-5582
f CHARLIE & BETTY TRIGGS, MANAGERS



New home for Farmers Mutual Insurance Company

Farmers Mutual Insurance Company in Mound City - Moved to its new home at 1411 State Street on Monday, June 1, from its downtown location at 505 State Street. The newly constructed building has a large reception area, three offices and a conference room. The lower level is being used for storage at this time. Jeremy Johnson, manager and treasurer of the company, states that an open house will be held in the near future. He and his brother, Jayson Johnson, secretary of the company, have been inundated with crop insurance claims due to the extreme weather conditions the area has been experiencing and have been unable to dedicate time to the completion of the move.

(RIGHT) The team at Farmers Mutual Insurance Company - Poses in the new building at 1411 State Street in Mound City that houses the company. Pictured, left to right, are Company Secretary Jayson Johnson; Customer Service Representative Jennifer Tenney; and Company Manager and Treasurer Jeremy Johnson. An open house is planned in the near future to give the public a chance to visit with the staff and tour the building. Watch for details in future editions of the Mound City News.



SATURDAYS IN AUGUST

\$12,500 CASH GIVEAWAY!

AUGUST 2015

Events' Schedule

BUT WAIT...THERE IS MORE!

Each winner will get the chance to win \$2,500 in CASH every Saturday night by getting to draw a key for the “Keys to Riches” machine. If their key opens the machine, they are the winner of \$2,500 in CASH that Saturday night, with there only being one winner per Saturday night. Once the door is opened, the key drawings will restart the next Saturday night. If their key does not open the door, the next winner will get the chance to win the \$2,500 in CASH. Now if by some chance, no one is able to open the door to the “Keys to Riches” machine that night, the next Saturday night will go up \$2,500 more in CASH. Example August 1 - \$2,500, if no one gets the key it goes to \$5,000 on August 8, and will progress until the door is opened, then it will go back to \$2,500 the next Saturday night.

New Members Get \$25 in Promo Cash for Signing Up!

SUNDAYS - 3X POINTS 9 a.m.-Noon!

“Hot Seat Spin the Wheel” Drawings to win up to \$100 in Promo Cash, hourly, 4 p.m.-11 p.m.

MONDAYS - 3X POINTS 9 a.m.-Noon!

“Hot Seat Spin the Wheel” Drawings to win up to \$100 in Promo Cash, hourly, Noon-11 p.m.

TUESDAYS - PRIME TIME TUESDAYS!

PRIME TIME TUESDAYS! \$2 OFF LUNCH BUFFET & \$2 OFF DINNER BUFFET (55 & OVER)

“Hot Seat” Drawings to win \$50 in Promo Cash, every half hour, 1-5 p.m. Ticket Drawings, 6-11 p.m.

WEDNESDAYS - Spin the Wheel

“Spin the Wheel” Drawings to win up to \$75 in Promo Cash, hourly, Noon-5 p.m. Ticket Drawings, 6-11 p.m. We will match your spin!

THURSDAYS - 3X Points 9 a.m.-Noon!

“10X Hot Seat” Drawings, hourly, 4-11 p.m. Roll the two dice and take that times 10, that is what you will win in Promo Cash.

FRIDAYS - Progressive Hot Seat

“Progressive Hot Seat” Drawings every hour, 4 p.m.-2 a.m. Starting with \$50 in Promo Cash at 4 p.m. and every hour after will progress \$25 in Promo Cash. Every time a ticket is drawn and no one is here to claim the prize, that hour’s amount will go up \$20 in Promo Cash until there is a winning name drawn.

BINGO - Buy 1 Get 1 Free Night ~ August 19th!

ALL THE 9-ON’S YOU CAN PLAY FOR \$20, AUGUST 5TH.

CASINO
WHITE CLOUD

5 Miles West of White Cloud, KS • Toll Free 877-652-6115
Casino Hours: Sun.-Thurs. - 9 a.m. - 1 a.m.
Fri. & Sat. - 9 a.m. - 3 a.m.
Find us on Facebook for great offers!
www.casinowhitecloud.org
Toll Free 877-652-6115 • www.Facebook.com/casinowhitecloud

9th Annual Dakota Brone Sisk
MEMORIAL RODEO

AUGUST 7 & 8, 2015

24544 STATE HWY A BARNARD, MO

ADMISSION Adults \$15.00
12 & Under \$5.00
5 & Under FREE

FREE MEAL 6:00

MINI RODEO 6:30

RODEO 8:00

Pulled Pork
Cowboy Ham & Beans
Baked Potatoes
Sweet Corn

Mutton Bustin
Barrel Racing
Steer Riding

Contestants:
Can enter both nights
Added money each night.

CAN ENTER RODEO
BOTH NIGHTS

ENTRY FEE \$65 -
Admission for contestants is FREE
(No Buddy Passes)
Call ins August 1st - 3:00 p.m.
the day of performance
816-646-6124

ADDED MONEY
EACH NIGHT

Rough Stock \$500-Timed Events \$200
(Team Roping \$200 each end)
Women's Chute Doggin' \$50

www.MEMORIALRODEO.com