

## Holt County Autumn Festival underway

The Holt County Autumn Festival began its festivities on Wednesday, September 9, and will continue through Saturday, September 12. Check the September 3rd edition of the *Mound City News* for a schedule of events.

## Big Lake State Park informational meeting

An informational meeting for Big Lake State Park will be held on Saturday, September 12, from 4-6 p.m. at the Big Lake State Park shelter house. Park representatives will be providing information on future plans for the facility and answering questions.

## 9/11 lunch to honor emergency personnel in Holt County

The Mound City United Methodist is hosting a lunch for all Holt County emergency personnel to commemorate the sacrifices made by law enforcement, fire and ambulance personnel on a daily basis. The lunch will be on Friday, September 11, the 14th anniversary of the attacks on the United States of America that took the lives of thousands of people, including emergency personnel.

The lunch will be served at the church at 312 E. 7th Street in Mound City, from 11 a.m. to 1 p.m. at the honorees' convenience.

## Craig C.T.A. to hold tailgate party

Friday, September 18, prior to the Rock Port vs. Mound City football game, the Craig, R-3 Community Teachers' Association (C.T.A.) will host a tailgate party at the Mound City football field shelter house from 5-7:30 p.m. Free will donation will get a sloppy joe, chips, Dottie Biermann cookies and a drink. All proceeds will be applied to the C.T.A. Scholarship Fund.

## Craig R-3 elementary student council garage sale

The Craig R-3 elementary student council will have a garage sale on Saturday, September 19, in the Craig school's old gym in Craig, MO, 8 a.m. - 12 p.m. All proceeds will be applied to the Playground Fund.

## Final plans for 6th Annual Great Northwest Wine Fest underway

"Are you ready for a great wine fest," asks Marilyn Alldredge, coordinator for the 6th Annual Great Northwest Wine Fest sponsored by NWMO Enterprise Facilitation as its main fundraiser. "We are quite excited with the response we are getting and with the numbers of wineries, artisans, vendors, food booths and entertainment for the Saturday, September 19, event in Mound City at Griffith Park. The fun-filled event runs 12 noon to 8 p.m."

Nine Missouri wineries are participating and offering at least five different wines each for tasting: Baltimore Bend, Waverly; Jowler Creek, Platte City; Lodoga Ridge, Smithville; Pirtle Winery, Weston; PRP International Wines, Grandview; Tipple Hill, Easton; Windy Wine Company, Osborn; Weston Wine Company, Weston; and Westphalia Wine Company, Westphalia. The Klub in Mound City will be providing a bar.

Several new representations with booths this year include 40 artisans and vendors hosting their wares of jewelry, paintings and artwork, household and back porch decors, oils and vinegars, spicy food flavorings, soaps and body products, purses, handmade items and more.

There will be plenty of tasty foods to be offered with the Enchilada Lady of Oregon, MO, Mexican foods; FC Food Country of Rock Port, MO, cheese and meat trays; the Savannah, MO, Knights of Columbus Grillers with hamburgers, brats and more; Wabash Junction Restaurant, Stanberry, MO, with homemade soups and desserts; and White Rose Restaurant, Mound City, with plate dinners, sandwiches and fries. From 4:30 p.m. to 7:30 p.m. a complete gourmet meal under the shelter house hosted by FC Food catering will be served offering a choice of two entrees.

The entry fee for those tasting all the wines and receiving an etched wine glass is \$20.00. Non-drinkers and minors may enter for \$10 and children, 5-12, may enter for \$5.00. Cash, checks and credit cards are accepted. There will be plenty of tables and chairs available in the beautiful courtyard to sit, relax and listen to the fabulous entertainment. Some complimentary grape stomping will be offered. There will be plenty of parking nearby. The committee is hoping to exceed last year's attendance of 1,680. For questions, call 660-744-3146.

## Sherlyn Sipes, FNP, to join Community Hospital-Fairfax at new Oregon Clinic

Sherlyn Sipes, Family Nurse Practitioner (FNP), of Forest City, MO, will join Community Hospital-Fairfax (CH-F) in the new Oregon, MO, Clinic slated for a late 2015 opening.

"Sherlyn shares our passion for rural health care. She will be a fantastic fit for this clinic and the Community Hospital-Fairfax team," stated Roger Steinkruger, Chief Executive Officer (CEO).

Sherlyn is a board certified FNP and will provide the full scope of family medicine in the Oregon clinic including pediatric, geriatric, preventive care and all types of adult medicine. Sherlyn will be working in partnership with Dustin Carpenter, M.D., who sees patients at CH-F's Mound City Family Medicine. In addition to family medicine, Dr. Carpenter also

provides obstetrical care.

Sherlyn will be a part of the CH-F provider team giving her direct access to diagnostic services, physical, occupational and speech therapists as well as many specialty physicians and inpatient care.

"My patient care philosophy will be to treat each patient as an individual. I have a heart for rural communities and am very excited to move forward with opening this new clinic," Sherlyn commented.

Community Hospital-Fairfax continues to move forward with clinic preparations with the intention of opening in late 2015. Questions about the clinic may be addressed to Ann Schlueter at AnnS@fairfaxMed.com or (660) 686-2317.



## Clear window in the storms opens up for Market Square Day

Self-proclaimed mountain man, Donnie Wright - Pets the head of a genuine bear rug at a booth at Market Square Day in Mound City on Monday, September 7.

**MORE MARKET SQUARE DAY PICTURES - PAGE 16**

## Mound City Panthers' homecoming royalty reigns over festivities



The 2015 Homecoming kings and queens - Were crowned before the Mound City football game against Worth County on Friday, September 4. Craig R-3's royalty was, left to right, Queen Jocelyn Clayton, daughter of John and Lani Clayton; and King Chandler Monroe, son of Mark and Rebecca Monroe and Melanie Popejoy.



The 2015 Homecoming kings and queens - Were crowned before the Mound City football game against Worth County on Friday, September 4. Mound City R-2's royalty was, back row, left to right, Queen Kendey Eaton, daughter of Ken and Shelley Eaton; and King Chandler Wilson, son of Joel and Janet Luzmoor and Robert and Teresa Wilson. The kindergarten attendants were, front row, left to right, Peyton Farr, daughter of Larry and Shawna Farr; and Max Knowles, son of Jason and Gwen Knowles.

## Syngenta seed lawsuit preparations enter final phase; hold town meetings

Attorneys representing the nation's leading firm in lawsuits against Swiss seed company Syngenta will conduct one final tour of the area to discuss the losses suffered by corn farmers and elevator operators, the potential for recovering losses and the law firm's commitments to farmers who participate.

All corn farmers, elevator operators and others whose income is affected by the price of corn were hurt by Syngenta's introduction of non-approved genetically modified organisms (GMOs) into the US corn market. As a result, all are eligible to sue and potentially receive compensation.

Watts-Guerra, L.L.P., has been named lead counsel, nationally

representing American farmers, elevator operators and others affected. The law firm is among the world's leading experts in the field of assessing and litigating mass damage claims, and it has signed more than 20,000 farmers and elevator operators in the Syngenta corn lawsuit, all of whom file suit individually.

Colvin, Chaney, Saenz and Rodriguez, L.L.P. and Kirk Law Firm have been chosen as Watts-Guerra's representatives in Kansas, Nebraska and Missouri. Attorneys from both firms are attending these meetings.

A meeting will be held in Mound City on Friday, September 11, at 5 p.m. at the White Rose Restaurant.



## Soybean aphid found in area fields

The season has added another complexity for area soybean producers. Soybean aphid has been found in a few fields above economic threshold. Soybean fields should be scouted, especially those planted late.

Soybean aphid has an economic threshold of 250 aphids or more per plant on plants from flowering through partial pod fill. This is a warning population level at which treatment is justified. The economic injury level is 1,006 aphids per plant. This difference allows for a 2 to 4 day period in which to treat an increasing population of aphids. These economic thresholds and economic injury levels are for soybeans from the R1 to R5 growth stages.

Yields of 0 to 14 bushels per acre may be protected when economic infestations of soybeans are treated at the R1

stage of growth and decreases with each increasing growth stage until a yield protection of 0 to 2.5 bushels per acre is typically realized at the R5 stage of plant growth.

Growers typically ask if soybean aphid should be treated before the 250 economic threshold. The answer from numerous studies indicates no.

Should growers treat soybean plants once they reach the R6 growth stage (completion of pod fill)? No studies in the United States show advantages to treating aphid infestations on R6 or later growth stage of soybeans.

For more information, contact Wayne Flanary at 660-446-3724 or Heather Benedict at 660-425-6434, Regional Agronomists, University of Missouri Extension.

## Remembering

By Eugene Poynter

The other day some of us were talking about all of the crime, both normal and hate, such as murder, robbery, scams, abuse, stolen IDs, political maneuvering, various threats and repeated lies that are going on today. It seems as if our lives have been segregated more each day, compared to life years ago. Popular names were remembered, from Jesse James to Pretty Boy Floyd and John Dillinger through the roaring twenties. They were all frequent visitors here, with friends scattered around. The big difference between the old days and now seems to be that today we don't know for sure who to look out for, but the old outlaws let you know. I do think the old saying "there's honor among thieves" doesn't exist any longer.

When I mentioned the time in 1996 that the Mound City State Theater was the location that the Discovery Channel came and filmed a portion of their three part series of "Outlaws and Lawman", most of the fellows didn't know it had happened, with the exception of an actor who played the part of Dillinger. The filming here became part of "The New Breed", which was the reenactment of the killing of John Dillinger. Local persons were used in the filming as extras. The Discovery Channel had been casing the country looking for spots to do the filming - and upon seeing the State Theater in such good condition with the neon sign still intact, the location was selected. It was similar to the actual one

where Dillinger was killed coming out of in Chicago. Most theater back then were built the same, with the ticket booth in the center and doors on each side. They were originally planning to cover up the word State with a copy of the name of the real one, but decided to leave it alone. In the film this is how you can find Mound City's role, since it was dark when this all took place. I'm glad they left it.

I got a call from a local gentleman around 1:00 p.m. that day asking me to bring our 30 Model A downtown. I could either loan the car (which I wouldn't do) or dress for the period, which I wasn't interested in doing either. I would wear a white shirt and tie with a topcoat and a hat, which was furnished. I finally asked the caller if he had already committed me, and when he said yes, I went down and we started getting ready around 2:00 p.m. It was 3:00 a.m. the next morning when I got home.

Junior Yocum was restoring Doc Hunter's A Model and drove it as Dillinger's getaway car. I was an FBI agent sitting outside in the car to shoot at the actor coming out of the theater when the "Lady in Red" would point him out. Before it was all over, due to the length of time it took to film this short scene over and over, people started lining the side of the streets watching. Hardee's was here at that time and sometime after midnight they arrived with soft drinks and food for everyone, compliments of the filming crew. It sure was welcomed.

The young lady director had assigned someone to shoot a tommy gun while resting on the hood of our car. I told her no, unless she wanted to repair every one of the scratches those empty cases would put on all those thick coats of finish. I suggested that it would be her job to repair the finish. She was a good sport and moved that gun back to rest over the spare tire. By the final take the street and sidewalk were covered with those empty cases. The young actor who played Dillinger dug around in the mess and handed me an empty, telling me he was sure it was the one he was shot with. I took it home for a souvenir. Other than the empty case, I only have memories of the day. I enjoyed it along with many others, and I even thanked the gentleman for calling me out to be included.

Here is a part of the group of Mound City people that were a part of it. I can remember that besides Junior and me that Steve Wright, Sheri Wright, Jim Thomas, and I think Pastor Jim and Mrs. Brown (who played the "Lady in Red") were there. I know there were more. The payment I received in turn gave to the theater. I don't know if anyone told the film crew that John Dillinger actually knew more about Mound City than some watching. Who would have thought that years after Dillinger was supposed to have been visiting here on and off that this reenactment would happen here. Maybe they knew, or did it just happen?



Photo By Megan McAdams

## Car Club donates proceeds to injured school employee

The Slo-Rollers Car Club - And the Believing Angels (a former Relay for Life Team) donated \$525 to Richard Tullis on Thursday, September 3, 2015. The money was raised at a car show held at the Atchison County Fair in Rock Port, MO. Pictured are, front row, left to right, Tom Knierim, Byron Carter, Richard Tullis and Harry Wooten; and back row, Marvin Cooper and Roger Green. Richard is a Tarkio, MO, resident and employee of Tarkio R-1 School District who was injured while mowing the school grounds in the spring. The Slo-Rollers will be hosting a car show Saturday, September 19, at Old-Fashioned Saturday Night in Rock Port and attendees are asked to bring donations (dry food items, necessities, monetary donations) for the local food pantry. The group is also planning a car show at Waubonsie State Park near Hamburg, IA, to be held in October. The Slo-Rollers Car Club has been a fixture in Atchison County since the late 1950's and is a part of the Eastern Nebraska Western Iowa Car Council.

## News from Tiffany Heights

Pastor Megen Winget provided Bible study on Monday morning, August 31, at Tiffany Heights in Mound City. The Walk and Roll winners this week were Carol Ball, one mile; Barbara Deatz, two miles; and Dolores Hawkins, one mile.

Residents again enjoyed Amanda Griffin on Monday afternoon. This time she presented a program on vegetables. Amanda enjoyed discussing growing different types of vegetables from times gone by and also some new varieties. Residents discussed canning and ways to make different types of salsa and pickled vegetables also with drying many different kinds of peppers. They tasted the mild salsa and the verde salsa along with the sweetest cherry tomatoes and heirloom tomatoes. The dragon carrots were unique. They were red on the outside, but just like a carrot on the inside. During the evening, 24 residents enjoyed attending the circus. An evening out was great enjoyment, but of course the heat was

not.

Residents enjoyed a game of bean bag on Tuesday morning. The winners of the games were Bob Justus, Dolores Hawkins and Inez VanOrman. To start the month, the residents held their monthly council meeting. This month they chose Kris Smith as the Employee of the Month. Kris is originally from Baguio City, Philippines. Kris enjoys gardening and decorating in her spare time. She has worked at Tiffany Heights for seven years.

Did you know that during the month of September, the oyster season begins and many people believe that oysters should be eaten in months that have "R" in their names. Also during the month, some interesting facts are: In 1791, the state of Maryland gave a gift to the U.S. - the 70 square mile area became the District of Columbia; in 1884 the hot dog was invented; and national days include chocolate milk shakes, cheeseburgers and mulled cider to name a

few.

Dee Ann Heck provided piano before bingo on Thursday. Bingo volunteers during the afternoon were Shirley Jackson, Jean McCall, Lucille Stull, Denise Acklin, Phyllis Heck, Debbie Friend and Gordon Robbins. The winner this week was Naomi McIntyre.

On Friday afternoon, the residents enjoyed a special treat. They had entertainment from Donna Kunkel, Randy Baker and Jeff Worth. They sang many of their favorite country songs and they also enjoyed talking about the past at Big Lake on the wharf. They did not have a group name, but decided to call themselves Chillable Red Wine. Games of choice were encouraged on Saturday afternoon.

Communion was provided by Dennis and Josh Nauman on Sunday morning. Seth Hensen conducted Sunday morning services. Afternoon services were provided by River of Hope Fellowship.

## Atchison/Holt Unit of MRTA holds meeting



**Big Lake State Park Superintendent Rusty Burge** - Was the guest speaker at the Atchison/Holt Unit of MRTA on Thursday, September 3, at the Lakeshore Grill at Big Lake, MO.

The Atchison/Holt Unit of MRTA (Missouri Retired Teachers and Public School Personnel) met on Thursday, September 3, at the Lakeshore Grill at Big Lake, MO.

Members were pleased that Superintendents Ken Eaton from Mound City and Mike Leach from Craig, MO, were able to attend the meeting and share some information about their schools and learn more about MRTA.

Rusty Burge, Big Lake State Park Superintendent, presented the program about the history, repairs and redevelopment of the

park since the flood of 2011.

The MRTA state meeting will be Wednesday and Thursday, September 16-17, in Jefferson City, MO. Rana Killingsworth will be the Atchison/Holt Unit's representative.

The Region 1 MRTA meeting will be Monday, October 19, in Chillicothe, MO. All MRTA members are encouraged to attend.

Unit President, Anita Sutter, reminded members of the opportunities to meet informally at the Holt County Autumn Festival in Oregon, MO, on Thursday to Saturday, September 10-12, the Wine Fest in Mound City on Saturday, September 19, the Me Market in Tarkio, MO, on Saturday, November 7, and Christmas Around the Square in December in Oregon.

Food pantry items were donated for the Mound City food pantry.

The next meeting of Atchison/Holt MRTA will be Thursday, November 5, at the Lyceum in Brownville, NE, with a tour of the Bed and Breakfast.

MRTA Mission Statement; The Missouri Retired Teachers' Association and Public School Personnel organized in 1960 is the only educational organization in Missouri working

exclusively for retired school personnel. MRTA will work actively with government and its entities for beneficial legislation. It shall strive to increase membership until all retirees become members, and always foster good fellowship. The organization will encourage members to be involved in community affairs and work for worthy educational causes. Its mission is to serve and not to be served.

MRTA Vision Statement: The Missouri Retired Teachers' Association and Public School Personnel is a caring, active and knowledgeable community. Members give their talents and time to support retired and active public school employees. Members strive to uphold and improve the integrity, value, and mission of public schools, so that all school personnel may live healthy, vital lives and be secure economically, socially and professionally in retirement.

### Chamberlain Funeral Home & Monuments

1705 Ridge Drive  
Mound City, MO  
442-5300

Mound City NEWS  
Published and Printed in Mound City, Missouri

Established 1879  
(USPS 364-920)

Published weekly on Thursdays and entered as periodical publication at the Post Office in Mound City, Missouri 64470.

POSTMASTER - Send changes of address to:  
Mound City News, PO Box 175 • Mound City, MO 64470

511 State Street, PO Box 175 • Mound City, MO 64470  
(660) 442-5423 • Fax (660) 442-5423  
E-mail: moundcitynews@socket.net www.moundcitynews.com

Adam Johnson  
Owner/Publisher

Jessica Lindsay, Office Manager - Pam Kent, Advertising  
Sheri Wright, Reporter/Photographer

Jennifer Pardue, Shelly Portman,  
Pete Webster, Will Johnson, Print Shop



Member  
Missouri Press  
Association

SUBSCRIPTION INFORMATION  
\$33 PER YEAR

Holt, Nodaway, Andrew, and Atchison Counties.

\$38 PER YEAR

Elsewhere In Missouri and All Other States.

All Subscriptions Are Due In January

Copies available each week at our office and at:  
Craig Country Store, Craig;  
Lakeshore Grill, Prop-In, Big Lake;  
Country Corner and Price's Grocery, Oregon;  
Poor Boys Kwik Stop, Maitland;  
Mound City Thriftway, Kwik Zone, George's Total,  
& I-29 Travel Plaza in Mound City.



## Pocket Rx

**Start refilling your prescriptions the fast and secure way using your iPhone or Android device.**

Search the iTunes Store or Android market for Rogers Pharmacy!

## Rogers Pharmacy

607 State Street • Mound City, MO  
660-442-3355 • Toll Free 800-962-0096

Visit us online at [www.rogersrx.com](http://www.rogersrx.com)



OBITUARIES

**Vivian J. "Viv" (Karsten) Dutcher**

Vivian J. "Viv" (Karsten) Dutcher, 67, St. Joseph, MO, passed away Sunday, September 6, 2015, at Mosaic Life Care in St. Joseph. She was born October 9, 1947, in Mound City.



Vivian married Paul Douglas Dutcher September 17, 1970. She worked at the Pentagon for 12 years and later for Social Security.

Vivian enjoyed traveling, going to the boat and spending time with her friends and family.

Vivian was preceded in death by her husband; grandson, Jacob Beaderstadt; and father, Clarence Karsten.

Survivors include Vivian's daughter, Heather Dutcher, Kissimmee, FL; granddaughter, Lacey Jessogne (Dale), Kissimmee; sister, Rita Howard, Austin, TX; mother, Leta Karsten, St. Joseph; and two nephews, Brian and Matthew Howard.

Graveside farewell services and interment were held at 10:00 a.m. on Wednesday, September 9, at Memorial Park Cemetery in St. Joseph. In lieu of flowers, the family requests memorial contributions be made to the American Lung Association. An online guest book and obituary are available at [www.meierhoffer.com](http://www.meierhoffer.com).

**James E. Raney, Jr.**

James E. Raney, Jr., left this world on Saturday, August 29, 2015, to go to soar with the eagles.

**Jennifer Janelle Jumps**

Jennifer Janelle Jumps, 48, of Mound City, MO, passed away Wednesday, September 2, 2015, at Mosaic Life Care in St. Joseph, MO, after a courageous battle with breast cancer. She was born March 30, 1967, in Faucett, MO. She married Ron Jumps February 14, 1992, and they shared 25 years together.



Jen graduated from Mid-Buchanan high school and Baker University. She worked at American Family Insurance as a Regional Manager of the Personal Lines division. She loved Sunday family gatherings, watching the Kansas City Chiefs, cooking dinners for her family and her dog Dexter. Jen enjoyed golf, tractor and truck pulls, and she was a Christian.

Jen is survived by her husband, Ron Jumps of the home; father, Ed Mears of Faucett; mother, Norma Sill of St. Joseph; three sons, Jordan Landis (Kristi England) of Wathena, KS, Levi Landis (Helena Hagedorn) of Lenexa, KS, and Miles Jumps of Mound City; three grandchildren, Jace Landis, and Tony and Alex Franco; and a brother, Brian Mears of St. Joseph; as well as numerous nieces, nephews, aunts, uncles and cousins that were very dear to her. The family will receive friends from 6-8 p.m., Friday September 11, at the Rupp Funeral Home in St. Joseph. There will be a private family service at 2:00 p.m., Saturday, September 12, at the Mound City Golf Course with a celebration of her life to follow at The Klub in Mound City. Jen will be cremated under the direction of the Rupp Funeral Home. Memorials are requested in lieu of flowers to the Mound City Golf Course or the Holt County Cancer Fund. Online condolences and the obituary can be found at [www.ruppfuneral.com](http://www.ruppfuneral.com).

**Shiloh 4-H Club invites prospective members**

The Shiloh 4-H Club of Mound City will meet Sunday, September 13, at the Mound City United Methodist Church, at 3 p.m. Current members are asked to bring a friend to see what 4-H is all about. Any student from ages 5-18 years of age are invited to join. If you have questions, please contact Jennifer Heck at 660-442-5209.

**4th District American Legion to meet**

The 4th District American Legion will meet Sunday, September 13, 2015, at 1:30 p.m. It will be at the National Military Heritage Museum at 701 Messanie Street in St. Joseph, MO.

**The Compassionate Friends starts chapter in Falls City, NE**

The Compassionate Friends now has a chapter in Falls City, NE. The Compassionate Friends (TCF) is a national nonprofit, self-help support organization, offering friendship, understanding, and hope to families grieving the death of a child of any age, from any cause. There is no religious affiliation and no individual membership fees or dues are charged. All bereaved family members are welcome to attend The Compassionate Friends of Southeast Nebraska meetings. The next meeting is Monday, September 14, at 6:30 p.m., at the Falls City Public Library at 1400 Stone Street.

The mission of The Compassionate Friends: *When a child dies, at any age, the family suffers intense pain and may feel hopeless and isolated. The Compassionate Friends provides highly personal comfort, hope, and support to every family experiencing the death of a son or a daughter, a brother or a sister, or a grandchild, and helps others better assist the grieving family.*

The Compassionate Friends was established based upon seven principles:

- TCF offers friendship, understanding, and hope

to bereaved parents, siblings and grandparents.

- TCF believes that bereaved parents, siblings, and grandparents can help each other toward a positive resolution of grief.
- TCF reaches out across society's barriers to all bereaved parents, siblings, and grandparents.
- TCF understands that every member has individual needs and rights.
- TCF reaches out to the bereaved primarily through the community of local chapters and secondarily by website, social media, and conferences.
- TCF chapters belong to their members.
- TCF is coordinated nationally in its support to its chapters, bereaved parents, siblings, and grandparents.

The vision statement of The Compassionate Friends is, "Everyone who needs us will find us and everyone who finds us will be helped."

For more information about the Falls City meetings, contact Sally Merz at 402-245-0483 or visit the group's Facebook page, The Compassionate Friends - TCF of Southeast Nebraska.

**Notes from the Mound City Nutrition Site**

Volunteers at the Nutrition Site in Mound City during the week of August 31-September 4 were: Kim Kling, Barb Rather, Beverly and Gene Miller, Peggy Johnson, Betty Russell, Bill Golden, Hailey Markt, Sarah Dudeck, Mari Ferguson, Judy and Mason McIntire, Hank Just, Ashley Hunziger, Emma Ezzell, Corey Gordon, Marla Riley, Cindy Heck, Juanita Brickley and Dennis and Nancy Athen.

Delivering meals the week of September 14-18, 2015, will be:

**Craig** - Gloria Schmidt.  
**Mound City** - Monday - Jan Heck; Tuesday - Joe Laukemper; Wednesday - Dee Ann Heck; Thursday and Friday - Greg Biermann.

**Oregon and Forest City** - Monday through Friday - Faith Fellowship Church.

The Mound City Nutrition Site recycles cell phones, ink cartridges and aluminum cans for cancer (Helping Hands) in two purple cans by the front and back doors. There are also drop boxes for box tops for the school and donations to the food pantry as well as pop tabs for the Ronald McDonald House. The site is always in need of grocery sacks.

The Mound City Nutrition Site holds a "Birthday Day" every third Wednesday of each

month. This month's birthday will be held on Wednesday, Sept. 16. Twenty-five guests and staff members enjoyed bingo on Wednesday, Sept. 2. The September product of the month is sugar (white, brown or powdered).

The upcoming menu at the site is:

**Monday, September 14** - Sausage gravy, biscuits, hash browns, juice and fruit cocktail.

**Tuesday, September 15** - Swiss steak, baked potatoes, spinach, peach cobbler and bread and butter.

**Wednesday, September 16** - Happy Birthday! Beef and noodles, potatoes and gravy, green beans, hot rolls and ice cream and cake.

**Thursday, September 17** - Chicken salad, lemon vegetables, 3-bean salad and fruit cocktail.

**Friday, September 18** - Chicken tenders, corn, pickled beets and pineapple.

**William White Chapter of DAR meets for luncheon**

The William White Chapter of the National Society of the Daughters of the American Revolution (DAR) meeting was called to order by Regent Janet Watkins at a luncheon meeting at the United Methodist Church in Mound City, on Tuesday, September 1, 2015.

Regent Watkins gave the program, reading an article titled "An Overview of the Constitution." The Constitution is a body of laws written in order to maintain order and justice.

Regent Watkins conducted the meeting, leading the group in the Pledge of Allegiance to the United States of America and singing the National Anthem.

After lunch the DAR Ritual was recited including the American's Creed, Preamble of Allegiance to the State of Missouri and Preamble to the Constitution of the United States of America, followed by devotions on the making of the Missouri flag and the meaning of the symbols on the flag, given by Chaplain Faire Schoonover. Regent Watkins read the President General's Message, which stated that October 11, 2015,

will be the 125th anniversary of the founding of DAR. Committee chairs presented their reports. The minutes and treasurer's reports were approved.

Reservation slips were handed out to sign up for the MSS-DAR Northwest District Meeting to be held at the United Methodist Church in King City, MO, on Wednesday, September 16, 2015, from 9 a.m. to 2:30 p.m. Reservations should be made by September 9. Regent Watkins then concluded the meeting.

**GEAR UP 4<sup>th</sup> Savings made EEE...z**

**\$4,000 OFF\***  
SE Series Tractors  
3 Cylinder - Open Station  
OR  
0% for 60 months  
AND \$2,250 implement bonus\*

**\$2,750 OFF\***  
3E Series Tractors  
OR  
0% for 60 months  
AND \$2,200 implement bonus\*

**\$1,250 OFF\***  
1023E Tractor  
OR  
0% for 60 months  
AND \$750 implement bonus\*

No matter the size of your operation, from the garden to the ranch, the John Deere E Series puts plenty of value in your workday. And you can save on implements, too, including more than 600 implements from Frontier that will help turn your tractor into the workhorse it was built to be. Don't wait to save big. Call or come in today.

JohnDeere.com/Ag

**Hiawatha IMPLEMENT**

1410 STATE STREET  
MOUND CITY, MO 64470  
660-442-3814

\*Offer valid on purchases made between 8/5/2015 and 10/30/2015. Subject to approved installment credit with John Deere Financial. Fixed Rate of 0.0% for 60 months. \$2,250 OFF implement bonus on 3 cylinder SE Open Station Tractors, \$2,200 OFF implement bonus on 1023E Tractor. In addition to Low Rate Financing requires the purchase of 2 or more qualifying John Deere or Frontier implements. In lieu of financing offer, get \$400 OFF on 3 cylinder SE Open Station Tractors, \$2,200 OFF on 1023E Tractor, and \$750 OFF on 1023E Tractor. Some restrictions apply. Other special rates and terms may be available. To see your dealer for details and other financing options. Valid only at participating US dealers.

**6<sup>th</sup> Annual Missouri's GREAT Northwest Winefest 2015**

**Saturday September 19**  
**12 noon to 8 pm**

**Mound City North Griffith Park**  
East Weightman Rd & North Nebraska St

View the beautiful Vineyards of Mound City Development Corp

Wine Tasting presented by Missouri Winegrape Distributors

Local Artisans Grape Stomping Entertainment Food Booths Bar ~ Fun  
Only \$20 per person (Wine glass included)  
Non Wine Tasters \$10 per person

**www.NWMEF.com**

A benefit for Northwest Missouri Enterprise Facilitation... a free confidential service in Northwest Missouri helping businesses thrive through entrepreneurship, creativity and innovations by generating economic vitality and self-achievement making for healthier communities.

Marilyn Alldredge  
Winefest Coordinator  
660-744-3146  
msrva@embarqmail.com

**Your Full-Service Memorialist Since 1935**

- Monuments
- Markers
- Mausoleums
- Plaques
- Lettering
- Cleaning
- Custom Designing

**Van Vickle Monuments**

1717 Frederick  
St. Joseph  
Toll Free  
1-877-232-5882



# Area Church Information

### BIG LAKE

**Big Lake Baptist Church**

213 Lake Shore Dr., Craig, MO  
*Dick Lionberger, Interim Pastor*  
 Sunday School, 9:30 a.m., Worship Service, 10:30 a.m.

### CRAIG

**Craig Presbyterian Church**

Worship Service, 9:15 a.m. - *Cliff McNair, Pastor*

**Craig Community Church of the Nazarene**

105 S. Ensworth Street • *Keith Knaak, Pastor*  
 Sunday School, 10 a.m., Worship Service, 11 a.m.  
 Wed. Night Bible Study, 5:30 p.m., Wed. Kingdom Kids, 3:30-5:00 p.m.,  
 Wed. Night Youth Group, 6:30-8:00 p.m.

**Church of God**

Sunday School, 10:00 a.m., Worship, 11:00 a.m.

### FILLMORE

**The Lighthouse**

South I-29, Exit 65 • *Pastors Tim and Faith Uzzle*  
 Sunday Worship: 10:00 a.m., Children's Sermon 10:30 a.m.  
 For more info.: 816-564-8234 • www.fillmorelighthousechurch.org

### GRAHAM

**Graham Union Church**

Sunday School, 9:30 a.m., Morning Worship, 10:30 a.m.  
*Randy Grimm, Pastor*

**United Methodist Church**

*Connie Ury, Pastor*  
 Sunday School, 10:15 a.m., Worship, 9 a.m.

### MAITLAND

**First Christian Church**

4th and Ash • *Bill Gazaaway, Pastor*  
 Sunday School, 9:15 a.m., Worship Service, 10 a.m.  
 Sunday Night Worship, 7 p.m., Wed., Youth Rallies, 7 p.m.

**United Methodist Church**

217 S. Maple Avenue • *Connie Ury, Pastor*  
 Worship Service, 10:15 a.m.

### MOUND CITY

**Christian Fellowship**

18080 Hwy. 59 • *Jim Brown, Minister*  
 Sunday School, 9:30 a.m., Worship, 10:30 a.m.

**Holy Trinity Lutheran Church**

1413 Nebraska St. • *Rev. Brian Lemcke*  
 Worship Service, 10:30 a.m.  
 Bible Class or Sunday School, 9:15 a.m.

**First Christian Church**

402 E. 5th Street • *Paul Grant, Pastor*  
 Sunday School, 9:30 a.m., Worship, 10:30 a.m.  
 Wednesdays- Bible Study, 12 p.m.  
 www.firstchristianmoundcity.org

**Mound City Baptist Church**

1308 Savannah Street • *Pastor Nathan Lowe*  
 Worship Service - 9:30 a.m.  
 Breakfast Refreshments & Sunday School - 10:30 a.m.

**Mound City United Methodist Church**

312 E. 7th St. • *Pastor Megan Winget*  
 Sunday School, 9 a.m., Sunday Service, 10 a.m.

**New Liberty Baptist Church**

*The little church with a big heart.*  
*Will Haer, Interim Pastor* • *County Road 140*  
 Sunday School, 9:45 a.m., Worship, 10:30 a.m.  
 816-596-1152 • 660-683-5692

**New Life Apostolic Assembly**

U.P.C.I. - 307 E. 6th, Mound City • *Pastor Scott Jordan*  
 Worship Service, 11 a.m.  
 Life Night Bible Study & Revolution Youth Group  
 Thursdays, 6:30 p.m.  
 www.newlifeupci.org • 660-442-3441

**Benton Church**

An 1880s Church in the 21st Century • *Pastor Jim Broker*  
 1/2 mile south of Squaw Creek Truck Plaza on Hwy. BB  
 Worship Service at 10:00 a.m., First Sunday of Month  
 For information, call Pastor Jim Broker at 660-442-5405.

### OREGON

**St. Patrick's Catholic Church**

303 Grand, Forest City • *Father Peter Ullrich, OSB*  
 Pastor and Parish Administrator

**Faith Fellowship Church**

27772 Hwy. 59, Oregon • *Minister Dan Cravatt*  
 Sunday School - 9:30 a.m. Worship - 10:30 a.m.  
 Area Youth Group - Wednesdays - 5:00 p.m.  
 660-446-2031

**Oregon United Methodist Church**

100 E. Missouri St., Oregon • *Megan Winget, Pastor*  
 Sunday School, 10 a.m., Worship Service, 11 a.m.

**New Point Christian Church**

24135 Stone Hill Rd. • *Brian Buck, Minister*  
 Sunday School, 9:30 a.m., Worship, 10:30 a.m.  
 Fellowship Dinner, 4th Sunday of month following church

### FOREST CITY

**Forest City United Methodist Church**

103 N. Walnut St., Forest City • *Pastor Megan Winget*  
 Worship Service, 10 a.m.

### REGIONAL

**River of Hope Fellowship**

Hwy. 159 & I-29, Mound City  
 Pastor David Showalter - 660-442-6305 • Pastor Will Certain - 816-824-8566  
 Sunday School, 9:15 a.m., Worship, 10:30 a.m.  
 Youth Group Every Sunday - 6-8 p.m.



## Ella Trauernicht to be honored at 90th birthday party

The family of Ella Marie Trauernicht would like to invite all friends and family to come and help Ella celebrate her 90th birthday on Tuesday, September 15, at Paula's Cafe in Craig, MO, from 2-4 p.m.

Come join Ella for some refreshments and visit about the good old times.

Cards may be sent to Ella at 15416 Highway 111, Craig, MO 64437.

## Northwest Missouri horticulture: weather observations

Since 2007, Tim Baker has been a CoCoRaHS observer in Gallatin, MO. CoCoRaHS is short for the Community Collaborative Rain, Hail and Snow Network. It is open to anyone who has an interest in measuring precipitation, and reporting it to the CoCoRaHS web site every morning.

In those years since 2007, Baker has seen everything from excessive rainfall (15.85 inches above normal in 2009) to excessive drought (12.73 inches below normal in 2012).

In Gallatin, 2008-2010 saw above normal precipitation for each year. In 2011, the area started seeing below normal precipitation every year. The 2012 drought was certainly one to remember. It lingered well into 2013, and while the area was out of drought conditions by the end of May 2013, the drought re-emerged across northwest Missouri less than two months later in July 2013. Both years after 2012 saw below normal precipitation: -2.09 in 2013 and -3.45 in 2014.

2015 may see a reversal of that trend, since May and July had excessive rainfall. For May, Baker measured 8.93 inches in Gallatin, which was 3.63 inches above normal. July saw a total of 7.41 inches, which put that area 2.88 inches over normal. Ironically, June was short 0.88 inches, compared to normal, at least in Gallatin.

There is no telling what the rest of 2015 will do. January through April was below normal every month in Gallatin.

For those who might want to see the details of these observations, Baker has added a "Climate and Meteorology" page to his web site. Included are his precipitation, snowfall, and evapotranspiration records for Gallatin. Baker's web page can be found at: <http://extension.missouri.edu/nwhort/home.aspx>. Keep in mind that these records are only for Gallatin, and other locations will vary.

While it is interesting to look at the rainfall records for the year as a whole, if growing crops one might wonder what the patterns look like during the growing season.

Individual months can be looked at, but Baker likes to look at the water balance chart. This chart compares evapotranspiration (the moisture that is being lost to the atmosphere) versus precipitation (what comes down in the form of rain, snow, ice, etc.). Baker takes daily evapotranspiration measurements every year from May through October. He started this last year and has left last year's water balance chart on his web site, and it clearly shows that balance throughout the summer. Rain occurred at the right time in 2014, for the most part; however, the chart for 2015 is clearly on the surplus side.

If interested in becoming a CoCoRaHS observer, please feel free to contact Baker. It requires a computer and web connection so that data can be reported each day. You also must have an official CoCoRaHS four inch gauge which measures up to 11 inches of precipitation. There are many places in the Northwest Extension Region where actively-reporting CoCoRaHS observers are sparse. The University of Missouri Extension would be happy to welcome more folks to this program.

## Holy Trinity Lutheran to host 5th Annual 9/11 Remembrance Service

The 5th Annual 9/11 Remembrance Service will be held on Sunday, September 13, at 10:30 a.m. at Griffith Park in Mound City. The worship service will be conducted by Pastor Brian Lemcke of the Holy Trinity Lutheran Church, the sponsor of the event.

A free meal will be provided for all who attend the services with games following the meal (weather permitting). A bounce house, piñata and ladder golf will be offered for fun.

Please bring a non-perishable food item for the local Food Pantry. Cash proceeds from the morning's offering will be given to the local Food Pantry.

## Farmer cooperators needed

University of Missouri (MU) Extension is seeking local growers to establish test plots this fall. These plots will be replicated strip tests using grower's equipment and harvested using yield monitors to record yield data. The first trials will be planting cover crops with other trials such as phosphorus fertilization following. Cover crop trials are especially important to protect water quality and find suitable practices to protect it.

If interested in participating, please call Wayne Flanary, Regional Agronomist, MU Extension, at 660-446-3724. The extension wants to determine if all parties can work together to accommodate the needs of the experiments and fit the interest and needs of growers.

## Pocket sports schedules now available

The pocket sports schedules for Mound City R-2/Craig R-3 and Nodaway-Holt R-7 are now available and may be picked up from each school. The Mound City/Craig schedules are also available at the Mound City News office.

Schedules include: junior high, junior varsity and varsity football; junior high, junior varsity and varsity volleyball; junior high and high school basketball; and cross country competitions.

This year, Nodaway Valley Bank sponsored Mound City R-2/Craig R-3, and Nodaway-Holt R-7 sponsored its high school.

## Missouri Tax Amnesty offered for three months

As authorized by House Bill 384, Missouri will offer a tax amnesty from Tuesday, Sept. 1, 2015, to Monday, Nov. 30, 2015. The tax amnesty provides individuals and businesses with a one-time opportunity to pay back taxes that were due prior to Dec. 31, 2014, without having to pay interest or penalties.

"Missouri Tax Amnesty provides taxpayers with a three-month window to pay their debt without having to pay the interest and penalties they would owe under normal circumstances," said Revenue Department Director Nia Ray. "I encourage individuals and businesses that qualify for tax amnesty to take advantage of this opportunity."

Tax types that are amnesty eligible include individual income tax, corporate income tax, corporate franchise tax, employer withholding tax, sales tax, consumer's use tax, vendor's use tax and fiduciary tax.

The program requires taxpayers to stay in compliance with all state tax laws for eight years after signing the agreement. Taxpayers who are the subject of any civil or criminal state tax-related investigations or litigation cannot participate in amnesty.

The Missouri Department of Revenue will mail tax amnesty notices to delinquent taxpayers and businesses in late-August. The mailings include information such as the amounts owed and the amount the taxpayer will save in interest and penalties. For more information about the tax amnesty and to obtain an application online, visit [dor.mo.gov](http://dor.mo.gov) or call 573-751-7200.

Catfish **FISH FRY** *Carp* Saturday, Sept. 12 4-8 p.m. **OPEN** Tuesday & Thursday Evenings, 4-8 p.m.

at **Paula's CAFE**

**DAILY LUNCH SPECIALS**  
 Open Monday-Friday: 10 a.m.-2 p.m.  
 119 Main St., Craig, MO • 660-442-6103

**NOW SERVING BREAKFAST**  
**MONDAY-FRIDAY: 6-10 A.M.**

- Agricultural
- Residential
- Garages
- Shops & Storage
- Commercial

Thanks to all of our many customers we have become one of the area's leaders in post frame construction. Utilizing 30 plus years in the building business. King City Lumber has the capability to construct almost any size building to fit your needs. Regardless of its use, King City Lumber assures a well designed, quality, long-lasting building.

**Friendly Service & Locally Owned!!!**

**KING CITY LUMBER CO.**  
Since 1909

209 East Putnam  
 King City, MO  
 (660) 535-4337  
 Fax (660) 535-6215  
[www.kingcitylumber.com](http://www.kingcitylumber.com)



# State Theater Arts Council announces 2015-2016 schedule



The State Theater in Mound City, Mo., will launch its 2015-2016 performance season on Saturday, Oct. 24, and the selection of shows promises to be entertaining.

"We listened to what the public wanted and are excited about what is coming to the stage this year," State Theater board president, Mari Ferguson, said. "Kicking the season off with the talent show is an entertaining start to a fantastic year."

Please find a detailed schedule below:

## Saturday, Oct. 24, 2015: "A Night at the Movies" Community Talent Show

A variety of talent from Mound City and surrounding areas will be featured in a show based on music from the movies. Singing, dancing and other surprises are in store as guests take a seat in the theater to be entertained. Directed by Susan Miller.

## Saturday, Dec. 5, 2015: Christmas on State Street

Downtown Mound City will once again be transformed into a Winter Wonderland. Local businesses will showcase their artistic talents by having window displays designed by each business.

There will also be a Children's Christmas Show featuring storyteller, Will Stuck. Mr. and Mrs. Claus will make a visit following the performance. This will be a free event at the State Theater.

Caroling, carriage rides and many more family fun activities will be going on before and after the Mayor's Tree Lighting Ceremony.

## Saturday, Dec. 12: The Browns (Dolores Ideker Memorial Christmas Show)

It is truly a family affair when the Browns hit the stage with their gospel music. Their musical styling exudes excitement on the

stage and offers a life-changing experience to all who hear them. The Browns deliver the powerful message of the gospel through word and song that engage audiences of all ages.

## Sunday, December 13, 2015: A Christmas Tour of Homes

The much anticipated bi-annual Christmas Tour of Homes is back this year. Multiple homes will be on the tour, with each house decked out in its Christmas finery and boasting a special theme.

## Sunday, February 14, 2016: The Sons of the Pioneers

For over 75 years, the Sons of the Pioneers have been proud to perform the music of the American West celebrating the West, its awesome landscape, its people, its culture and the American Cowboy. They embrace that heritage and strive to honor it. Their songs are unabashed love songs to the West.

## Sunday, April 10, 2016: Jeremiah Johnson Band

Jeremiah Johnson, a native of St. Louis, Mo., and his bandmates, Jeff Girardier, Jim Rosse, Stuart Williams and Brad Williams, are back by popular demand. The band members are award-winning blues musicians; Johnson was the first-place finalist in the Houston (Texas) Regional Blues Challenges in 2004, 2005 and 2006, and the band won the 2011 St. Louis Blues Society Challenge.

The band also brings a collection of blues memorabilia, which will be on display

before and after the 7 p.m. show.

## Saturday, April 30, 2016: Duck Stamp Art Show

This art show displays a sampling of the stamp drawings submitted for a statewide competition as well as the winning stamp drawing.

## Sunday, May 8, 2016: The KC Allstars

This group has been voted best band in Kansas City four years running. Members perform a wide assortment of music for people of all ages.

## Summer, 2016: Youth Theater Camp

This camp is offered to kids ages 8-18 who are interested in theater. The camp will run two weeks and the students will have a performance at the end of camp to showcase their talent.

Individual tickets for the shows listed above cost \$15 for adults and \$5 for children 18 years old and under. Season tickets are \$75. Tickets may be purchased at the door the day of a performance or by calling (660) 442-5909. For more information, visit [www.statetheater.org](http://www.statetheater.org).

The State Theater Arts Council is an all volunteer board whose main focus is preserving the historic treasure of the State Theater and making sure it continues to provide cultural opportunities for the residents of northwest Missouri and neighboring states. If anyone loves live theater, music and arts and enjoys volunteering time to make a difference in the community, then they are encouraged to become a Friend of the Theater. This is a great opportunity to put an area of expertise to use to strengthen the mission and vision of the State Theater. If interested, contact a State Theater board member or call 660-442-5909.

By Janet Hackert, Regional Nutrition and Health Education Specialist, University of Missouri

## Selling safe canned foods

Ever think about canning and selling that delicious salsa recipe? Or wonder if the jar of pickled beets sold on the counter at a favorite diner is safe? There are steps that must be taken to make sure the consumer gets a safe product.

The main concern with canned food is any microorganism that may be present in the food before preserving it. With canned produce, the most likely culprit would be Clostridium botulinum which causes botulism. It forms spores that create a deadly toxin. The perfect environment for developing a hearty crop of this microorganism is the same environment as is present in a sealed jar of food. In fact, Londa Nwadike, University of Missouri (MU)/ Kansas State University (KSU) Extension Food Safety Specialist, reports that, "only a few nanograms can cause paralysis and death." In an incident reported in the spring of 2015, one woman died and 21 others were sick with botulism,

most likely originating from improperly home-canned food served at a potluck. Therefore it is essential to destroy the microorganisms before the jar is sealed.

What process is required to safely can produce depends on what the food is and how it is prepared. MU Extension has a series of guides called *Quality for Keeps* that describes these processes for home food preservation.

When it comes to selling canned products, what is required to ensure a safe product depends on the acid and sugar levels and whether the product is refrigerated or not. In order to sell these products, the seller may need to follow some or all of a number of steps which may include producing the product in an inspected kitchen, going through a process review, keeping pH records for the process, monitoring water activity measurements, using a commercial retort for canning, monitoring refrigerator temperatures or

other steps, depending on what the product is. The person responsible for the process may have to attend Better Process Control School as well.

University of Missouri Extension has two handouts that may be helpful for someone starting up a business to sell canned goods: *Regulations for Selling Safe Canned Foods in Missouri* and *Food Labeling for Missouri Food Producers and Processors*. These can be found at <http://missourifamilies.org/foodsafety/newsletters/>.

MU Extension also has Business Development Specialists who can help with the business side of selling these items.

For more information on selling safe canned foods contact Dr. Nwadike directly at 816-482-5850 or [nwadike@missouri.edu](mailto:nwadike@missouri.edu). For more information on this or any other topic, contact Janet Hackert at 660-425-6434 or [HackertJ@missouri.edu](mailto:HackertJ@missouri.edu) or a local University of Missouri Extension office.



### Varicose Vein Treatment

**DRPC Laser & Vein Specialists**  
at Community Hospital-Fairfax, MO  
*Dr. Douglas Niemann,*  
*Radiologist & Vein Specialist*

Contact Becky Heits, Patient Coordinator,  
**660-623-9262**  
to schedule an appointment.

## This Week's History

From the *Mound City News* archives

### 50 Years Ago - 1965

• Many people thought nothing of traveling hundreds of miles every time Al Fike entertained, no matter where he was booked. Here in Holt County people only had to go a short distance to enjoy the talents of this nationally known performer. He was entertaining each night at the Autumn Festival underway at Oregon. Mr. Fike was a native of Forest City.

• It was impossible to turn on the television set without hearing previews of the many new shows, a high percentage to be in color, which would be presented by all major networks within the following weeks. A brand new one called "Tammy" would star Frank McGrath, who became famous as Charlie Wooster on the "Wagon Train" show. He was a native of Mound City. Mr. McGrath was born February 2, 1903, in Mound City. He was a stuntman in movies for 38 years before he got the popular role on Wagon Train in 1957 which made him a top star.

• Rev. Chas. H. Pool was intalled as pastor of the St. John Lutheran and St. Peter Lutheran churches at Corning and Craig in appropriate ceremonies at the Craig church.

### 25 Years Ago - 1990

• Preliminary Census Bureau figures for 1990 were released with the population of Holt County showing a 12% drop, from 6,882 to 6,032. Municipality figures were:

	1980	1990	Change
Mound City	1,447	1,260	-13
Oregon	901	935	+4
Maitland	415	338	-19
Forest City	387	380	-2
Craig	379	346	-9
Big Lake	189	170	-10
Corning	126	88	-30
Fortescue	51	46	-10
Bigelow	67	32	-52
Skidmore	437	385	-12
Graham	253	197	-22

• The 14th annual Market Square Day saw sweltering heat. There were 124 1/2 spaces rented, fewer than had been expected. The most booths they had ever had was 139.

• Over 200 crop farmers attended the Graves Memorial Field Day.

### 10 Years Ago - 2005

• Soaring gas prices spurred by Hurricane Katrina and the long Labor Day weekend shut down some gas pumps sporadically here in the last week and helped owners of one Mound City convenience store decide to close it. Pump and Snack, the gas station and convenience store across from McDonald's on State Street, would close soon. Owners Steph and Dennis Wright had been trying to sell the place for months, and decided the time was right to close.

• New Orleans looked "every bit of what it looked like on TV," said Kent Bohart, Mound City, an Air National Guard member who helped evacuate people last week. He was among military reservists from the area who had been called up to help in the aftermath of Hurricane Katrina.

• Candidates for Mound City's homecoming royalty were Kallie Schoonover, Jesse Ohlenschlen, Amanda Corbin, Garrett Burge, Sydney Heck, Jeremy Staples, Jamie Webster and Jared Yocum.

• Christian Fellowship Church had a 25th anniversary celebration.

## What do you remember?

The Holt County Historical Society is looking for answers to these questions that have been submitted by researchers.



### Cherry Dale Country School

Did anyone attend classes there? Built in 1887, it was located three miles east of Craig and classes continued there through 1947. Students who enrolled there in 1883 included: Jennie VanWormer, Eunice VanWormer, Mattie VanWormer, Almira Steele, Fannie Williams, Zetta Parrish, Ora Parrish, Letitia Miller, Annie Miller, Belle French, Janie French, Mary Barclay, Leona Barclay, Katie Engel, Henry Engel, Geo. W. Gaskill, Frankie Gaskill, Henry Crews, Elmer French and Ralph Riggie. A complete list of Holt County's country schools was compiled in 1981 by the late Erma Smith Hinkle, (1909-1994), a retired school teacher. She had gathered histories and information on 127 country schools that once held classes in the county! Mrs. Hinkle's histories, photos, and notes are located in the Holt County Historical Society's Genealogy and Research Center in Mound City.

"Heritage of the past to the present generation and to preserve for the future"  
612 State Street in Mound City  
Open Every Wednesday, 9 a.m.-3 p.m.

## THE HOLT COUNTY HISTORICAL SOCIETY

612 STATE STREET • PO Box 55 • Mound City, MO 64470

The society has a new e-mail address: [hchs1972@gmail.com](mailto:hchs1972@gmail.com)



## Soils' health and cover crops in a minute...or two

Travis Kent, USDA/Natural Resources Conservation Service  
Rock Port, MO, Field Office

Cover crop might just be a term that some have heard used loosely over the past year or two, but what is a cover crop and how can it be utilized in this area? As defined by many, a cover crop is grown for protection and enrichment of the soil. Cover crops are planted primarily to manage soil erosion, fertility, soil quality, water, weeds, pests, diseases, and wildlife in an agro ecosystem. It is just one of the many different conservation practices that can be utilized to enhance the productivity and vigor of highly valued land.

The information below has high points that could possibly interest and help in farming operations. Don't let the term "cover crop" be intimidating. Cover crops have been a tool utilized by production agriculture for decades. This was especially true before the vast amounts of herbicides available today were in use. Producers had to think outside the box on how to deal with weed and pest competition as part of an integrated pest management approach. Cover crops have been a success story for providing additional organic matter that soil might be lacking, providing grazing opportunities for livestock during the winter, and acting as a weed suppressor for those pesky annual weeds that are dealt with each spring and summer.

When thinking of cover crops, picture a soil builder. Incorporating cover crops into an existing no-till farming system will accelerate the enhancing soil structure that is taking place in the field. The vibrant root system that the cover crop sinks deep into the field builds organic matter and creates cavities for the following cash crops' root system to follow. If thinking a tilled seed bed creates an optimal condition to plant into, here's a little about how soil structure actually works. The soil and its health play a vital role in the production and overall success of the crops from year to year. Traditional thought would be that by performing tillage, the

soil is loosened and broken down creating an ideal bed for seed to soil contact allowing a successful germination rate. Producers might imagine that the loosened soil would allow water to soak in and plant roots to penetrate the previously compacted ground. That sounds great, and in most cases is often successful, but has a very taxing long-term effect on the soil. Why perform such labor intensive tillage practices with high priced implements when soils can be just as, if not more, productive by doing absolutely nothing?

Doing nothing, believe it or not, is what promotes better soil structure and productivity in crop fields. Water "soaking in" or infiltration is how water actually enters the soil and is utilized by plants. In order for this to happen, rain surface water must somehow be absorbed by the soil. Picture a soil aggregate as a sponge full of pores - some smaller and some larger in order to provide an opening for water to enter. Pore spaces are formed in the ground by the continuous penetration of plant roots, earth worms, and a host of other microbial activity. Water enters the ground through micro pores and macro pores in a downward motion assisted by gravity. With the help of gravity, water has the ability to move through the soil traveling down exclusively through pore spaces, creating a reservoir of moisture for plants to utilize as needed, but how do plants seem to still thrive when the surface seems to be dry after an extended period of no rain? That's when capillary action takes place. Essentially the water travels from a higher concentration to a lower concentration against the odds of gravity, upwards to provide moisture for the plant. If there is poor soil structure caused by deep tillage, this process will be jeopardized by fracturing pores and drastically delaying the upward flow of moisture. When thinking about great soil structure think back a couple hundred

years, when the Midwest was encompassed by native tall grass prairie. The fact that there are such highly productive soils in the Midwest today isn't just a coincidence. The soils were formed and naturally built over hundreds of years. The perennial warm season grasses that once covered the landscape had a root system that was second to none. Year after year, big blue stem, Indian grass and switch grass would fuel the ground with a fibrous root system oftentimes penetrating several meters into the ground. These grasses, together with this climate producing a steady amount of moisture to the soil and warm, but not blistering summers, the central United States was blessed with the proper environment for the formation of some of the most productive soils in the world. The continuous new plant growth year after year remained undisturbed during the tall grass prairie era, which also fueled the microorganisms in the ground that boosted and accelerated the formation of the deep mineral rich soils of today.

There are more microbes in a teaspoon of soil than there are people on earth. Let that sink in for a moment....kind of crazy right? What else is known about microorganisms and how do they help in a modern day cropping system? Organic matter that feeds and stabilizes microorganisms also provides a reservoir for water and nutrient uptake and sustainability. Soil organic matter can be composed of living microorganisms and also dead fresh crop residue left after harvest. Also, organic matter can be found in the form of humus, which is thousands of years old and resistant to decomposition. The microbes in the soil rely on continued active soil organic matter to survive and thrive. Dead plant residues and unused nutrients become food consumed by the microbes in the soil. Soil organic matter is composed of both the living and dead substances in the soil that contain carbon. This

includes bacteria, fungi, nematodes, and fresh and decomposing plants. In the traditional corn and soybean rotation upon maturity of each individual crop, the carbon the plant spent all summer absorbing during photosynthesis to manufacture its own food must then be transferred away from the dying plant to its new home. Many pounds of carbon dioxide will be released into the atmosphere as part of the natural carbon cycle. The remainder of the carbon dioxide is now anchored in the soil from the root system developed by the plant. In short, the organic matter reserve in the soil is a product of the carbon cycle. No-till allows capturing and storage of any unused nutrients not absorbed during the previous growing season. It allows the soil structure to transition back to that of its natural condition during its time of the tall grass prairie. No-till turns micro pores into macro pores and reduces the amount of rainfall runoff by capturing more of the moisture instead of it being lost and causing sheet, rill and gully erosion.

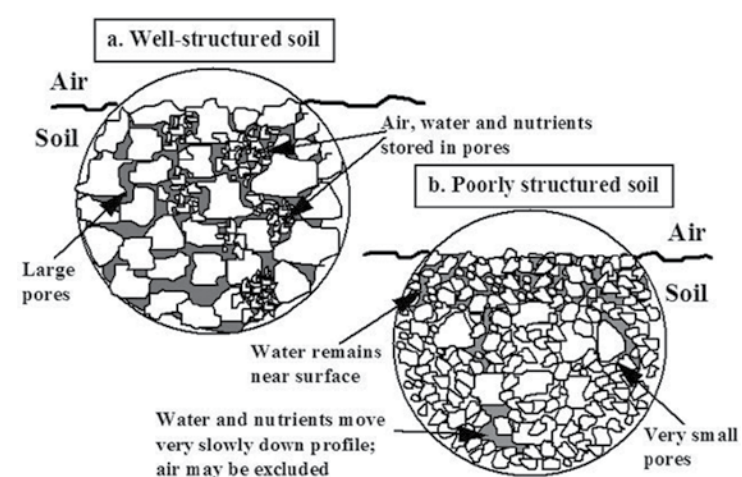
When performing tillage, carbon reserves stored in the soil are then released into the atmosphere, reducing the ability for future nutrients to be recycled and stored. Tillage causes oxidation and has a negative effect on soil health by encouraging the bacterial microbes in the soil to consume the active carbons that are the nucleus to a successful and healthy soil. When tilling, the precious microorganisms that take shelter in the ground are exposed. When brought to the surface the microorganisms release natural glues called glomalin. Glomalin plays a huge factor in holding soil aggregates together, in turn creating pore space. During tillage, glomalin is brought to the surface and causes what is referred to as "crusting" after a heavy rain followed by hot temperatures. Tillage also barriers the precious residue relied on to protect the topsoil during its most vulnerable time of year. While crops establish themselves after planting, the soils are left with nothing for protection but the previous year's residue that was left behind after harvest. This crop residue is worth its weight in gold until the current crop growing has been allowed to canopy and act as a shield toward fierce storms that are endured during the spring and early summer. These heavy rain events are where severe erosion is traditionally found in the crop fields in the form of sheet and rill or gully erosion. Think of the crops' growing season as a race, even more as a marathon. Spring tillage might temporarily warm the soil and promote growth at first, but the time that passes from April to October is not a 100-meter dash. Producers worry for months about the optimal weather needed to satisfy the crops' needs. They don't want the ground to become depleted halfway to the finish line and then just roll off the track. Picture a healthy and productive soil that has gained an edge over years of building strength and structure allowing it to take the tough blows that Mother Nature can throw it's way.

These are all problems that producers are faced with in crop production agriculture, but as a modern day ag producer, it should be the responsibility of the producer to better understand what to do and how it affects soil health and the natural ecosystem.

If I have kept you interested so far and you aren't totally confused, I hope I was successful in passing on some of the knowledge I've gathered over the past several years on our own farm and also working with many other producers in both Holt and Atchison counties. I enjoy working on our farm and I am enthused to see a transition in our soils' health as well. I am not an agronomist or a soils' health expert. There is still much more I would like to learn. I am not yet a seasoned veteran who has 30 years of hands-on experience with growing cover crops, but I AM a conservationist and I've seen just enough recently to be convinced cover crop



**Cover crop is an essential part** - Of farming that allows for the management of soil erosion, fertility, soil quality, water, weeds, pests, diseases, and wildlife. Pictured is cover crop establishing in standing corn before harvest.



**Well structured soil** - Is important for proper storage of air, water and nutrients.

and good soil structure can fix many of the problems producers face. Our farm recently transitioned into a no-till system and has implemented cover crop the past three growing seasons. I'm telling this to encourage producers to at least give it a try, but only if they are in it for the right reason. They have to believe it is going to work and put forth the effort to encourage success. If the producer is not just a little bit driven, don't waste the time. Adjustments and additional management decisions will have to be made. There will have to be planning to select a proper seeding mixture that will allow for success and for goals to be met.

As with anything in agriculture, nothing is a given. Producers rely on Mother Nature for favorable weather conditions. This year was a historically wet spring, making conditions very unfavorable to get crops planted. Many fields were left unplanted and quickly became consumed with weeds. Producers were left with the decision to spray and spend additional money on chemical to control the problem or use tillage to terminate the thriving weed population before it produced seed that would cause additional problems in future years. After all that I've mentioned above about soils' health and the effects of tillage, I'm not that naive to realize producers didn't have much of a choice this year. Tillage, shredding, and chemical treatments were all used to control the fallow fields. Often those three were used in a sequence for weed control. I understand there was no choice. Producers were given unfavorable conditions and didn't have any other option but to take care of business the best they could. We will always be faced with challenges like this but I'll keep my fingers crossed that we don't see a weather pattern like this again for a long time.

Concerns with compacted field roads caused during harvest might also be on some people's minds. Naturally, yes this is an issue. When talking about soil structure, please realize it's not hard to take a freshly baked muffin and stomp it on the ground a few times resulting in a pancake or just a handful of crumbs on the floor - not that field roads will have a muffin crumb trail scattered around the end rows; but, the point has been made...these aren't the "optimal" areas for great soil structure to develop and be maintained. Do what has to be done, whether it be a light tillage or a no-till in-line ripper that simply heaves the ground fracturing the hard pan created by heavy implements filled with grain. Oftentimes, the surface residue can

be left undisturbed allowing very little carbon to escape and allow the area to remain productive year after year. Think about the bigger picture across the whole field that can be left untampered, allowing the ground to work for the producer instead of the producer working the ground.

Did you have fields that set fallow this summer due to the wet spring? Do you have an existing no-till operation and are interested in adding cover crop to the mix? Are you a conventional tiller and interested in transitioning into no till and cover crop? If so, you might fit the bill for cost share opportunities available through the local USDA service center. The Atchison County and Holt County Soil and Water Conservation Districts currently have funds available to get your feet wet. Conservation districts are reimbursing thirty dollars per acre for a one to two species cover crop mix and forty dollars per acre for a three to four species mix. There is a \$20,000 landowner/operator lifetime cost share limit. Atchison County is offering \$5,000 per year while Holt County has not set a limit allowing the producer to max out the \$20,000 in one year if wanted. The Natural Resources Conservation Service also has potential funds available through the Environmental Quality Incentive Program that would become liquid in the summer/fall of 2016 if the application is approved. Visit with Fred Cummings and Regina Young at the Mound City service center or Caitlin Bantam and Travis Kent at the Rock Port, MO, service center who can assist you in developing a successful seed mixture that meets your goals. Some of the mixes that have been popular the last few years include species that cannot be seeded past September 15. Popular cool season grasses such as winter wheat and winter cereal rye can be seeded until November 15. This allows a producer to drill the cover crop after harvest if there has been no success with an aerial broadcast method into standing corn or soybeans.

If choosing to engage in the cost share program, there are a few simple forms that will need to be completed and a contract will be developed before the work is completed. Remember, a contract will have to be signed and active before applying the cover crop. There is so much more to talk about with soil health and the management of transitioning to no till or adding a cover crop to your rotation. If you are truly interested and BELIEVE it can work for you then swing by the office and let us help you get started!

## Corn Lawsuits Local Meetings

GET YOUR LOST INCOME BACK

JOIN US FOR A TOWN HALL MEETING IN YOUR AREA TO FIND OUT HOW WE CAN POTENTIALLY RECOVER YOUR LOSSES.

**FRIDAY, SEPT 11**  
**5:00 pm**  
**White Rose Restaurant**  
**515 State Street**  
**Mound City, Missouri**

**800-792-7866**  
**WWW.CORNFARMERSRIGHTS.COM**  
**COLVIN, CHANEY, SAENZ & RODRIGUEZ, LLP**  
**& KIRK LAW FIRM**

WE ARE PROUD TO WORK WITH THE ATTORNEYS OF WATTS GUERRA LLP, SAN ANTONIO, TX, WHO SERVE AS LEAD LITIGATION COUNSEL. THE CHOICE OF A LAWYER IS AN IMPORTANT DECISION AND SHOULD NOT BE BASED SOLELY UPON ADVERTISEMENTS.



## Mound City Police Department report

The Mound City Police Department in Mound City submitted the following civil and criminal responses for the week of August 24-30, 2015. These include:

### August 24, 2015

11:37 - Follow-up on past burglary report.  
16:43 - Follow-up on past burglary report.  
17:47 - Traffic enforcement stop for speeding.  
18:45 - Traffic enforcement stop for stop sign.  
19:38 - Follow-up on past accident report.

22:33 - Follow-up on past burglary report.

### August 25, 2015

16:43 - Nuisance complaint.

### August 26, 2015

14:45 - Business reported a shoplifter. Report taken.  
15:08 - Follow-up on prior shoplifting report.  
15:30 - Officers attended in-house training.  
17:48 - Citizen reported animal abuse. Report taken.

18:33 - Follow-up on prior shoplifting report.

### August 27, 2015

12:37 - Nuisance complaint.

12:47 - Nuisance complaint.  
14:13 - Nuisance complaint.

20:32 - Assisted citizen with directions.

### August 28, 2015

15:37 - Parking violation.  
18:38 - Traffic enforcement stop on stop sign.

18:51 - Stand-by at football game.

19:24 - Outside agency assist with Holt County and the Missouri State Highway Patrol (MSHP) for accident.

20:02 - Stand-by at football game.

00:05 - Motorist reported

careless driver on I-29 northbound. Vehicle not located.

### August 29, 2015

16:04 - Citizen requested civil stand-by. Handled by officer.

18:30 - Traffic enforcement stop on careless driving.

19:20 - Citizen reported careless driver. Handled by officer.

23:40 - Pedestrian contact and given courtesy ride home.

### August 30, 2015

20:40 - Assisted motorist with directions.

21:02 - Traffic enforcement stop on no taillights.

## Holt County real estate transfers

**Mack Stillwell and Linda K. Stillwell to John Mahaney and Stephanie Mahaney, Tabor, IA:** All of Lot 19 in Ideker Subdivision in the Village of Big Lake.

**Greg S. Nelson and Shannon C. Nelson to Johnnie Silkett and Michelle Silkett, Savannah, MO:** All of Lot 37 in Ideker Subdivision in the Village of Big Lake.

**Jeffrey L. Bullock to Travis W. Panning, Mound City, MO:** All of Lots 32, 33, 34, 35, 36, 37, 38 and 39, in Block B, in Smith's Addition in the city of Fortescue; and a tract near Block 2 in the original town of Fortescue.

**Darrell Benedict and Robin Benedict to James McCallan and Jenny McCallan, Craig, MO:** All of Lots 12, 13 and 16, in Block 2, in Gaskill & Cannon's Addition in the city of Craig.

**Bank CBO to Sheila K. Barnett, Oregon, MO:** Tracts of land in Lot 6 in Block 7 in the original town of Oregon.

**Jack Revocable Trust to Ex Parte:** All of Lot 6 in Hall's Second Addition in the Village of Big Lake.

**Timothy E. Smith to Pamela S. Smith, Fort Myers Beach, FL:** Commencing at the West Quarter corner of Section 20, Township 62 North, Range 38 West, see record for full description.

**Paul Panning and Nannette Panning to Travis Panning, Craig, MO:** A tract described as: Commencing at a point 60 feet South and 1,008 feet East of the Southwest corner of Block 2 in the original town of Fortescue, see record for full description.

**In Re: Survey for Darren Markt to Darren Markt:** A tract of land in Section 10, Township 60, Range 38.

## Holt County traffic violations

The following traffic violations that occurred in Holt County were paid through the Missouri Judiciary Fine Collection Center:

**Justin Blaine Crapo, Bellflower, MO** - Failed to Wear Protective/Approved Headgear When On Motorcycle in Motion. Case filed August 2, 2015. Case disposed September 1, 2015. Fine Amount: \$25.00.

**Timothy M. Criswell, Lafayette, IN** - Exceeded Posted Speed Limit (Exceeded By 11-15 Mph). Case filed on August 14, 2015. Case disposed on August 27, 2015. Fine Amount: \$55.50.

**Angela Faye Daniels, Kansas City, KS** - Exceeded Posted Speed Limit (Exceeded By 20-25 Mph). Case filed on June 30, 2015. Case disposed on September 1, 2015. Fine Amount: \$155.50.

**Creeth A. Hawks, Shelbina, MO** - Exceeded Posted Speed Limit (Exceeded By 11-15 Mph). Case filed on August 23, 2015. Case disposed on August 28, 2015. Fine Amount: \$55.50.

**Shashawna A. Hunter, Omaha, NE** - Exceeded Posted Speed Limit (Exceeded By 20-25 Mph). Case filed on August 2, 2015. Case disposed on August 27, 2015. Fine Amount: \$155.50.

**Jason Brandon Mick, Forest City, MO** - Exceeded Posted Speed Limit (Exceeded By 11-15 Mph). Case filed on July 9, 2015. Case disposed on August 31, 2015. Fine Amount: \$55.50.

**Jeremy M. Miller, Mound City, MO** - Littering. Case filed on July 11, 2015. Case disposed on September 2, 2015. Fine Amount: \$79.50.

**Michel Ann Odegaard, Niceville, FL** - Exceeded Posted Speed Limit (Exceeded By 20-25 Mph). Case filed on June 27, 2015. Case disposed on September 2, 2015. Fine Amount: \$155.50.

**Alexis Steven Perez, Kansas City, KS** - Exceeded Posted Speed Limit (Exceeded By 16-19 Mph). Case filed on August 16, 2015. Case disposed on August 30, 2015. Fine Amount: \$80.50.

**Jennifer L. Stawizynski, Dittmer, MO** - Failed to Wear Protective/Approved Headgear When On Motorcycle In Motion. Case filed on August 7, 2015. Case disposed on September 2, 2015. Fine Amount: \$25.00.

Direct Sales, Delivery & Trimble GPS Mapping Services

**Liles Enterprises, LLC**

Your Supplier For Quality Drainage Products

**660-920-9190**

CONVENIENT ACCESS OFF I-29, EXIT 99

31792 State Hwy. W • Fairfax, MO 64446

lilesenterprisesllc@squawcreek.net

## LEGAL NOTICES



### Notice to Bidders

The Holt County Commission is seeking sealed bids for the purchase of a voice and multimedia logging recorder system for 911. The system must be NG9-1-1 multimedia compatible in accordance with NENA document 08-003. Complete specifications shall be obtained by contacting the Holt County Clerk's Office at 102 Washington St., Oregon, MO. Submissions clearly marked "Bid" should be received by the clerk's office by 11 a.m., Monday, September 14, 2015, at which time the bids will be opened in the commissioners' room at the Holt County Courthouse. Contact the clerk's office at 660-446-3303 for more information.

9/2tc

*Kathy J. Holstine, County Clerk*

### NOTICE

To whom it may concern:  
Notice is hereby given that by an order of the Circuit Court of the County of Holt, State of Missouri, Division 1, made and entered on record on Tuesday, August 25, 2015, the name of Catherine Ashley Tudor was changed to: Catherine Ashley Tubbs.

8/31c

### Public Notice

The Corning Special Road District will hold a public monthly business meeting on September 17, 2015, from 1-2 p.m. at 16178 Holt 110 Rd, Craig, MO.

*Mike Wright, Secretary*



### Sheriff's Office Weekly Report

HOLT COUNTY SHERIFF'S OFFICE  
PO Box 229 • Oregon, Missouri 64473 • 660-446-3300

The Holt County Sheriff's Office in Oregon, MO, submitted the following civil and criminal responses from August 31-September 6, 2015. These include:

### August 31, 2015

16:01 - **Animal Control:** A deputy discovered an injured deer on Hwy. 159 in the Mound City area. The deputy put the animal down and notified conservation.

18:15 - **Motorist Assist:** A deputy assisted a stranded motorist on I-29 in the Mound City area.

18:19 - **Suspicious Circumstance:** Dispatch received a report of a suspicious circumstance on I-29 in the Mound City area. Troop H was also notified.

### September 1, 2015

08:19 - **Careless & Imprudent (C&I) Driving:** Dispatch received a report of a driver on I-29 with an unsecured load near Mound City. A deputy made contact with the driver and had him secure the load.

09:10 - **Civil Stand-By:** A deputy conducted a civil stand-by at a residence in Maitland.

### September 2, 2015

18:42 - **C&I Driver:** A deputy took a report on a C&I driver on I-29 in the Craig area.

21:16 - **Traffic Stop:** An officer performed a traffic stop in Mound City and found one of the occupants to have an active warrant for Failure To Appear from the Gower, MO,

Police Department. The male individual was booked into jail at the Holt County Sheriff's Officer (HCSO) and later bonded out with a court date.

### September 3, 2015

09:27 - **Trespassing:** A deputy took a report on trespassing at a residence in Bigelow.

16:01 - **Suspicious Circumstance:** Deputies took a report of a missing car from the Mound City School.

### September 4, 2015

13:18 - **Assist Mound City Police:** Deputies assisted Mound City police with traffic control during the homecoming parade.

15:52 - **Motorist Assist:** A deputy assisted a stranded motorist on I-29 in the Mound City area.

### September 5, 2015

12:17 - **Roadway Obstruction:** A deputy responded to a report of a roadway obstruction on I-29 in the Mound City area. The deputy removed the debris from the roadway and advised the Missouri Department of Transportation (MoDOT) of the incident.

18:36 - **Fire/Smoke:** A deputy assisted Craig Rural Fire Department (CRFD) on a report of a porta-potty on fire in Craig. CRFD extinguished the fire.

### September 6, 2015

16:32 - **Prisoner Booking/Release:** A male inmate was released from a 48-hour commitment and held on a warrant hit from Andrew County for failure to appear.

19:58 - **Disturbance Fight:** Deputies responded to a report of a fight at an Oregon area residence. One subject was injured and taken to the hospital.

21:58 - **Domestic Disturbance:** Deputies took a report on a domestic disturbance at a residence in Fortescue.

Stylize Your Notepads!



Mound City  
**NEWS**



511 State Street • PO Box 175  
Mound City, MO 64470  
Mound City News Office: 660-442-5423  
Fax: 660-442-5423  
E-mail: moundcitynews@socket.net

Serving Holt County, Missouri, and the area since 1879.



We're changing our name. Because **we're changing** health care.

For over 120 years, you've known us as St. Francis Hospital and Health Services. And over the next few months, you'll come to know us as SSM Health St. Francis Hospital.

We're still the same place, with the same people and the same mission of exceptional care and compassion. But we're changing the way we provide health care to our community.

We're part of something *bigger*.

As a long-standing part of SSM Health, we're connected to a wealth of resources, expertise and advanced technology to help provide the latest in personalized care.

We're part of something *better*.

By bringing our hospital, medical group and home care services together, we're making it easier than ever to find quality care where and when you need it.

Visit [ssmhealthstfrancis.com](http://ssmhealthstfrancis.com)



©2015 SSM Health. All rights reserved. SFM-15-11754 5/15

# TROPICAL ISLAND

## 2015 MOUND CITY PANTHERS' HOMECOMING



### Panthers' 2015 Homecoming parade travels to "Tropical Island"

"We Lava the Panthers" - Was the theme of the kindergarten float from Mound City R-2 at the 2015 Homecoming parade on Friday, September 4. The teacher, Mrs. Osburn, and her 20 students danced the hula and carried torches around a volcano proclaiming "Explode the Tigers". The kindergartners won first place in the elementary float competition, entitling them to a pizza party.



**Brody Voltmer, a preschooler at Mound City R-2** - Marched with his class during the 2015 Homecoming parade on Friday, September 4. Brody was wearing his super sharp sunglasses and a Hawaiian lei. He was carrying a Worth County Tiger (lion) by the hair to show how strong the Mound City Panthers are.



**Tess Phillips, a junior at Mound City R-2** - Walked the parade route beside her class float during the 2015 Homecoming parade on Friday, September 4. Tess and other junior classmates passed out leis to the parade spectators. The junior class won the high school float competition with their float, "Lei Out The Tigers".



**The "Hula Girls"** - Performed at the community pep assembly on Friday afternoon, September 4, before the Mound City Panthers' homecoming game later that evening. Mound City R-2 high school principal, Corey Miles, had all the right moves to go along with his grass skirt and coconut "top".



## Antique Auctions - Save the Dates

October 31, November 1 and December 5, 2015

KCI Expo Center, Kansas City, Missouri

December 27, 2015 and February 16, 2016

Pleasant Valley (MO) Community Building

(additional auctions to be scheduled)

**At auction, the collections of Jim and Thelma Woolsey, Tarkio, Missouri**

Gathered over many years and lovingly maintained, the collections include art glass, cut glass, R.S. Prussia, Staffordshire, porcelains, lamps, Victorian furniture, unusual pine, copper, pewter, primitives, stoneware, pottery, toys, banks, prints, dolls, quilts, jewelry and more. Jim and Thelma sought and enjoyed the unique.

**A full listing of each sale will be posted at [www.penceauction.com](http://www.penceauction.com)**

### PENCE AUCTION

Rick Pence, Auctioneer • (816) 781-4218  
1409 Woodbury, Liberty, MO 64068

*Thelma R. Woolsey Trust - Tarkio, Missouri*



**A fantastic song and dance troupe called "The Beach Babes"** - Put on a great show at the 2015 Homecoming community pep assembly on Friday, September 4. Performing to the song, "Surf's Up" from the *Teen Beach* movie were, left to right, freshman Emma Gibson, first grade teacher Mrs. Forehand, freshman Gracie Caton, middle school teacher Mrs. Hamm, freshman Hannah Wedlock and special education teacher Mrs. Schoonover.



**The Mound City Panthers' football boys** - Had a great time at the 2015 Homecoming community pep assembly on Friday, September 4. The team split into teams of two and competed in the gummy worm race. One player had to stand above the other and drop the worms into the reclining player's mouth. The winning team won a big bag of gummy worms. The team then did the limbo dance.



**Mound City R-2 Superintendent Ken Eaton** - Put on quite a show during the "Hula Girls" dance at the community pep assembly on Friday afternoon, September 4. The other dancers wowing the crowd were teachers Lee McFaddin, Connor Dignan and Ryan Osburn and high school principal, Corey Miles.



# TROPICAL ISLAND

## 2015 MOUND CITY PANTHERS' HOMECOMING



### Panthers prepare for homecoming with bonfire, hot dogs and pep rally

**Several members of the senior class** - At Mound City R-2 pose for a picture at the 2015 Homecoming bonfire and pep rally on Thursday night, September 3, in Mound City. Pictured are, front row, left to right, Kendey Eaton, Jessica Johnson, Hillary Russell, Kenzie Ashford, Mae Sanders, Emily Wedlock; and back row, Colton Dean, Chandler Wilson, Hunter Holstine, Craig R-3 senior Kyree Howell, Tyler Miles, Jaden Gillenwater and Jaden Derr.



### Homecoming tradition continues; toilet paper nearly sold out at all local stores

**Nearly the entire female population of students** - At Mound City R-2 traveled to the homes of the Mound City Panthers' football team and coaches to "decorate" for homecoming. Several hundred rolls of toilet paper mysteriously found their way into the landscaping at the homes with a good bit of the "tp" ending up in Coach Messer's trees. This age-old tradition has evolved into a breakfast at a house of two Panthers, a tea ring at the house of another two Panthers, more goodies at another house and a sleepover and goodies at the Kim Corbin house after the escapades.



**Craig R-3 students** - Boarded a favorite mode of transportation on the waters of Big Lake (and other "tropical" places) for the 2015 Panther Homecoming parade on Friday, September 4. "Whatever Floats Your Boat" banners were on the sides of the pontoon boat and the students waved at the spectators along the parade route. Craig R-3 joined Mound City R-2's athletic program in 2014 and students are part of the Mound City Panthers.



**The Mound City R-2 marching band** - Strutted down the parade route during the 2015 Homecoming parade on Friday, September 4. The band is directed by David Reiter. The Drum Majors are Montana Kunkel, left, and Ashley Tudor, right. The marching band performs at home football games and area parades.



**Leisa Biermann of Mound City R-2** - Several years ago and substitutes when needed. On Friday, September 4, she was working in the kindergarten class as a para-professional and rode the float with the class. At the community pep assembly after the parade, Mrs. Biermann was chosen as the Grand Kahuna of the tropical islands for her great outfit. The spectators voted by applause.

Since 1946

**LAUKEMPER**  
CHRYSLER • DODGE • JEEP • RAM

Mound City, MO

69-YEAR TRADITION OF AWARD WINNING SERVICE

LABOR DAY SALES EVENT

<p><b>2015 CHRYSLER 200 LIMITED</b> UCONNECT TOUCH SCREEN BLUETOOTH 36 MPG HWY</p> <p style="text-align: center;"><b>BUY FOR \$17,900</b> OR <b>LEASE FOR AS LITTLE AS \$109</b></p> <p><small>MSRP: \$24,945 STK# 729401</small></p>	<p><b>2015 JEEP CHEROKEE LATITUDE 4x4</b> 8.4" TOUCH SCREEN BLUETOOTH HANDS FREE REAR CAMERA</p> <p style="text-align: center;"><b>BUY FOR \$24,800</b> OR <b>LEASE FOR AS LITTLE AS \$218</b></p> <p><small>MSRP: \$28,885 STK# 794567</small></p>
<p><b>2015 DODGE JOURNEY AVP</b> 3-ROW SEATING REAR AIR</p> <p style="text-align: center;"><b>BUY FOR \$17,999</b></p> <p><small>MSRP: \$23,390 STK# 746656</small></p>	<p><b>2015 JEEP GRAND CHEROKEE LAREDO 4x4</b> BLUETOOTH DUAL ZONE TEMP CONTROL 24 MPG HWY</p> <p style="text-align: center;"><b>BUY FOR \$32,000</b> OR <b>LEASE FOR AS LITTLE AS \$229</b></p> <p><small>MSRP: \$34,790 STK# 830842</small></p>
<p><b>2015 CHRYSLER 300 LIMITED AWD</b> BLIND SPOT MONITORING REMOTE START NAVIGATION BLUETOOTH</p> <p style="text-align: center;"><b>BUY FOR \$33,900</b> OR <b>LEASE FOR AS LITTLE AS \$199</b></p> <p><small>MSRP: \$39,085 STK# 756845</small></p>	<p><b>2015 RAM 1500 CREW CAB BIG HORN 4x4</b> 8.4" TOUCH SCREEN LUXURY GROUP</p> <p style="text-align: center;"><b>BUY FOR \$35,700</b> OR <b>LEASE FOR AS LITTLE AS \$199</b></p> <p><small>MSRP: \$44,865 STK# 745070</small></p>
<p><b>2015 JEEP PATRIOT LATITUDE 4x4</b> BLUETOOTH HANDS FREE REMOTE START</p> <p style="text-align: center;"><b>BUY FOR \$21,999</b> OR <b>LEASE FOR AS LITTLE AS \$175</b></p> <p><small>MSRP: \$26,085 STK# 290647</small></p>	<p><b>2015 RAM 2500 CREW CAB BIG HORN 4x4</b> BLUETOOTH LUXURY GROUP REAR CAMERA</p> <p style="text-align: center;"><b>BUY FOR \$39,000</b></p> <p><small>MSRP: \$49,180 STK# 639982</small></p>

**1011 STATE STREET  
MOUND CITY, MO 64470  
(660) 442-5438**

**VISIT US AT  
WWW.LAUKEMPERMOTORS.COM  
FOR ALL OUR LABOR DAY SALES EVENT SPECIALS**

OFFERS GOOD THROUGH 9/30/2015, ALL REBATES TO DEALER, WITH APPROVED CREDIT, RESIDENCY RESTRICTIONS MAY APPLY, PICTURES FOR ILLUSTRATIVE PURPOSES ONLY

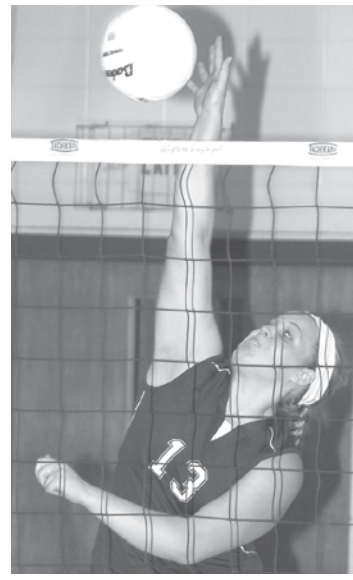




**South Holt Lady Knight Ashley Hunziger** - Bumps the volleyball over the net in the 275 Conference match with Mound City on Thursday, September 3, in Mound City. The Lady Knights fell to Mound City 11-25 and 18-25. Ashley had four hits.



**South Holt Lady Knight Ashley Hunziger (20)** - Attempts to spike the volleyball over the net during the two-game match against Mound City on Thursday, September 3, in Mound City. Lady Panthers Tess Phillips (7) and Savannah Derr (14) successfully blocked the hit. Mound City went on to win, 25-11 and 25-18.



**Mound City Lady Panther Sydney Ireland** - Stretches for the hit against South Holt in the 275 Conference volleyball game on Thursday, September 3, at Mound City. Sydney also served 12/15 with four aces.



**Mound City Lady Panther Kameron Freemyer, right** - Slams the ball over the net as South Holt's Abby Egbert, left, jumps up to try to block it. Mound City won the match in two games, 25-11 and 25-18, on Thursday, September 3, in Mound City.



**In junior varsity action** - Mound City's Hannah Wedlock (18) jumps up for the block against South Holt's Sadee Prussman (28) on Thursday, September 3, in Mound City. Mound City won the match, 25-12 and 25-22.



**ESPN was in the building** - During the Mound City vs. South Holt volleyball game on Thursday, September 3, in Mound City. The commentators posted a W-I-N-I for the Mound City Lady Panthers' varsity team after the 2-game victory over the Lady Knights, 25-11 and 25-18. The win puts Mound City's record at 7-1-1 and 1-0 in the 275 Conference. The celebrity commentators were, left to right, Riley Holstine, Ben Shifflett, Chandler Wilson and Blake Shifflett, all Mound City Panther football players showing solidarity with the volleyball team.



**Mound City Lady Panther Mae Sanders** - Bumps the volleyball during the match against the South Holt Lady Knights on Thursday, September 3, in Mound City. The Lady Panthers won the 275 Conference match in two games, 25-11 and 25-18.



**Mound City Lady Panther Hillary Russell** - Serves the ball during action at the varsity volleyball match with South Holt on Thursday, September 3, in Mound City. The Lady Panthers won the match in two games, 25-11 and 25-18.



**South Holt Lady Knight Rachel Hunziger** - Bumps the set during volleyball action at Mound City on Thursday, September 3. Rachel recorded seven assists during the match. Mound City won, 25-11 and 25-18.

## Mound City beats South Holt in 275 Conference volleyball action

The Mound City Lady Panthers hosted the South Holt Lady Knights in a 275 Conference varsity volleyball match on Thursday, September 3, in Mound City. After exchanging points at the beginning of the first game, Mound City pulled away to win the first game, 25-11. The second game had errors on both teams, with Mound City pulling out the win, 25-18. The Lady Panthers are 7-1-1 and 1-0 in

the conference. The Lady Knights are 2-2 and 0-1 in the conference. In the junior varsity varsity match, Mound City easily won the first game of the two-game match, 25-12. South Holt came out strong in the second game but fell short, losing by the score of 22-25. Mound City's junior varsity is 3-0 and South Holt's junior varsity is 1-2.

VARSITY VOLLEYBALL  
**SOUTH HOLT vs. MOUND CITY**  
Thursday, September 3, 2015 - Mound City, MO

Score	1st	2nd	3rd
South Holt	11	18	
Mound City	25	25	

**MOUND CITY (V) STATISTICS**

MOUND CITY PANTHERS (V) - 7-1-1, 1-0 Conference

PLAYER	SERVES	ACES	HITS	DIGS	ASSISTS	BLOCKS
Mae Sanders	7/9	-	2	-	-	-
Sydney Ireland	12/15	4	-	1	1	1
Tess Phillips	4/4	-	3	-	10	-
Emily Wedlock	5/7	-	9	1	-	-
Kenzie Ashford	10/10	2	-	1	-	-
Kameron Freemyer	-	-	1	-	-	-
Hillary Russell	3/5	2	-	-	-	-
Bayleigh Portman	1/1	-	-	-	1	-
Savanah Derr	-	-	1	-	-	-

JUNIOR VARSITY VOLLEYBALL  
**SOUTH HOLT vs. MOUND CITY**  
Thursday, September 3, 2015 - Mound City, MO

Score	1st	2nd	3rd
South Holt	12	22	
Mound City	25	25	

**MOUND CITY (JV) STATISTICS**

MOUND CITY PANTHERS (JV) - 3-0

PLAYER	SERVES	ACES	HITS	DIGS	ASSISTS
Bayleigh Portman	7/9	1	-	-	6
Emma Derr	4/7	1	1	-	-
Emma Gibson	-	-	2	-	-
Victoria Nauman	11/13	6	3	-	1
Paige Quilty	5/6	1	2	-	4
Hannah Wedlock	6/6	1	1	-	-
Deanna Clayton	2/4	-	-	-	-
Jocelyn Clayton	1/2	1	-	-	-
Desiree Hufford	-	-	-	1	-

**SOUTH HOLT (V) STATISTICS**

SOUTH HOLT KNIGHTS (V) - 2-2, 0-1 Conference

PLAYER	BLOCKS	ACES	HITS	DIGS	ASSISTS
Rachel Hunziger	-	1	-	-	7
Ashley Hunziger	2	-	4	1	-
Emma Ezzell	-	-	3	-	-
Hailey Markt	-	-	-	4	-
Abby Egbert	-	-	-	2	-
Madeline Prussman	1	-	-	-	-
Sarah Dudeck	-	-	-	1	-

**SOUTH HOLT (JV) STATISTICS**

SOUTH HOLT KNIGHTS (JV) - 1-2

PLAYER	BLOCKS	ACES	HITS	DIGS	ASSISTS
Olivia Richards	-	-	1	2	1
Sophie Richards	-	1	2	1	-
Kinsee Knapp	-	1	1	3	-
Madeline Prussman	-	-	2	-	-
Sadee Prussman	-	-	1	-	-

## Mid-Buchanan falls to Mound City in two

The Mound City Lady Panthers' varsity and junior varsity volleyball teams travelled to Faucett, MO, to take on the Mid-Buchanan Dragons on Tuesday, September 1. In varsity action, Mound City easily won in two games with the team making 39/43 serves. Tess Phillips recorded 11 assists and Emily Wedlock crushed 10 hits over the net. The Lady Panthers' record stands at 6-1-1.

The junior varsity team kept the fans excited with three close games, coming out with the victory, 25-21, 17-25 and 25-23. Bayleigh Portman led the Lady Panthers with 25/26 serves, four aces and 10 assists. Paige Quilty added 14/14 serves and five aces. The junior varsity team made 66/69 serves and has a record of 2-0.

VARSITY VOLLEYBALL  
**MOUND CITY vs. MID-BUCHANAN**  
Tuesday, September 1, 2015 - Faucett, MO

Score	1st	2nd	3rd
Mound City	25	25	
Mid-Buchanan	7	15	

**MOUND CITY (V) STATISTICS**

MOUND CITY PANTHERS (V) - 6-1-1

PLAYER	SERVES	ACES	HITS	DIGS	ASSISTS	BLOCKS
Mae Sanders	2/4	-	3	-	-	-
Sydney Ireland	8/10	1	5	-	1	1
Tess Phillips	12/12	1	3	2	11	1
Emily Wedlock	8/8	-	10	2	-	2
Kenzie Ashford	4/4	-	-	4	-	-
Kameron Freemyer	-	-	-	1	1	-
Hillary Russell	5/5	-	-	1	-	-
Savanah Derr	-	-	4	-	1	1
Gabrielle Heck	-	-	1	-	-	-

JUNIOR VARSITY VOLLEYBALL  
**MOUND CITY vs. MID-BUCHANAN**  
Tuesday, September 1, 2015 - Faucett, MO

Score	1st	2nd	3rd
Mound City	25	17	25
Mid-Buchanan	21	25	23

**MOUND CITY (JV) STATISTICS**

MOUND CITY PANTHERS (JV) - 2-0

PLAYER	SERVES	ACES	HITS	DIGS	ASSISTS	BLOCKS
Bayleigh Portman	25/26	4	1	-	10	-
Emma Derr	7/7	-	1	2	-	-
Victoria Nauman	7/8	2	4	4	-	1
Paige Quilty	14/14	5	3	-	1	-
Hannah Wedlock	10/10	1	5	3	-	-
Jocelyn Clayton	-	-	-	2	-	-
Desiree Hufford	3/4	1	-	-	-	-

Rock Port Telephone

midwest data center

NorthwestCell

# CUSTOMER APPRECIATION

**WHEN** *Wednesday, September 16*  
11AM - 1PM

**WHERE** *Telephone Company Warehouse*

**TELEPHONE COMPANY WAREHOUSE | 106 E OPP ST | ROCK PORT**





## Nodaway-Holt Lady Trojans claim first place at Tarkio Volleyball Tournament

The Nodaway-Holt Lady Trojans - Won the 2015 Tarkio (MO) Volleyball Tournament on Saturday, September 5. To earn the title, the Lady Trojans beat Fairfax, MO, 25-22 and 25-16; West Nodaway (Burlington Junction, MO), 25-18 and 25-17; and Tarkio, 25-20 and 25-22. The Lady Trojans also won the tournament in 2014. Pictured are, front row, left to right, Frankie Lemar, Ashley Brashears, Kennedy Sportsman, Jaylee Holmes and Jordan Long; and back row, Coach Tobie Bohannon, Amanda Bohannon, Rachel Farmer, Phoebe Gard, Colbie Carden, Breanna Day, Macie Bohannon, Maggie Fuhrman and Coach Kyle Blackford.



South Holt's Madeline Prussman (17) and Madison Grimes (22) - Set up the play against Mound City on Thursday, September 3, in Mound City. The 275 Conference match ended after two games with Mound City on top, 25-11 and 25-18.

## South Holt beats St. Joe Christian in two games

The South Holt Lady Knights played St. Joseph Christian in varsity volleyball action on Tuesday, September 1, in St. Joseph, MO. South Holt won the match with two close games, 25-22 and 25-20.

Rachel Hunziger led the Lady Knights with five ace serves and eight assists, followed by Ashley Hunziger with four unreturnable hits over the net.

### VARSITY VOLLEYBALL SOUTH HOLT vs. ST. JOE CHRISTIAN Tuesday, September 1, 2015 - St. Joseph, MO

Score	1st	2nd	3rd
South Holt	25	25	
St. Joe Christian	22	20	

### SOUTH HOLT (V) STATISTICS

SOUTH HOLT KNIGHTS (V) - 2-1					
PLAYER	BLOCKS	ACES	HITS	DIGS	ASSISTS
Rachel Hunziger	-	5	-	-	8
Ashley Hunziger	-	-	4	-	-
Abigail Egbert	1	1	-	3	1
Sadee Prussman	1	-	1	-	-
Emma Ezzell	-	1	3	-	-
Hailey Markt	-	-	1	-	1
Madeline Prussman	-	-	1	-	-
Sarah Dudeck	-	-	-	1	-

## South Holt R-1 FFA to hold annual Labor Auction

The South Holt R-1 FFA invites the public to the organization's annual Labor Auction on Friday, September 11, at 5 p.m. This year's Labor Auction will be held on the stage at the Holt County Autumn Festival in Oregon, MO. Businesses and individuals can begin registering as bidders at 4:30 p.m. The winning bidder of any lot is entitled to two hours of work from the members purchased.

Money raised from this event will be utilized to fund leadership training opportunities for the FFA students throughout the year. The South Holt FFA is committed to the advancement of its members and this would not be possible without the assistance of the community.

If there are any questions, contact FFA Advisor Jessica Aeschliman at 660-342-0495 or by email: aeschliman@southholtr1.com.



## Boy Scout Pack 71 & Troop 71 hold recruitment night

The local Boy Scout Pack 71 and Troop 71 - Held a cook-out, game night and swimming party to kick off the new scouting year on Saturday, August 29, in Mound City. The group's recently inducted Tiger Cub was able to attend this event. It was a great night of fellowship and fun. If interested in scouting, there will be another recruitment night on Wednesday, September 23, at 6 p.m. at the New Life Apostolic Church on 6th Street in Mound City. The scouts are grateful to the community for its support during the annual popcorn sale. This year the sale will begin on Saturday, September 19. The Boy Scouts will have a booth at the Great Northwest Missouri Winefest on Saturday, September 19, and will be going door to door asking for support for the local Pack and Troop through popcorn sales. If there are any questions about the scouting program, please call Shawn Berney, 816-261-2121, or Richard Foust, 660-853-8664.

## Missouri State Highway Patrol seeks applicants

The Missouri State Highway Patrol, a premiere law enforcement agency, is testing for new troopers. The Patrol is encouraging qualified individuals of all backgrounds to apply and will offer testing at nine different locations in Missouri. Initial testing will occur during the months of August, September and October, 2015. The application deadline is October 6, 2015. Those who successfully complete testing will be eligible to continue in the selection process for the 103rd Recruit Class, scheduled to begin training on July 5, 2016.

To be eligible, candidates must possess a minimum of 30 college credits, or two years of federal active duty military service with an honorable discharge, or two years of full-time Peace Officer Standards and Training Program (POST) certified experience as a law enforcement officer with arrest authority at the time recruit training begins.

The starting salary for trooper is \$3,356 per month while in training; \$3,440 per month after six months; and \$3,656 per month at two years of service. Other benefits include group health insurance, contributory retirement, career advancement and more.

The selection process is a multi-phase testing procedure including: written examination, a physical fitness for duty assessment, polygraph examination, background investigation and oral interview board. After a conditional offer of employment, the applicant must successfully complete a medical examination (to include vision and hearing), psychological examina-

tion, a psychological interview, drug screening and final applicant review.

Interested persons can find out more about the qualifications by contacting a Patrol recruiter at telephone number 1-800-796-7000, or may apply online at www.motrooper.com.

\*\* The number of successful candidates being extended an offer of employment is contingent upon factors such as budget constraints and the number of vacant positions statewide.

Don't get left in the DARK

Missed out on that big game? You wouldn't have if you had read this Sports Section. Find out all the details of all the major sporting events in our area and much, much more in the Mound City News. Subscribe now and be in the know.



SUBSCRIBE TODAY

In-area - \$33/year  
(Holt, Nodaway, Atchison, and Andrew Counties)

\$38/year (Everywhere else)

Mound City NEWS

Your hometown newspaper.

Serving Holt County, Missouri, since 1879.

511 State Street • PO Box 175  
Mound City, MO 64470

Mound City News Office: 660-442-5423

Fax: 660-442-5423

E-mail: moundcitynews@socket.net

## COUPON DAYS Thursday-Saturday, September 10, 11 & 12

Interior/Exterior  
COLOR SOLUTIONS OR  
BEST LOOK PAINT

\$10 OFF  
PER GALLON

Max. is 5 gallons.



Hours:  
Mon.-Fri.: 7:30 a.m.-5:00 p.m.  
Sat.: 7:30 a.m.-4:00 p.m.  
108 W. 7th St. • Mound City, MO  
660-442-5416



Dustin Carpenter M.D.  
Mound City Family Medicine

- Adult Medicine
- Geriatrics Including Nursing Home Care
- Pediatrics
- Obstetrics
- Preventive Care

Direct patient care at Community Hospital-Fairfax with referrals to Mosaic, Bryan Health and Nebraska Medicine.

Sliding fee scale available for those who qualify.

### FOR MORE INFORMATION

Mound City Family Medicine  
Dustin Carpenter M.D.  
Becky Heits, FNP  
514 State Street  
Mound City, Mo 64470  
(660) 442-3181



# Mound City Panthers lose homecoming matchup with Worth County Tigers

The Mound City Panthers hosted the Worth County Tigers of Grant City, MO, for homecoming on Friday, September 4, at Ceglenski Field. The tough Tigers scored first and never looked back, winning the 275 Conference game, 58-12.

Mound City's rushing game was led by Kyree Howell and Dylon Faller. The Panthers' two touchdowns were scored from received passes to Jaden Gillenwater and Matthew Poppa. The defense was led by Blake Shifflett, Riley Holstine and Matthew Poppa.

VARSIY FOOTBALL

**WORTH COUNTY vs. MOUND CITY**

Friday, September 4, 2015 - Mound City, MO

Scoring	1st	2nd	3rd	4th	Final
<b>Worth County</b>	<b>22</b>	<b>14</b>	<b>22</b>		<b>58</b>
<b>Mound City</b>	<b>6</b>	<b>6</b>	<b>0</b>		<b>12</b>

**MOUND CITY BOX SCORE**

MOUND CITY PANTHERS - 1-2, 1-2 Conference

**Touchdowns**

Jaden Gillenwater - 2 TD - 1 Receiving, 1 Passing  
 Matthew Poppa - 1 TD - 1 Receiving  
 Ben Shifflett - 1 TD - 1 Passing

**Passing**

Jaden Gillenwater - 4 for 12 - 62 Yards, 1 Interception  
 Ben Shifflett - 4-8 - 65 Yards

**Receiving**

Blake Shifflett - 3 for 26 Yards  
 Jaden Gillenwater - 1 for 47 Yards, 1 TD  
 Matthew Poppa - 1 for 30 Yards, 1 TD  
 Dylan Marrs - 2 for 21 Yards



**Mound City Panther Blake Shifflett (9)** - Grabs the ankles of a Worth County Tiger during the homecoming football game at Mound City on Friday, September 4. Shifflett was one of the leading tacklers for the Panthers in the 58-12 loss to the Tigers.



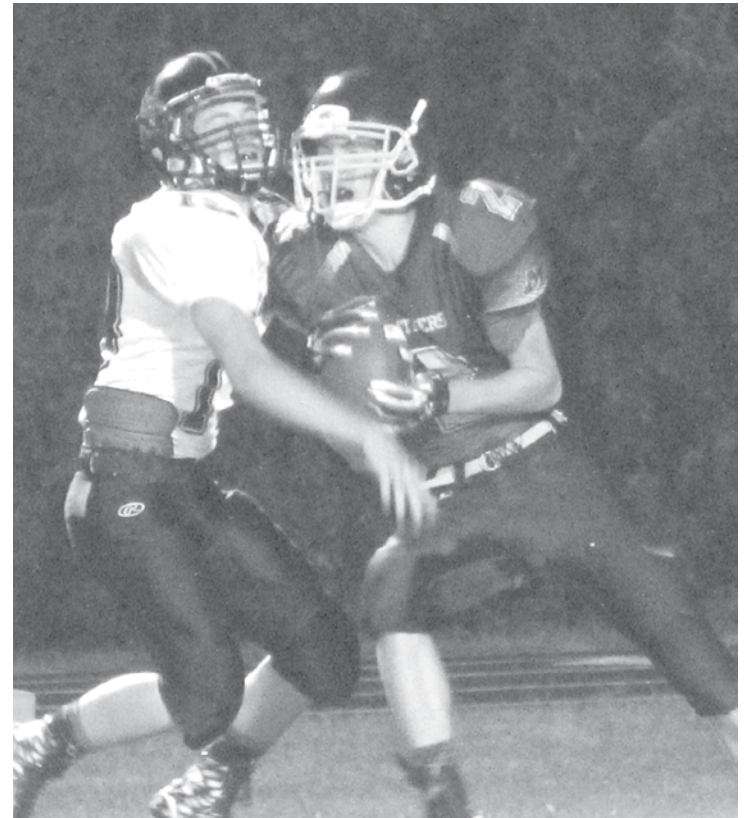
**Mound City Panther Jaden Gillenwater (7)** - Receives a pass from teammate Ben Shifflett at the homecoming game against Worth County of Grant City, MO, on Friday, September 4, in Mound City. Gillenwater scored one touchdown and threw a pass for the second touchdown the Panthers scored for the game, losing to Worth County, 58-12.



**(LEFT) Mound City Panther Dylan Marrs (16)** - Pulls down a pass during the homecoming game against Worth County on Friday, September 4, at Mound City. Marrs had two receptions for 21 yards in the 58-12 loss.



**The Mound City Panthers' Holstine brothers** - Sandwich the Worth County ball carrier during the football game at Mound City on Friday, September 4. Riley Holstine (28) and Hunter Holstine (44) get some help from Blake Shifflett (9) on the ground. Mound City lost the homecoming game, 58-12.



**Mound City Panther Matthew Poppa (2)** - Catches a Jaden Gillenwater pass for a touchdown at Mound City's homecoming game against Worth County of Grant City, MO, on Friday, September 4. Poppa was also a leading tackler for the evening. Mound City lost to Worth County, 58-12.



**Mound City Panther Ben Shifflett** - Discusses the play before he goes back in to quarterback his team. Shifflett threw for one touchdown in the 58-12 loss to Worth County of Grant City, MO, on Friday, September 4. The homecoming game was also a 275 Conference loss for the Panthers.

## Panthers' cross country receives fourth place in Maryville meet

The Mound City girls' cross country team traveled to Maryville, MO, to compete on Tuesday, September 1. As a team, Mound City finished in fourth place.

"This was the first race of the season," commented Mound City Coach Ken Eaton. "We know now what we need to work on to lower our times." Eaton added that as the season continues the temperatures should lower which will help the runners.



**The Mound City Panthers' varsity cross country team** - Takes off from the starting line at the Maryville Invitational meet on Tuesday, September 1. The team finished in fourth place in the 5,000-meter (3.1 miles) varsity event. Mound City's Kendey Eaton finished in third place with a time of 22:49, and was a top twenty medalist. Pictured are, left to right, Jocelyn Clayton, Jessica Johnson (hidden behind Clayton), Joeigh Eaton, Adrienne Messer, Henna Kivilahti and Kendey Eaton.

CROSS COUNTRY  
**MARYVILLE INVITATIONAL**  
 Tuesday, September 1, 2015 - Maryville, Mo.

**MOUND CITY RESULTS**  
 (VARSITY) 5,000 Meters (3.1 Miles) 4th Place

- Results**  
 Kendey Eaton - 22:49 - 3rd Place (medalist)  
 Henna Kivilahti - 24:50 - 21st Place  
 Deanna Clayton - 25:13 - 23rd Place  
 Joeigh Eaton - 26:30 - 29th Place  
 Adrienne Messer - 27:28 - 35th Place  
 Jessica Johnson - 30:01 - 56th Place

(JUNIOR VARSITY) 3,000 Meters (1.9 Miles)

- Results**  
 Sylvia Foust - 15:50 - 13th Place



**Mound City Panther Sylvia Foust, right** - Runs in the junior varsity cross country meet at Maryville, MO, on Tuesday, September 1. The distance for junior varsity is 3,000 meters (1.9 miles) and Foust finished in 13th place with a time 15:50.

### CRAIG COMMUNITY CALENDAR

*(ITEMS MUST BE AT THE MOUND CITY NEWS BY NOON MONDAY)*

Sept. 10 - Mound City JH/JV/V Volleyball at Rock Port - 5:30 p.m.  
 Sept. 11 - Mound City V Football vs. South Nodaway in Barnard, MO - 7 p.m.  
 Sept. 12 - Big Lake State Park Informational Meeting at Big Lake Shelter House - 4-6 p.m.  
 Sept. 14 - Mound City JH/JV Football vs. Worth County in Grant City, MO - 5 p.m.  
 Sept. 14 - Mound City V Volleyball Tri. at South Holt in Oregon, MO - 5:30 p.m.  
 Sept. 15 - Mound City Cross Country at Tarkio, MO - 5:30 p.m.  
 Sept. 16 - Craig City Council at Craig City Hall - 5:30 p.m.  
 Sept. 17 - Mound City JH/JV/V Volleyball vs. Nod.-Holt at Mound City - 5:30 p.m.  
 Sept. 18 - Mound City V Football vs. Rock Port at Mound City - 7 p.m.  
 Sept. 19 - 6th Annual Missouri's Great Northwest Winefest at Griffith Park in Mound City - 12-8 p.m.  
 Sept. 21 - Mound City V Volleyball at Nod.-Holt Tour. in Graham, MO - 8 a.m.  
 Sept. 21 - Mound City JH/JV Football vs. Stanberry at Mound City - 5 p.m.

*See Us For All Your Banking Needs*

- FREE Checking • FREE Internet Banking
- NOW Accounts • Savings Accounts • CDs
- LOANS At Competitive Rates for Homes, Cars, Etc.

## Citizens Bank & Trust

PO Box 70 PO Box 38  
 Rock Port, MO 64482 Craig, MO 64437  
 660-744-5333 660-683-5333

904 State St.  
 Member FDIC Mound City, MO 64470 660-442-3800

**2015 FORD ESCAPE**  
 ALL WHEEL DRIVE,  
 20,700 MILES,  
 ECOBOOST,  
**\$24,900**

# HULLMANS FORD

**402-245-4413**  
 WWW.HULLMANSFORD.COM  
 FALLS CITY, NE

**2014 FORD EDGE LIMITED,**  
 ALL WHEEL DRIVE,  
 32,000 MILES,  
**\$25,950**



# SHNH Spartans drop game to St. Joseph Christian Lions

The SHNH Spartans hosted the St. Joseph, MO, Christian Lions in football action on Friday, September 4, in Oregon, MO. Tied up at 14 points at the end of the first quarter, SHNH could only find the end zone one more time as St. Joseph Christian sealed the game with a 60-21 win.

"We played a good one and a half quarters. Unfortunately, football is four quarters," said Coach Josh Petersen. "Turnovers, penalties and missed tackles plagued us in the last three minutes of the second quarter and the entire second half of the game. We just have to get better at doing the little things. All said, we win on Friday, September 11, at East Atchison and we are back at 2-2."

Brody Day was the quarterback again this week and threw for one touchdown and rushed for two more, adding three PAT's. Zach Walker led the Spartans with 17 tackles.



**SHNH Spartan Carey Volner (88), left** - Leaps in the air for the reception during the football game with St. Joseph Christian on Friday, September 4, in Oregon, MO. Volner had two catches for 45 yards and one touchdown. The Spartans fell to St. Joseph Christian, 60-21.



**SHNH Spartan Tommy Thompson (66)** - Waits for the signal during the football game against St. Joseph Christian on Friday, September 4, in Oregon, MO. The Spartans were defeated by a score of 60-21.



**SHNH Spartan James Chesnut (7)** - Brings the ball out of the backfield during the first half of action at the football game against St. Joseph Christian on Friday, September 4, in Oregon, MO. The Spartans lost the non-conference game, 60-21.

## ST. JOE CHRISTIAN vs. SOUTH HOLT

Friday, September 4, 2015 - Oregon, MO

Scoring	1st	2nd	3rd	4th	Final
St. Joe Christian	14	26	20	0	60
South Holt	14	7	0	0	21

### SHNH BOX SCORE

SHNH SPARTANS - 1-2, 0-1 Conference

#### Touchdowns

Brody Day - 3 TD - 1 Passing, 2 Rushing  
Carey Volner - 1 TD - 1 Receiving

#### Passing

Brody Day - 2 of 8 - 45 Yards

#### Rushing

Brody Day - 25 for 104 Yards

#### Receiving

Carey Volner - 2 for 45 Yards

#### Total Offensive Yards

SHNH - 184 Yards - 45 Passing, 139 Rushing

#### Kicking

Brody Day - 3 PAT's (Point After Touchdown)

#### Tackles

Brody Day - 1, Zach Walker - 17, Carey Volner - 7, Dakota Leeper - 6, Austin Barton - 9



**A group of SHNH Spartans** - Brings a St. Joseph Christian Lions player down during the non-conference football game at Oregon, MO, on Friday, September 4. Getting in on the action are Zach Walker (24), Dakota Leeper (55), Cole Alloway (5) and James Chesnut (7). St. Joseph Christian won the game, 60-21.



**SHNH Spartan Blayne Collins (71)** - Works to get open for a pass at the non-conference football game against St. Joseph Christian on Friday, September 4, in Oregon, MO. The Spartans were defeated, 60-21.



**SHNH Spartan Brody Day (18)** - Slows the St. Joseph Christian ball carrier down as he and teammate, Zach Walker (24), zoom in for the tackle at the Friday, September 4, football game in Oregon, MO. St. Joseph Christian won the game, 60-21.

# Nodaway-Holt wins 275 Conference volleyball match against Rock Port

The Rock Port (MO) Blue Jays traveled to Graham, MO, on Thursday, September 3, to take on the Nodaway-Holt Trojans in 275 Conference volleyball play. The Trojans needed extra volleys to win the first game, 28-26. Nodaway-Holt also won the second game, 25-14, in the two-game match. The Trojans have a 2-4-1 record and are 1-0 in the conference.

## ROCK PORT vs. NODAWAY-HOLT

Thursday, September 3, 2015 - Graham, MO

Score	1st	2nd	3rd
Rock Port	26	14	-
Nodaway-Holt	28	25	-

### NODAWAY-HOLT (V) STATISTICS

NODAWAY-HOLT TROJANS (V) - 2-4-1, 1-0 Conference

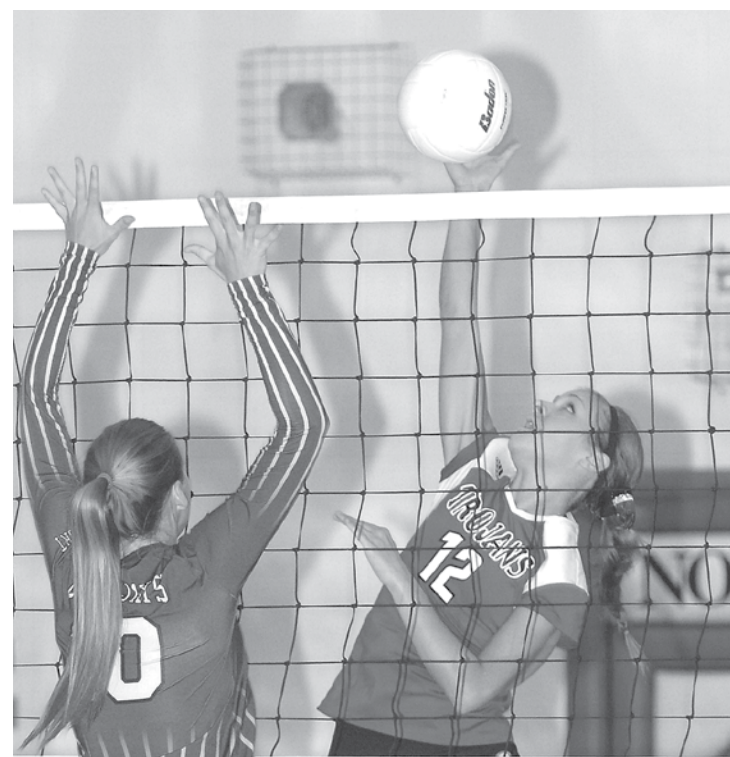
PLAYER	ACES	HITS	DIGS	ASSISTS	BLOCKS
Frankie Lemar	2	-	-	19	-
Macie Bohannon	-	-	18	-	5
Amanda Bohannon	-	-	-	-	-
Jordan Long	2	5	-	-	-



**Nodaway-Holt Lady Trojan Sydney Billings** - Hits a powerful serve during volleyball action at Graham, MO, on Thursday, September 3, against Rock Port, MO. Nodaway-Holt won the contest, 28-26 and 25-14.



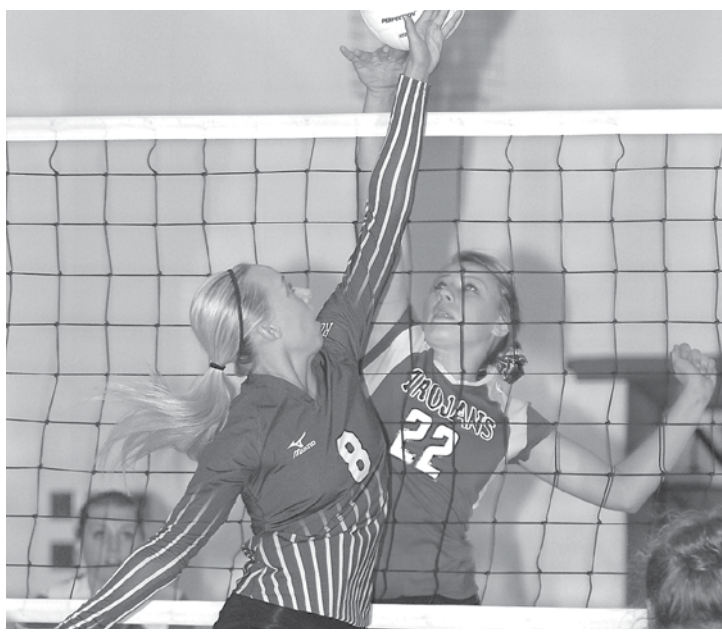
**Nodaway-Holt Lady Trojan Mikala Hankins** - Hits the volleyball over the net against Rock Port, MO, on Thursday, September 3, in Graham, MO.



**Nodaway-Holt Lady Trojan Jaylee Holmes (12)** - Pounds the volleyball over the net against Rock Port, MO, on Thursday, September 3, at Graham, MO. The Rock Port Blue Jays fell to the Lady Trojans in two games, 26-28 and 14-25.



**Nodaway-Holt Lady Trojan Maggie Fuhman** - Bumps the volleyball during varsity action with Rock Port, MO, on Thursday, September 3, at Graham, MO. Rock Port lost to Nodaway-Holt, 26-28 and 14-25.



**Nodaway-Holt Lady Trojan Macie Bohannon (22)** - Spikes the volleyball over the net against Rock Port, MO, on Thursday, September 3, at Graham, MO. The Lady Trojans won the 275 Conference match in two games, 28-26 and 25-14.



By Janet Hackert, Regional Nutrition and Health Education Specialist, University of Missouri

## Making the most of what grows

In days gone by, no food was wasted. This year with rain after rain, so many people's gardens are just not producing like expected. It may be time to reconsider what can be eaten from the garden – the usual and the less common – and make the most of what does grow.

Texas Cooperative Extension has an interesting guide called *Secondary Edible Parts of Vegetables*. It describes the most familiar parts of a variety of vegetables. It also includes other parts of the same plant that could be eaten, though it may take some creativity to maximize the stronger or milder flavors associated with those parts. For example, typical fresh greens used for salad or otherwise eaten raw include spinach, a variety of lettuces, cabbage or even turnip greens. Other greens include the leaves of snap beans, lima beans, carrots,

cauliflower, kohlrabi, okra and peas. Some greens, such as beet and broccoli leaves, have a strong flavor but can enhance and liven up a salad made from other milder greens and have the benefit of added nutrients. Sweet potato leaves, for example, bring the added value of extra protein, a nutrient not usually associated with greens; and of course, many of these greens may also work well cooked. Likewise, greens can be canned, following the recommendations for canning spinach and other greens.

With lower production, whether in the garden, at a farmers' market or vegetable stand or in a store, make the most of the vegetable by using all its edible parts. For example, most people eat the "flower" of a head of broccoli. The stems can also be used – cooked or cut into broccoli sticks for a healthy snack; and the leaves can be

eaten. Likewise, the outside of a sweet pepper is the most likely part to be used, but the seeds and membrane are also edible and can be added to a stir-fry, stew or other dish.

There are also wild greens that are edible and nutritious and free for the eating for those who have them growing on their property. Oregon State University Extension Service has a nice guide called *Edible Wild Greens: An Introduction*, with information on identification, use and nutritional value. The Missouri Department of Conservation also has some recipes for using these wild edibles.

For more information on making the most of vegetables, or any other topic, contact Janet Hackert at 660-425-6434 or HackertJ@missouri.edu or a local University of Missouri Extension office.

## National Child Passenger Safety Week

The Missouri State Highway Patrol joins the National Highway Traffic Safety Administration (NHTSA), the Ad Council and other safety advocates to commemorate National Child Passenger Safety Week (September 13-19). The primary goal of this program is to remind all parents and other adults responsible for children traveling in motor vehicles of the importance of child safety seats and seat belts. Every year, children suffer needless injuries. Preliminary statistics indicate that in 2014, 17 children under the age of eight were killed in traffic crashes and another 1,578 children were injured. Troopers issued citations to 2,143 drivers who failed to secure children less than eight years old in a child restraint/booster seat in 2014. Troopers issued citations to an additional 301 drivers who failed to secure a child 80 pounds or more or over 4'9" in a seat belt in 2014.

Troopers investigate traffic crashes every day. Nothing is more disturbing than a traffic crash that includes a child being hurt or killed. The Missouri State Highway Patrol encourages every driver to make sure child passengers in their vehicles are restrained properly.

Missouri law states:

- Children less than four years old are required to use an appropriate child passenger restraint system. [The fine for not complying with the law is \$50.]
- Children less than 40 pounds, regardless of age, must be secured in a child passenger restraint system appropriate for the child. [The fine for not

complying with the law is \$50.]

- Children ages four to eight years old who weigh at least 40 pounds, but less than 80 pounds, and are under 4'9" tall, must be secured in a child passenger restraint system or booster seat appropriate for that child. [The fine for not complying with the law is \$50.]
  - Children ages eight through 15 must wear seat belts regardless of the type of vehicle in which they are riding or where they are seated (front or back). Like the child restraint law, this is a primary law, meaning you can be pulled over by law enforcement for noncompliance. The fine is \$10.
  - Persons less than 18 years of age operating or riding in trucks (regardless of gross weight for which licensed) must wear seat belts.
  - No person under age 18 is allowed to ride in the unenclosed bed of a truck with a licensed gross weight of less than 12,000 pounds on lettered highways, federal, state maintained highways and within city limits. There are exemptions for agricultural purposes, special events and parades.
  - It is the driver's responsibility to ensure passengers under the age of 16 are buckled up safely. Those 16 and over are responsible for themselves.
- There are many styles of child safety seats from which parents may choose. Infant seats are designed for children up to 22-30 pounds depending on the seat manufacturer. This type of seat should be placed into a vehicle

so the infant faces rearward in a semi-reclined position. It is important to remember rear-facing infant seats should NOT be used in a front passenger seat equipped with an active air bag. If deployed, an air bag could hit the infant seat and injure or kill the baby. Airbag or not, the back seat is the safest place for a child.

Most convertible child safety seats are designed for children from five pounds up to 40-80 pounds, depending on the manufacturer. Like all seats, the manufacturers' labels on the side indicate the maximum height and weight of the seat. The seats recline and face rearward in an infant position and convert to sit upright and face forward for the toddler position. Most newer convertible seats can hold children who weigh up to 35 or 40 pounds in the rear-facing position. NHTSA recommends keeping children rear facing until they reach the maximum height and weight for the car seat. The child can then be turned around forward facing.

Booster seats are designed for children who have outgrown other safety seats and must be used with an adult lap and shoulder belt. Lap/shoulder belts are designed for children who are at least 4'9" tall or 80 or more pounds. Make sure the lap belt stays low and snug across the lower hip-upper thigh area and the shoulder belt does not cross the face or the neck.

For safety reasons, the Missouri State Highway Patrol discourages the purchase of child safety seats at a garage sale or other second hand outlets. Also, a safety seat that has been in a vehicle during

a traffic crash should be replaced.

There is no one "safest" child safety seat. Use the one that fits your child, fits in your vehicles correctly and one that you will use correctly every trip, every time. According to the National Highway Traffic Safety Administration, three out of four child safety seats are installed improperly. Car seat inspection stations are located all over Missouri. For more information about the proper use of child restraint systems or to schedule a child safety seat inspection, contact the nearest Missouri State Highway Patrol troop headquarters and ask for the public information and education officer or visit [www.seatcheck.org](http://www.seatcheck.org).

CLASSIFIED ADVERTISING  
CALL 660-442-5423

CLASSIFIED ADVERTISING  
CALL 660-442-5423

**Terraces or Structures Full of Dirt?**

I can push, haul or dig them out.

**Call Bill at 816-261-2477**

**Bradbury Salvage & Recycling**

**660-572-0446**  
Forest City, MO

- Any type of metal
- Batteries
- And much more!

Free drop off at **206 Commercial St.**  
**OR FREE PICK-UP**

**JEAN MANEKE**  
ATTORNEY-AT-LAW



115 West Nodaway  
Oregon, Missouri  
660-446-3453



Phone Answered 5 Days a Week  
Office Hours 9:00 a.m. to 4:30 p.m. Every Tuesday  
Principal office in Kansas City, MO

**GORDON AUTOBODY**

QUALITY COLLISION REPAIR

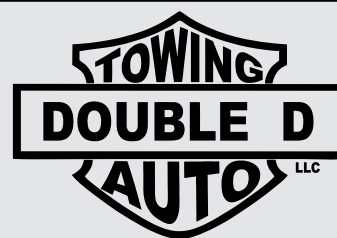
110 E. 5<sup>th</sup> St., MOUND CITY, MO 64470

PHONE: (660) 442-3400

FAX: (660) 442-5511

HOURS: MONDAY - FRIDAY 8-5

SATURDAYS BY APPOINTMENT



24 HOURS/DAY - 7 DAYS/WEEK

Mound City, MO

660-442-3210 (Shop) • 660-253-2432 (Cell)

[www.doubledtowingllc.com](http://www.doubledtowingllc.com)

Dale Heming • Dustin Heming • Scott Panning

**NAUMAN CONSTRUCTION, INC.**  
EST. 1980

GENERAL CONTRACTING  
Remodeling ~ Custom Cabinets ~ Carpentry  
Granite, Solid-Surface, Quartz Countertops

307 State Street

Mound City, MO 64470

tracy@naumanconstruction.com

Shop: 660-442-5290

Hugh: 816-383-3001

Tracy: 816-596-7159



**Timberview Roofing**  
NOW OFFERING SEAMLESS GUTTERING  
**Chris Clement**  
816-390-3002 (Cell)  
660-935-2219 (Office)  
660-652-3033 (Home)

**Do It Best**  
**MOUND CITY LUMBER**  
Do It Best Rental Center  
108 W. 7th St. • Mound City, MO  
**660-442-5416**  
Hours: Mon.-Fri. - 7:30 a.m. - 5 p.m.  
Saturday - 7:30 a.m. - 4 p.m.

**QUALITY SEPTIC**  
Registered OWTS  
Serving Northwest Missouri  
**Jason Knowles**  
jseptic@gmail.com  
**660-572-0094**

**HINELINE**  
HOME FURNISHINGS, INC.  
Serving all of your furniture, flooring, and home decor needs  
1411 S. Main, Maryville, MO  
**660-562-0003**

**Johnson Heating and Cooling**  
Casey Johnson, Owner  
**660-442-6354**  
Licensed and Insured  
Specializing with Trane and Heil models

**Joshua K. Ohlensehlen Carpenter**  
New Construction Remodeling Repair  
Large & Small Projects  
PO Box 384, Fairfax, MO 64446  
**660-254-2821**

**S & S Electrical Contractors**  
Licensed & Insured  
Now An Authorized Dealer & Installer Of Cummins Generators  
**Power Generation**  
Sean Slocum  
660-491-1115 • 660-442-3165  
slocum@centurylink.net

**BEST BRANDS PLUS**  
Major Appliance Sales & Service  
TVs and Electronics  
American Made Mattresses & Bedding  
Radio Shack Franchise  
660-582-2815  
2605 S. Main, Maryville, MO  
[www.bestbrandsplusradioshack.com](http://www.bestbrandsplusradioshack.com)

Country Estate Vinyl Fence  
Maintenance Free  
Over 40 Styles To Choose From.  
Sales & Installation  
Free Quotes  
**HALL CONSTRUCTION CO.**  
18107 Hwy. 59 • Mound City, MO 64470  
660-442-6050

**J & E Concrete**  
Commercial & Residential Concrete Work  
**Jeff Karsten**  
Cell: 816-262-5933  
**Free Estimates**

**Advertise Here!!!**  
Mound City NEWS  
ADVERTISING  
CALL 660-442-5423

**Brad Pankau's Home & Farm Repair**  
No job is too small!  
Fully Insured  
Call 660-442-3354,  
660-254-0156, or  
660-442-6343.

**Scott's Plumbing Service**  
Plumbing, Heating and Air Conditioning  
Service • Repair • Installation  
512 Mill St., Mound City  
**(660) 442-3441**

**Advertise Here!!!**  
Mound City NEWS  
ADVERTISING  
CALL 660-442-5423

**Brad Pankau's Home & Farm Repair**  
Roofing, siding, interior/exterior painting, decks, gutter installation & cleaning, electrical & plumbing, drywall & interior remodeling, tree trimming & removal, etc.  
**BARN & IMPLEMENT SHED REPAIR!**  
No job is too small! ~ Fully Insured  
Call 660-442-3354, 660-254-0156, or 660-442-6343.



# Classifieds

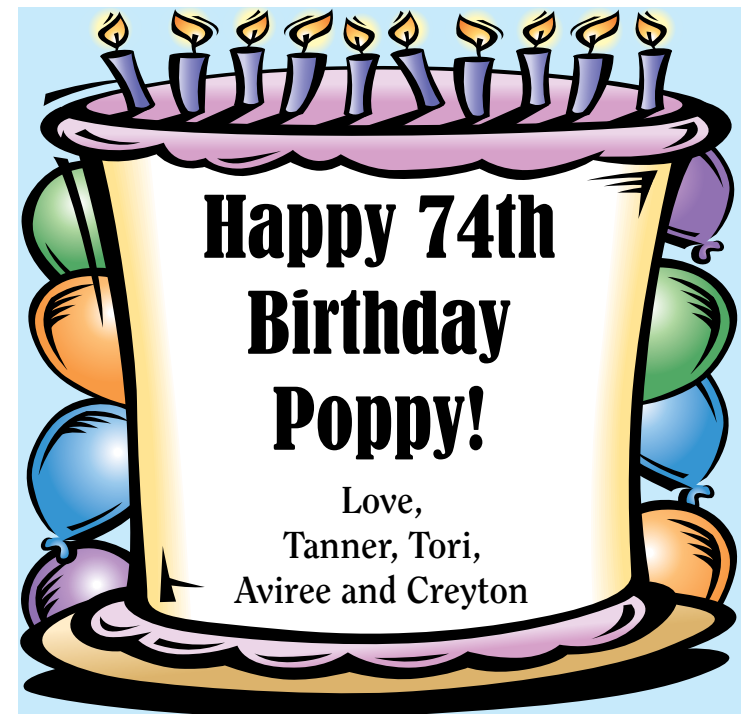
**GET THE JOB DONE!**  
 Buy • Sell • Trade • Rent  
 Hire • Thank You/Remembering • Legal Services

Call The Mound City News To Place Your Ad • 660-442-5423

**THANK YOU/REMEMBERING**

**THANK YOU-** The rummage/bake sale was a huge success! I would like to thank everyone who donated, helped set up and take down; Ruth for being a fantastic salesperson; Loretta for the great lunch; and everyone who baked and donated the delicious treats. We have been blessed with some wonderful friends and fantastic volunteers who make our mission at the Nutrition Site possible. Again, thank you so very much!

Patricia Johnson, Administrator  
10/1tc



Thank you to the Mound City community and our surrounding neighbors for another successful Market Square Day. We offer a special thank you to our local policemen, highway patrol, city street department and volunteer firemen for preparing and monitoring the vendor area and traffic accesses. We also want to thank all the merchants and local organizations that support us and assist with Market Square Day in so many ways. It would not have been the 39th year without all of you.

**Xi Eta Upsilon Chapter of Beta Sigma Phi**



**CLASSIFIED ADVERTISING**  
CALL 660-442-5423

**MISCELLANEOUS**

**HOWARD'S GUN REPAIR-** 12315 Hwy. 59, Craig, Mo., 64437. 660-683-9401.  
17/tfc

**FREE END ROLLS-** At the Holt County Publishing building north of Mound City on Hwy. 59.  
31/tfc

**CRAIG C.T.A. TAILGATE PARTY-** Friday, Sept. 18, 2015, prior to Rock Port vs. Mound City football game, Mound City Panther football field/shelter house, 5-7:30 p.m. Menu: Sloppy joe, chips, pickles, cookies (baked by Dottie Biermann), water, tea and lemonade. Free will donation. All proceeds will be applied to the C.T.A. Scholarship Fund.  
10/2tc

**GREG'S JEWELRY -** Located at 307 E. 5th St. in Mound City, Mo., offers pocket knives - Swiss Army, Case and more. Call 660-442-3739 for all your jewelry needs.  
10/1tc

**EMU OIL-** Arthritis and joint pain, burns and sunburns, aging skin, cuts and abrasions. Hand lotion. G & L Enterprises. Call 816-387-7332 or 660-442-5688.  
40/tfc

**GARAGE SALE**

**CRAIG R-3 ELEMENTARY STUDENT COUNCIL GARAGE SALE-** Saturday, Sept. 19, 2015, Craig MO, R-3 School old gym, 8 a.m.-12 p.m. All proceeds will be applied to the Playground Fund.  
10/2tc

**REAL ESTATE**

**Northridge Place Apartments  
Mound City, MO**

Now Taking Applications.

Utilities and cable included. Must be 62 or disabled to apply.  
660-442-3128, Ext. 5502

Equal Housing Opportunity



**Kathi Clement Realty**  
www.kathiclementrealty.com  
1423 State St. • Mound City, MO 64470  
660-442-6500 • Cell: 816-387-3018  
kathiclement@yahoo.com  
Kathi Clement, Broker

**ENTERPRISE REALTY LLC**

Randy James, Broker  
Jim Loucks, Sales Agent  
816-390-2749 • Office 660-582-7160  
www.entrealty.com

**LAND FOR SALE**

**FOR SALE**

**FOR SALE-** Fresh duck eggs, \$3 per dozen, and ducklings (one week-month old), all sizes. Call Dean Biermann, 660-491-5679.  
9/2tc

**FOR SALE-** 1976 C65 Chevrolet grain truck, 10-wheeler, 20' bed with tarp, 366 engine, 5x2 transmission. Sidney Smith, 660-442-5541 or 660-442-6075.  
10/1tp

**FOR RENT**

**FOR RENT-** Trailer. 214 High St., Lot 5, Mound City. More coming for rent soon. Call Angela Turner at 660-623-1014.  
50/tfc

**LOST**

**LOST DOGS**

Two big Border Collie mix pups missing since Monday, Sept. 7. Last seen 8 miles north of Mound City.

CALL  
660-442-3609

**CLASSIFIED ADVERTISING**  
CALL 660-442-5423

**CLASSIFIED ADVERTISING**  
CALL 660-442-5423

**HELP WANTED**

**ST. JOSEPH, MO, EVENING REAL ESTATE LICENSING -** Class starts Monday, Oct. 12. Free catalog. 816-455-2087. www.realestateprepschool.com.  
10/4tp

**HELP WANTED • HELP WANTED**

- **DETAILER** - Full-Time or Part-Time
- **CHRYSLER TECHNICIAN** - Full-Time

Call, E-mail or Apply in Person at Laukemper Motors (Chrysler Store), 1011 State Street in Mound City; or by contacting James Campbell at 800-490-8035 or jcampbell@laukempermotors.com

**1st Class Carports**



Call Jim Salfrank at  
816-387-7175 • 660-442-3555

**Brian Buck  
New Construction & Remodeling**

Call  
660-446-2906  
or 816-244-0783

**INNOVATIVE INSULATION**

Open Cell • Closed Cell • Spray Foam Roofing

Call for Details.  
Ryan Calhoun  
660-541-2110

**Holt County Storage**

Hwy. 59, 2.2 Miles South of Exit 75 on I-29  
\* 5'x10' Units \*  
\* 12'x15' Units - (Adjustable up to 30')  
660-572-0132

**COTTON BODY SHOP & TOW SERVICE**

Larry & Troy Cotton  
Oregon, MO  
Shop: 660-446-2008  
Home: 660-446-2561

**REAL ESTATE SPECIALISTS**

**Miller Realty**

Steph Miller-McCann, Broker  
www.miller-realty.net  
Mound City, MO  
660-442-5787



**AUCTIONS**  
660-442-5436  
"The Voice Everybody Knows"

**ENTERPRISE REALTY, LLC**

Randy James, Broker  
Jim Loucks, Sales Agent  
816-390-2749  
Office: 660-582-7160  
www.entrealty.com

**Advertise Here!!!**

Mound City NEWS  
ADVERTISING  
CALL 660-442-5423

**DWIGHT HALL REALTY**

Dwight Hall  
Broker/Owner  
Farm • Residential • Recreational • Commercial  
103 East Nodaway • Oregon, MO 64473  
Phone/Fax: 660-446-2556  
Cell: 816-261-4622  
thehalls@ofmlive.net

**BARNES REALTY**

www.barnesrealty.com  
Office: 660-442-3177  
Jamie: 660-851-1125  
Rick: 660-851-1152  
Alyssa: 660-851-1171  
Amy: 816-599-1860  
Billie Paul: 660-572-0029  
18156 Hwy. 59, Mound City, MO

**JOHN CALLOW REAL ESTATE**

Jennifer Huffman  
Phone: 660-446-3417  
Fax: 660-446-3409  
PO Box 76 • Oregon, MO 64473  
callow@ofmlive.net  
www.thecallowagency.com

**HOLT COUNTY TITLE CO.**

105 S. Washington  
Oregon, MO  
660-446-2371  
holtcountytile@ofmlive.net

**SHOWALTER AUCTION COMPANY**

**Farmland Auctions**  
Serving The Community For 62 Years  
Craig, MO • 660-683-5438  
www.showalterauctions.com  
Ronnie, Jonathan & Mary Ann

**United Country Real Estate & Auctions**

Office: 816-232-7160  
**Randy Patterson**  
LOCAL AGENT  
816-803-3951 • E-mail: realtyman@yahoo.com

**GREG BOOK REALTY**

FOR BETTER LIVING  
116 Grand Ave.  
Forest City, MO 64451  
660-541-3051  
gbook@ofmlive.net  
www.greg-book-realty.com



**CLASSIFIED ADVERTISING**  
CALL 660-442-5423



# Clear window in the storms opens up for Market Square Day



**Food vendors at Market Square Day** - Were very popular in Mound City on Monday, September 7. Enchiladas, barbecued beef, hot chicken sandwiches, smoked meats, homemade desserts and much more fed the crowd that attended the event. Beta Sigma Phi sorority, the sponsor of Market Square Day, was pleased with the day's activities.



**Amanda Griffin of Mound City, right** - Manned the face painting station again this year for Market Square Day on Monday, September 7, on Mound City's State Street. The 39th Annual Market Square Day is sponsored by the Beta Sigma Phi sorority with proceeds going to community projects and college scholarships.

**PLAN NOW**

*to have*  
**CUSTOM WATERWORKS**

**OVERSEED**  
**Your Lawn**



Also Offering Aeration, Spraying, Fertilizing  
~ 5 Application Program ~

**CUSTOM**  
**WATERWORKS**

Call Jeremy at 816-262-1896 or  
Brett at 816-752-0197



**Harvest Hill Farms of Mound City** - Had a booth at Market Square Day on Monday, September 7, in Mound City. Tom, Paula, right, and Dylan, left, Kennish, the owners of Harvest Hill Farms, sold fresh fruits and vegetables and homemade jellies.



## Frontenac grapes are ripe for the picking

**The Mound City Development Corporation grapevines** - Were loaded with Frontenac and Vignole grapes on Saturday morning, September 5. By the end of the day, the 2,650 pounds of grapes had been loaded in special macro bins and were on the way to Windy Wine Company in Osborn, MO. Pictured above are Eric and Lisa Rose and son, Logan, of Kansas City, MO. Eric Rose is a firefighter in Kansas City. The Rose family has a cabin at Big Lake, MO, and came to Mound City to help pick grapes. Also picking were several members of the Missouri Western State University Conservation Club, accompanied by Corey Kudrna of Squaw Creek National Wildlife Refuge. Joe and Susan Laukemper, Mason and Judy McIntire, Scott, Lori, Cameron and Elizabeth Laukemper, all of Mound City; and Melinda Graves of Fairfax, MO, also picked the grapes.

**WE HAUL IT ALL**  
Offering weekly service in Holt County.  
Residential rear load and roll-off containers.  
**Porter Trash Service LLC**  
Maryville, MO  
Serving Atchison, Holt, Nodaway & Andrew Counties  
Competitive Rates • 19 Years Experience  
**CALL 660-582-9117**



**Mitchell Corbin of Mound City** - Brought the Jolly Green Giant pulling tractor to Market Square Day on Monday, September 7. Corbin and his pulling partner, Chris Waegle of Barnard, MO, let kids get on the driver's seat of the Giant and sold Jolly Green Giant t-shirts.



**J.M. Jackson of Mound City** - Stands behind the display of greeting cards the American Legion were selling at Market Square Day on Monday, September 7, in Mound City. The cards, drawn by local artist, Nathan Boyd, can be purchased from any American Legion member.

**PREMIER HUNTING LODGE/RESIDENCE**  
Northwest of Mound City • 105 Acres • Irrigation System  
**ENTERPRISE REALTY & AUCTION, LLC**  
Jim Loucks, Sales Agent • Randy James, Broker  
816-390-2749 • Office 877-669-7653 • www.entrealty.com

**KLOSEK'S LLC TRASH SERVICE**  
411 N. 8th St. • Tarkio, MO 64491  
(660) 623-0188 • (660) 623-0149  
or (660) 623-9444  
**SERVING ATCHISON, NODAWAY & HOLT COUNTIES**  
• Commercial & Residential Trash Collection  
• Larger Roll-Off Dumpsters for Yard, Basement, Garage or Construction Cleanups (No Obligation Estimates).  
Sizes vary from a small pick-up to semi-truck capacity.

**FREE COVER CROPS!\***  
Call us to find out how you can have free cover crops.  
USE PROMO CODE: N340  
*\*Terms and Conditions Apply*  
**LIVENGOOD**  
*Custom Cover Crop*  
**MATT LIVENGOOD** (660) 572-0035  
**ROGER FABER** (660) 442-9962  
Missouri Southern Authorized Seed Dealer

Drying. Storage. Handling.  
**SUKUP HAS YOUR SOLUTION.™**  
Looking for innovative, efficient, and reliable products? Sukup Manufacturing Co. is the fastest growing bin manufacturing company in the world and offers a full line of product Solutions™ for your grain drying, storage, and handling, or steel building needs.  
**Tubbs Farms, LLC**  
Mound City, MO • Falls City, NE  
660-442-6323 or 660-442-6089  
www.tubbsfarmsllc.com  
Sukup Manufacturing Co. • Engineering Solutions™ since 1963  
www.sukup.com